

Your Ref: TP/IP/02937/2022  
Our Ref : CI/TPD22005243/N

20 July 2022

**Fatal Accident Investigation Team**

Traffic Police Department  
Singapore Police Force  
10 Ubi Avenue 3  
Singapore 408865

**MECHANICAL INSPECTION REPORT OF MOTORCYCLE FBM 1552A**

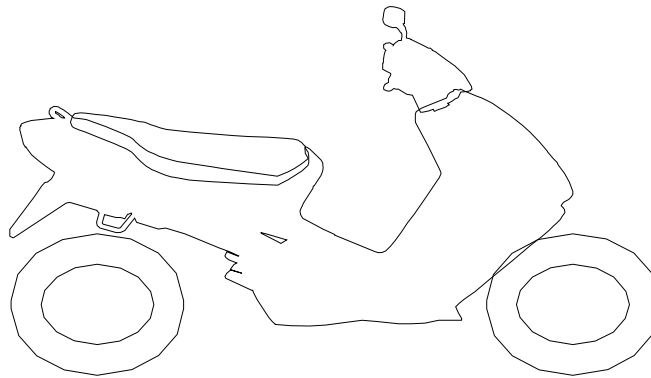
1. We refer to your request on 14 April 2022 to conduct a physical inspection of a motorcycle bearing registration number FBM 1552A (herein referred to as "**Motorcycle**"), which was involved in a fatal road traffic accident on 7 February 2022.
2. The objective of the inspection is to determine if there was any possible mechanical failure to the Motorcycle that may have contributed to the accident.
3. Following the request, we had carried out a physical inspection of the Motorcycle on 1 July 2022 at the premises of Traffic Police vehicle pound, 517 Airport Road Singapore 539942. We now set out below our observations and comments with respect to this inspection.

**General Condition**

4. The mileage of the Motorcycle at the time of our inspection was 89, 646km.
5. The Motorcycle had sustained damages all around. Body parts that were found to have been damaged include its headlight assembly, speedometer gauge, front fork assembly, front mudguard, left handlebar end, left side mirror, clutch lever, left cowling, left pillion foot peg, top box and side panniers, amongst others.

**Tyres and Wheel Rims**

6. The condition of the 2 tyres of the Motorcycle was observed to be in serviceable condition. We did not observe any tear, burst mark(s) and/or punctured hole(s) on the sidewalls as well as across the tread of the 2 tyres. Both the tyres were observed to be sufficiently inflated for vehicular operation.
7. The tyre brand, tyre size and remaining tread depth of the 2 tyres were recorded as follows:-



Metzeler 3.00 - 18 (2mm)

Pirelli 2.75 - 18 (2mm)

8. The 2 tyres were wrapped around alloy wheel rims. At the time of our inspection, we did not observe any visible damage on the front and rear wheel rim of the Motorcycle. See photos 1 – 16 below.



**Photo 1** shows the speedometer gauge of the Motorcycle. The mileage of the Motorcycle at the time of our inspection was 89, 646km (circled).



**Photo 2** shows a general view of the rear portion of the Motorcycle at the time of our inspection. The Motorcycle had sustained damages all around.





**Photo 3** shows a general view of the frontal portion of the Motorcycle at the time of our inspection. The Motorcycle had sustained damages all around.



**Photo 4** shows a general view of the right body of the Motorcycle at the time of our inspection. The Motorcycle had sustained damages all around.



**Photo 5** shows a general view of the left body of the Motorcycle at the time of our inspection. The Motorcycle had sustained damages all around. Body parts that were found to have been damaged include its headlight assembly, speedometer gauge, front fork assembly, front mudguard, left handlebar end, left side mirror, clutch lever, left cowling, left pillion foot peg, top box and side panniers, amongst others.



**Photo 6** shows a closer view of the headlight assembly which was amongst the body parts at the front body of the Motorcycle that had sustained damage as a result of the accident.





**Photo 7** shows a closer view of the speedometer gauge which was amongst the body parts at the front body of the Motorcycle that had sustained damage as a result of the accident.



**Photo 8** shows a closer view of the front mudguard which was amongst the body parts at the front body of the Motorcycle that had sustained damage as a result of the accident (arrowed).



**Photo 9** shows a closer view of the left side mirror, clutch lever and left handlebar end of the Motorcycle (arrowed). These parts were amongst the body parts of the Motorcycle which were damaged as a result of the accident.



**Photo 10** shows a closer view of the grazed left cowling of the Motorcycle as a result of the accident (arrowed).





**Photo 11** shows a closer view of the left pillion foot peg which was amongst the body parts of the Motorcycle that had sustained damage as a result of the accident (arrowed).



**Photo 12** shows the left side pannier of the Motorcycle which had sustained damage as a result of the accident (arrowed).





**Photo 13** shows the right side pannier of the Motorcycle which had sustained damage as a result of the accident (arrowed).



**Photo 14** shows the top box of the Motorcycle which had sustained damage as a result of the accident (arrowed).



**Photo 15** shows the condition of the Motorcycle's front tyre. The front tyre was observed to be in serviceable condition with remaining tread depth of approximately 2mm. There was no tear, burst mark(s) and/or punctured hole(s) on the sidewalls as well as across the tread of the front tyre.



**Photo 16** shows the condition of the Motorcycle's rear tyre. The pattern of the tread was clearly visible with remaining tread depth of approximately 2mm. We did not observe any tear, burst mark(s) and/or punctured hole(s) on the sidewalls as well as across the tread of the rear tyre.



**Engine & Drive Train**

9. Upon examination of the Motorcycle's engine area, we had observed that the various engine related parts and components were intact with no visible damage. There was also no sign(s) or indication(s) of fluid leak observed around the engine area of the Motorcycle.
10. The gear train which rotates the rear wheel of the Motorcycle was found to be intact without any misalignment. It was also adequately lubricated for operating purposes. See photos 17 – 20 below.



**Photo 17** shows the left side of the engine of the Motorcycle at the time of our inspection. The various engine related parts and components were found to be intact with no visible damage. There was also no sign(s) or indication(s) of fluid leak observed around the left engine area of the Motorcycle.

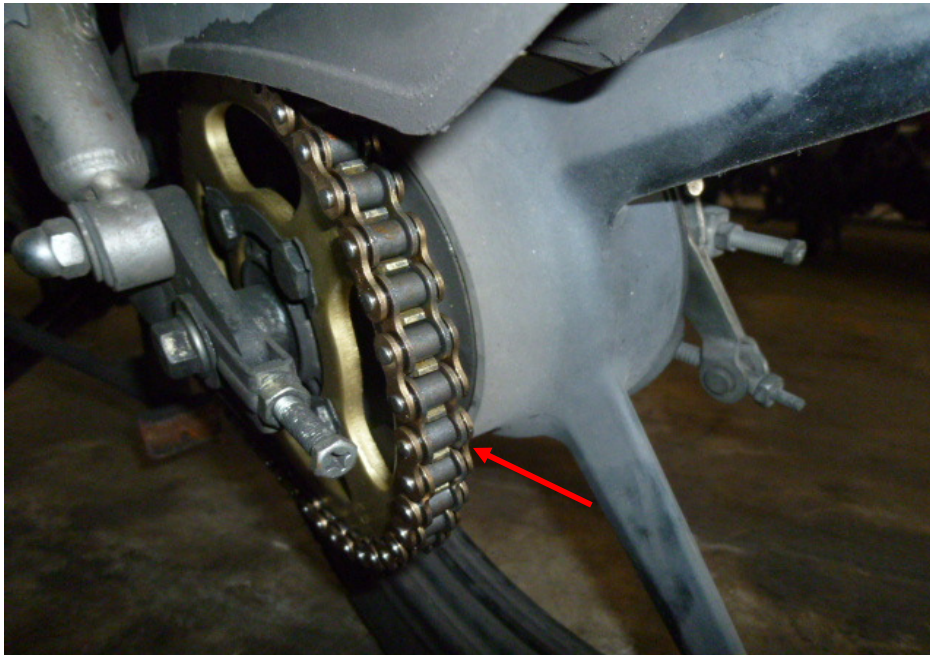


**Photo 18** shows the right side of the engine of the Motorcycle at the time of our inspection. The various engine related parts and components were found to be intact with no visible damage. There was also no sign(s) or indication(s) of fluid leak observed around the right engine area of the Motorcycle.



**Photo 19** shows the gear train (arrowed) of the Motorcycle, which was observed to be intact with no misalignment. It was also adequately lubricated for operating purposes. The gear train rotates the rear wheel of the Motorcycle.





**Photo 20** shows the closer view of the gear train (arrowed) of the Motorcycle, which was observed to be intact with no misalignment. It was also adequately lubricated for operating purposes.

### **Steering System & Braking System**

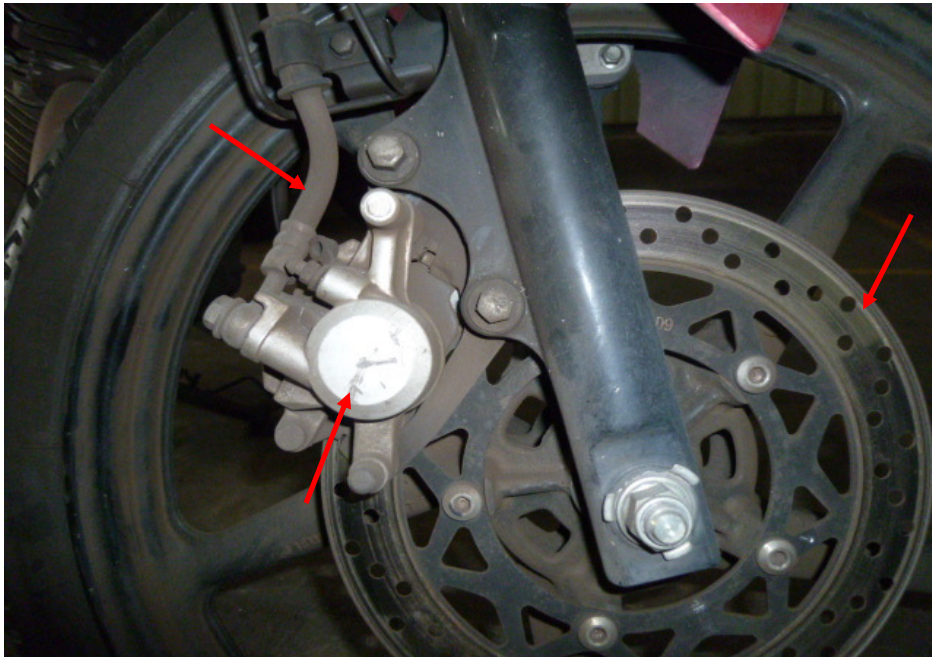
11. For this case, we were not able to conduct any test(s) on the steering system of the Motorcycle due to the damage of its fork assembly. The front forks were found to be bent inwards as a result of the accident.
12. The brake system of the Motorcycle was of a semi-hydraulic type, where hydraulic (brake fluid) pressure controls the brake for the front wheel while the brake for the rear wheel is controlled by mechanical means (cables and springs). Our visual examination of the various components in the brake system, like the brake disc, brake caliper, drum, brake lever and brake foot pedal, revealed all to be intact and without damage. There was also no leakage of brake fluid observed along the front brake hose. This was from the respective front brake fluid reservoir to the front brake caliper of the Motorcycle. The brake fluid for the front brake was found to be of sufficient level for operating purposes. However the brake fluid was found to be slightly contaminated. There was also no visible tear or cut observed on the connecting hoses and cables.

13. Static brake tests conducted on the Motorcycle had appeared to indicate that the front brake system of the Motorcycle was in serviceable condition. There was some resistance felt (spongy like feel) upon pressing the front brake lever. This would indicate that there's no leakage of pressure/vacuum in the front brake system.
14. For this case, we were not able to carry out any operational tests to the steering system and braking system of the Motorcycle due to the damage of its front forks, which had rendered the Motorcycle immobile for the operational tests. We were not able to push the Motorcycle manually forward and backward, simulating movement of the Motorcycle, for the operational tests. See photos 21 – 25 below.

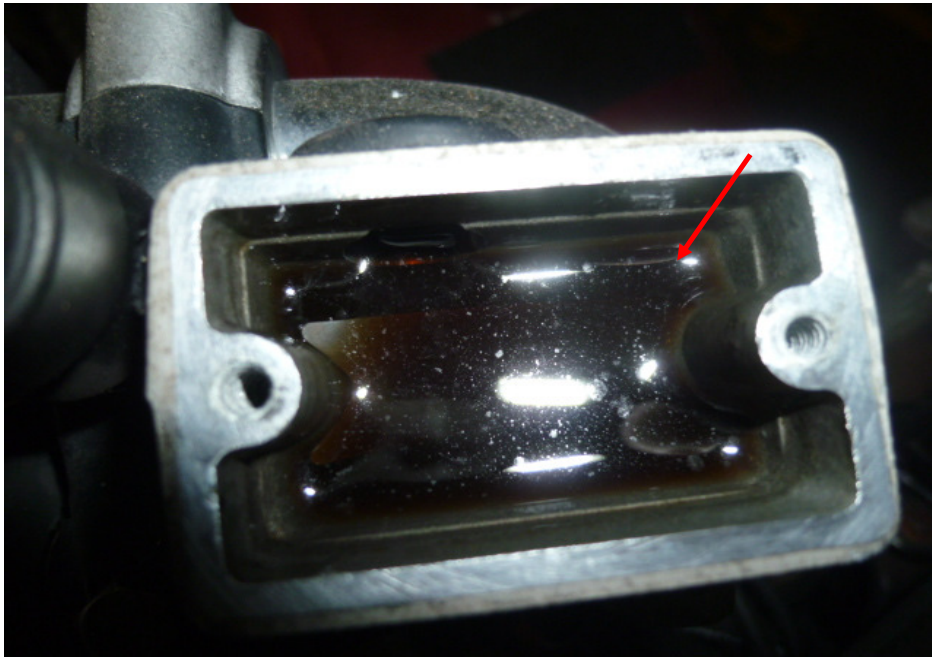


**Photo 21** shows the front forks of the Motorcycle. The front forks were observed to be bent inwards as a result of the accident (arrowed). We were hence not able to conduct any tests on the steering system of the Motorcycle.





**Photo 22** shows a close up view of the front brake caliper, front brake disc and front brake hose (arrowed) of the Motorcycle, which are all part of the components in the hydraulic front brake system of the Motorcycle. Our visual checks of these various components had revealed all to be intact with no visible damage. No leakage of brake fluid was also observed.



**Photo 23** shows the brake fluid reservoir for the front brake of the Motorcycle. The brake fluid was found to be of sufficient level for operating purposes. However the brake fluid was found to be slightly contaminated (arrowed).



**Photo 24** shows the front brake lever being depressed. There was some resistance felt (spongy like feel) upon pressing the front brake lever (arrowed). This would indicate that there is no leakage of pressure/vacuum in the brake system.



**Photo 25** shows the rear wheel of the Motorcycle. The type of brake system for the rear wheel was of a mechanical type, controlled by the brake foot pedal of the Motorcycle. Our checks of the cable (arrowed), spring and drum which are all part of the components in the rear brake system of the Motorcycle reveal all to be intact and without damage.



**Conclusion**

15. For this particular case, we were unable to determine whether there was any possible mechanical failure to the Motorcycle that may have contributed to the accident. This was mainly due to the extent of damage that it had sustained. Its steering system was damaged as a result of the accident. The braking system of the Motorcycle was observed to be in serviceable condition.
16. The 2 tyres of the Motorcycle were found to be in serviceable condition. There was no tear, cut or burst mark(s) on the outer and the inner sidewalls as well as across the tread of the 2 tyres. The 2 tyres were sufficiently inflated for vehicular operation with remaining tread depth of approximately 2mm each.

**Muhd Nazril***Senior Technical Investigator***Ang Bryan Tani***AMSOE, AMIRTE, AFF SAE, M.MATAI, AFF.Inst.AEA**Senior Technical Investigator**Technical Investigation & Reconstructionist (SAE-A)*

**DISCLAIMER OF LIABILITY TO THIRD PARTIES:-** This Report is made solely for the use and benefit of the Client named on the front page of this Report. No liability or responsibility whatsoever, in contract or tort, is accepted to any third party who may rely on the Report wholly or in part. Any third party acting or relying on this Report, in whole or in part, does so at his or her own risk.