

Our reference: 21-8375

Date: 18/12/2021

c/o Garage 13 Pte Ltd
8 Kaki Bukit Ave 4
#03-46 Premier@KB
Singapore 415875

Dear Sirs

**RE: Road Traffic Accident on 30/11/2021
PerfectGoh Limo**

In accordance with your instructions received in this office on **2/12/2021**, we made arrangements to examine the vehicle on **2/12/2021** at above-mentioned address. The following data was recorded:

Vehicle details

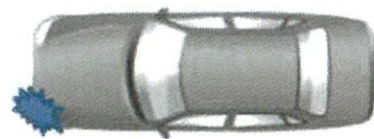
Make	Toyota	Registration	PC9644C
Model	Hiace	Chassis	GDH2232001418
Colour	White	Gearbox	Auto
Odometer	3896km	Paintwork	Good
Steering	In order	Brakes	In order
Condition	Good		

Tyre Depths

Front left	195/80R15	90% Bridgestone
Front right	195/80R15	90% Bridgestone
Rear left	195/80R15	90% Bridgestone
Rear right	195/80R15	90% Bridgestone

Status	REPAIRABLE
Magnitude	Medium
Legal status	Unroadworthy

Impact Direction & Area of Damage:



Following our examination of the accident damage, we have calculated repair times and method, which are detailed on page 2 & 3. We would recommend a sum of **\$4,678.28** and **5** working days for repair, which is sufficiently lower than the pre accident value to render the vehicle an economically and physically reliable proposition.

Subsidiaries of Impact Analysis Consultant:

• Impact Analysis Consulting Pte Ltd • Impact Analysis Academy Pte Ltd • IA Racking Solutions Pte Ltd
• IA Accounting & Consultancy Pte Ltd • Infoknights International Services (Philippines) • IABN Pte Ltd
www.iaconsultingsg.com

Our reference 21-8375
Date 18/12/2021
Page 2

Section A: Damaged Parts Assessment

Part's Description	Qty	Condition As inspected	Repairer's Estimate	Our Adjustment
List Items :				
Front bumper	1	damaged	721.50	721.50
Front bumper fog lamp garnish lh	1	damaged	98.50	98.50
Front bumper lower grille	1	broken	235.00	235.00
Front bumper tow hook cover	1	missing	38.90	38.90
Front bumper reinforcement	1	bent	412.00	412.00
Front bumper side retainer lh	1	necessary	42.00	42.00
Headlamp lh	1	broken	1224.00	1224.00
Headlamp bracket lh	1	broken	55.00	55.00
Front door lh	1	repair.respray	1658.00	0.00
Front door step ganish lh	1	broken	239.80	239.80
Front radiator grille assy	1	missing	711.00	711.00
Sub- Total cost			5435.70	3777.70
Percentage discount : 25%			1358.93	944.43
Sub-Total costs for parts			4076.78	2833.28
Special Nett Items:				
Front bumper clips	set	necessary	45.00	45.00
Sub-Total costs for parts			45.00	45.00
Parts Repair				
*	*	*	0.00	0.00
Sub- Total costs			0.00	0.00
Total costs for parts			4121.78	2878.28

Our reference 21-8375

Date 18/12/2021

Page 3

Section B: Labour Cost Calculation

	Hourly rate	Manhr. Req.	Total
To dismantle, replace, cut, weld, knock out dents to straighten accident parts as-mentioned on the 'Parts Repair' column inclusive of replacement parts.	\$ 45.00	19	\$ 855.00
Putty & Spray painting to adjacent panels. Job allowance. Paint / material.	Sub-contract work.		\$ 850.00
Apply rust proofing on the adjacent panels.	Sub-contract work.		\$ 50.00
Wiring / bulb checking (inclusive of re-focus / re-adjust on angle of light intensity.)	\$ 45.00	1	\$ 45.00
Total labour cost			\$ 1,800.00

Manhour rate and the number of manhours required for each repairing task are formulated based on individual workshop's operating cost and in-house@ IA Research Guidelines respectively.

Subsidiaries of Impact Analysis Consultant:

• Impact Analysis Consulting Pte Ltd • Impact Analysis Academy Pte Ltd • IA Racking Solutions Pte Ltd
• IA Accounting & Consultancy Pte Ltd • Infoknights International Services (Philippines) • IABN Pte Ltd
www.iaconsultingsg.com

Our reference 21-8375

Date 18/12/2021

Section C: Summary Table of Total Repair Cost

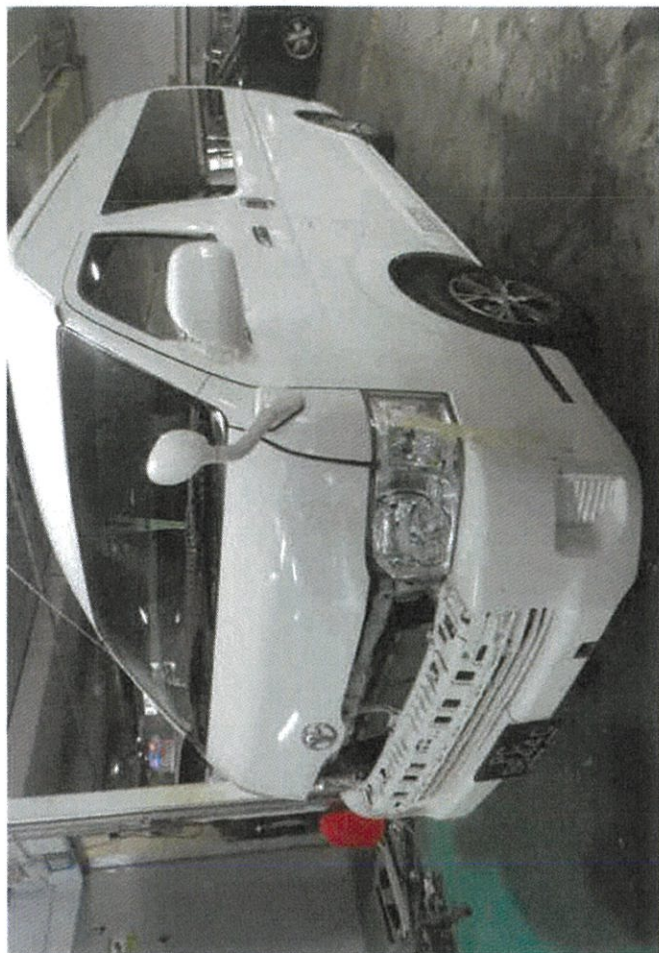
Description		Cost
Damaged Parts Assessment (See section A)		\$2,878.28
Labour Cost Calculation (See section B)		\$1,800.00
Total cost		\$4,678.28
Part-By_Part		\$0.00
Further discount	0%	
Total Repair Cost		\$4,678.28

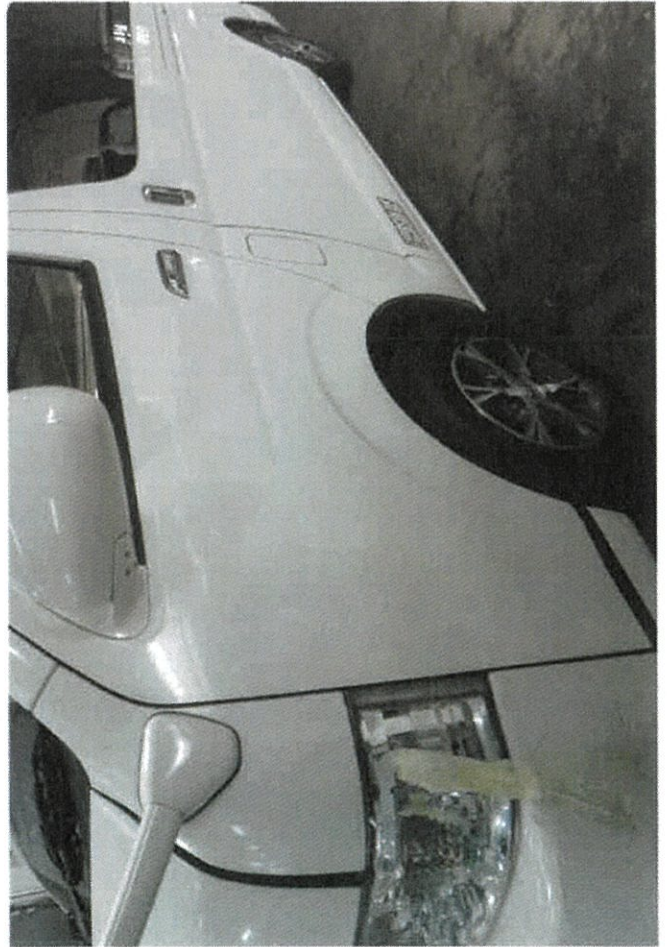
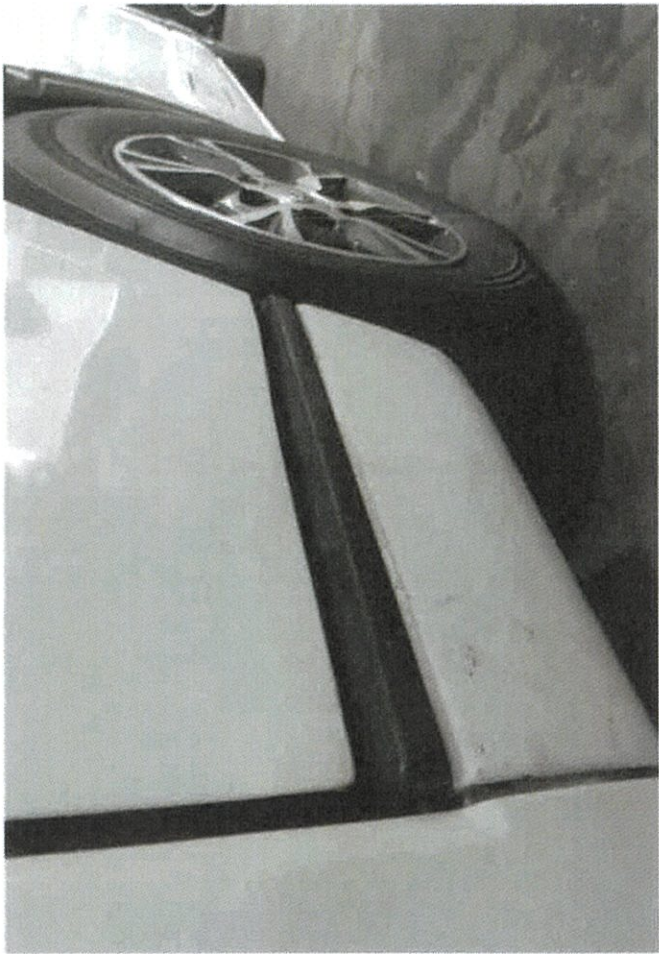
We would recommend a sum of **\$4,678.28** and **5** working days for repair.
No further items will be approved without our expressed written agreement. Any significant additional items will be subject to a supplementary report.

Mechanical Engineer, Accident Expert Witness, Licensed Appraiser (Automobile)
B.Eng. (Hons, NUS)
Diploma.Mechanical Engineering
NTC-2 Automovite Technology
Sr.MIES, Institution of Engineers, Singapore (#20100091)
MATAI, Maryland Association of Traffic Accident Investigators
IAARS, International Association of Accident Reconstruction Specialists
PMC of Singapore Business Advisors & Consultants Council
ACTA certified Trainer, Singapore
Enterprise Singapore - Recognised Certification for Management Consultants
IMI Professional Certificate In Vehicle Accident Damage Assessment (UK)

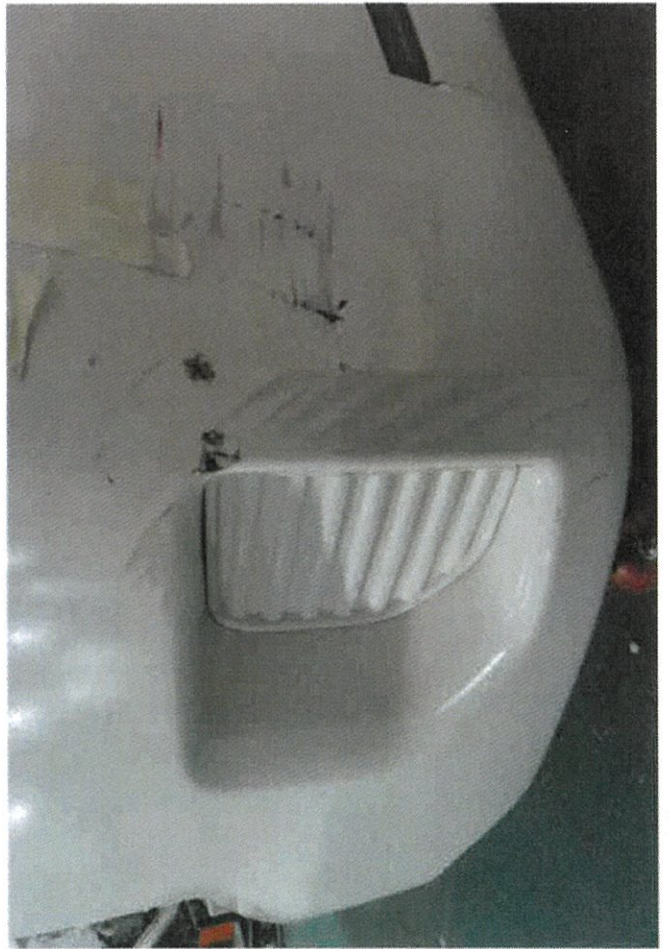
Subsidiaries of Impact Analysis Consultant:

• Impact Analysis Consulting Pte Ltd • Impact Analysis Academy Pte Ltd • IA Racking Solutions Pte Ltd
• IA Accounting & Consultancy Pte Ltd • Infoknights International Services (Philippines) • IABN Pte Ltd
www.iaconsulting.sg.com

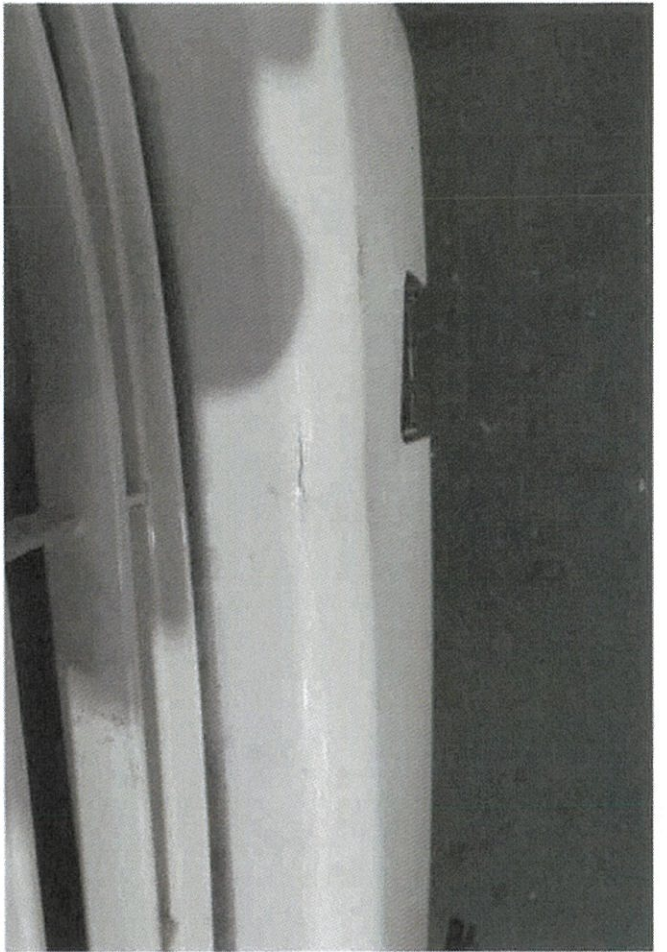








(



(

