

Our reference: 21-8316

Date: 28/11/2021

c/o Freesion Autodrive
25 Kaki Bukit Road 4
Synergy @ KB #03-33
Singapore 417800

Dear Sirs

RE: Road Traffic Accident on 15/11/2021
Koh Boon Hock LLP

In accordance with your instructions received in this office on 15/11/2021, we made arrangements to examine the vehicle on 15/11/2021 at above-mentioned address. The following data was recorded:

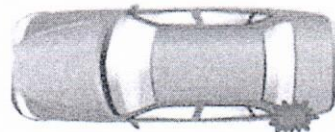
Vehicle details

Make	Honda	Registration	SKH5535T
Model	Civic	Chassis	JHMF26408S201378
Colour	Gold	Gearbox	Auto
Odometer	341437km	Paintwork	Good
Steering	In order	Brakes	In order
Condition	Good		

Tyre Depths

Front left	225/45R17	85% Toyo
Front right	225/45R17	85% Toyo
Rear left	225/45R17	85% Toyo
Rear right	225/45R17	85% Toyo

Impact Direction & Area of Damage:



Status	REPAIRABLE
Magnitude	Medium
Legal status	Unroadworthy

Following our examination of the accident damage, we have calculated repair times and method, which are detailed on page 2 & 3. We would recommend a sum of \$6,000.00 and 7 working days for repair, which is sufficiently lower than the pre accident value to render the vehicle an economically and physically reliable proposition.

8 days
Submit L/S 8/3/03

Subsidiaries of Impact Analysis Consultant:

- Impact Analysis Consulting Pte Ltd • Impact Analysis Academy Pte Ltd • IA Racking Solutions Pte Ltd
 - IA Accounting & Consultancy Pte Ltd • Infoknights International Services (Philippines) • IABN Pte Ltd
- www.iaconsulting.sg

Our reference 21-8316
Date 28/11/2021
Page 2

Section A: Damaged Parts Assessment

Part's Description	Qty	Condition As inspected	Repairer's Estimate	Our Adjustment
List Items:				
Rear bumper	1	torn.deformed <i>Torn</i>	645.50	645.50 ✓
Rear bumper side retainer lh	1	broken.nec <i>one</i>	22.80	22.80 ✓
Rear fender lh	1	bent.deep-cut <i>R</i>	895.40	895.40 X
Rear windscreen glass moulding	1	necessary <i>nn</i>	112.80	112.80 X
Rear door lh	1	bent.warped <i>R</i>	865.40	865.40 X
Rear door inner lock lh <i>(No Daged)</i>	1	damaged <i>nn</i>	205.40	205.40 X
Rear door outer protector lh	1	damaged <i>warped</i>	124.80	124.80 ✓
Rear door outer handle cover lh	1	scratched <i>nn</i>	96.80	96.80 X
Rear door weatherstrip	1	ripped.nec <i>nn</i>	175.80	175.80 X
Rocker panel lh	1	repair. <i>R</i>	552.00	0.00 X
Tail lamp lh	1	refix <i>SLC</i>	225.90	0.00 X
Rear wheel bearing lh	1	necessary <i>Daged</i>	166.00	166.00 ✓
Rear wheel bearing hub lh	1	necessary <i>Daged</i>	198.70	198.70 ✓
Rear shock absorber lh	1	rebuilt <i>SLC</i>	301.00	0.00 X
Sub- Total costs			4588.30	3509.40
Percentage discount : 20%			917.66	701.88
Sub-Total costs for parts			3670.64	2807.52

Special Nett Items:

Rocker panel side skirt lh	1	bent.deep-cut <i>DL</i>	628.80	628.80 ✓
Rear tyre rim lh	1	cut <i>cut</i>	559.80	559.80 ✓
Rear windscreen sealant	1	necessary <i>nn</i>	50.00	50.00 X
Rear bumper clips	set	necessary <i>nn</i>	45.00	20.00 ✓
Rear fender sealant	1	necessary <i>nn</i>	40.00	40.00 X
Reverse sensor	1	serviceable.refix <i>nn</i>	250.00	0.00 X
Sub-Total costs for parts			1573.60	1298.60

Parts Repair

*	*	*	0.00	0.00
Sub- Total costs			0.00	0.00
Total costs for parts			5244.24	4106.12

Subsidiaries of Impact Analysis Consultant:

• Impact Analysis Consulting Pte Ltd • Impact Analysis Academy Pte Ltd • IA Racking Solutions Pte Ltd
• IA Accounting & Consultancy Pte Ltd • Infoknights International Services (Philippines) • IABN Pte Ltd
www.iaconsultingsg.com

Our reference 21-8316

Date 28/11/2021

Page 3

Section B: Labour Cost Calculation

	Hourly rate	Manhr. Req.	Total
To dismantle, replace, cut, weld, knock out dents to straighten accident parts as-mentioned on the 'Parts Repair' column inclusive of replacement parts.	\$ 45.00	23	\$ 1,035.00
Putty & Spray painting to adjacent panels. Job allowance. Paint / material. (5 panels)	Sub-contract work.		\$ 1,100.00
Apply rust proofing on the adjacent panels.	Sub-contract work.		\$ 80.00
Wiring and bulb checking	\$ 45.00	0.8	\$ 36.00
Remove and refix rear windscreen glass. (2-man job)	\$ 45.00	3.5	\$ 157.50
Conduct water leak test for rear portion associated repair works	\$ 45.00	1	\$ 45.00
Remove and replace rear undercarriage work lh	\$ 45.00	4	\$ 180.00
Transfer of existing rear door mechanism to new door lh	\$ 45.00	2	\$ 90.00
Remove and refix rear bumper reverse sensor & conduct distance safety setting.	\$ 45.00	1.7	\$ 76.50
Total labour cost			\$ 2,800.00

Manhour rate and the number of manhours required for each repairing task are formulated based on individual workshop's operating cost and in-house@ IA Research Guidelines respectively.

P-1157.8
202
P-926.24
S.N 1208-6
L-1720
3854.84
3083.

Subsidiaries of Impact Analysis Consultant:

• Impact Analysis Consulting Pte Ltd • Impact Analysis Academy Pte Ltd • IA Racking Solutions Pte Ltd
• IA Accounting & Consultancy Pte Ltd • Infoknights International Services (Philippines) • IABN Pte Ltd
www.iaconsultingsg.com

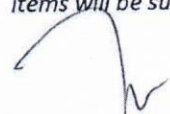
Our reference 21-8316

Date 28/11/2021

Section C: Summary Table of Total Repair Cost

Description		Cost	
Damaged Parts Assessment (See section A)		\$4,106.12	
Further discount	20%	\$821.22	
Recommended cost of parts replacement		\$3,284.90	(1)
Labour Cost Calculation (See section B)		\$2,800.00	(2)
Total Repair Cost (Round off to hundred)		\$6,000.00	(1) + (2)

We would recommend a sum of \$6,000.00 and 7 working days for repair.
No further items will be approved without our expressed written agreement. Any significant additional items will be subject to a supplementary report.


Mechanical Engineer, Accident Expert Witness, Licensed Appraiser (Automobile)
B.Eng. (Hons, NUS)
Diploma Mechanical Engineering
NTC-2 Automovite Technology
Sr.MIES, Institution of Engineers, Singapore (#20100091)
MATAI, Maryland Association of Traffic Accident Investigators
IAARS, International Association of Accident Reconstruction Specialists
PMC of Singapore Business Advisors & Consultants Council
ACTA certified Trainer, Singapore
SPRING- Recognised Certification for Management Consultants

Subsidiaries of Impact Analysis Consultant:

• Impact Analysis Consulting Pte Ltd • Impact Analysis Academy Pte Ltd • IA Racking Solutions Pte Ltd
• IA Accounting & Consultancy Pte Ltd • Infoknights International Services (Philippines) • IABN Pte Ltd
www.iaconsultingsg.com