

Mitsubishi Lancer EX 1.5A Elegance (COE till 02/2025)

Overview

[Financial](#)[Accessories](#)[Similar](#)[Research](#)[Photos](#)[Map](#)**PREMIUM AD**

Price	\$27,800		
Depreciation [?]	\$8,860 /yr	Reg Date	08-Feb-2010 (3yrs 1mth 18days COE left)
Mileage	134,420 km (11.3k /yr)	Manufactured [?]	2009
Road Tax [?]	\$821 /yr	Transmission	Auto
Dereg Value [?]	\$10,364 as of today (change)	OMV [?]	\$18,060
COE [?]	\$16,519	ARF [?]	\$18,060
Engine Cap	1,499 cc	Power	80.0 kW (107 bhp)
Curb Weight [?]	1,313 kg	No. of Owners [?]	More than 6
Type of Vehicle	Mid-Sized Sedan		

Features

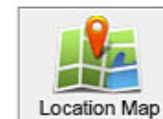
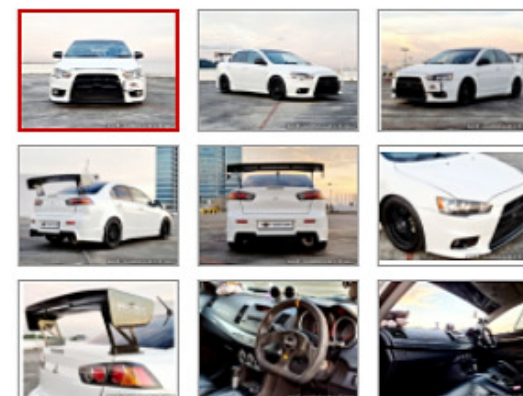
Responsive And Fuel Efficient 1.5L MIVEC 4 Cylinders DOHC Engine, Dual SRS Airbags, Auto Headlight. View specs of the [Mitsubishi Lancer](#)

Accessories

17" Rpf1 Rims, New Tyres, Fuji Exhaust With Cert. Carbon Fiber Voltex Type 5 Spoiler, Leather Seats, Body Kits, Retractable Side Mirrors, Fog Lights

Description

Low Mileage, Well Maintained By A Car Enthusiastic, Good For A Short Term Drive With No Headache, Used But Not Abused, Serviced And Maintained Regularly, Accident Free, STA Inspection Can Be Arranged. Bank And Flexible High/In-House Loan Available. Trade-In Welcomed. View To Believe. Viewing By Appointment Only.



Shortlist Compare Report Error
 More

Seller Information

Munich Alpina Pte Ltd

97 vehicles for sale. 122 sold in past 3 mths

1 Bukit Batok Crescent #06-57
WCEGA Plaza

Compare