

India International Insurance Pte Ltd  
64 Cecil Street  
#04/06-00 IOB Building  
Singapore 049711

## VEHICLE DAMAGE RE-APPRAISAL REPORT

### CLAIM REFERENCE

Our Ref. Number	: 24366	Claim Number	: MFL2019D0001449
Accident Date	: 15-11-2019	Insured Vehicle No	: YP617R
Report Date	: 12-02-2020		

### VEHICLE PARTICULARS

Vehicle No.	: SGV4868M	Chassis No.	: WBANU120X0CW23148
Registration Date	: 16-07-2019	Engine No.	: 78184000N52B25AE
Make	: BMW	Engine Cap.	: 2497 cc
Model	: 523I XL	Transmission	: Automatic
Colour	: Silver		

### REPAIR COST SUMMARY

Original repair cost	: S\$10,400.00
Revised repair cost	: S\$6,200.00
Original recommended repair period	: 8 days
Revised recommended repair period	: 6 days

### SUPPORTING DOCUMENTS

We recommend repair cost of re-appraisal based on documents provided to us.

The documents are :

- 1) LOD from R.S. Solomon LLC
- 2) Third Party Survey Report from CL Appraiser Pte Ltd
- 3) Pre-Repair Inspection conducted on 20-11-2019
- 4) Resurvey After Dismantle on 21-11-2019
- 5) Resurvey After Repairs on 25-11-2019

# INFINITI APPRAISAL SERVICE

## RECOMMENDED SPARE PARTS

SGV4868M-15112019

#	Qty	Parts Description	Repairer's Estimate (S\$)	CL Appraiser Pte Ltd (S\$)	Our Adjustment (S\$)
<b>LIST ITEM</b>					
1	1	Front O/s Door	1605.00	1605.00	0.00
2	1	Front O/s Door Outer Handle	133.00	133.00	133.00
3	1	Front O/s Door Rubber	197.00	197.00	197.00
4	1	Front O/s Door Side Mirror	1212.00	0.00	0.00
5	1	O/s Rocker Panmel Side Skirt	850.00	0.00	0.00
6	1	Rear O/s Door	1655.00	1655.00	1655.00
7	1	Rear O/s Door Inner Lock	295.00	295.00	0.00
8	1	Rear O/s Door Outer Handle	239.00	239.00	239.00
9	1	Rear Door Regulator	345.00	345.00	345.00
10	1	Rear Door Regulator Motor	305.00	305.00	305.00
11	1	Rear O/s Door Rubber	197.00	197.00	197.00
12	1	Rear Windscreen Moulding	263.10	263.10	263.10
13	1	Rear Bumper	1495.00	1495.00	0.00
14	1	Rear Bumper Side Retainer	139.95	139.95	139.95
15	1	Rear O/s Fender	1550.00	1550.00	1550.00
16	1	Rear O/s Alloy Wheel Rim	1274.70	1274.70	980.00
<b>Subtotal</b>			11755.75	9693.75	6004.05
<b>Less 5 %</b>			587.79	484.69	300.20
<b>TOTAL</b>			11167.96	9209.06	5703.85
<b>SPECIAL NETT ITEM</b>					
1	1	Rear Windscreen Sealant	80.00	50.00	40.00
2	1	Rear Bumper Clip	60.00	60.00	30.00
3	1	Rear Tyre (depreciation)	400.00	200.00	0.00
<b>TOTAL</b>			540.00	310.00	70.00

## RECOMMENDED LABOUR

#	Job Description	Repairer's Estimate (S\$)	CL Appraiser Pte Ltd (S\$)	Our Adjustment (S\$)
1	To remove, refit, replace damaged lamps and check rear electrical wiring.	80.00	50.00	20.00
2	To remove and refit inner garnishes, inner trim to assist repair.	150.00	120.00	80.00
3	To remove and refit fuel tank assembly with all attachments, pipe and hoses.	150.00	120.00	40.00
4	To conduct wheel alignment.	150.00	150.00	60.00
5	To remove & refit rear windscreen glass.	180.00	120.00	100.00
6	To remove and refit doors complete fittings and replace damaged parts, transfer all fittings to new door.	300.00	240.00	40.00
7	To apply undercoating on repaired and replaced panel.	180.00	120.00	60.00
8	To provide labour charges, workmanship to dismantle above damaged parts, repair including cut and weld; re-align body structure and damaged consistent to the accident.	1500.00	1250.00	800.00
9	To respray paint including polish and wax on chaged body parts, repaired portions where consistent to the accident.	1600.00	1320.00	800.00
<b>TOTAL LABOUR COST</b>		<b>4290.00</b>	<b>3490.00</b>	<b>2000.00</b>

## COST OF CLAIM

Description	Repairer's Estimate (S\$)	CL Appraiser Pte Ltd (S\$)	Our Adjustment (S\$)
<b>Total Recommended Parts</b>	11707.96	9519.06	5773.85
<b>Total Recommended Labour</b>	4290.00	3490.00	2000.00
<b>Total Cost of Claim</b>	<b>15997.96</b>	<b>13009.06</b>	<b>7773.85</b>

**OUR FINDINGS AND RECOMMENDATION****OUR FINDINGS**

Based on the documents and photographs provided, we opine the repairs recommended were generally acceptable, except for the following items can be excluded on the basis as stated below :

**A) Items found to be reused**

- 1) FRONT O/S DOOR
- 2) REAR TYRE (DEPRECIATION)

**B) Items found to be repaired**

- 1) REAR BUMPER

**C) Items that does not warrant any replacement**

- 1) REAR O/S DOOR INNER LOCK

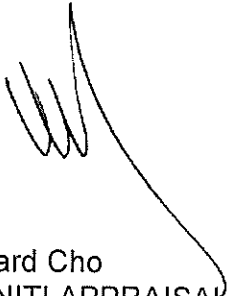
**OUR RECOMMENDATION**

We re-adjust the cost of recommended labour from S\$3,490.00 to S\$2,000.00.

For your understanding of our re-appraisal on parts and labour, the detailed listings are in 'RECOMMENDED SPARE PARTS' and 'RECOMMENDED LABOUR' respectively.

According to our re-appraisal the recommended repairs cost is S\$7,773.85, which includes spare parts cost of S\$5,773.85 and labour cost of S\$2,000.00 on part-by-part basis . We would state in conclusion the claim for the repairs to be considered at S\$6,200.00 on a lump sum basis with the repair period of 6 working days.

Our re-appraisal conducted to this vehicle was strictly on a without prejudice basis based upon the documents, photographs and information provided. We also state that it is done within our ability, knowledge and experience.



Edward Cho  
INFINITI APPRAISAL SERVICE

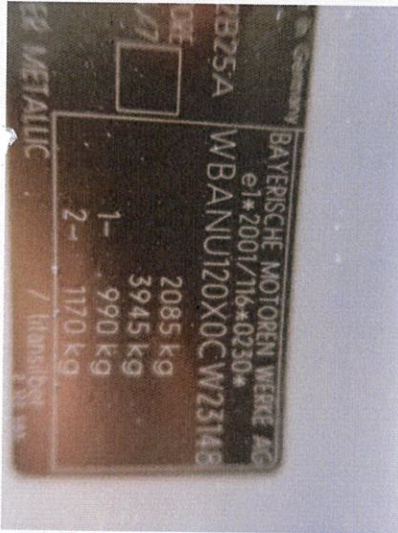


Cedric Ng  
INFINITI APPRAISAL SERVICE

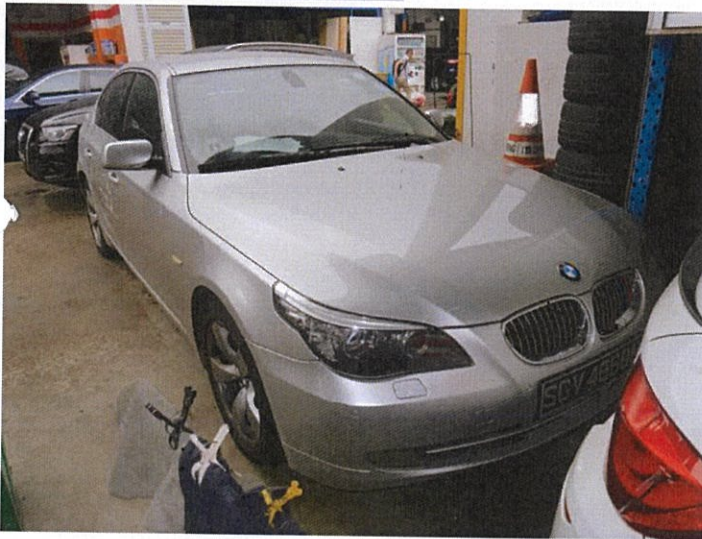
**SGV4868M [YP617R] - Submitted by: Infiniti Appraisal Service (HQ)**



1/65: PRI



2/65: PRI



3/65: PRI



**SGV4868M [YP617R] - Submitted by: Infiniti Appraisal Service (HQ)**



4/65: PRI



5/65: PRI



6/65: PRI

**SGV4868M [YP617R] - Submitted by: Infiniti Appraisal Service (HQ)**



7/65: PRI



8/65: PRI



9/65: PRI



SGV4868M [YP617R] - Submitted by: Infiniti Appraisal Service (HQ)



10/65: PRI



11/65: PRI



12/65: PRI



SGV4868M [YP617R] - Submitted by: Infiniti Appraisal Service (HQ)



13/65: PRI



14/65: PRI

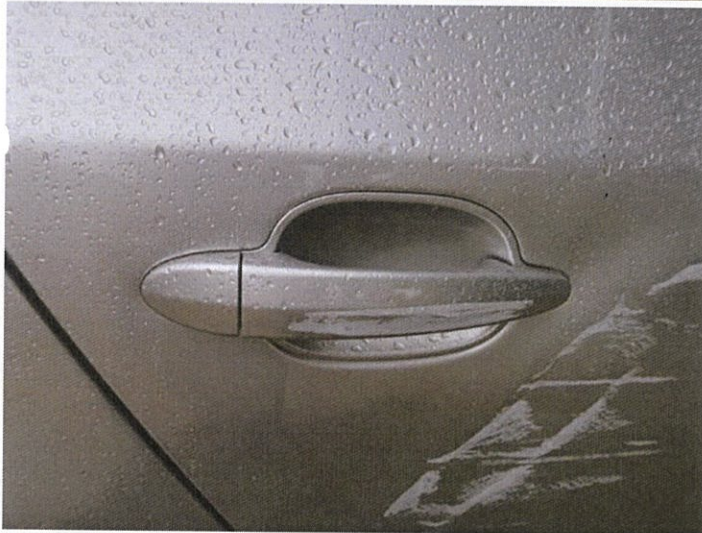


15/65: PRI

**SGV4868M [YP617R] - Submitted by: Infiniti Appraisal Service (HQ)**



16/65: PRI



17/65: PRI



18/65: PRI



**SGV4868M [YP617R] - Submitted by: Infiniti Appraisal Service (HQ)**



19/65: PRI



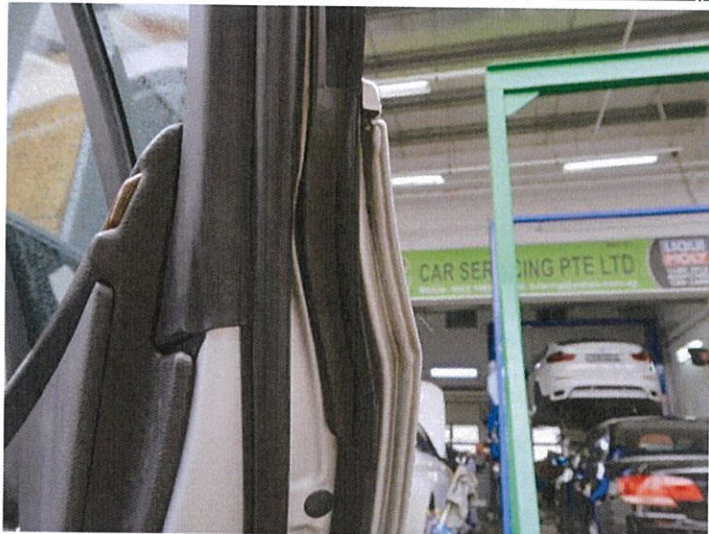
20/65: PRI



21/65: PRI



**SGV4868M [YP617R] - Submitted by: Infiniti Appraisal Service (HQ)**



22/65: PRI



23/65: PRI



24/65: PRI

SGV4868M [YP617R] - Submitted by: Infiniti Appraisal Service (HQ)



25/65: PRI



26/65: PRI



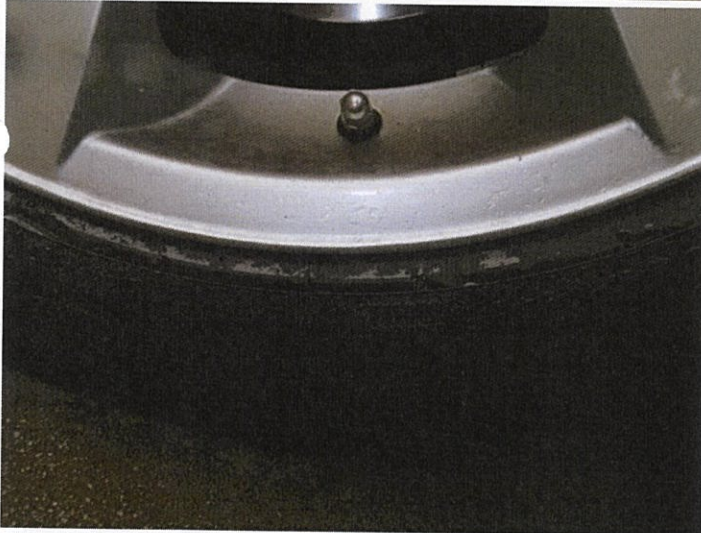
27/65: PRI



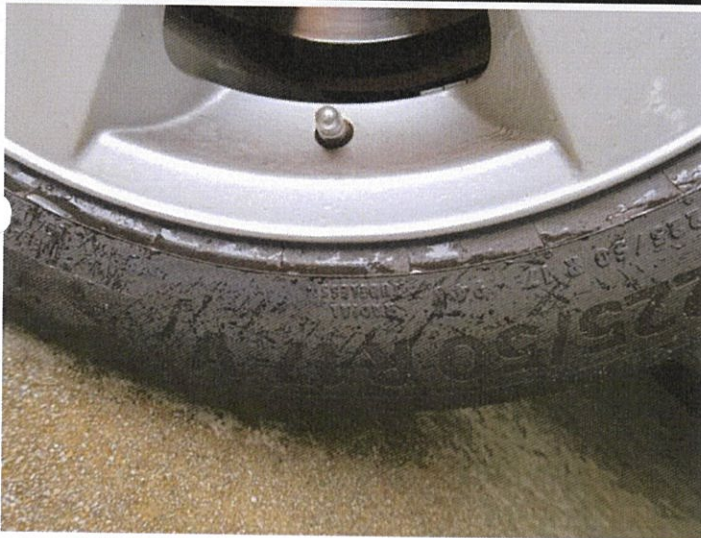
**SGV4868M [YP617R] - Submitted by: Infiniti Appraisal Service (HQ)**



28/65: PRI



29/65: PRI



30/65: PRI



**SGV4868M [YP617R] - Submitted by: Infiniti Appraisal Service (HQ).**



31/65: RS



32/65: RS



33/65: RS

**SGV4868M [YP617R] - Submitted by: Infiniti Appraisal Service (HQ)**



34/65: RS



35/65: RS



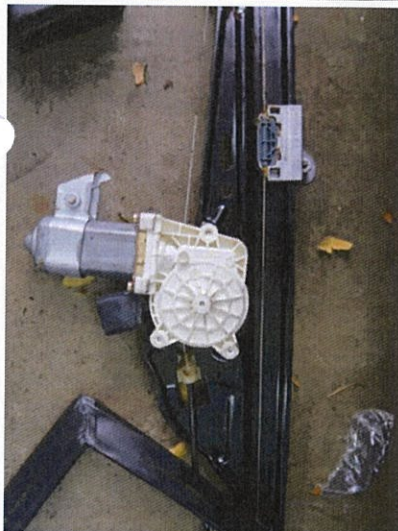
36/65: RS



SGV4868M [YP617R] - Submitted by: Infiniti Appraisal Service (HQ).



37/65: RS



38/65: RS



39/65: RS



**SGV4868M [YP617R] - Submitted by: Infiniti Appraisal Service (HQ)**



40/65: RS



41/65: RS



42/65: RS AR

**SGV4868M [YP617R] - Submitted by: Infiniti Appraisal Service (HQ)**



43/65: RS AR



44/65: RS AR



45/65: RS AR



**SGV4868M [YP617R] - Submitted by: Infiniti Appraisal Service (HQ)**



46/65: RS AR



47/65: RS AR



48/65: RS AR



**SGV4868M [YP617R] - Submitted by: Infiniti Appraisal Service (HQ)**



49/65: RS AR



50/65: RS AR



51/65: RS AR

**SGV4868M [YP617R] - Submitted by: Infiniti Appraisal Service (HQ)**



52/65: RS AR



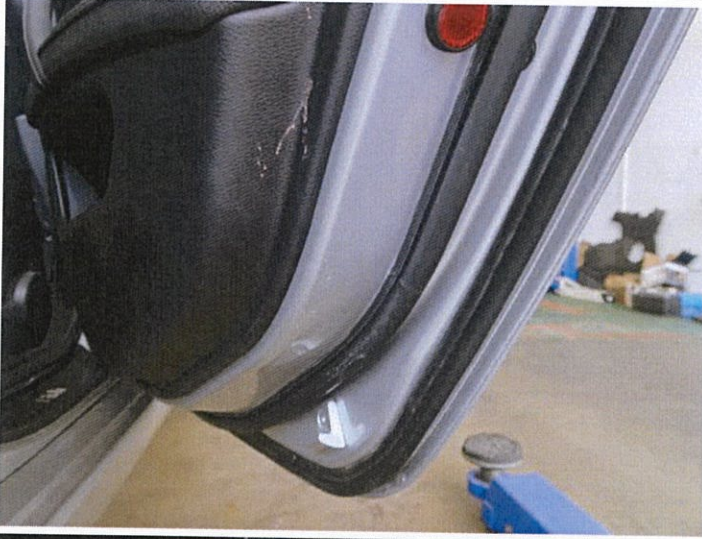
53/65: RS AR



54/65: RS AR



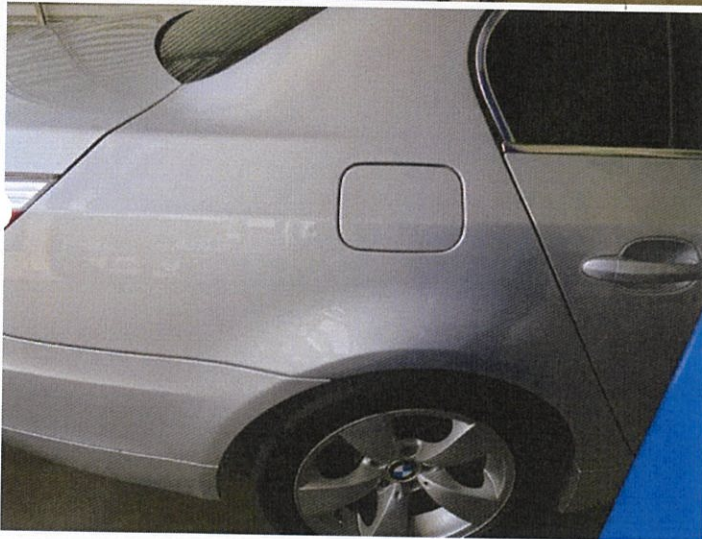
SGV4868M [YP617R] - Submitted by: Infiniti Appraisal Service (HQ)



55/65: RS AR



56/65: RS AR



57/65: RS AR

SGV4868M [YP617R] - Submitted by: Infiniti Appraisal Service (HQ)



58/65: RS AR



59/65: RS AR



60/65: RS AR



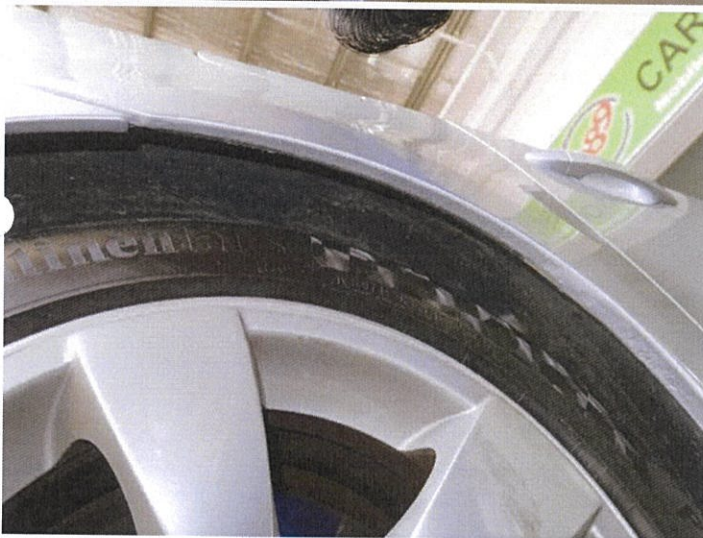
SGV4868M [YP617R] - Submitted by: Infiniti Appraisal Service (HQ)



61/65: RS AR



62/65: RS AR

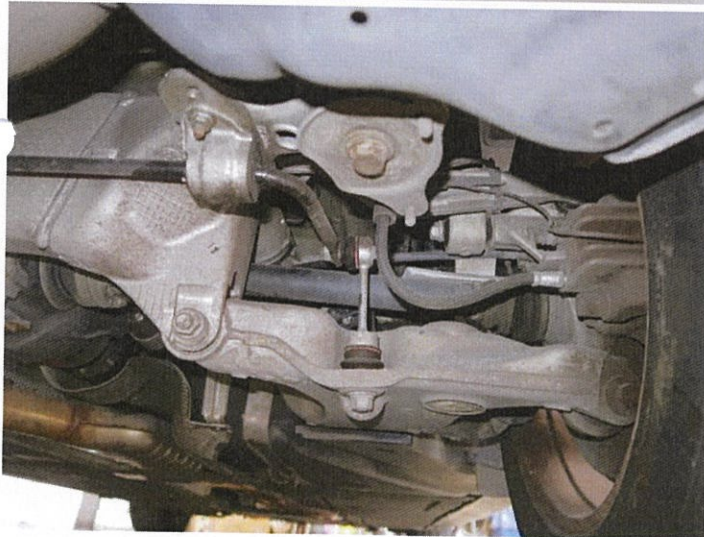


63/65: RS AR

**SGV4868M [YP617R] - Submitted by: Infiniti Appraisal Service (HQ)**



64/65: RS AR



65/65: RS AR