

Our reference: 21-8078

Date: 30/8/2021

INVOICE NO. 8078

Chasen Logistics Service Limited

c/o Garage 13 Pte Ltd

8 Kaki Bukit Ave 4

#03-46 Premier@KB

Singapore 415875

Registration No. **SMN3221G**

We enclose our fee note for your kind attention, which remains payable irrespective of the outcome of this case.

S/No.	Description of Services Provided	Qty	Amount
1	Being vehicle damage assessment report, inspection, photographs, transport and miscellaneous.	1	\$ 1,092.00
Total amount			<u>\$ 1,092.00</u>

Please kindly cross all cheques made payable to "Impact Analysis Consultant".

We thank you in anticipation for your prompt payment.



L. L. Tan (Ms)
Principal Consultant

Subsidiaries of Impact Analysis Consultant:

- Impact Analysis Consulting Pte Ltd • Impact Analysis Academy Pte Ltd • IA Racking Solutions Pte Ltd
 - IA Accounting & Consultancy Pte Ltd • Infoknights International Services (Philippines) • IABN Pte Ltd
- www.iaconsultingsg.com

Practicing Management Consultant (PMC) of SBACC
Approved Training Organisation (ATO) of Workforce Singapore

Our reference: 21-8078

Date: 30/8/2021

c/o Garage 13 Pte Ltd
8 Kaki Bukit Ave 4
#03-46 Premier@KB
Singapore 415875

Dear Sirs

**RE: Road Traffic Accident on 20/8/2021
Chasen Logistics Service Limited**

In accordance with your instructions received in this office on **20/8/2021**, we made arrangements to examine the vehicle on **20/8/2021** at above-mentioned address. The following data was recorded:

Vehicle details

Make	Mazda	Registration	SMN3221G
Model	6	Chassis	JM6GL1072K0313341
Colour	Dark Blue	Gearbox	Auto
Odometer	87019km	Paintwork	Good
Steering	In order	Brakes	In order
Condition	Good		

Tyre Depths

Front left	225/55R17	85% Goodyear
Front right	225/55R17	85% Goodyear
Rear left	225/55R17	85% Goodyear
Rear right	225/55R17	85% Goodyear

Impact Direction & Area of Damage:



Status	REPAIRABLE
Magnitude	Medium
Legal status	Unroadworthy

Following our examination of the accident damage, we have calculated repair times and method, which are detailed on page 2 & 3. We would recommend a sum of **\$21,681.84** and **11** working days for repair, which is sufficiently lower than the pre accident value to render the vehicle an economically and physically reliable proposition.

Subsidiaries of Impact Analysis Consultant:

- Impact Analysis Consulting Pte Ltd • Impact Analysis Academy Pte Ltd • IA Racking Solutions Pte Ltd
 - IA Accounting & Consultancy Pte Ltd • Infoknights International Services (Philippines) • IABN Pte Ltd
- www.iaconsultingsg.com

Our reference 21-8078

Date 30/8/2021

Page 2

Section A: Damaged Parts Assessment

Part's Description	Qty	Condition As inspected	Repairer's Estimate	Our Adjustment
List Items :				
Front bumper	1	broken	1298.90	1298.90
Front bumper side retainer lh	1	damaged	39.80	39.80
Front bumper top chrome	1	cut.bent	297.80	297.80
Headlamp lh	1	cracked	4899.10	4899.10
Headlamp bracket lh	1	repair	85.00	85.00
Bonnet - slightly warped	1	repair.respray	989.90	0.00
Front fender lh	1	crushed	455.60	455.60
Front fender inner cowling lh	1	torn	112.00	112.00
Front fender bracket lh	1	bent	59.00	59.00
Front fender inner panel lh	1	repair	344.10	0.00
Front support top panel - slightly bent	1	repair.	642.10	0.00
Side mirror casing lh	1	cut.grazed	298.90	298.90
Side mirror motor lh	1	serviceable	322.00	0.00
Front door lh	1	crushed	1215.50	1215.50
Front door lock lh	1	jammed.cracked	275.40	275.40
Front door hinge @\$75.50 lh	2	distorted	151.00	151.00
Front door check lh	1	bent	55.80	55.80
Front door inner board lh	1	damaged	458.40	458.40
Front door glass lh	1	cracked	568.40	568.40
Front door glass top chrome moulding lh	1	grazed.cut	214.50	214.50
Front door lower chrome moulding lh	1	bent	185.90	185.90
Front door outer handle lh	1	damaged	108.00	108.00
Front door keyless entry sensor lh	1	damaged	211.00	211.00
Front door knob cover lh	1	grazed	26.00	26.00
Front door weatherstrip lh	1	ripped.nec	189.79	189.79
Front door glass gear regulator lh	1	bent	276.00	276.00

Subsidiaries of Impact Analysis Consultant:

• Impact Analysis Consulting Pte Ltd • Impact Analysis Academy Pte Ltd • IA Racking Solutions Pte Ltd
• IA Accounting & Consultancy Pte Ltd • Infoknights International Services (Philippines) • IABN Pte Ltd
www.iaconsultingsg.com

Our reference 21-8078

Date 30/8/2021

Front door glass gear regulator motor lh	1	ceased	286.80	286.80
Front door outer handle inner bracket lh	1	cracked	99.70	99.70
Front door glass run channel lh	1	necessary	133.80	133.80
Rear door lh	1	crushed	1385.50	1385.50
Rear door lock lh	1	cracked	275.40	275.40
Rear door hinge @\$75.50 lh	2	distorted	151.00	151.00
Rear door check lh	1	bent	55.80	55.80
Rear door inner board lh	1	cracked	461.40	461.40
Rear door glass top chrome moulding lh	1	refix	214.50	0.00
Rear door lower chrome moulding lh	1	refix	185.90	0.00
Rear door outer handle lh	1	damaged	132.10	132.10
Rear door handle knob lh	1	damaged	48.50	48.50
Rear door weatherstrip lh	1	torn.nec	189.79	189.79
Rear door glass gear regulator lh	1	bent	276.00	276.00
Rear door glass gear regulator motor lh	1	ceased	286.80	286.80
Rear door outer handle inner bracket lh	1	cracked	108.00	108.00
Rear door glass run channel lh	1	necessary	133.80	133.80
Rear door 1/4 glass garnish lh	1	grazed.cut	88.00	88.00
Rear door vertical garnish lh	1	cut	98.70	98.70
Centre door pillar "B" Lower lh	1	bent	199.00	199.00
Centre door pillar "B" upper lh	1	repair.respray	312.40	0.00
Rear fender lh	1	crushed	1312.10	1312.10
Rear windscreen moulding	1	necessary	133.40	133.40
Rear bumper	1	deformed	1138.00	1138.00
Rear bumper reflector	1	holder cracked	65.80	65.80
Rear bumper side retainer	1	cracked	41.20	41.20
Rear exhaust pipe tip - grazed	1	reuse.refinish	125.10	0.00
Rear lateral arm lh	1	bent	198.50	198.50
Rear trailing arm lh	1	bent	254.80	254.80
Rear lower control arm lh	1	bent	299.80	299.80
Rear knuckle arm lh	1	bent	432.10	432.10

Subsidiaries of Impact Analysis Consultant:

• Impact Analysis Consulting Pte Ltd • Impact Analysis Academy Pte Ltd • IA Racking Solutions Pte Ltd
• IA Accounting & Consultancy Pte Ltd • Infoknights International Services (Philippines) • IABN Pte Ltd
www.iaconsulting.sg.com

Practicing Management Consultant (PMC) of SBACC

Approved Training Organisation (ATO) of Workforce Singapore

Our reference 21-8078

Date 30/8/2021

Rear knuckle arm bearing lh	1	necessary	158.40	158.40
Rear knuckle arm bearing hub lh	1	necessary	204.70	204.70
Sub- Total cost			23266.68	20130.68
Percentage discount : 20%			4653.34	4026.14
Sub-Total costs for parts			18613.34	16104.54

Special Nett Items:

Front bumper parking sensor (orginal)	set	mlafuction	345.80	345.80
Rear door audio speaker lh	1	cracked	250.00	250.00
Rear tyre rim lh	1	abraded.cut	598.80	598.80
Rear bumper clips	set	necessary	50.00	20.00
Front bumper clips	set	necessary	50.00	20.00
Reverse sensor	set	refix	280.00	0.00
Rear windscreen sealant	1	necessary	50.00	50.00
Rear fender sealant lh	1	necessary	40.00	40.00
Rear / front door sealant lh	1	necessary	40.00	40.00
Centre door pillar "B" Lower sticker lh	1	necessary	16.20	16.20
Sub-Total costs for parts			1720.80	1380.80

Parts Repair

*	*	*	0.00	0.00
Sub- Total costs			0.00	0.00
Total costs for parts			20334.14	17485.34

Subsidiaries of Impact Analysis Consultant:

• Impact Analysis Consulting Pte Ltd • Impact Analysis Academy Pte Ltd • IA Racking Solutions Pte Ltd
• IA Accounting & Consultancy Pte Ltd • Infoknights International Services (Philippines) • IABN Pte Ltd
www.iaconsultingsg.com

Our reference 21-8078

Date 30/8/2021

Page 3

Section B: Labour Cost Calculation

	Hourly rate	Manhr. Req.	Total
To dismantle, replace, cut, weld, knock out dents to straighten accident parts as-mentioned on the 'Parts Repair' column inclusive of replacement parts.	\$ 45.00	35	\$ 1,575.00
Putty & Spray painting to adjacent panels. Job allowance. Paint / material. (8 panels)	Sub-contract work.		\$ 1,550.00
Apply rust proofing on the adjacent panels.	Sub-contract work.		\$ 80.00
Transfer of existing front door mechanism to new door lh	\$ 45.00	2	\$ 90.00
Remove and refix rear windscreen (2 man-job)	\$ 45.00	3.5	\$ 157.50
Remove and refix upholstery and cushion seat to facilitate repair of rear fender lh	\$ 45.00	2	\$ 90.00
Transfer of existing front door mechanism to new door lh	\$ 45.00	2	\$ 90.00
Remove and refix fuel tank	\$ 45.00	1.9	\$ 85.50
Conduct water leak test for rear portion associated repair works	\$ 45.00	1.5	\$ 67.50
Remove and replace rear undercarriage works lh	\$ 45.00	5	\$ 225.00
Specialist charges - Wheel alignment	-	-	\$ 60.00
Remove and refix rear reverse sensor	\$ 45.00	1.8	\$ 81.00
Wiring / bulb checking (inclusive of re-focus / re-adjust on angle of light intensity.)	\$ 45.00	1	\$ 45.00
Total labour cost			\$ 4,196.50

Manhour rate and the number of manhours required for each repairing task are formulated based on individual workshop's operating cost and in-house@ IA Research Guidelines respectively.

Subsidiaries of Impact Analysis Consultant:

- Impact Analysis Consulting Pte Ltd • Impact Analysis Academy Pte Ltd • IA Racking Solutions Pte Ltd
- IA Accounting & Consultancy Pte Ltd • Infoknights International Services (Philippines) • IABN Pte Ltd

www.iaconsultingsg.com

Our reference 21-8078

Date 30/8/2021

Section C: Summary Table of Total Repair Cost

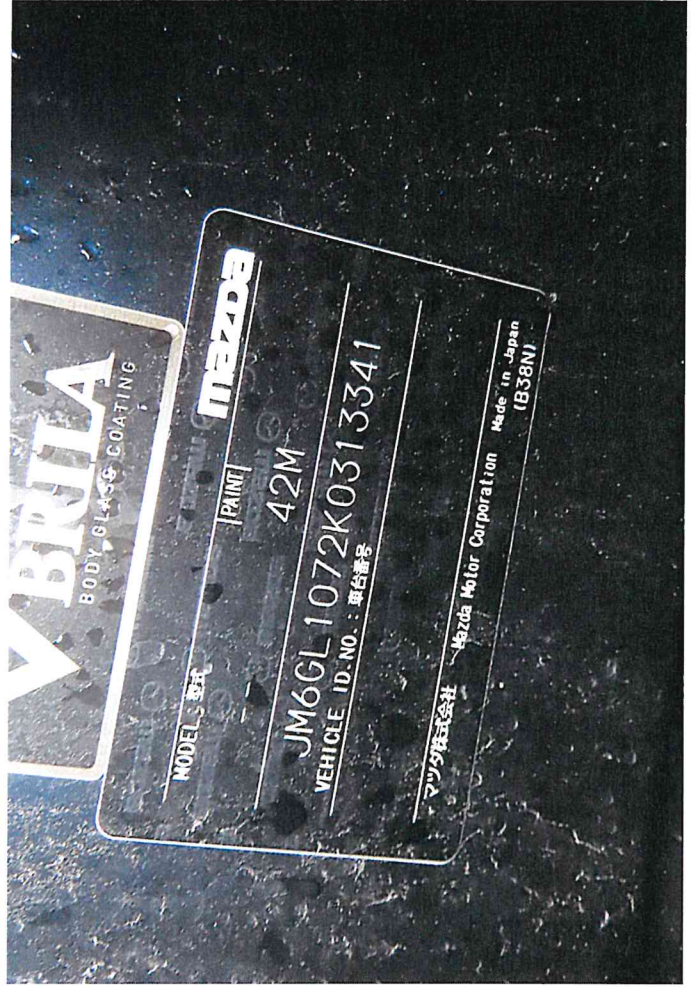
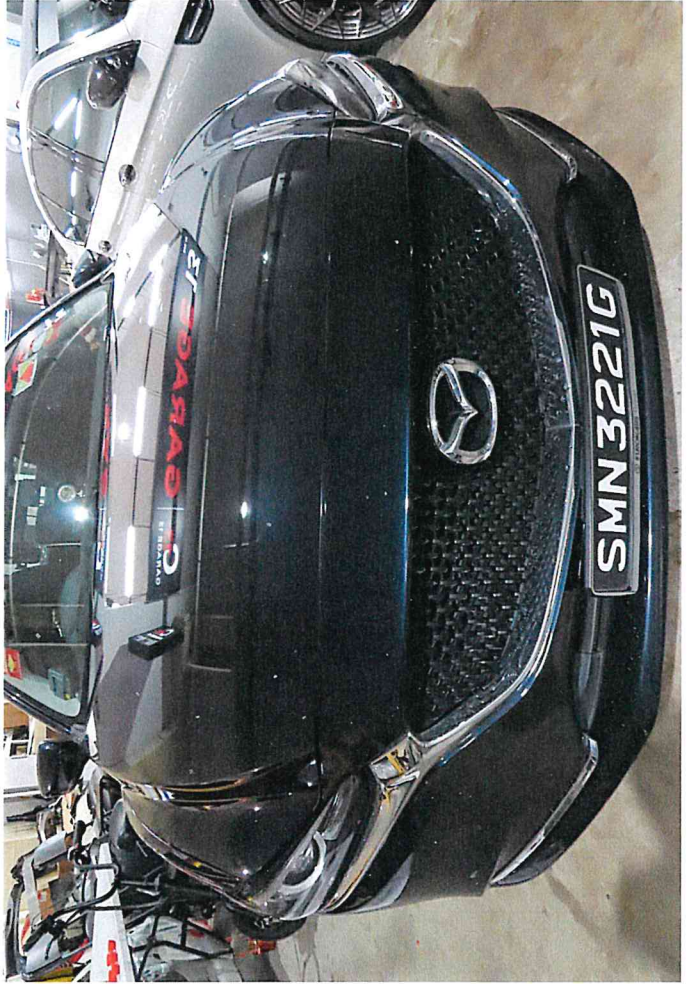
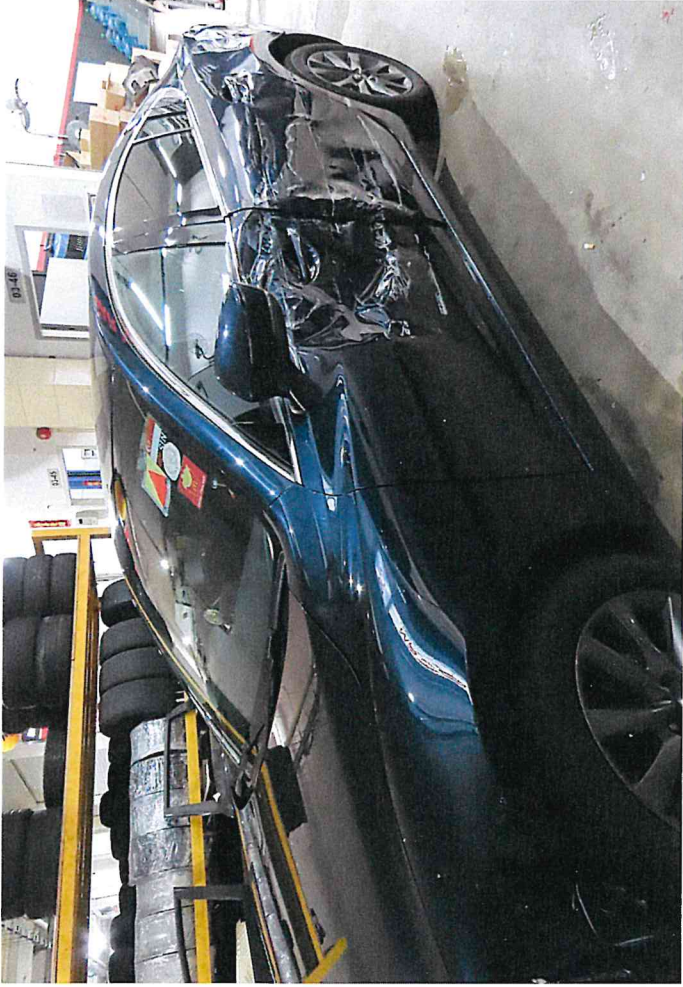
Description		Cost
Damaged Parts Assessment (See section A)		\$17,485.34
Labour Cost Calculation (See section B)		\$4,196.50
Total cost		\$21,681.84
Part-By-Part		\$0.00
Further discount	0%	
Total Repair Cost		\$21,681.84

We would recommend a sum of **\$21,681.84** and **11** working days for repair.
No further items will be approved without our expressed written agreement. Any significant additional items will be subject to a supplementary report.

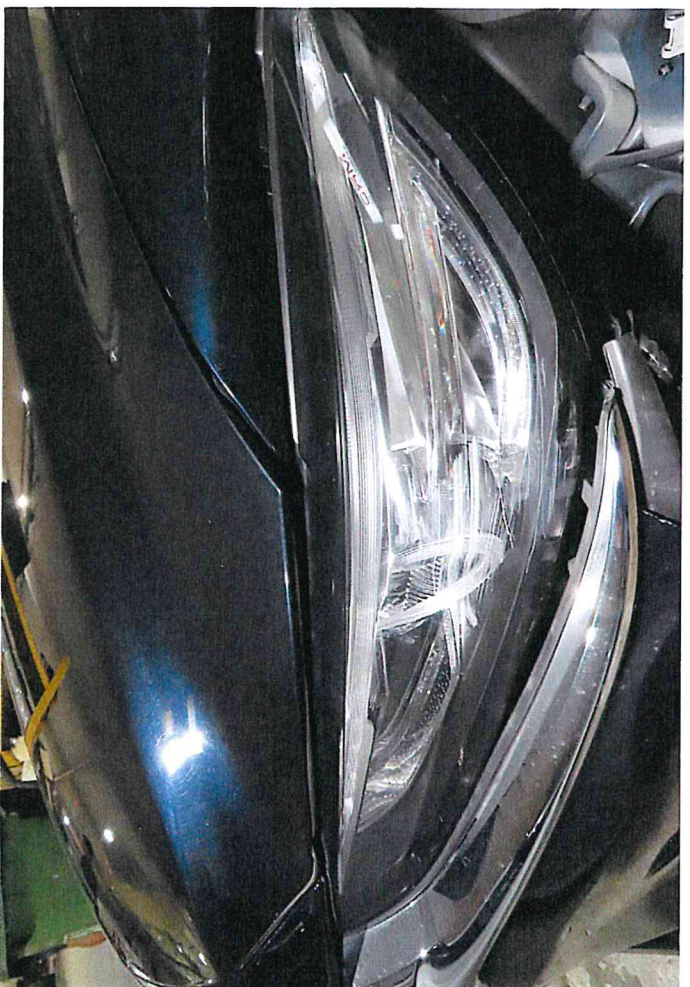

Mechanical Engineer, Accident Expert Witness, Licensed Appraiser (Automobile)
B.Eng. (Hons, NUS)
Diploma. Mechanical Engineering
NTC-2 Automovite Technology
Sr.MIES, Institution of Engineers, Singapore (#20100091)
MATAI, Maryland Association of Traffic Accident Investigators
IAARS, International Association of Accident Reconstruction Specialists
PMC of Singapore Business Advisors & Consultants Council
ACTA certified Trainer, Singapore
Enterprise Singapore - Recognised Certification for Management Consultants
IMI Professional Certificate In Vehicle Accident Damage Assessment (UK)

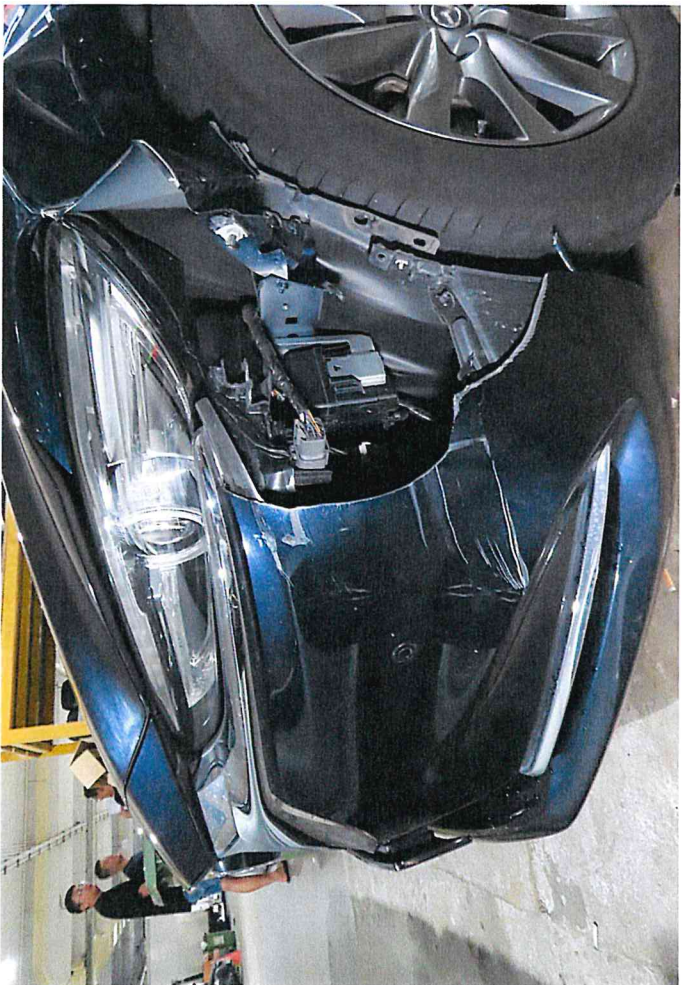
Subsidiaries of Impact Analysis Consultant:

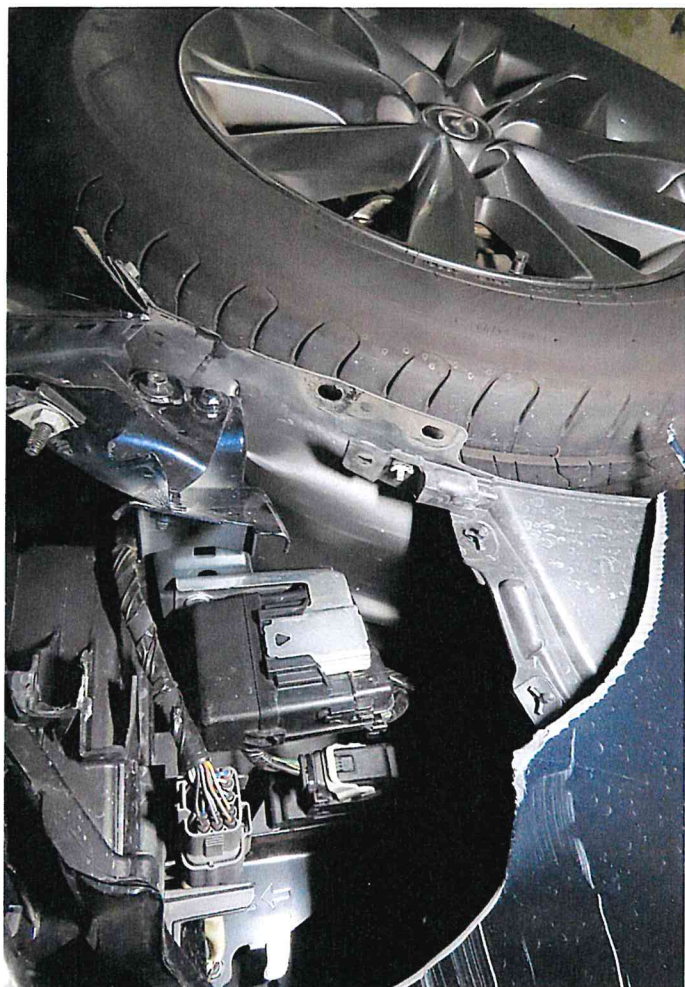
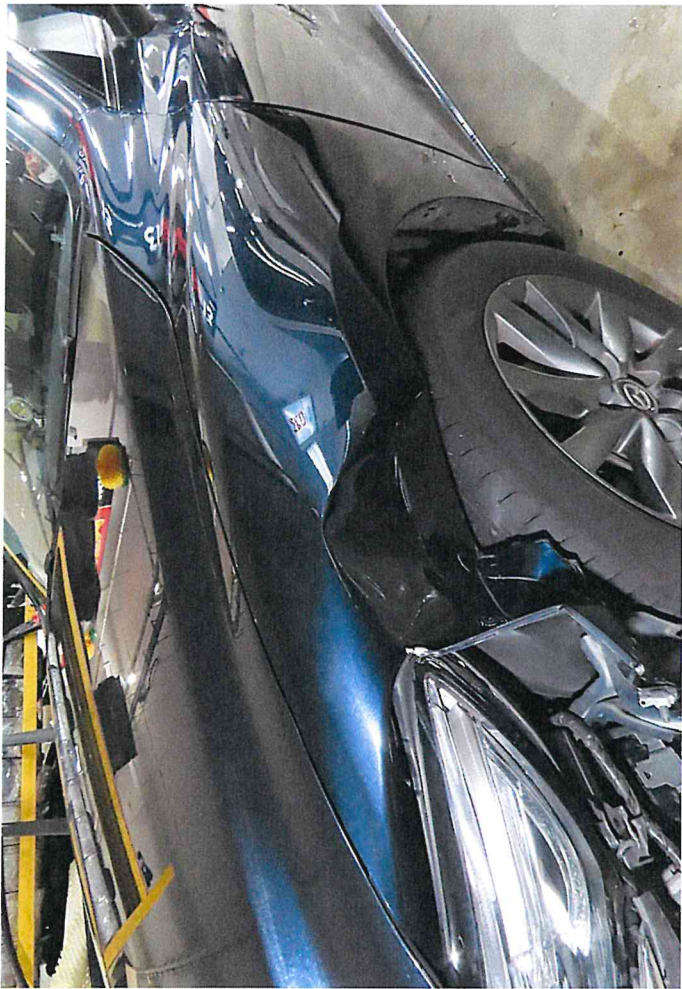
- Impact Analysis Consulting Pte Ltd • Impact Analysis Academy Pte Ltd • IA Racking Solutions Pte Ltd
 - IA Accounting & Consultancy Pte Ltd • Infoknights International Services (Philippines) • IABN Pte Ltd
- www.iaconsultingsg.com

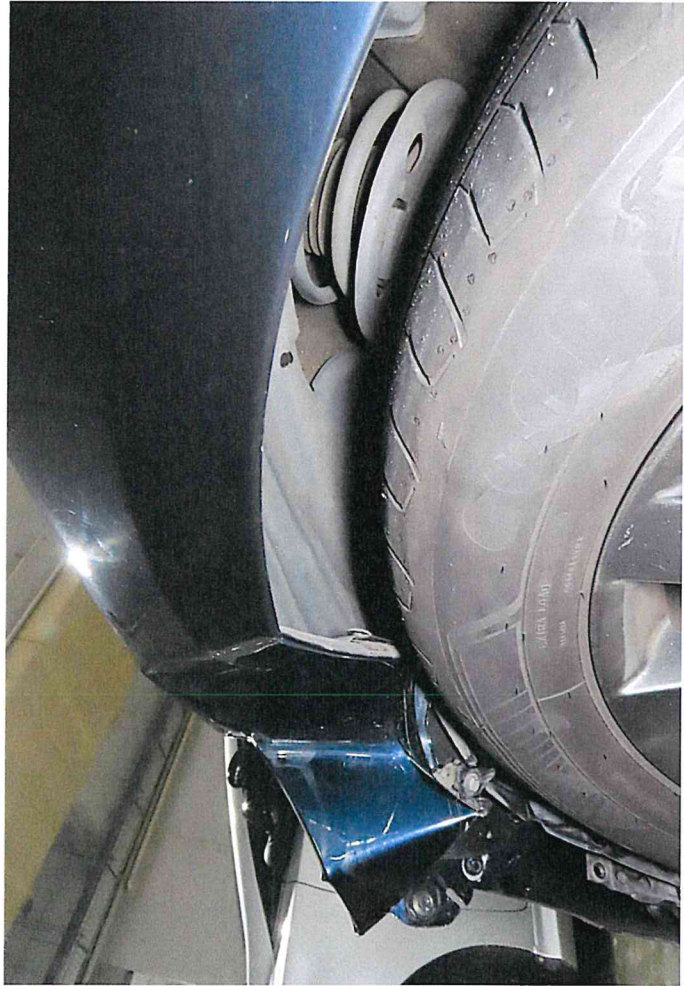


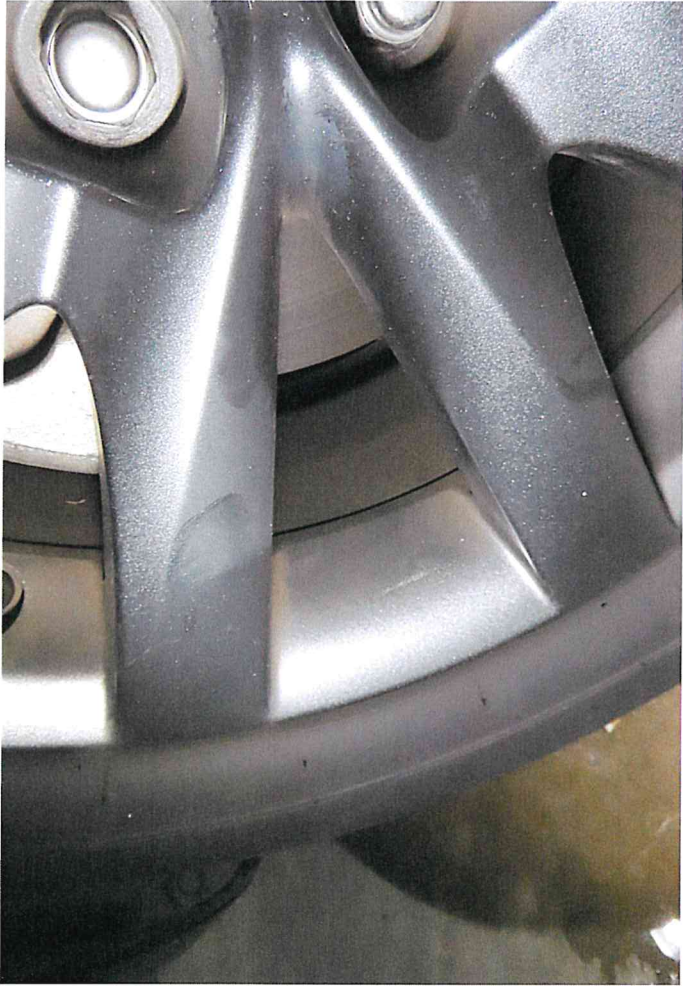


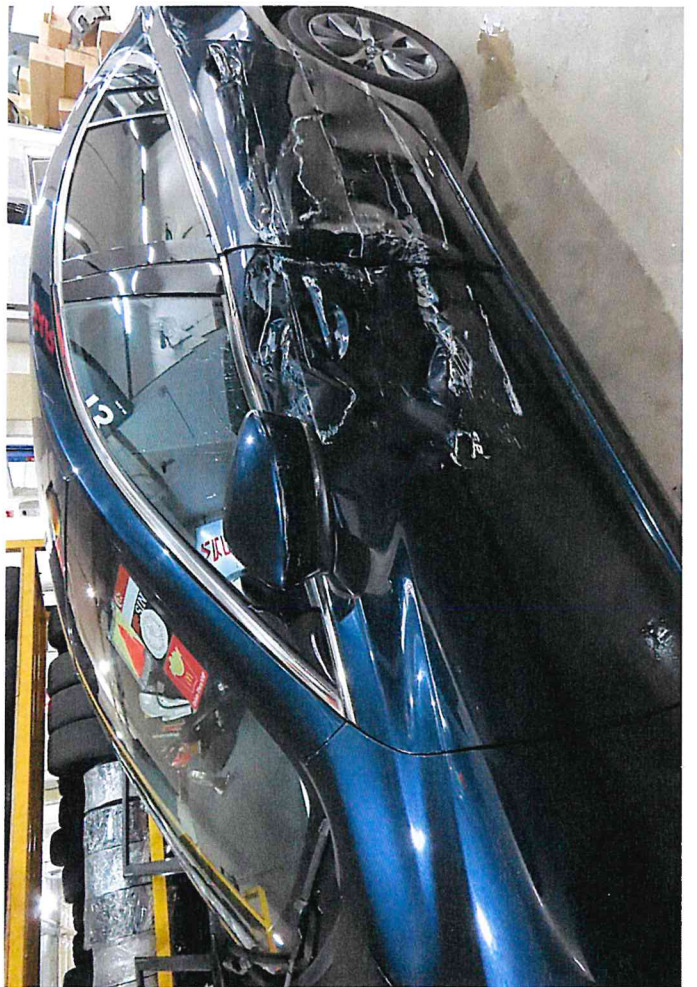
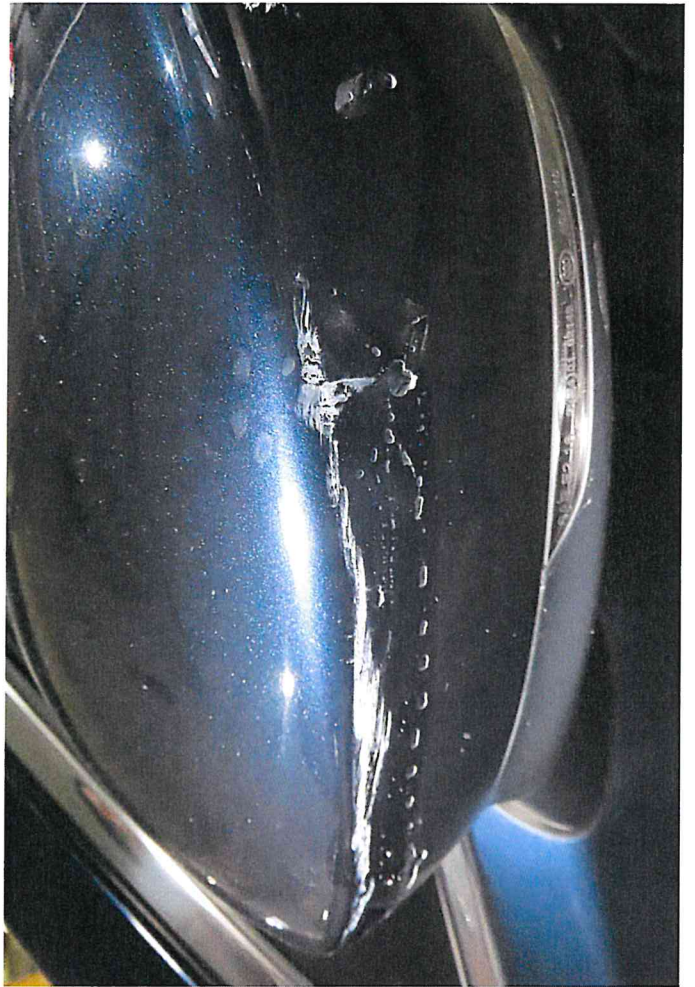


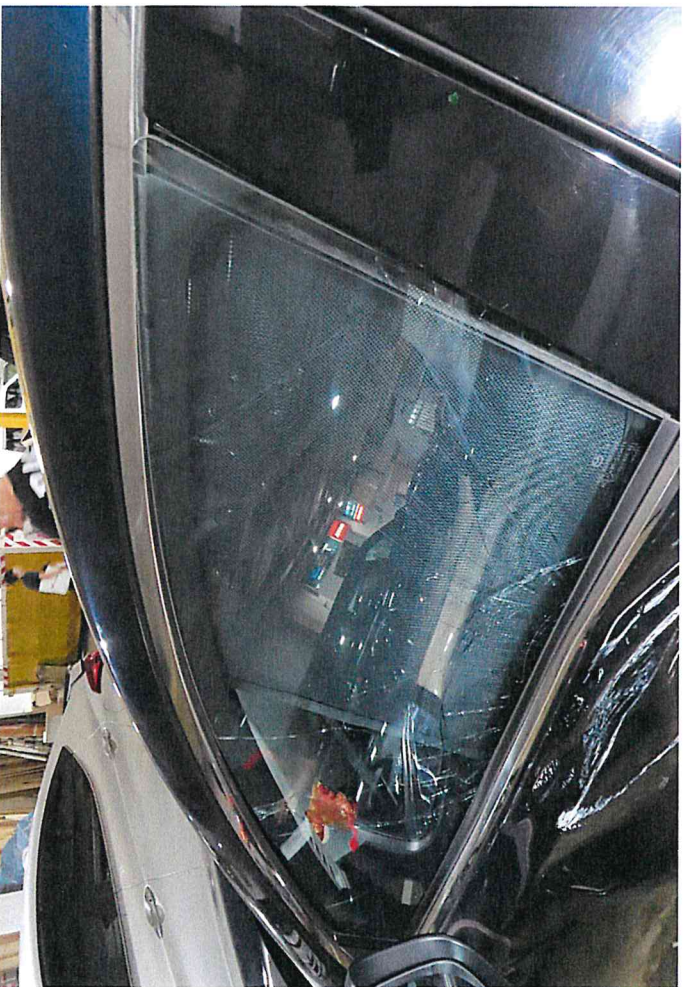
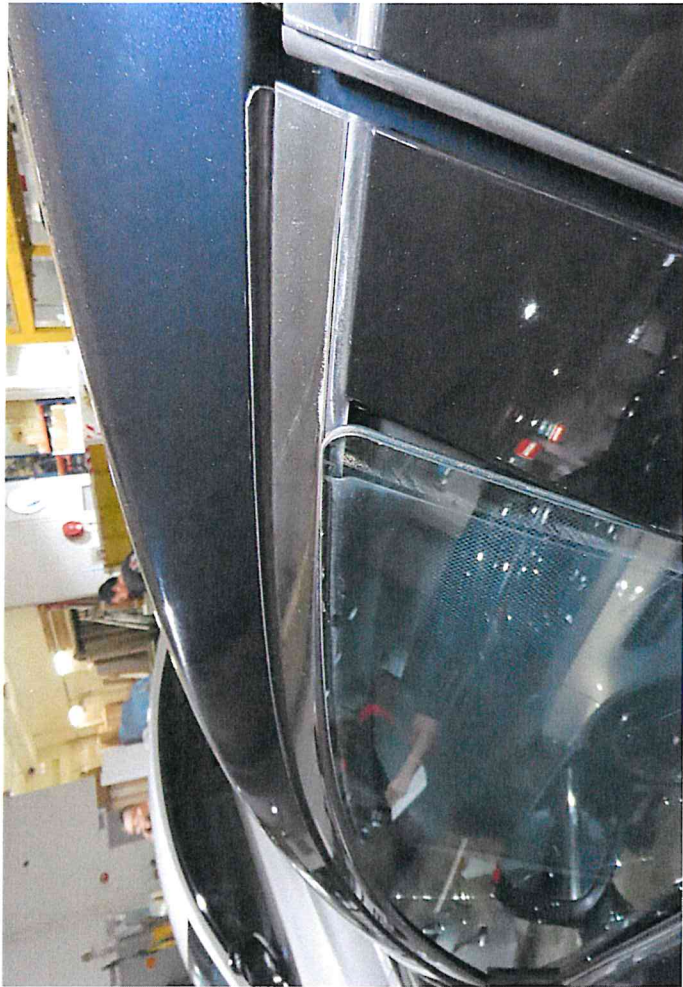


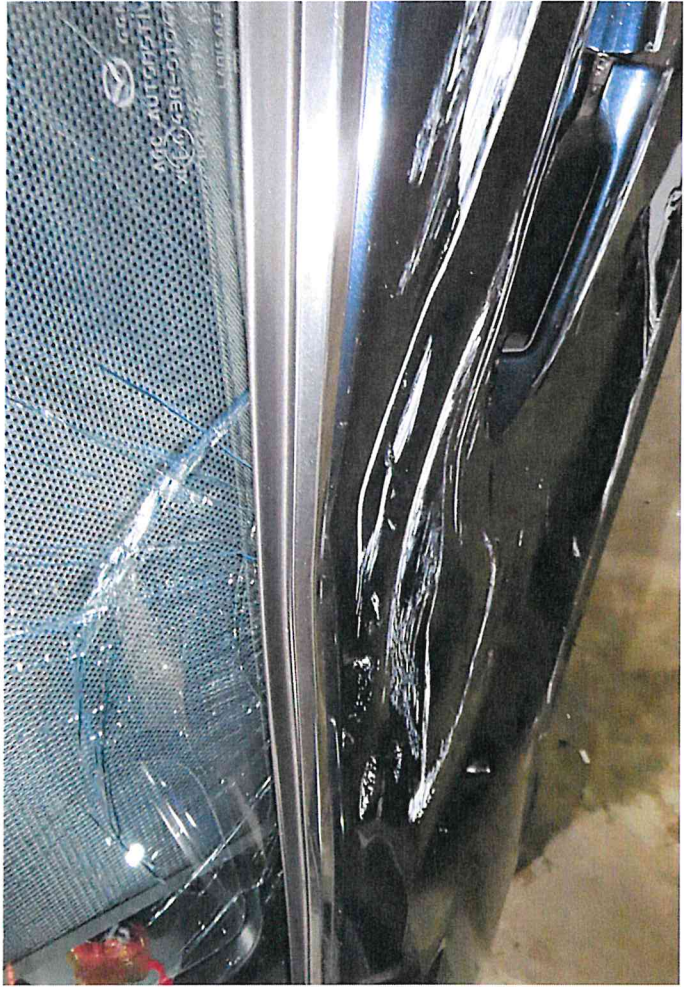


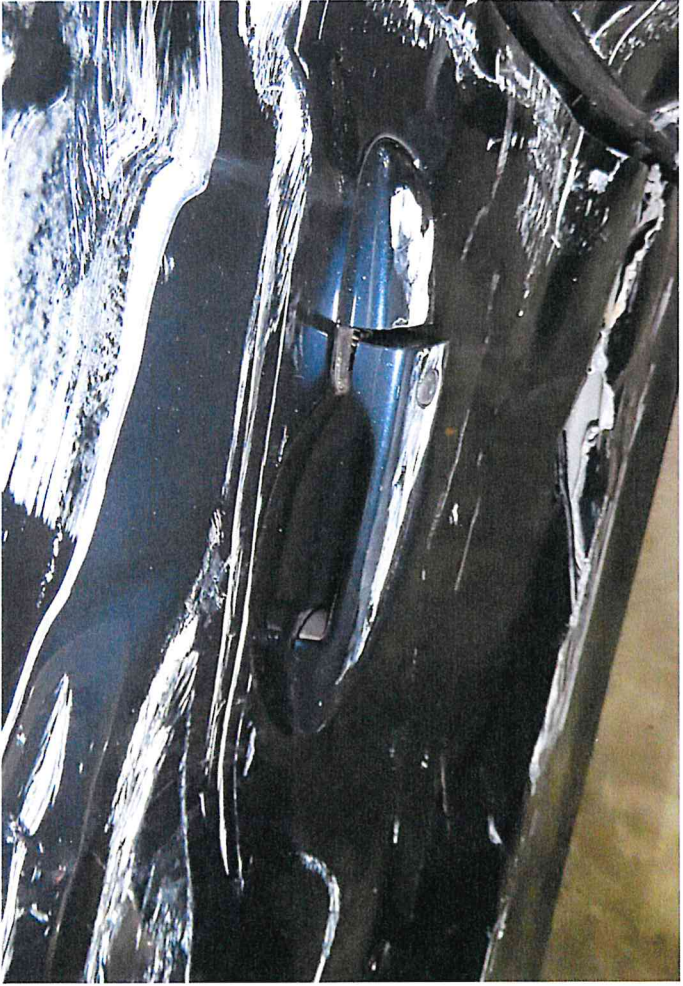
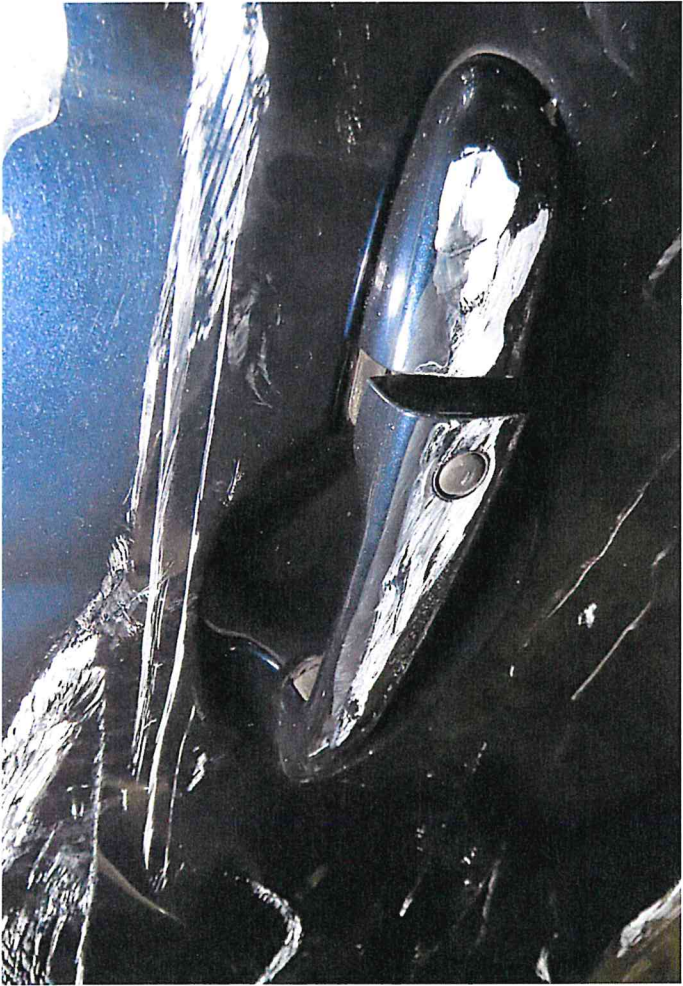
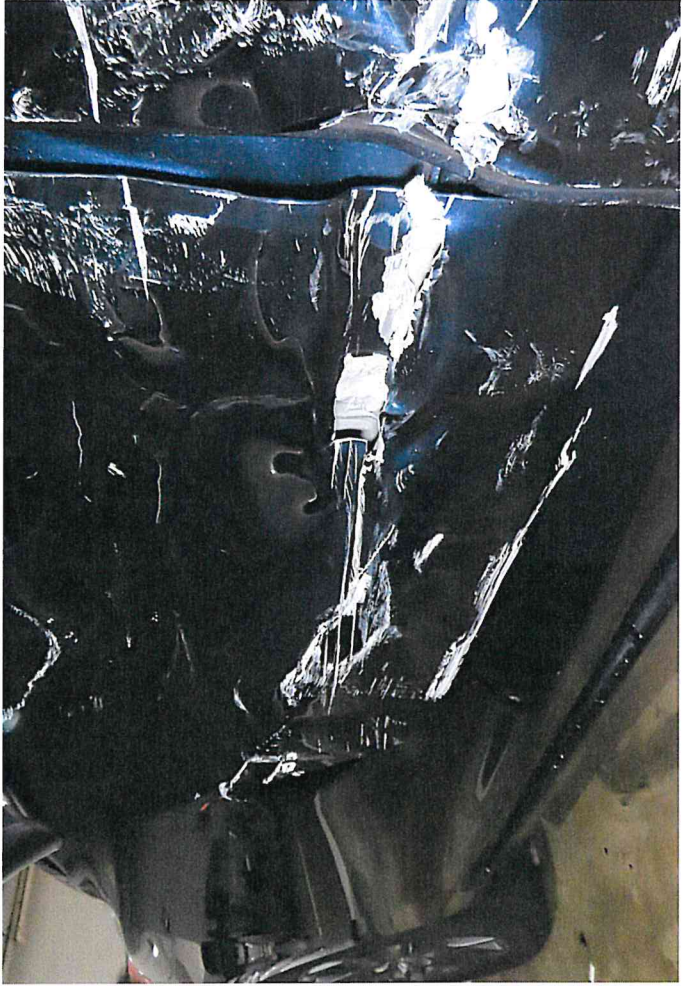




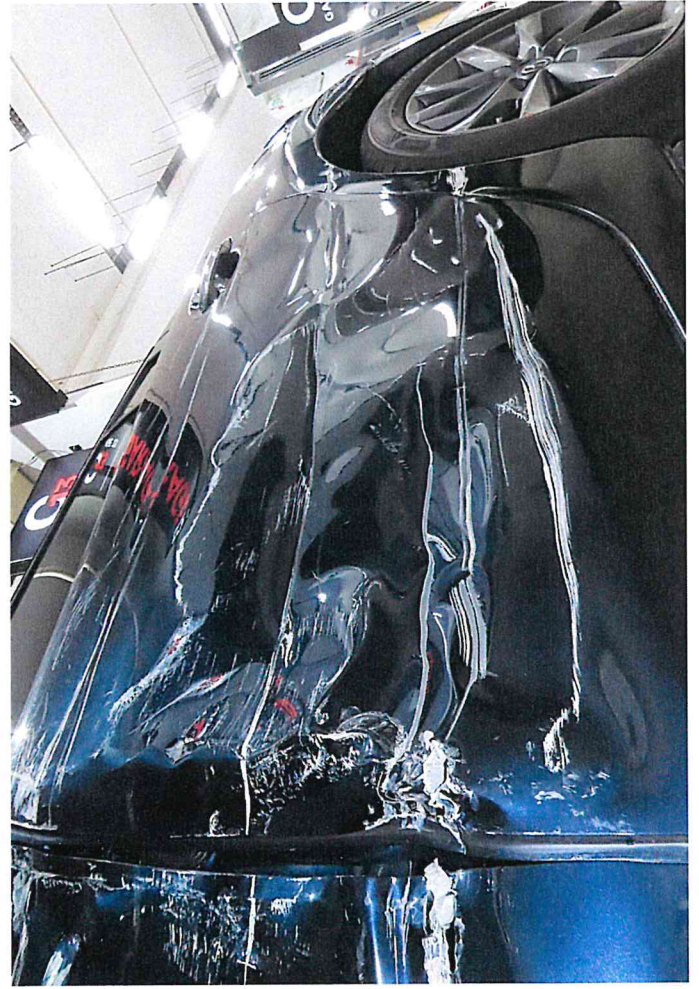
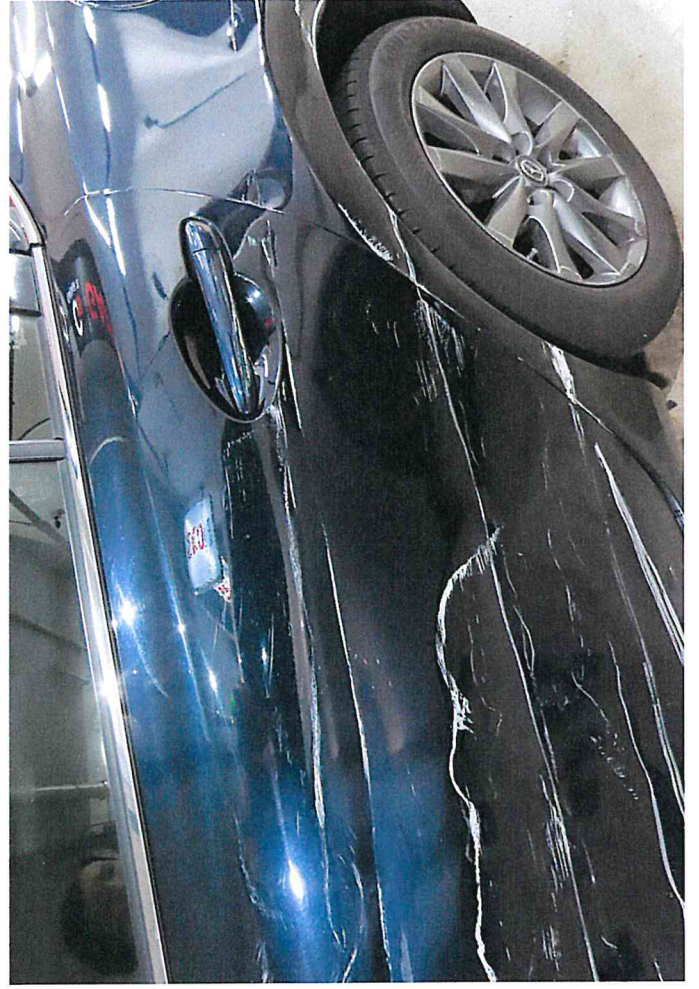
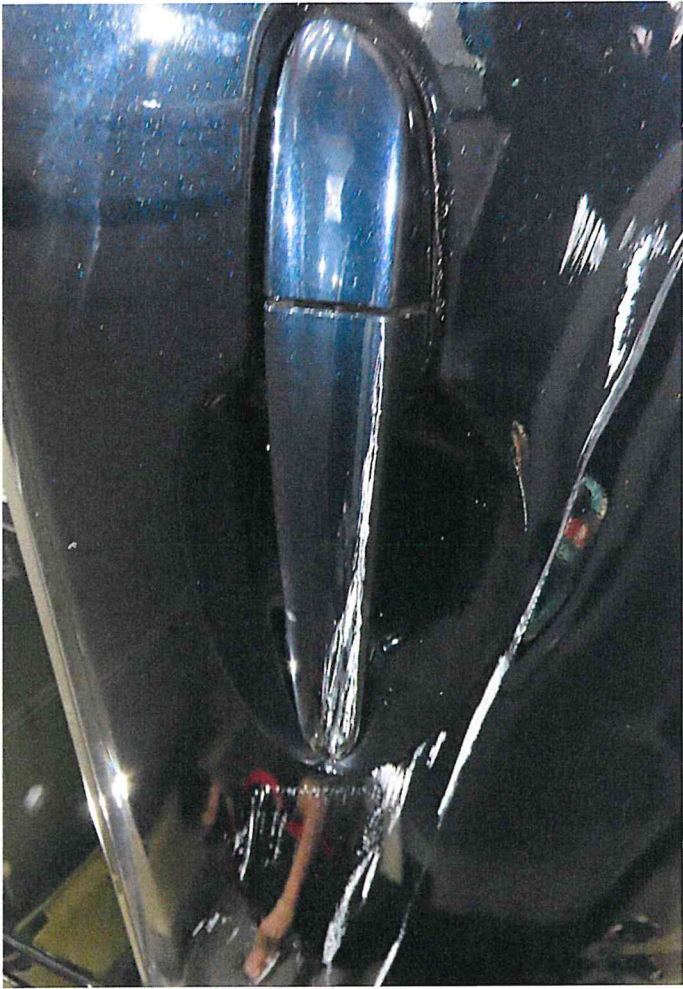


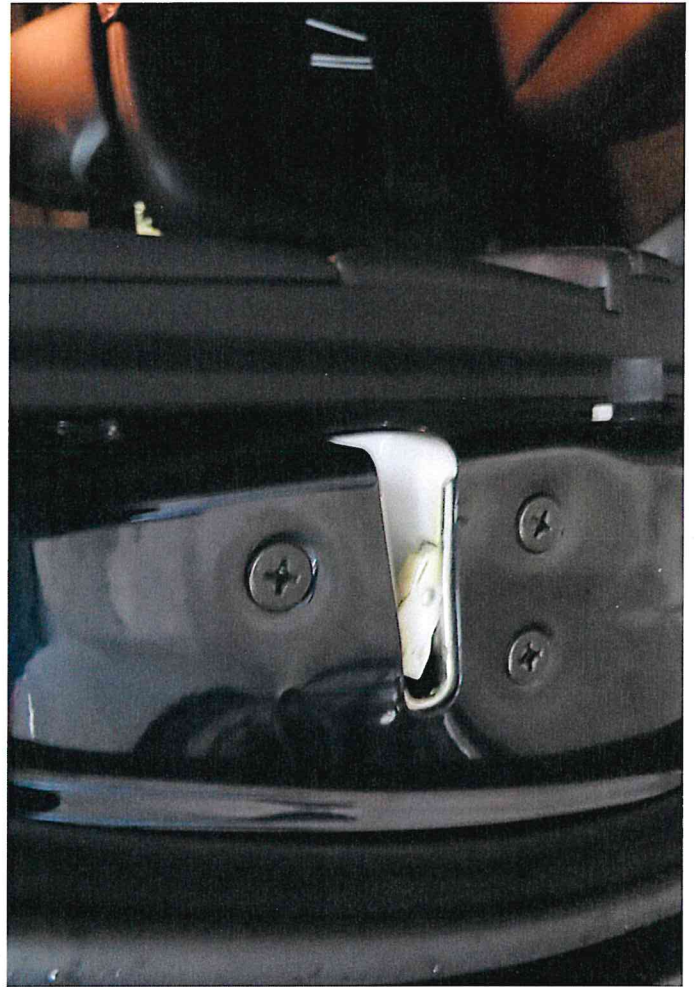


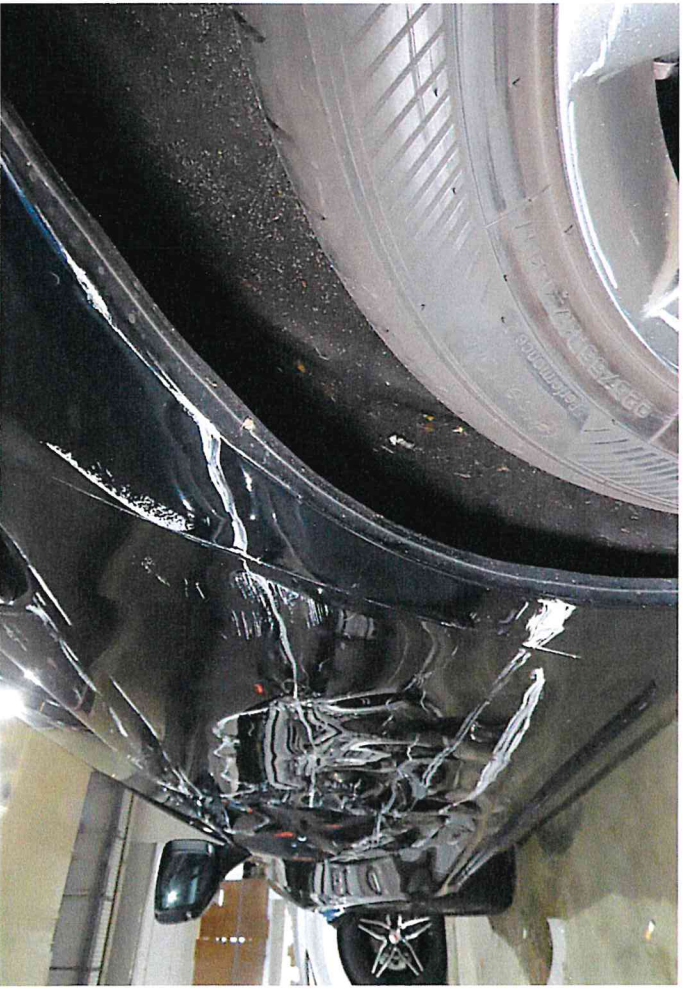
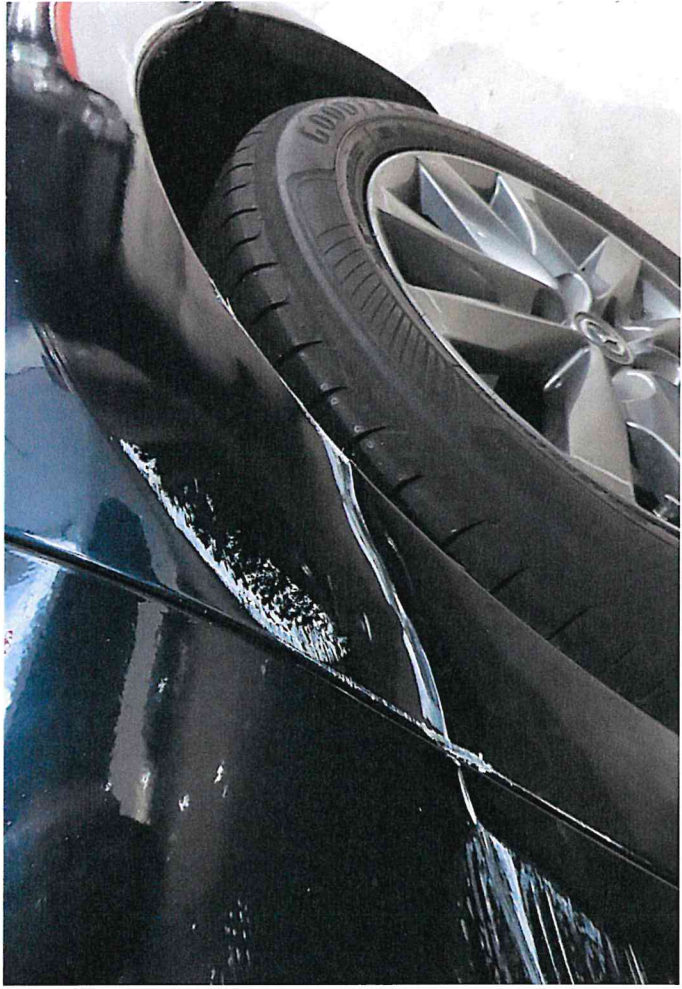
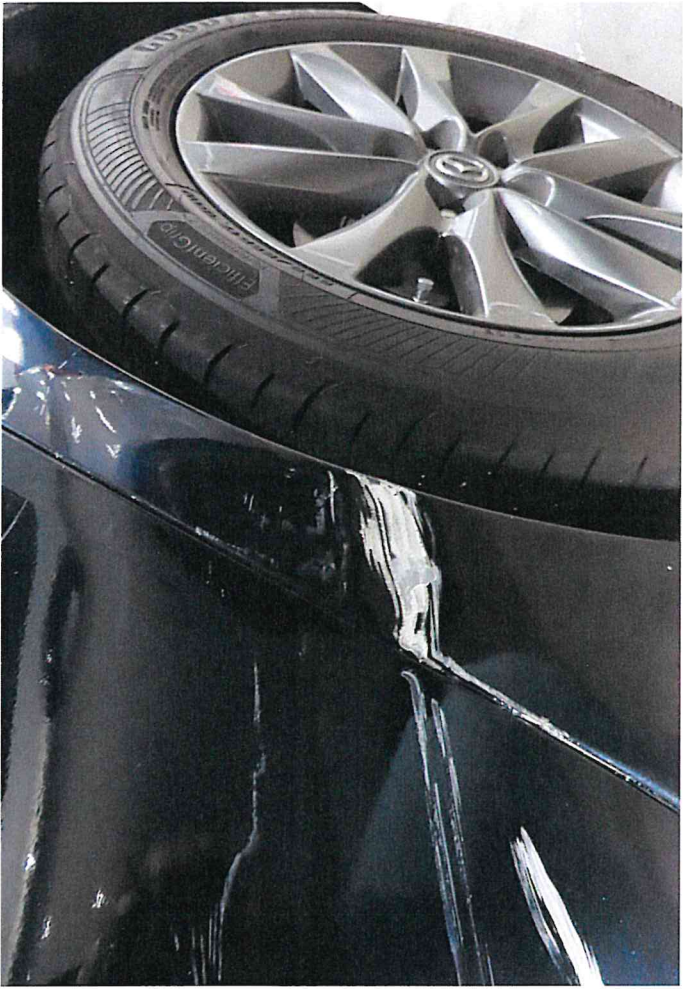


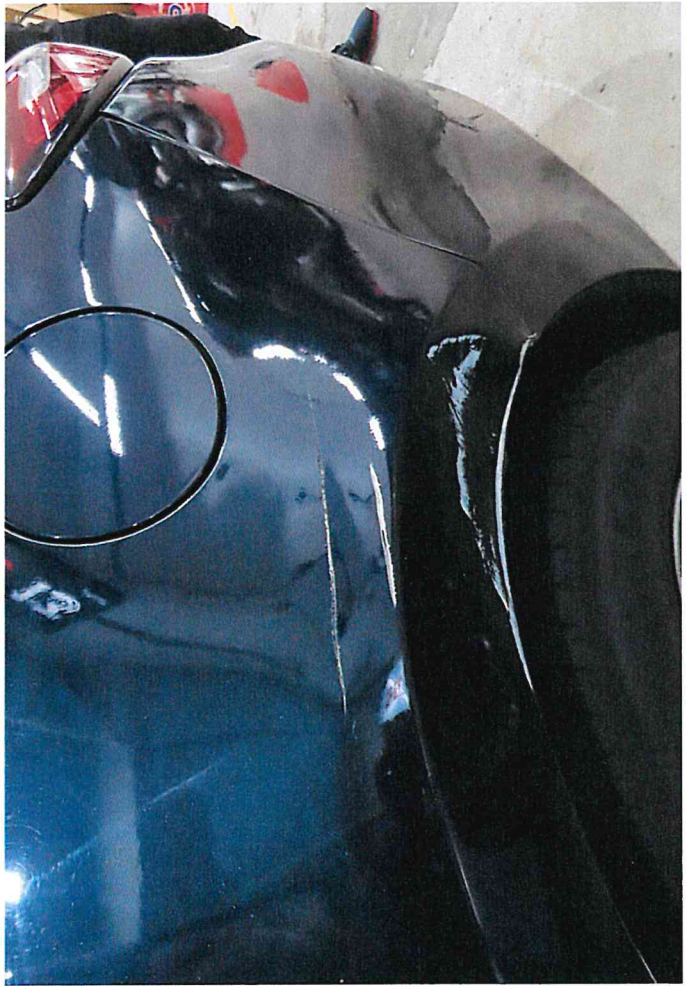
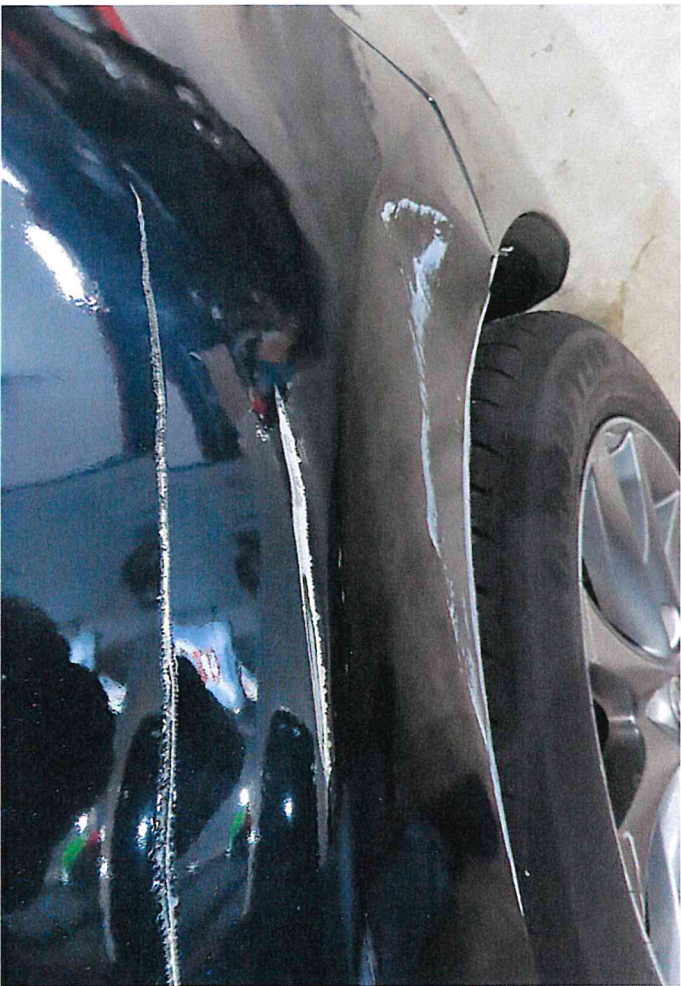
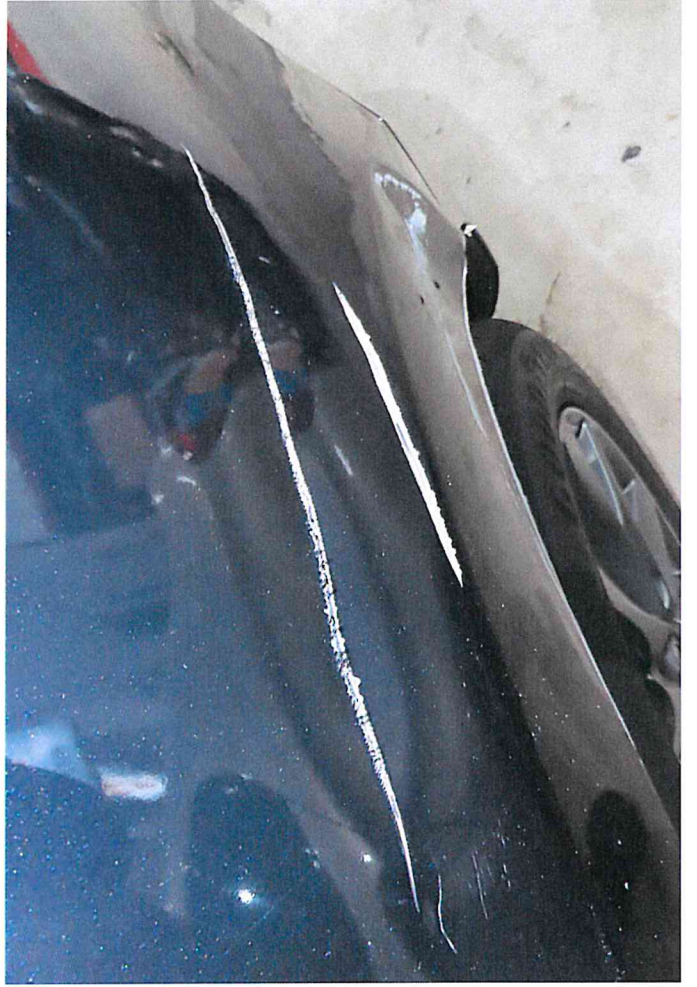
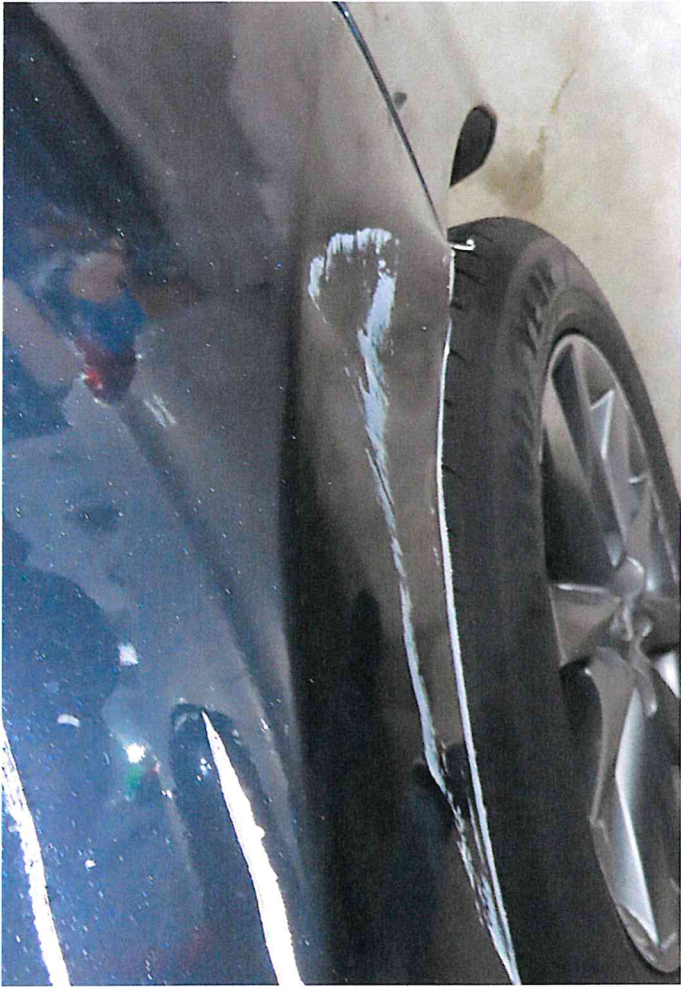


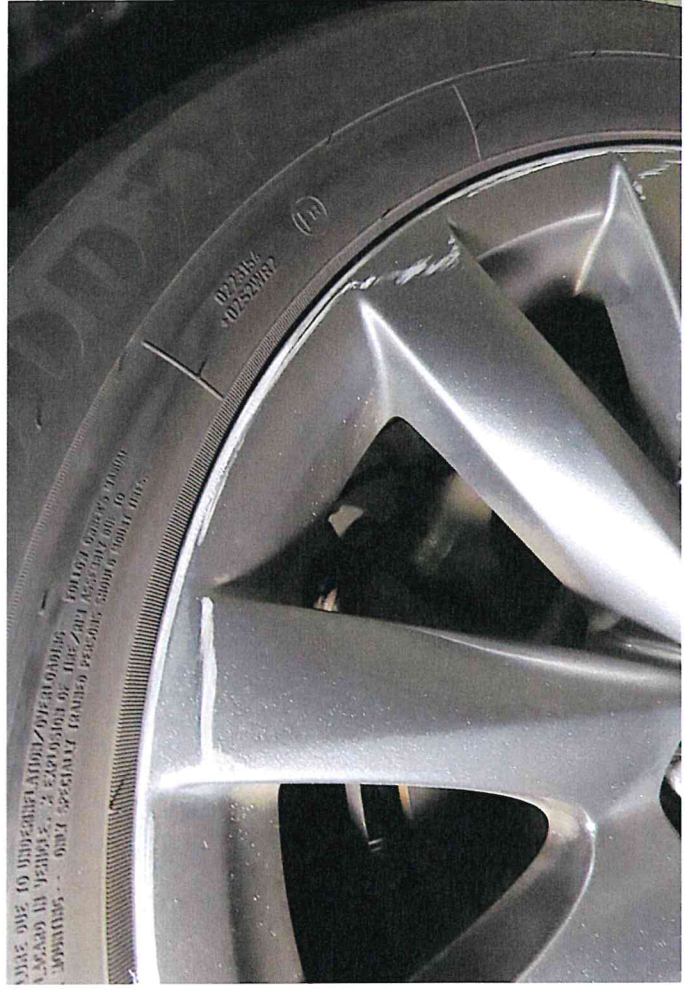


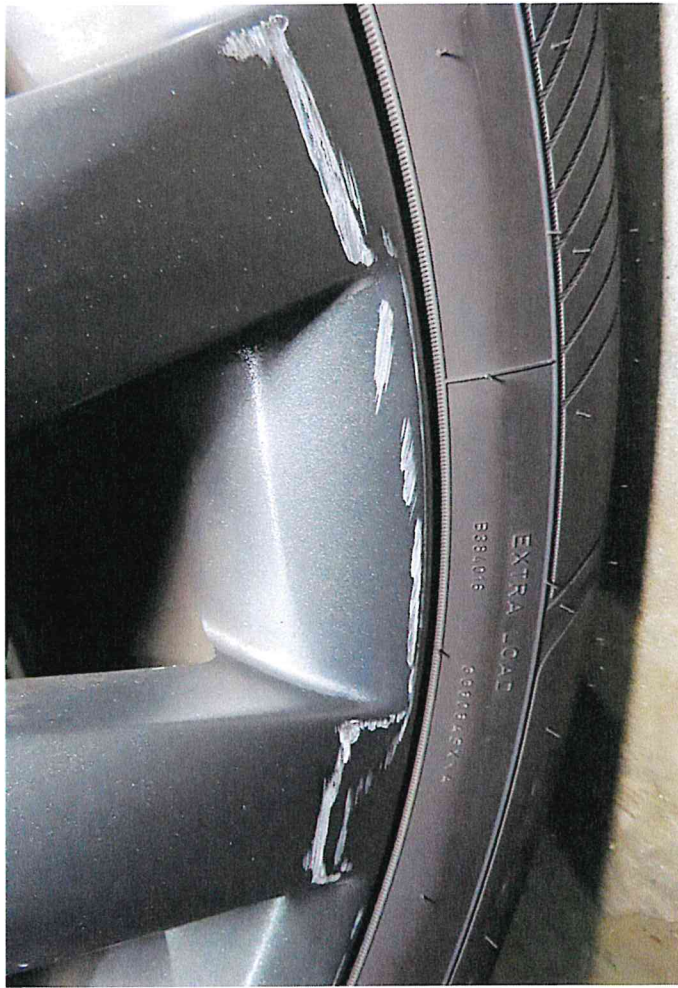
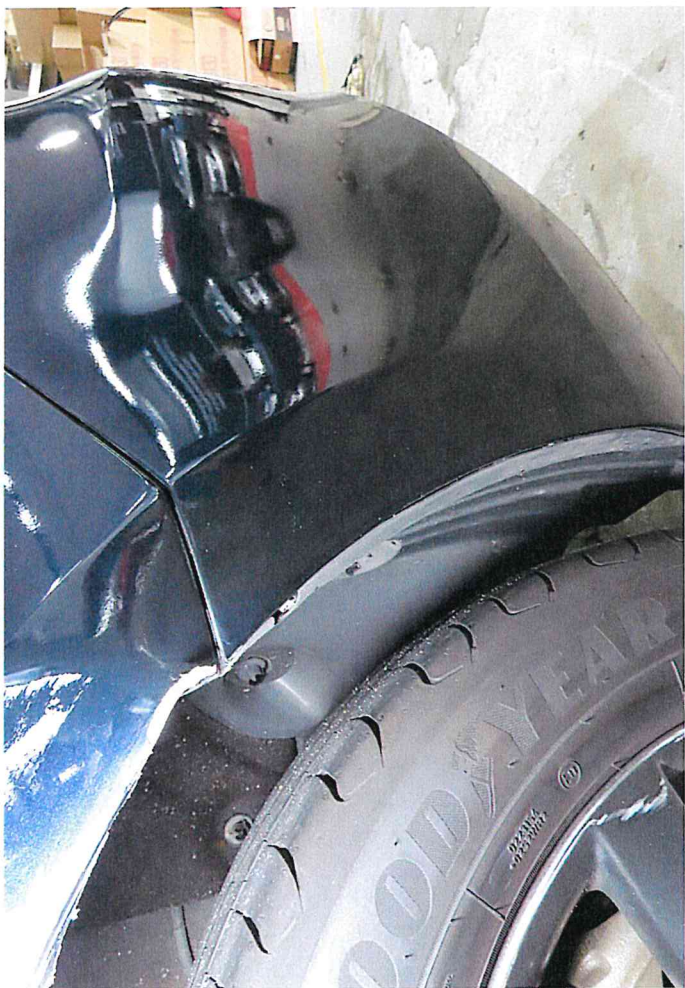


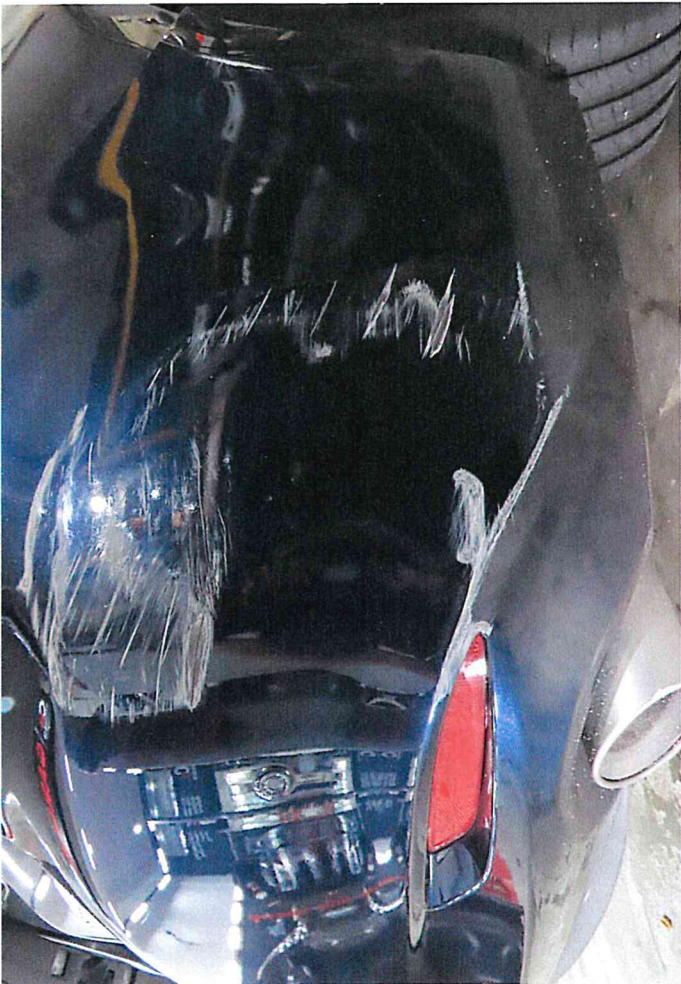
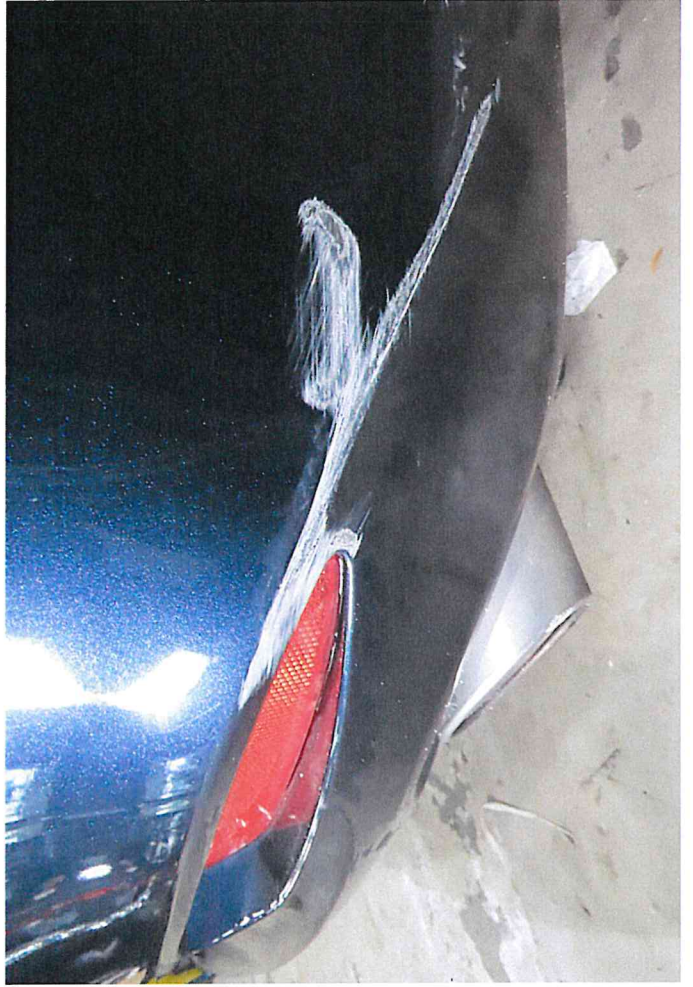


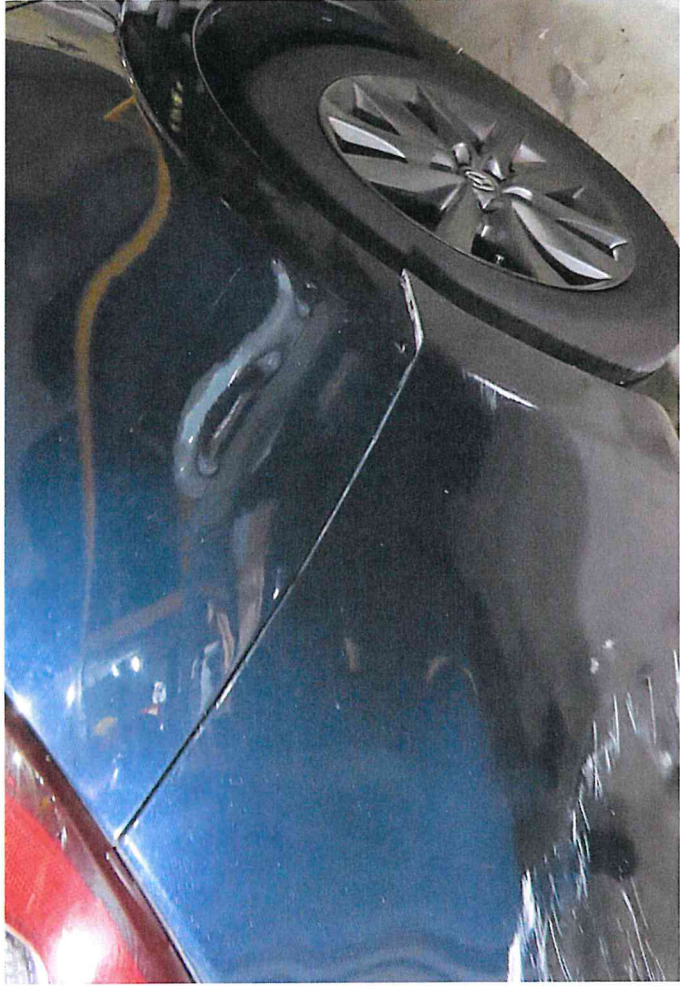
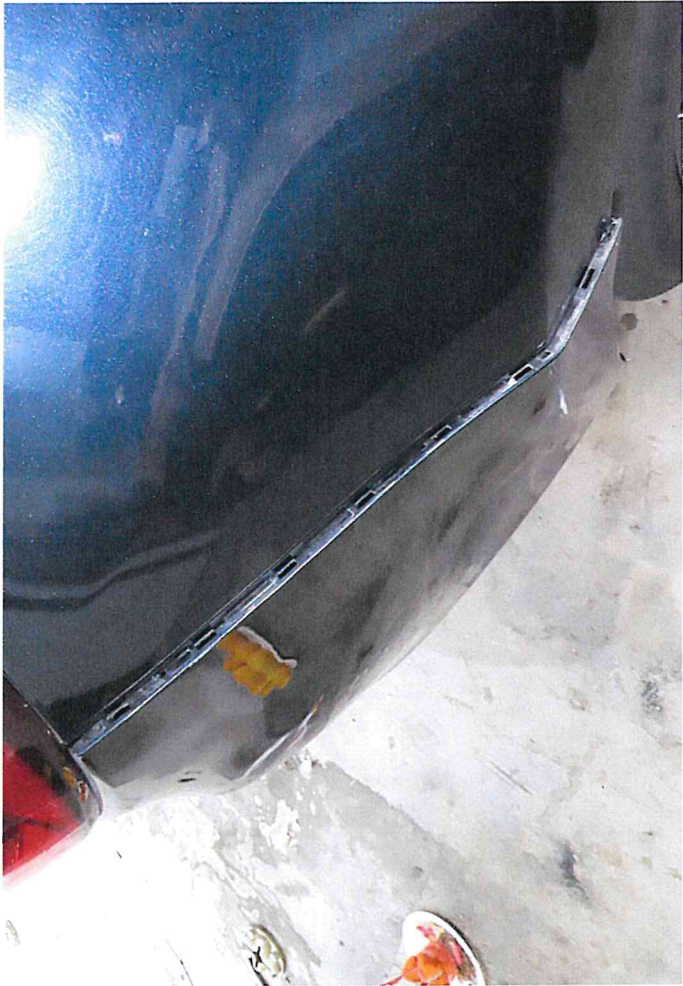


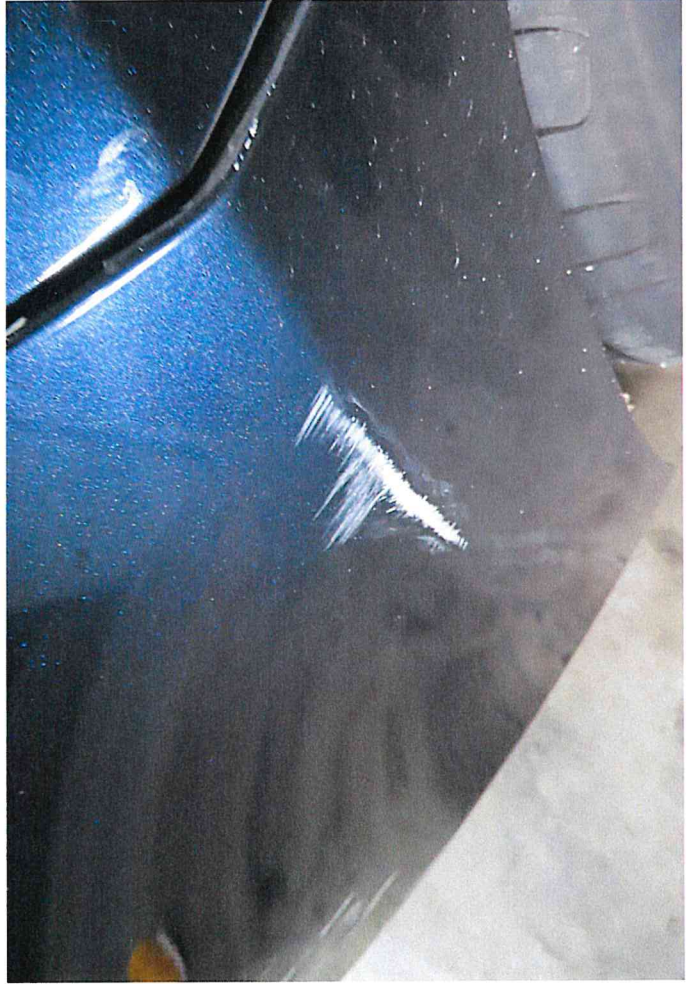
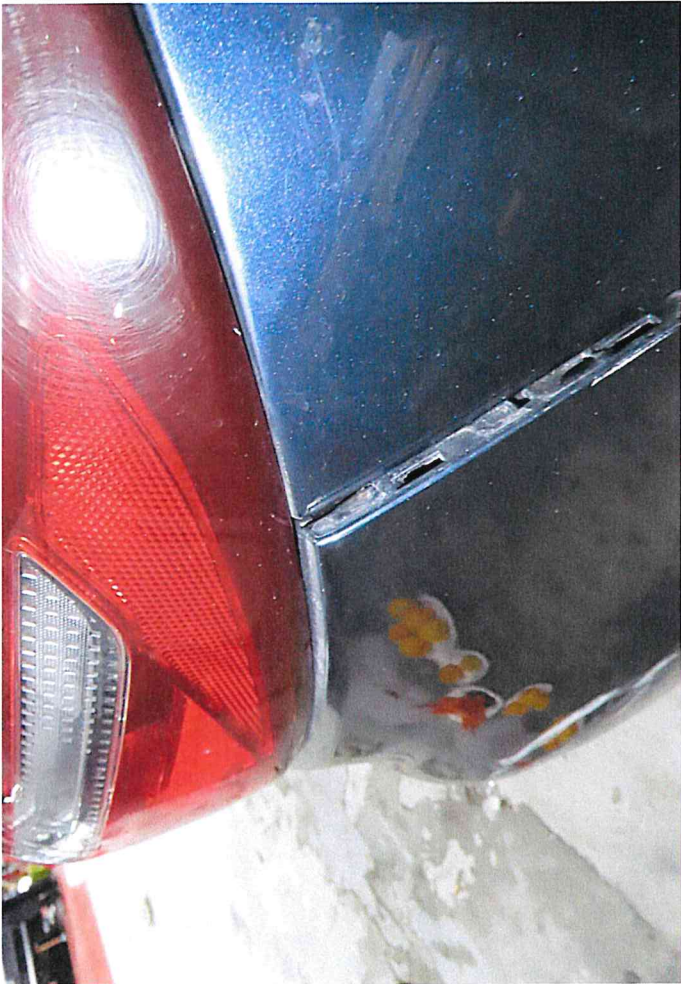
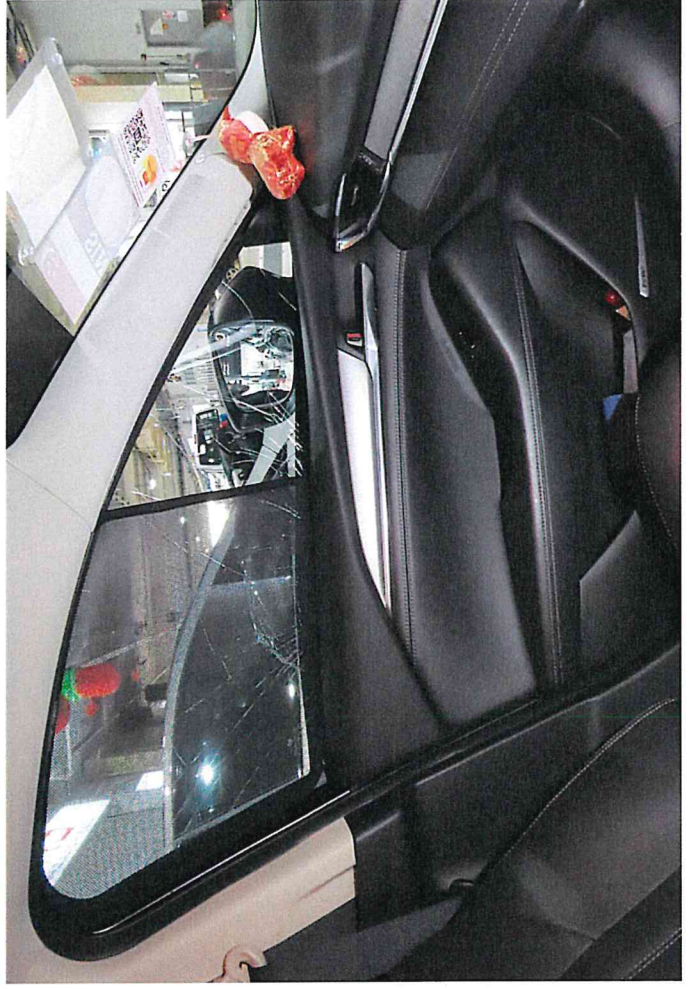


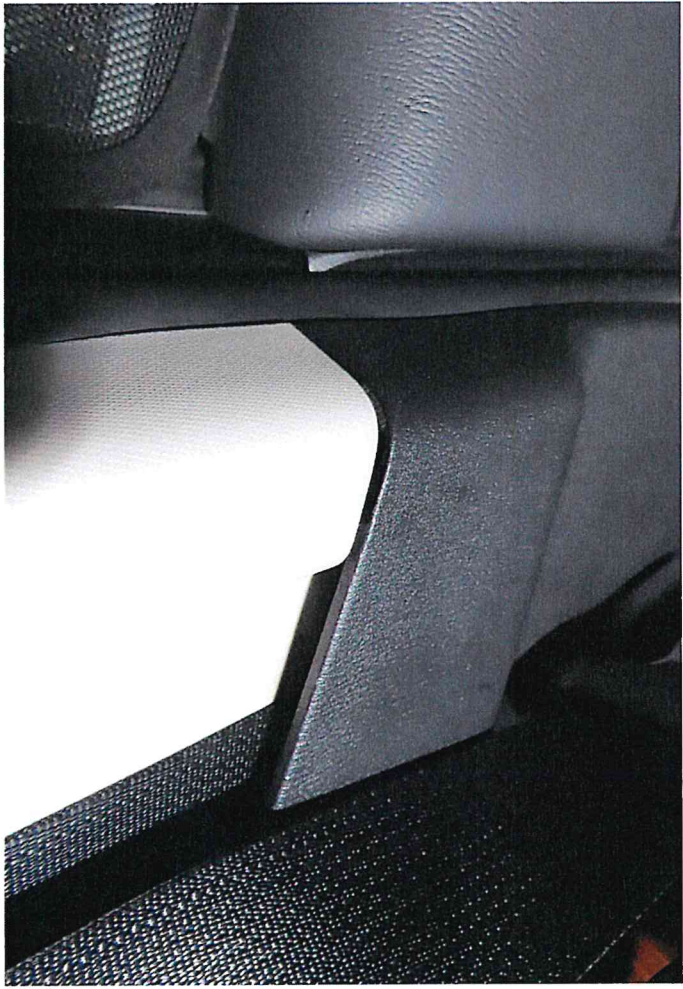
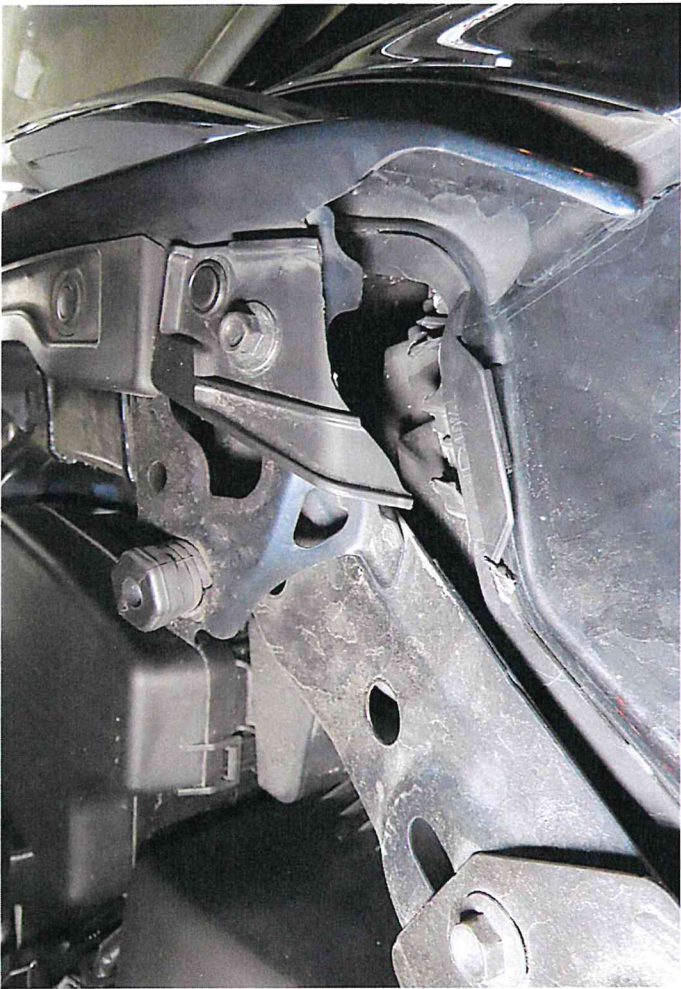


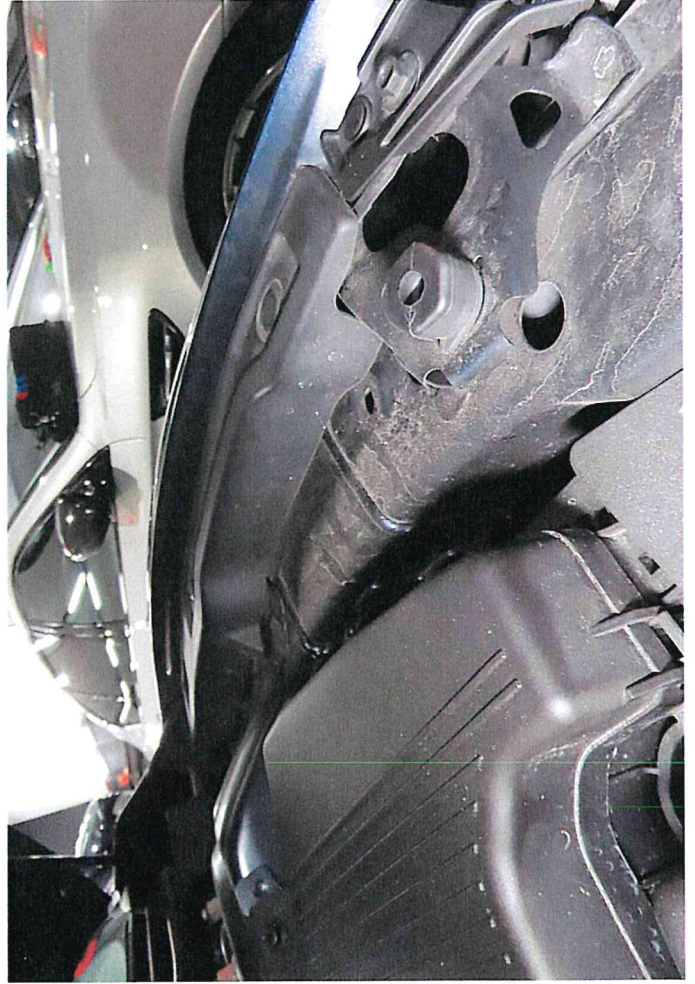


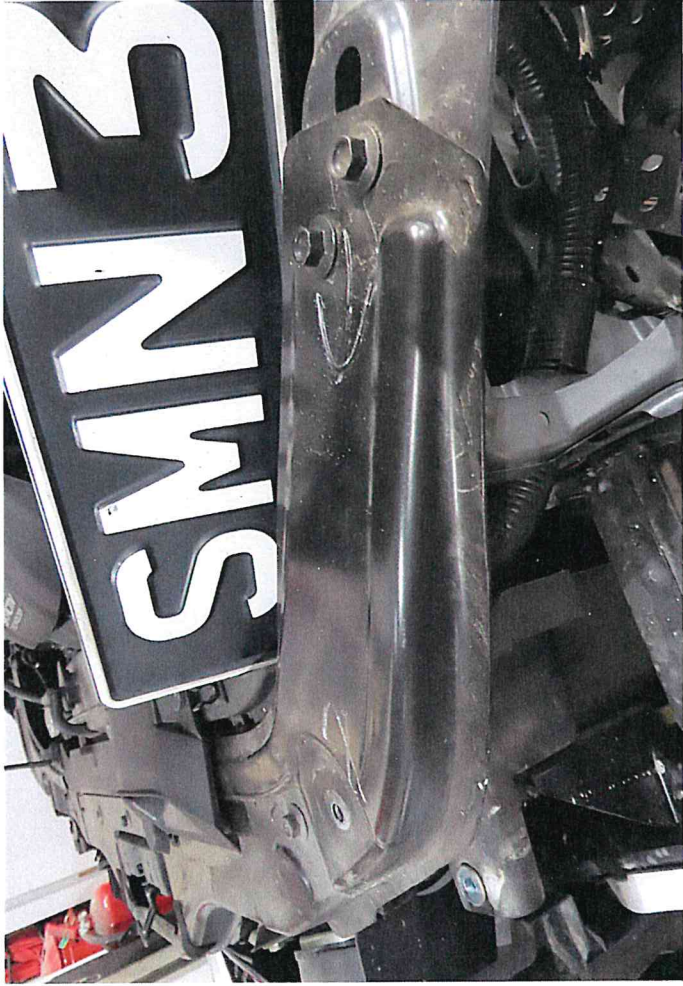


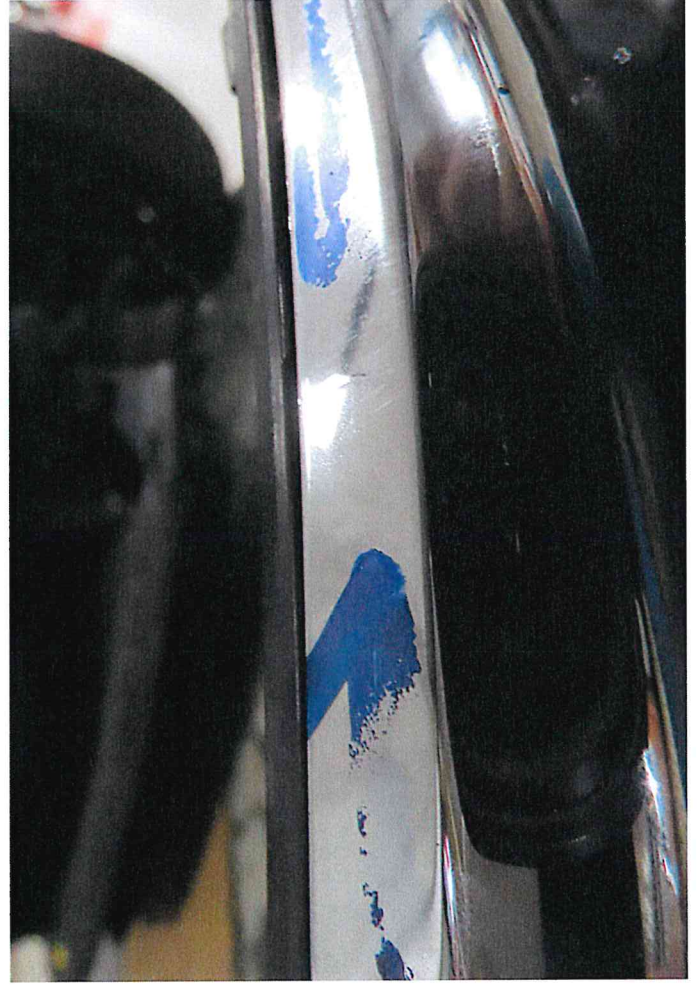
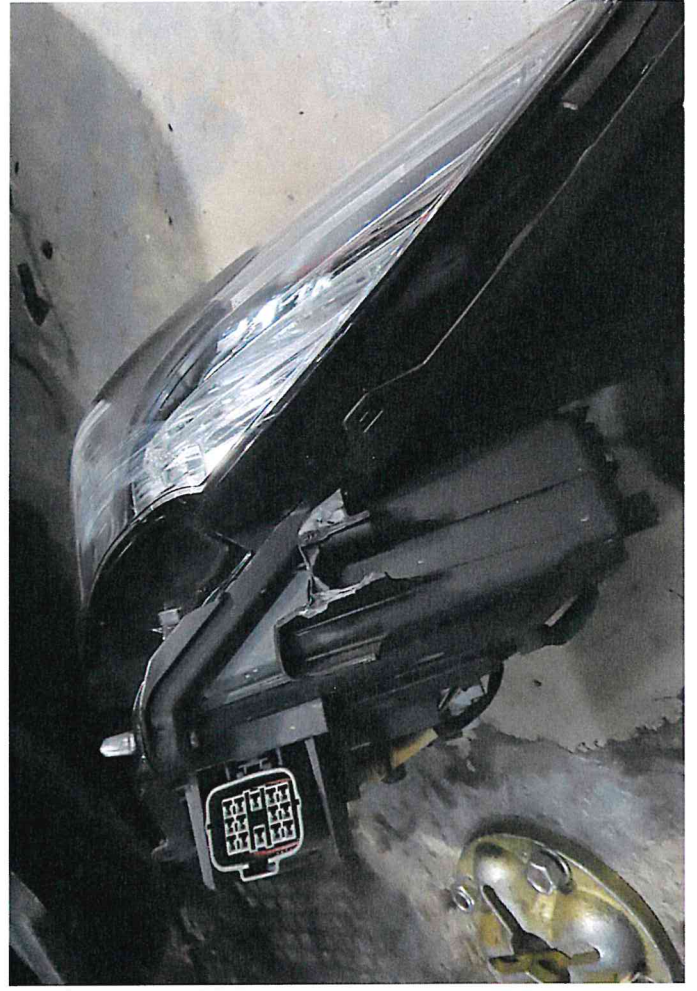




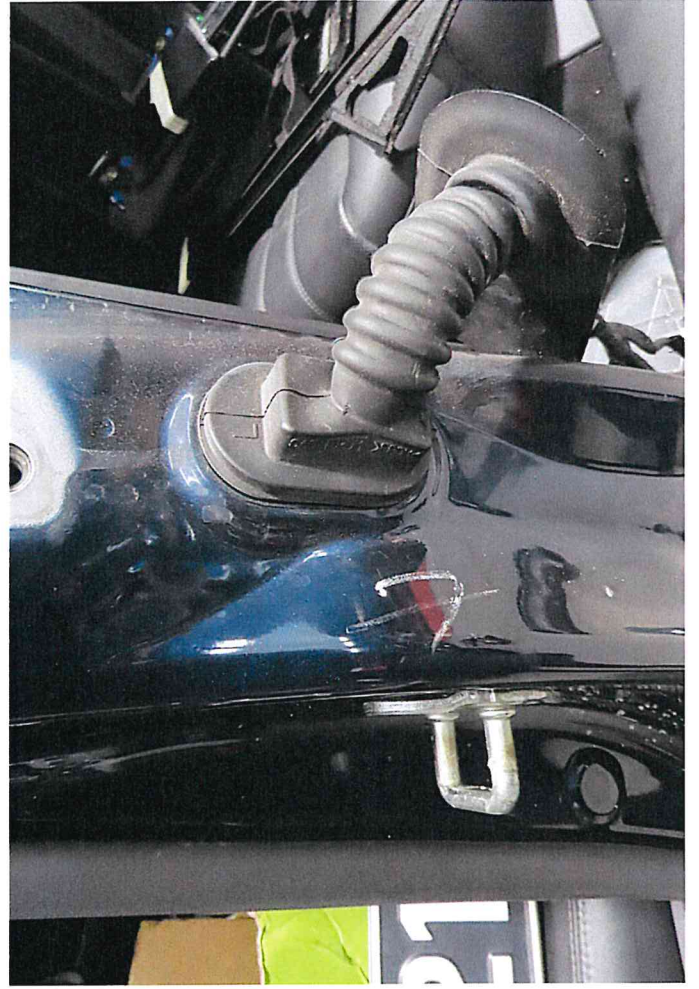


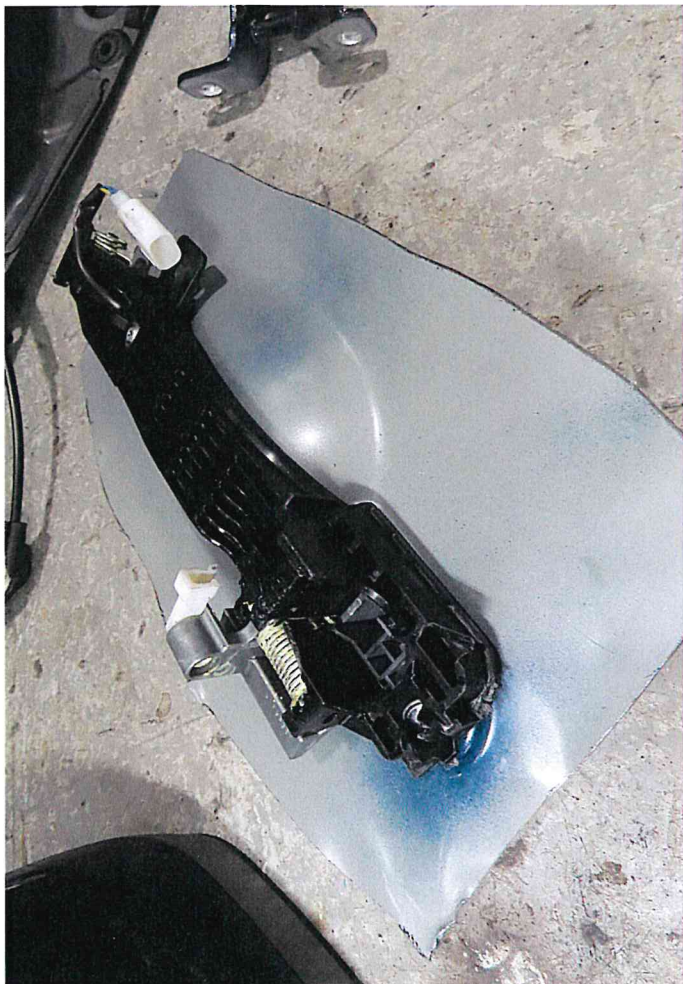




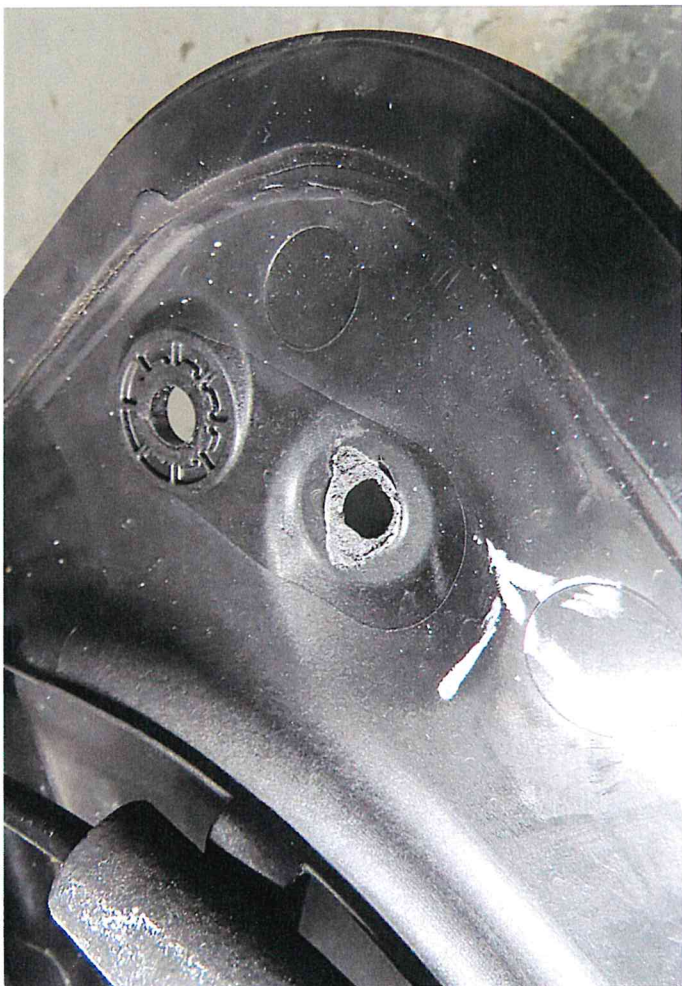
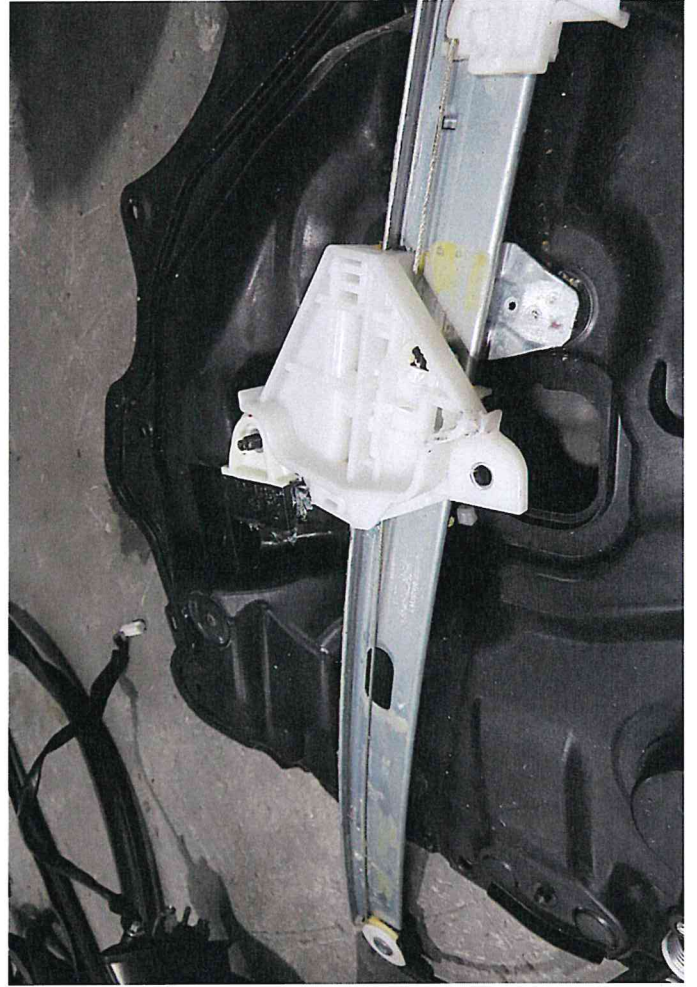


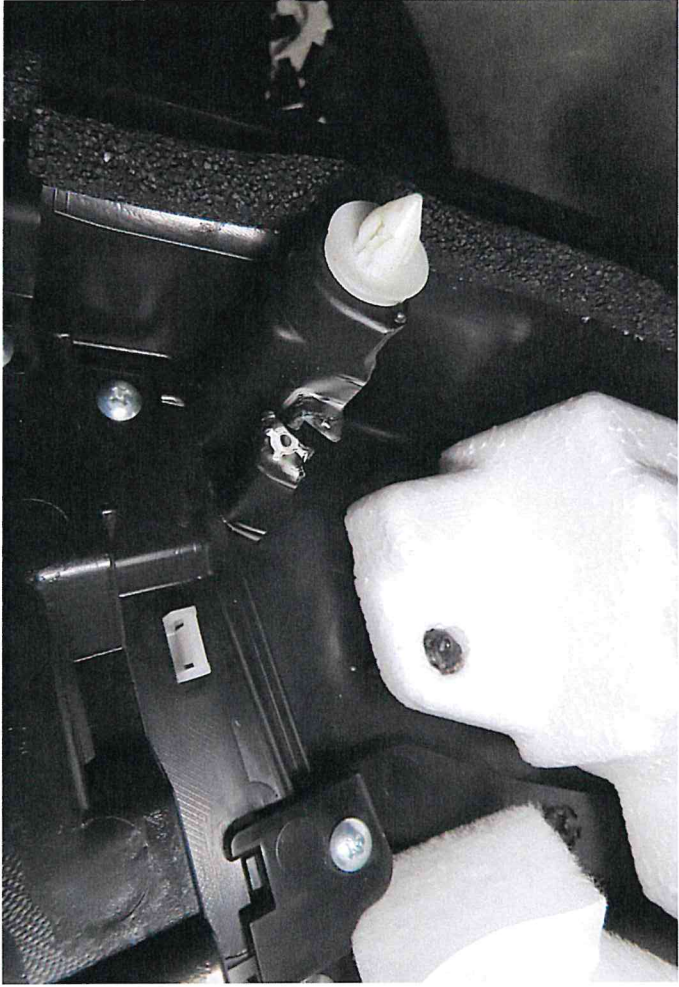


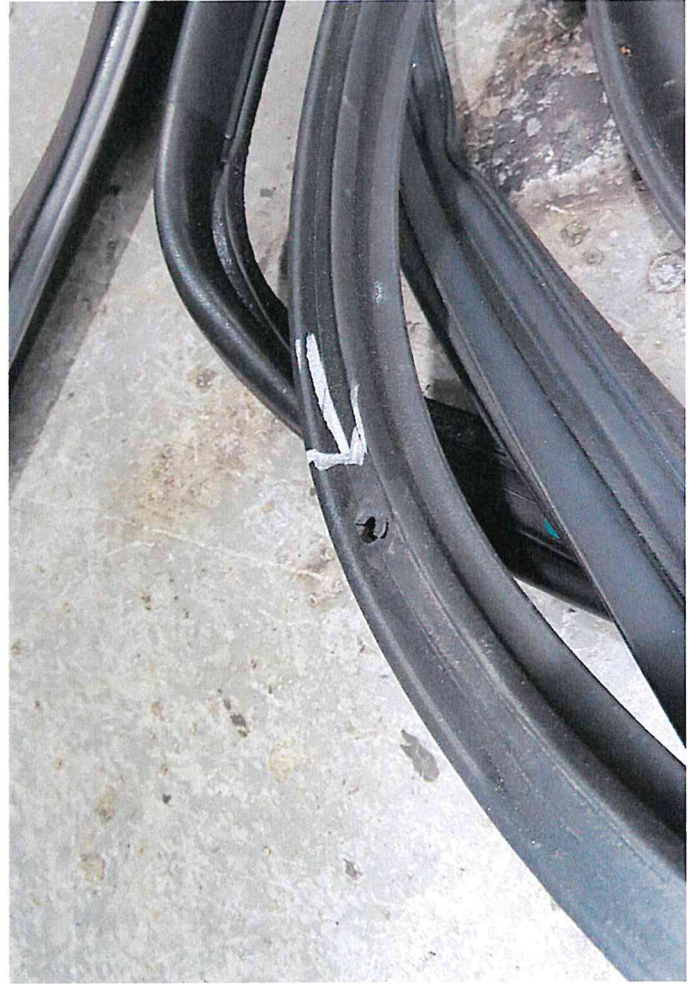




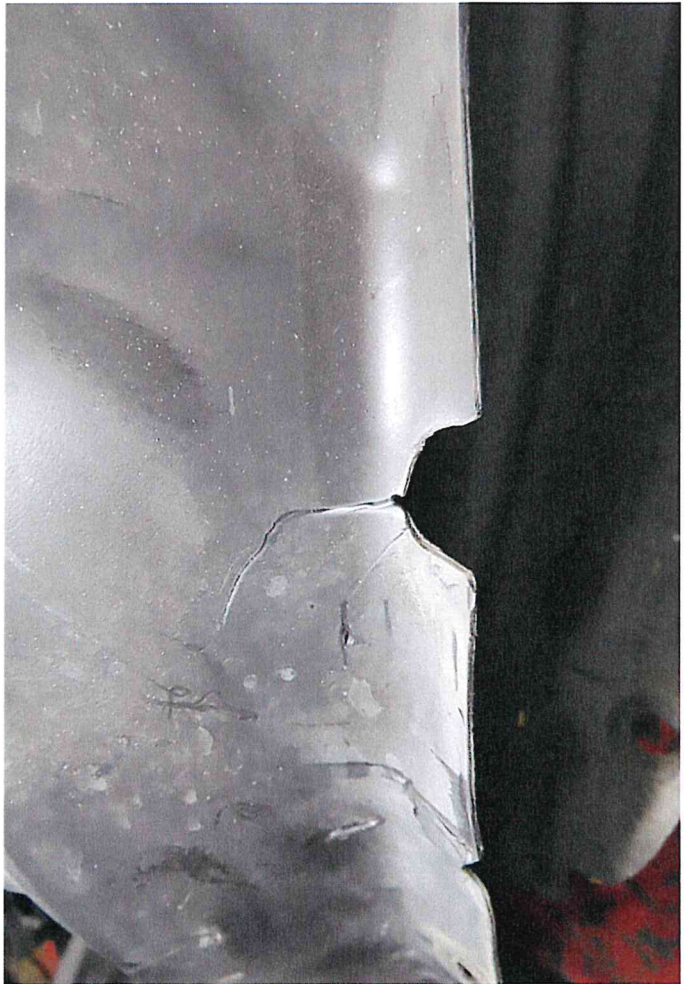
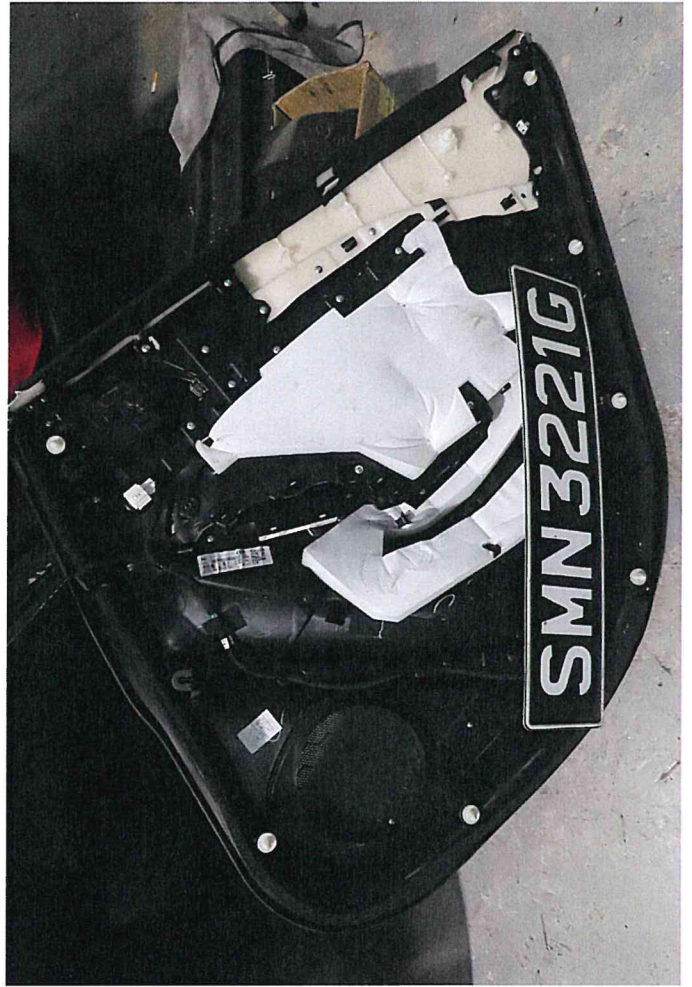


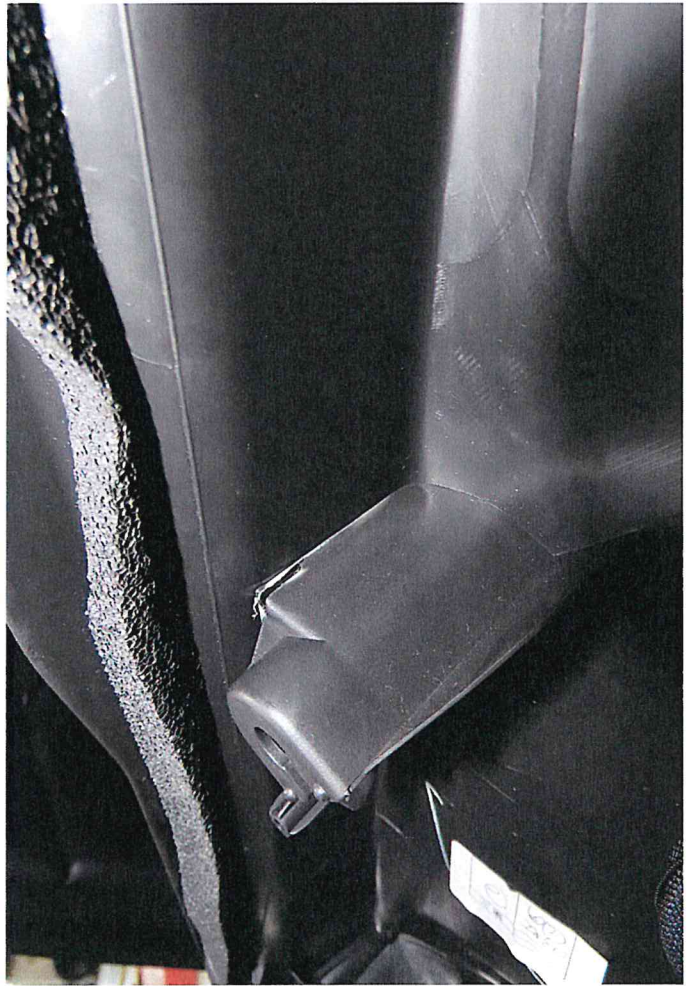
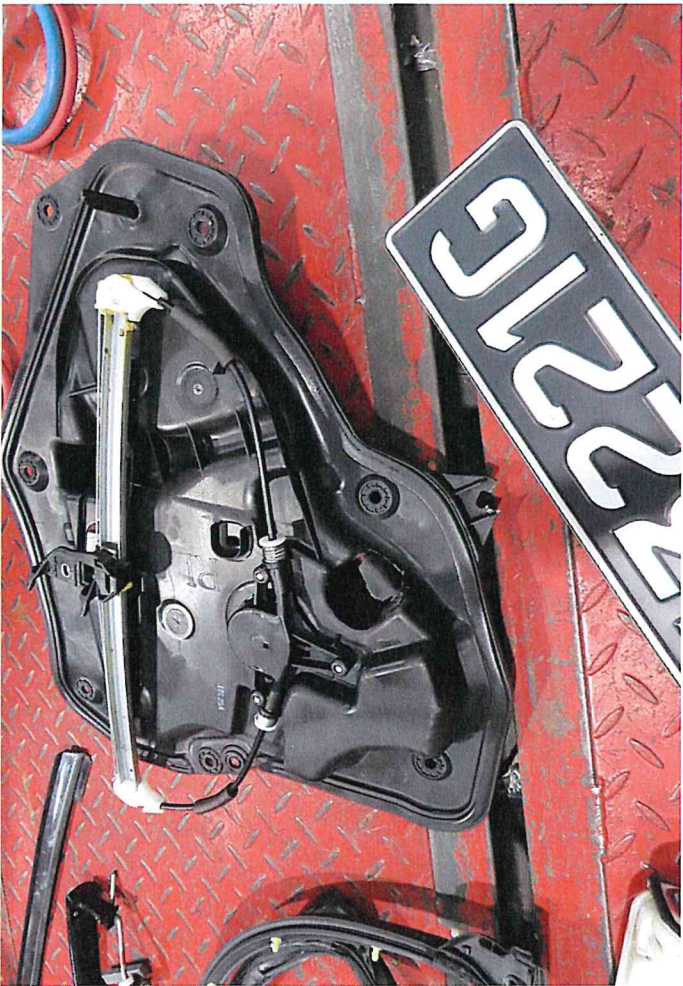
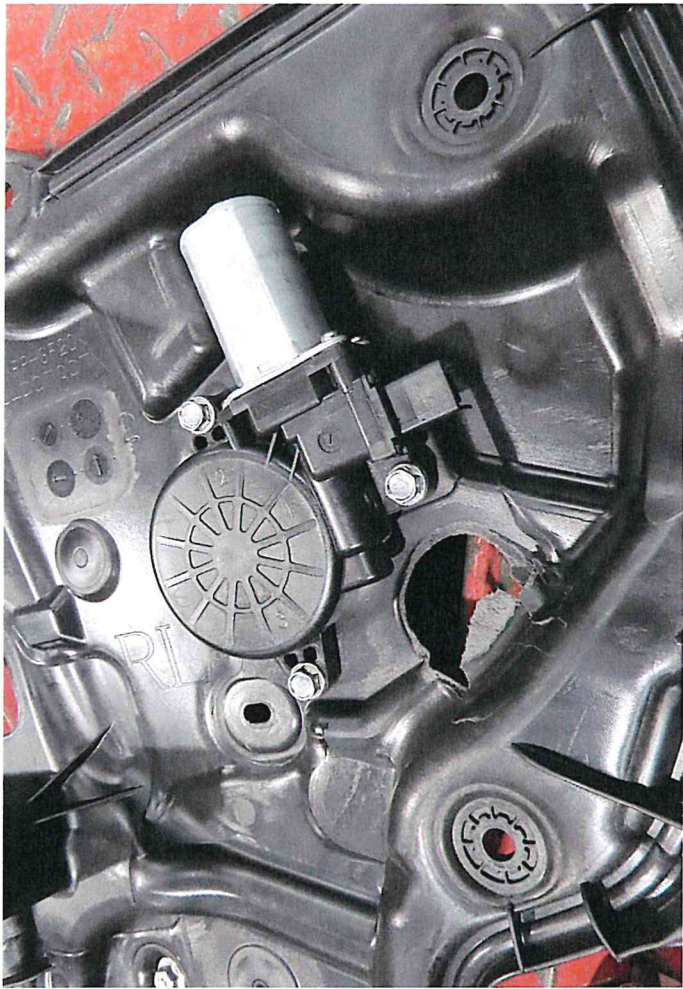


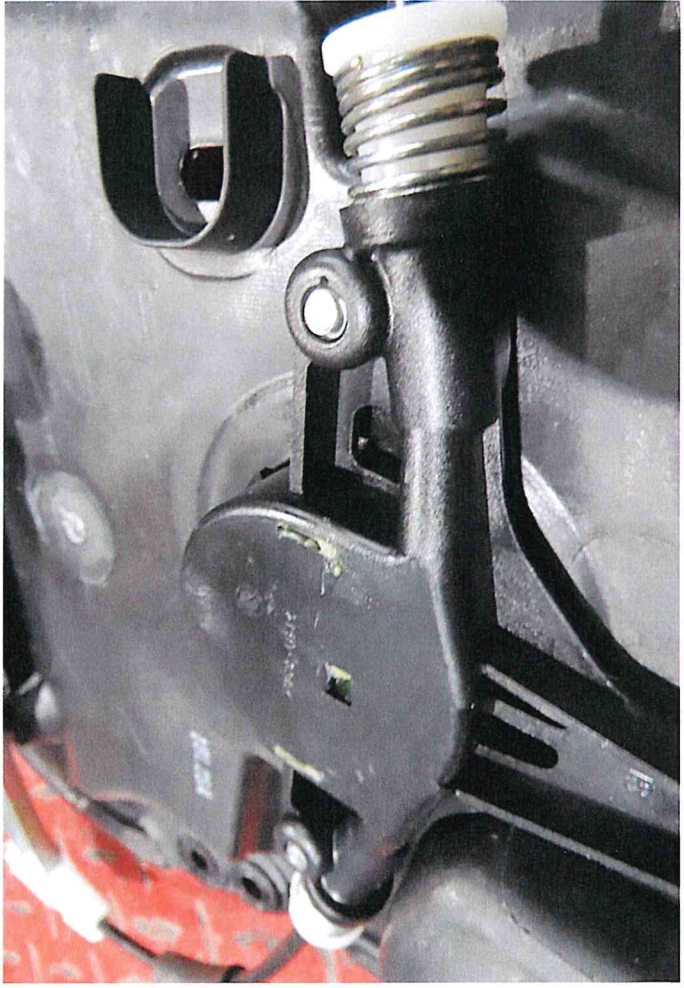
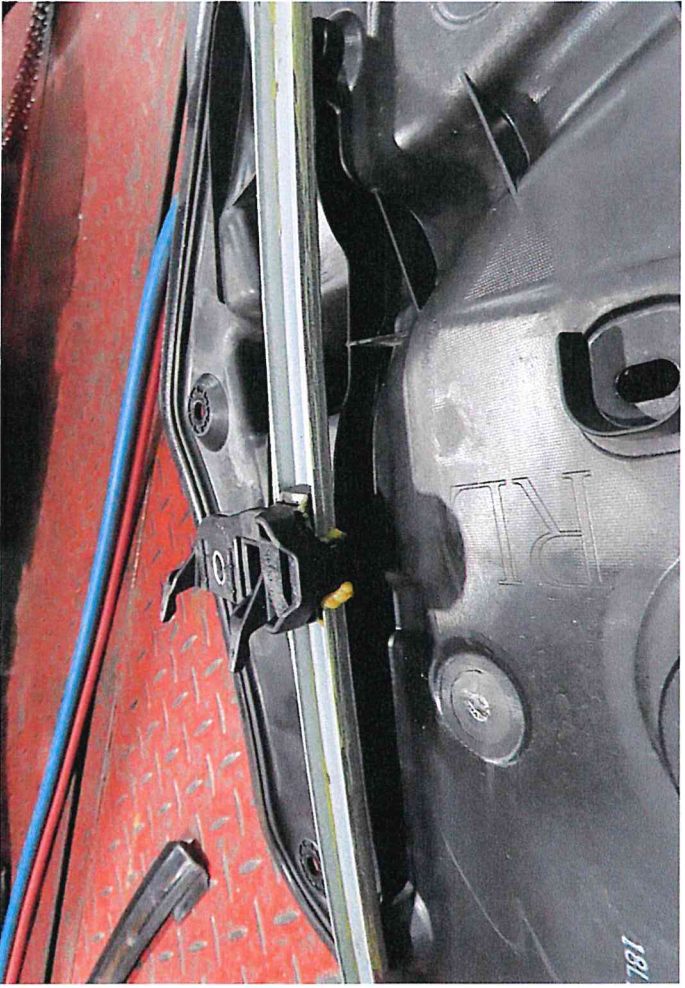
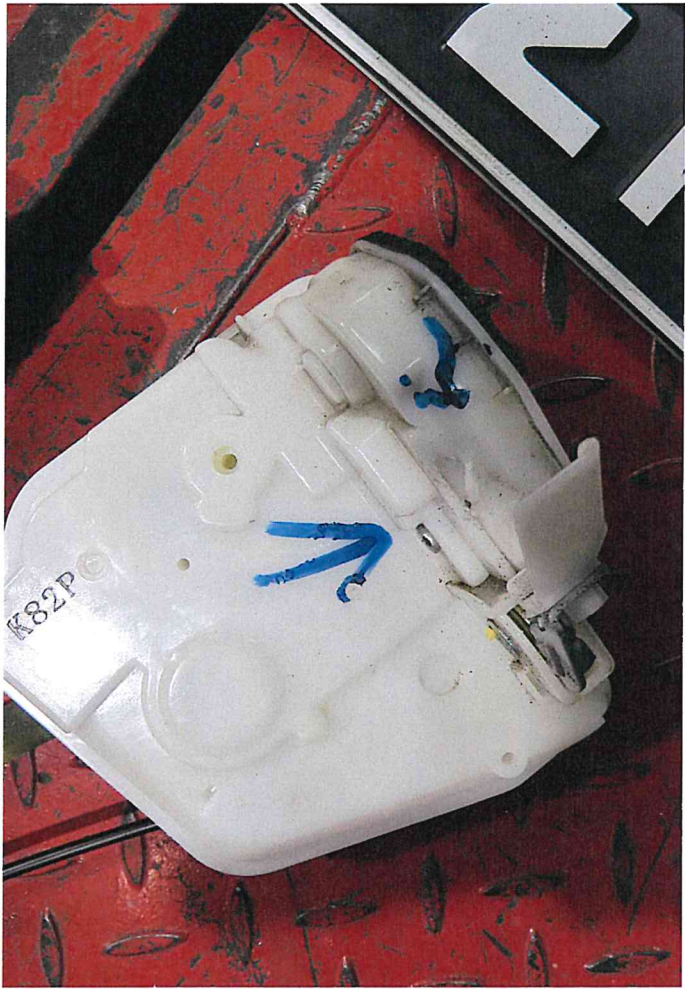


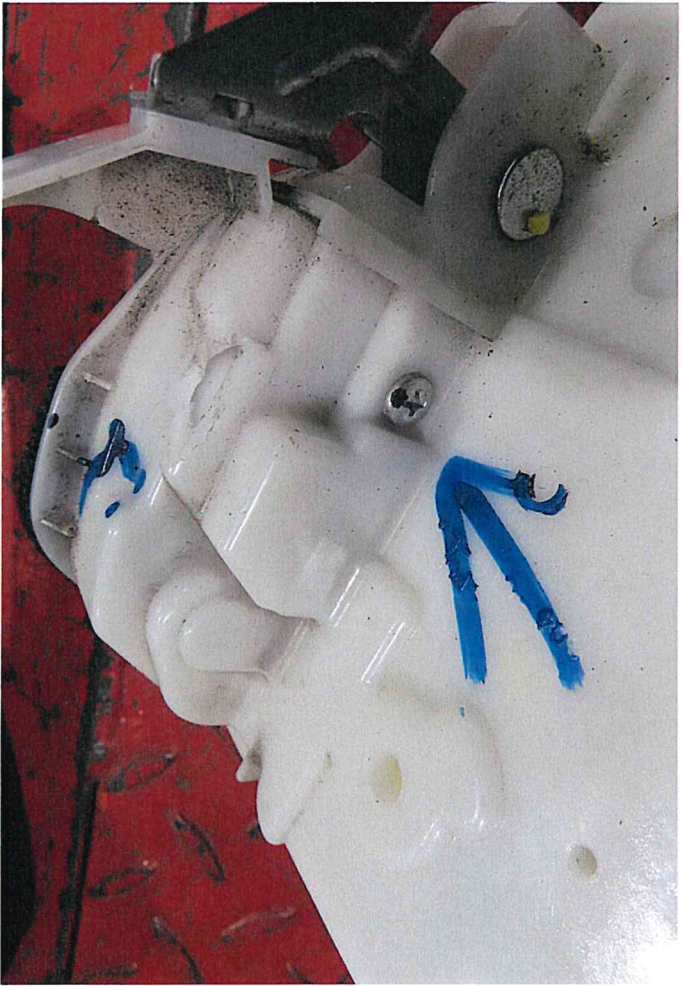
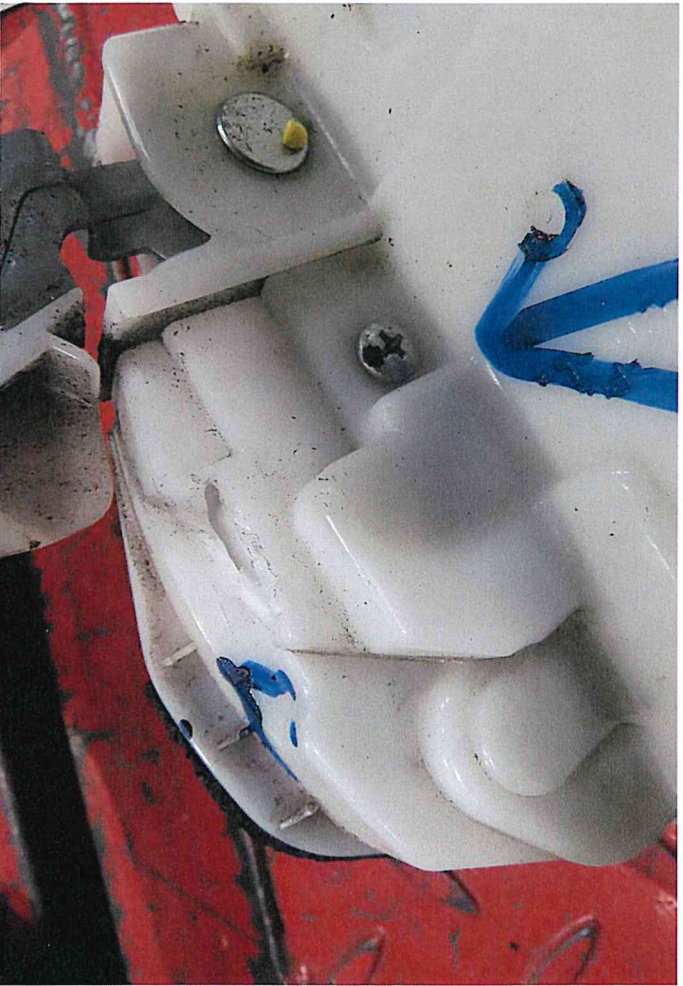


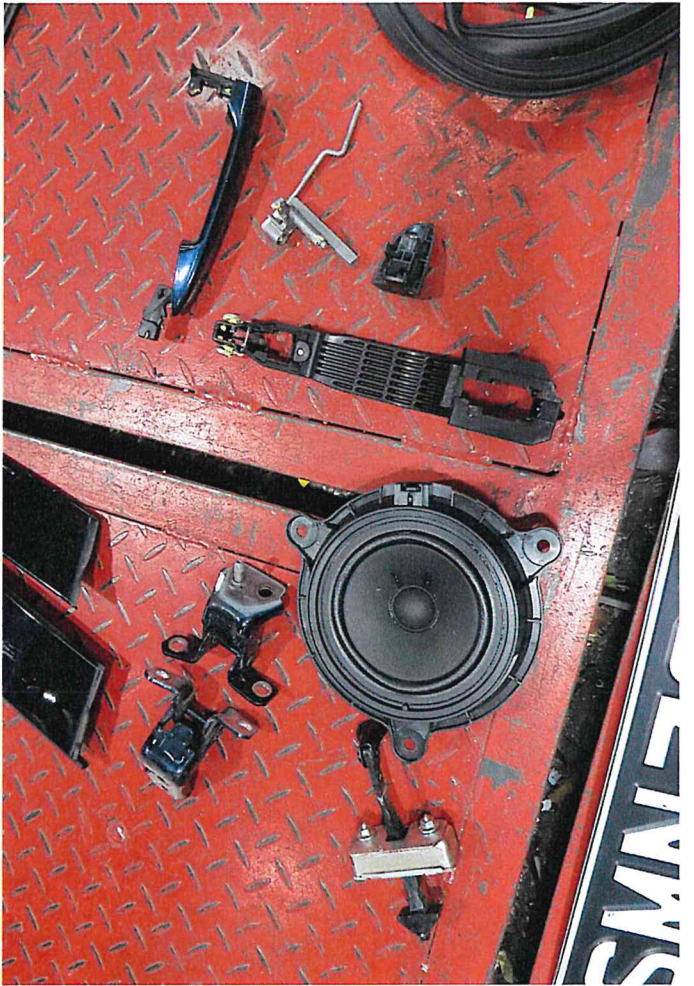
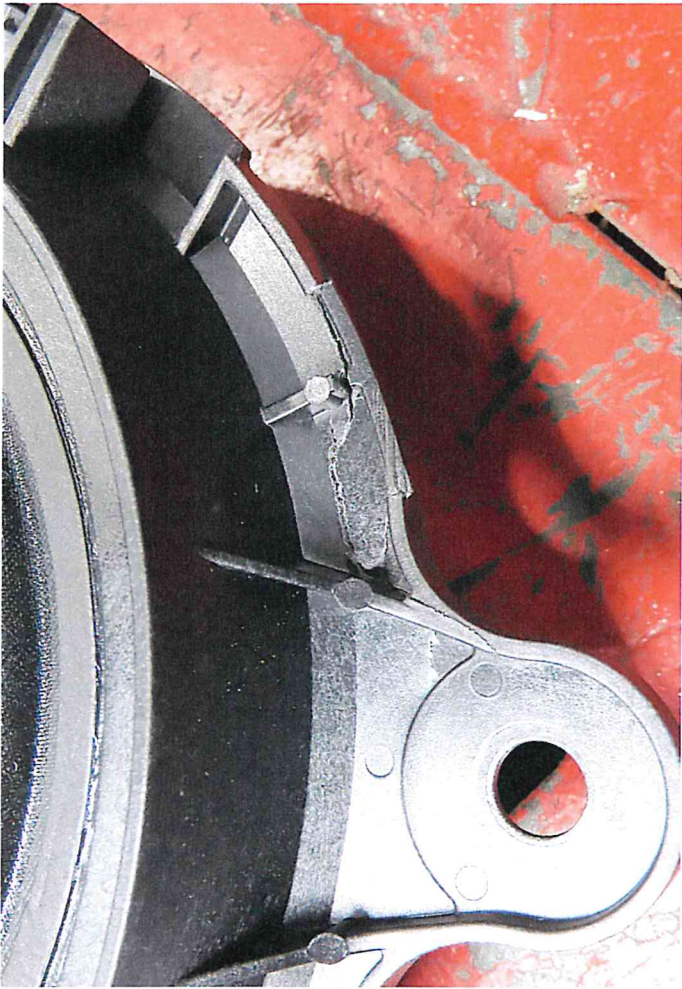




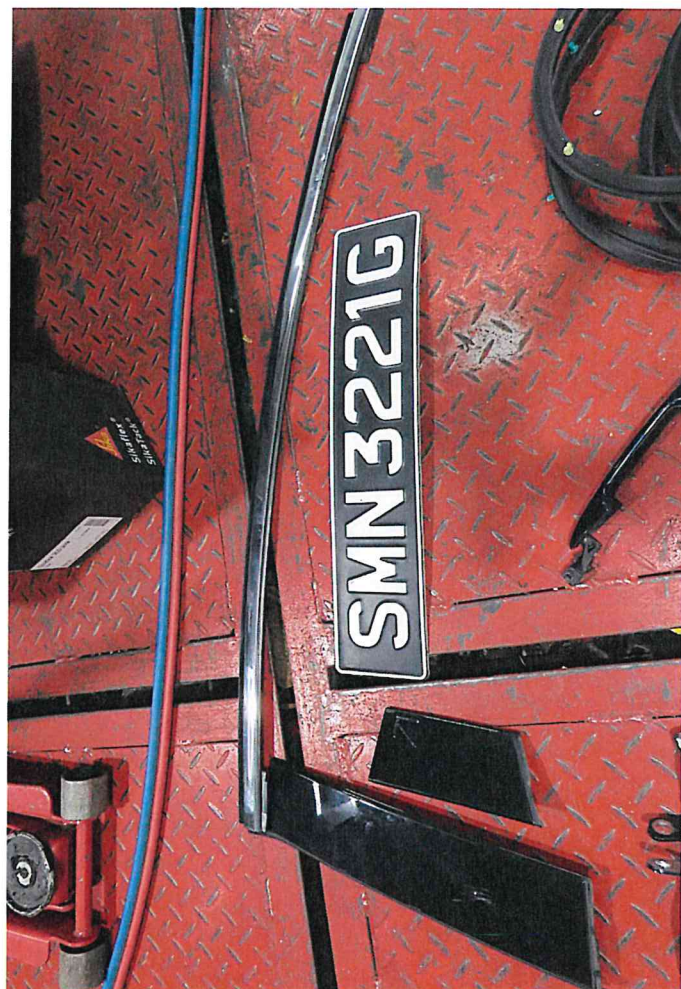




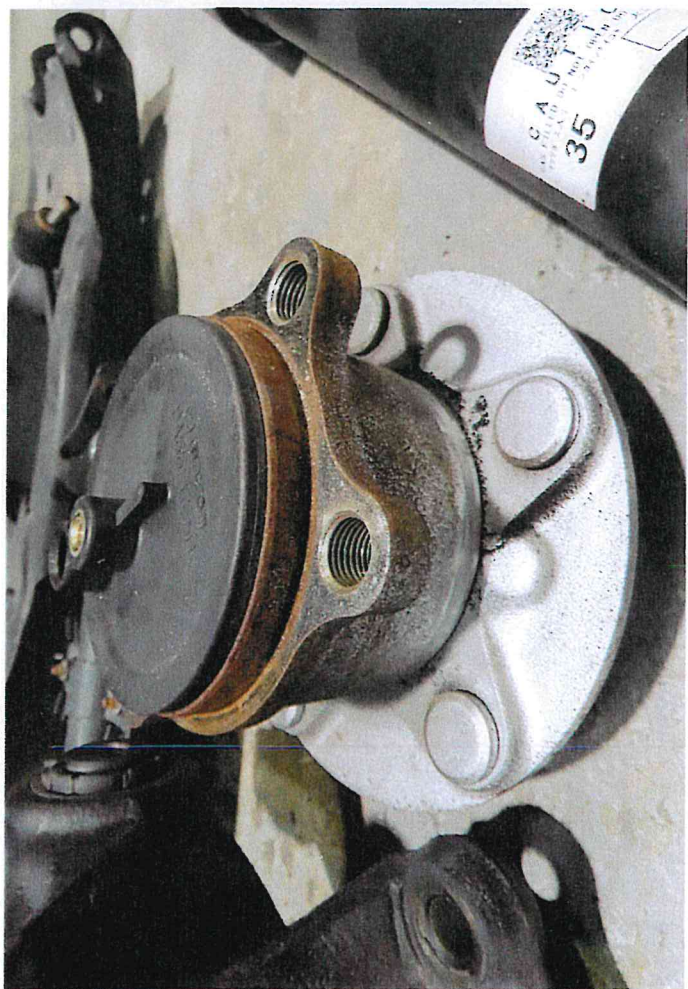












SMN3221G

