



# LKK Auto Consultants Pte Ltd

51 Ubi Ave 1 #01-25 Paya Ubi Industrial Park, Singapore 408933

TEL: 6256 3561 FAX: 6256 4315

Reg. No: 199607198R GST Reg. No. 19-9607198-R

PHOTOGRAPHS FOR VEHICLE NO. SKP 3560R

INSPECTION





# LKK Auto Consultants Pte Ltd

51 Ubi Ave 1 #01-25 Paya Ubi Industrial Park, Singapore 408933

TEL: 6256 3561 FAX: 6256 4315

Reg. No: 199607198R GST Reg. No. 19-9607198-R





# LKK Auto Consultants Pte Ltd

51 Ubi Ave 1 #01-25 Paya Ubi Industrial Park, Singapore 408933

TEL: 6256 3561 FAX: 6256 4315

Reg. No: 199607198R GST Reg. No. 19-9607198-R





# LKK Auto Consultants Pte Ltd

51 Ubi Ave 1 #01-25 Paya Ubi Industrial Park, Singapore 408933

TEL: 6256 3561 FAX: 6256 4315

Reg. No: 199607198R GST Reg. No. 19-9607198-R





# LKK Auto Consultants Pte Ltd

51 Ubi Ave 1 #01-25 Paya Ubi Industrial Park, Singapore 408933

TEL: 6256 3561 FAX: 6256 4315

Reg. No: 199607198R GST Reg. No. 19-9607198-R





# LKK Auto Consultants Pte Ltd

51 Ubi Ave 1 #01-25 Paya Ubi Industrial Park, Singapore 408933

TEL: 6256 3561 FAX: 6256 4315

Reg. No: 199607198R GST Reg. No. 19-9607198-R





# LKK Auto Consultants Pte Ltd

51 Ubi Ave 1 #01-25 Paya Ubi Industrial Park, Singapore 408933

TEL: 6256 3561 FAX: 6256 4315

Reg. No: 199607198R GST Reg. No. 19-9607198-R





## LKK Auto Consultants Pte Ltd

51 Ubi Ave 1 #01-25 Paya Ubi Industrial Park, Singapore 408933

TEL: 6256 3561 FAX: 6256 4315

Reg. No: 199607198R GST Reg. No. 19-9607198-R







# LKK Auto Consultants Pte Ltd

51 Ubi Ave 1 #01-25 Paya Ubi Industrial Park, Singapore 408933

TEL: 6256 3561 FAX: 6256 4315

Reg. No: 199607198R GST Reg. No. 19-9607198-R





# LKK Auto Consultants Pte Ltd

51 Ubi Ave 1 #01-25 Paya Ubi Industrial Park, Singapore 408933

TEL: 6256 3561 FAX: 6256 4315

Reg. No: 199607198R GST Reg. No. 19-9607198-R





## LKK Auto Consultants Pte Ltd

51 Ubi Ave 1 #01-25 Paya Ubi Industrial Park, Singapore 408933

TEL: 6256 3561 FAX: 6256 4315

Reg. No: 199607198R GST Reg. No. 19-9607198-R



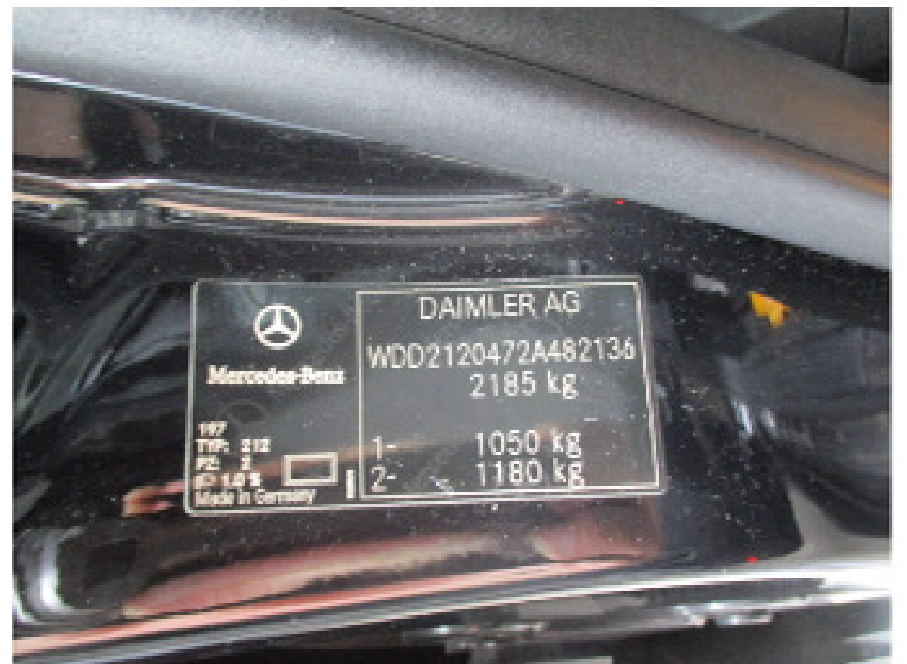


# LKK Auto Consultants Pte Ltd

51 Ubi Ave 1 #01-25 Paya Ubi Industrial Park, Singapore 408933

TEL: 6256 3561 FAX: 6256 4315

Reg. No: 199607198R GST Reg. No. 19-9607198-R



Mercedes-Benz		DAIMLER AG	
WDD2120472A482136		2185 kg	
197	1- 1050 kg		
TYP. 312	2- 1180 kg		
PZ. 2			
100 1.8 18			
Made in Germany			