



## LKK Auto Consultants Pte Ltd

51 Ubi Ave 1 #01-25 Paya Ubi Industrial Park, Singapore 408933

TEL: 6256 3561 FAX: 6256 4315

Reg. No: 199607198R GST Reg. No. 19-9607198-R

### Affiliated to Federation Internationale Des Experts En Automobile

SINGAPORE CIVIL DEFENCE FORCE

Ref : CS/SCD20009531/Qtf3e2

91 UBI AVE 4 SINGAPORE 408827

Date : 25-09-2020



ATTN : SHAUN LIM CHI TUCK

Code : SCD

#### 1. Policy Particulars :- OWN DAMAGE

Insured Veh.		Veh. Inspected	YN 4200T
Policy No.		Coverage (\$)	0.00
Claim No.	YN4200T25082020	Excess (\$)	0.00
Assign From	SHAUN LIM CHI TUCK	Assign Date	07/09/2020

#### 2. Vehicle Particulars & Condition

Make & Model	ISUZU	c.c	0
Engine No.	HIDDEN	Year of Reg.	
Chassis No.	NJR857030559	Colour	WHITE
Odometer	117917	Steering	IN ORDER
Brakes	IN ORDER	Modification	STANDARD ALLOY RIM
General	FAIR		

#### 3. Conditions of Tyres

	Size	Make	Balance
R/H Front Tyre	195/75 R15	YOKOHAMA	6 mm
L/H Front Tyre	195/75 R15	YOKOHAMA	6 mm
R/H Rear Tyre	195/75 R15	YOKOHAMA	6 mm
L/H Rear Tyre	195/75 R15	YOKOHAMA	6 mm

#### 4. Description of Damages

THE VEHICLE SUSTAINED DAMAGES AT THE ROOFTOP. DAMAGES SEE DETAILS.
---

#### 5. General Information

Accident Date	25/08/2020	Inspection Date	08/09/2020
Survey held at	SMRT AUTOMOTIVE SERVICES PTE LTD 60 WOODLANDS INDUSTRIAL PARK E4 SINGAPORE 757705		

#### 5a. Remarks

--



Auto  
Consultants  
Pte Ltd

Company Registration No. 199607198R

51 UBI AVE 1, #02-25 PAYA UBI INDUSTRIAL PARK, SINGAPORE 408933 TEL : (065) 62563561 FAX : (065) 62564315

Registration No.YN 4200T

S/N	ITEM DESCRIPTION	PARTS				MAN-HOUR QTY
		PARTS QTY	Condition	PARTS COST PER UNIT (\$) AFTER MARK UP	TOTAL PARTS COST (\$) AFTER MARK UP	
<b>1</b>	<b>MATERIALS</b>					
<b>2</b>	<b>LABOUR</b>					
2.1	Remove & re-install rear cargo deck for partition repair					4
2.2	Panel beat & align rear cargo deck partition					4
2.3	Remove & fabricate dented & dislodged structure					20
2.4	Remove & replace torn canvas					2
2.5	Putty & spray paint canopy & partition					12
		TOTAL PARTS COST				
		TOTAL MAN-HOUR				42

Vehicle Inspected By

OISUN PIN  
Asst. Automotive Assessor

ADRIAN LING WAI PING  
B.Eng,AMSOE,AMIRTE,AMSAE-A,M.MATAI  
Licensed Appraiser

**DISCLAIMER OF LIABILITY TO THIRD PARTIES:-** This Report is made solely for the use and benefit of the Client named on the front page of this Report. No liability or responsibility whatsoever, in contract or tort, is accepted to any third party who may rely on the Report wholly or in part. Any third party acting or relying on this Report, in whole or in part, does so at his or her own risk.



## LKK Auto Consultants Pte Ltd

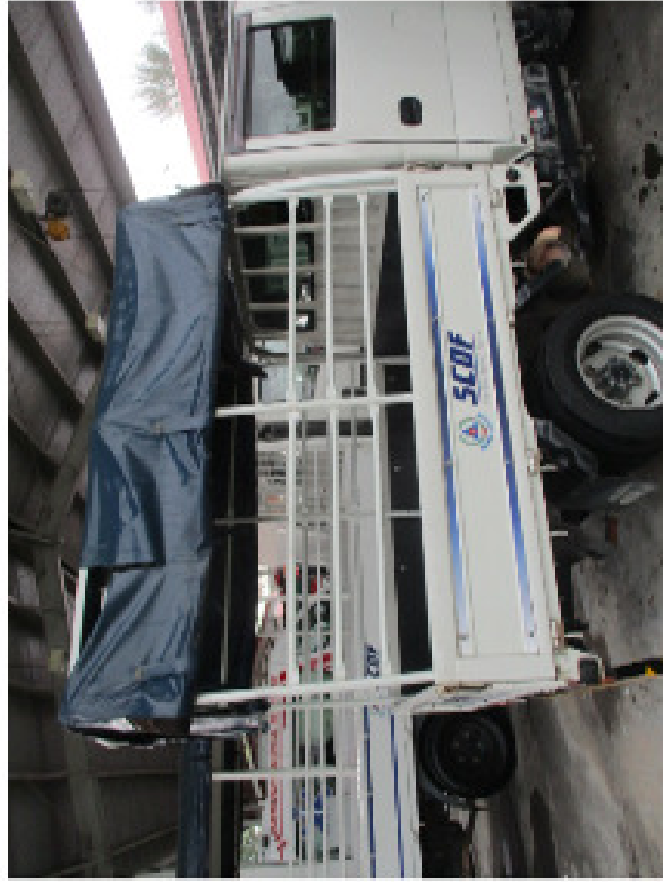
51 Ubi Ave 1 #01-25 Paya Ubi Industrial Park, Singapore 408933

TEL: 6256 3561 FAX: 6256 4315

Reg. No: 199607198R GST Reg. No. 19-9607198-R

PHOTOGRAPHS FOR VEHICLE NO. YN 4200T

INSPECTION





## LKK Auto Consultants Pte Ltd

51 Ubi Ave 1 #01-25 Paya Ubi Industrial Park, Singapore 408933

TEL: 6256 3561 FAX: 6256 4315

Reg. No: 199607198R GST Reg. No. 19-9607198-R





## LKK Auto Consultants Pte Ltd

51 Ubi Ave 1 #01-25 Paya Ubi Industrial Park, Singapore 408933

TEL: 6256 3561 FAX: 6256 4315

Reg. No: 199607198R GST Reg. No. 19-9607198-R







## LKK Auto Consultants Pte Ltd

51 Ubi Ave 1 #01-25 Paya Ubi Industrial Park, Singapore 408933

TEL: 6256 3561 FAX: 6256 4315

Reg. No: 199607198R GST Reg. No. 19-9607198-R





## LKK Auto Consultants Pte Ltd

51 Ubi Ave 1 #01-25 Paya Ubi Industrial Park, Singapore 408933

TEL: 6256 3561 FAX: 6256 4315

Reg. No: 199607198R GST Reg. No. 19-9607198-R

