



## LKK Auto Consultants Pte Ltd

51 Ubi Ave 1 #01-25 Paya Ubi Industrial Park, Singapore 408933

TEL: 6256 3561 FAX: 6256 4315

Reg. No: 199607198R GST Reg. No. 19-9607198-R

### TAX INVOICE

EQ INSURANCE COMPANY LTD  
5 MAXWELL ROAD  
#17-00 TOWER BLOCK  
MND COMPLEX  
SINGAPORE 069110

INV No. AC2005608  
INV Date 14/08/2020  
Reference CC3/EQI20007342/Qga3s2  
Code EQI



#### PROFESSIONAL SERVICE FEE

Vehicle No. SHB 1722M  
Insured Veh. SJN 7337R  
Claim No. DM20HO01035  
Policy No.  
Accident Date 08/07/2020  
Inspection Date 09/07/2020

Description	Total
Survey Inspection	160.00
Resurvey Inspection	
Digital Photographs	
Transportation	
<b>Subtotal</b>	<b>160.00</b>
<b>GST (7%)</b>	<b>11.20</b>
<b>Grand Total</b>	<b>171.20</b>

We shall be glad if you could forward the payment at your early convenience.

Cheque should be crossed and made payable to 'LKK Auto Consultants Pte Ltd'

LKK Auto Consultants Pte Ltd



## LKK Auto Consultants Pte Ltd

51 Ubi Ave 1 #01-25 Paya Ubi Industrial Park, Singapore 408933

TEL: 6256 3561 FAX: 6256 4315

Reg. No: 199607198R GST Reg. No. 19-9607198-R

### Affiliated to Federation Internationale Des Experts En Automobile

EQ INSURANCE COMPANY LTD

Ref : CC3/EQI20007342/Qga3s2

5 MAXWELL ROAD  
#17-00 TOWER BLOCK  
MND COMPLEX SINGAPORE 069110

Date : 14-08-2020



Code : EQI

### 1. Policy Particulars :- THIRD PARTY CLAIM

Insured Veh.	SJN 7337R	Veh. Inspected	SHB 1722M
Policy No.		Coverage (\$)	0.00
Claim No.	DM20HO01035	Excess (\$)	0.00
Assign From		Assign Date	09/07/2020

### 2. Vehicle Particulars & Condition

Make & Model	TOYOTA PRIUS	c.c	1798
Engine No.	HIDDEN	Year of Reg.	2015
Chassis No.	JTDKN36UX05757173	Colour	MAROON
Odometer	755805	Steering	IN ORDER
Brakes	IN ORDER	Modification	SPORTS RIM
General	FAIR		

### 3. Conditions of Tyres

	Size	Make	Balance
R/H Front Tyre	195/65 R15	WEST LAKE	6 mm
L/H Front Tyre	195/65 R15	WEST LAKE	6 mm
R/H Rear Tyre	195/65 R15	WEST LAKE	6 mm
L/H Rear Tyre	195/65 R15	WEST LAKE	6 mm

### 4. Description of Damages

THE VEHICLE SUSTAINED DAMAGES AT THE REAR PORTION. DAMAGES SEE DETAILS.
--

### 5. General Information

Accident Date	08/07/2020	Inspection Date	09/07/2020
Survey held at	SMRT AUTOMOTIVE SERVICES PTE LTD 60 WOODLANDS INDUSTRIAL PARK E4 SINGAPORE 757705		

### 5a. Remarks

A) THE INSPECTION WAS CONDUCTED ON A "WITHOUT PREJUDICE" BASIS. B) IN ACCORDANCE TO YOUR INSTRUCTIONS, WE HAVE NOT AUTHORISED REPAIRS.
---

### 5b. Estimate Days of Repair

ESTIMATED NORMAL PERIOD FOR REPAIR:	2 Working Days
-------------------------------------	----------------



# LKK Auto Consultants Pte Ltd

51 Ubi Ave 1 #01-25 Paya Ubi Industrial Park, Singapore 408933

TEL: 6256 3561 FAX: 6256 4315

Reg. No: 199607198R GST Reg. No. 19-9607198-R

Page No.:1 of 2

## ADJUSTMENT ON REPAIR COST FOR VEHICLE NO. SHB 1722M

Qty	Description of Parts	Condition	Estimate By Workshop (\$))	Our Adjusted (\$)
	<b><u>REPLACEMENT OF PARTS</u></b>			
1	BUMPER REAR (DISC 25%)	DENTED	458.60	343.95
10	BUMPER CLIPS @ \$1.61 (DISC 25%)	NECESSARY	16.10	12.08
2	PIXEL STICKER @ \$60.00 (SN)	NECESSARY	120.00	120.00
1	ANTENNA, ELECTRICAL LOWER REAR	SERVICEABLE	157.40	-
1	SENSOR REVERSE	SERVICEABLE	180.00	-
1	BUMPER LIP COVER RR/RH	SERVICEABLE	118.10	-
1	BUMPER LIP REAR	SERVICEABLE	228.90	-
1	BUMPER SEAL, RR RH	SERVICEABLE	65.70	-
1	BUMPER SIDE RETAINER RR/LH	SERVICEABLE	94.80	-
1	BUMPER SIDE RETAINER RR/RH	SERVICEABLE	94.80	-
1	UNDER COVER SUBASSY, RR FLOOR	SERVICEABLE	514.50	-
1	TAILGATE ASY	SERVICEABLE	1,007.90	-
1	NAME PLATE (HYBRID)	SERVICEABLE	51.90	-
1	END PANEL	SERVICEABLE	602.10	-
1	SEALANT SIKAFLEX	SERVICEABLE	37.00	-
1	FLOOR PANEL RR / RH	SERVICEABLE	209.90	-
1	BOARD ASSY, RR RH	SERVICEABLE	379.20	-
1	SPACER, RR FLOOR	SERVICEABLE	130.60	-
1	PANEL ASSY, DECK RH	SERVICEABLE	307.00	-
1	BATTERY	SERVICEABLE	278.00	-
1	BATTERY CLAMP	SERVICEABLE	16.10	-
1	BATTERY TRAY	SERVICEABLE	42.80	-
1	TAIL LAMP BRACKET, RH	SERVICEABLE	30.70	-
1	TAIL LAMP RH	SERVICEABLE	557.80	-
1	FENDER RR/RH	SERVICEABLE	766.80	-
1	SMRT LOGO	SERVICEABLE	7.80	-
1	STICKER DECAL 6555 8888	SERVICEABLE	21.60	-
1	FENDER LINER RR/RH	SERVICEABLE	141.30	-
1	DUCT ASSY, QUARTER	SERVICEABLE	70.40	-
1	BUMPER REINFORCEMENT REAR	SERVICEABLE	205.70	-
1	ARM SUB-ASSY, RR BUMPER LH	SERVICEABLE	139.60	-

Report Ref No. CC3/EQI20007342/Qga3s2



## LKK Auto Consultants Pte Ltd

51 Ubi Ave 1 #01-25 Paya Ubi Industrial Park, Singapore 408933

TEL: 6256 3561 FAX: 6256 4315

Reg. No: 199607198R GST Reg. No. 19-9607198-R

Page No.:2 of 2

Qty	Description of Parts	Condition	Estimate By Workshop (\$)	Our Adjusted (\$)
1	ARM SUB-ASSY, RR BUMPER RH	SERVICEABLE	139.60	-
1	ADVERTISEMENT STICKER (SN)	NECESSARY	296.88	296.88
			7,489.58	772.91
	<b>LABOUR</b>			
	PANEL BEATING & BODYWORK.		845.00	200.00
	SPRAY PAINT.		1,854.00	200.00
	TO CHECK WIRING AND SYSTEM FUNCTION.		80.00	20.00
	TO APPLY RUST-PROOFING ON AFFECTED AREA.		100.00	20.00
	TO TEST AND REFIX REVERSE SENSOR SYSTEM.		120.00	30.00
	TO REMOVE AND REFIT WIRE HARDESS.	NOT NECESSARY	200.00	-
	TO REPLACE SUNDRY PARTS.	NOT NECESSARY	100.00	-
	TO WASH AND VACUUM.	NOT NECESSARY	60.00	-
			3,359.00	470.00
<b>GRAND TOTAL</b>			<b>10,848.58</b>	<b>1,242.91</b>
<b>RECOMMENDED COST OF LUMP SUM REPAIRS (TO ITS PRE-ACCIDENT CONDITION)</b>				<b>1,150.00</b>

Report Ref No. CC3/EQI20007342/Qga3s2

OI SUN PIN

Asst. Automotive Assessor

HO LEONG CHUAN

Automotive Assessor

DISCLAIMER OF LIABILITY TO THIRD PARTIES:- This Report is made solely for the use and benefit of the Client named on the front page of this Report.

No liability of responsibility whatsoever, in contract or tort, is accepted to any third party who may rely on the Report wholly or in part. Any third party acting or replying on this Report, in whole or in part, does so at his or her own risk.



## LKK Auto Consultants Pte Ltd

51 Ubi Ave 1 #01-25 Paya Ubi Industrial Park, Singapore 408933

TEL: 6256 3561 FAX: 6256 4315

Reg. No: 199607198R GST Reg. No. 19-9607198-R

PHOTOGRAPHS FOR VEHICLE NO. SHB 1722M

INSPECTION







## LKK Auto Consultants Pte Ltd

51 Ubi Ave 1 #01-25 Paya Ubi Industrial Park, Singapore 408933

TEL: 6256 3561 FAX: 6256 4315

Reg. No: 199607198R GST Reg. No. 19-9607198-R



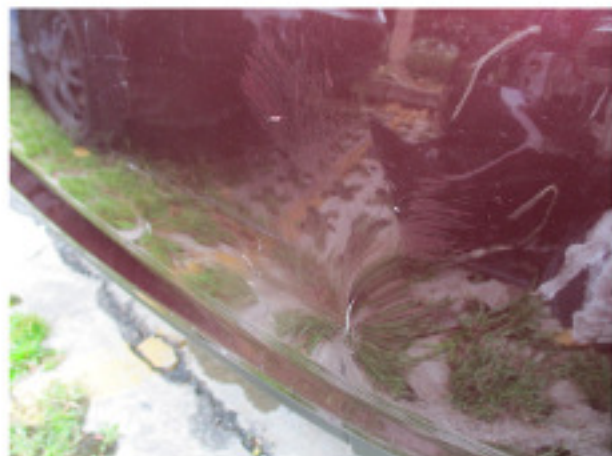


## LKK Auto Consultants Pte Ltd

51 Ubi Ave 1 #01-25 Paya Ubi Industrial Park, Singapore 408933

TEL: 6256 3561 FAX: 6256 4315

Reg. No: 199607198R GST Reg. No. 19-9607198-R







## **LKK Auto Consultants Pte Ltd**

51 Ubi Ave 1 #01-25 Paya Ubi Industrial Park, Singapore 408933

TEL: 6256 3561 FAX: 6256 4315

Reg. No: 199607198R GST Reg. No. 19-9607198-R







## LKK Auto Consultants Pte Ltd

51 Ubi Ave 1 #01-25 Paya Ubi Industrial Park, Singapore 408933

TEL: 6256 3561 FAX: 6256 4315

Reg. No: 199607198R GST Reg. No. 19-9607198-R

PHOTOGRAPHS FOR VEHICLE NO. SHB 1722M

RE-INSPECTION

