

## Summer Lee (LKK Auto)

---

**From:** Irene Tay <irene.tay@sg.cntaiping.com>  
**Sent:** Thursday, 21 May, 2020 4:44 PM  
**To:** Kong, Charmaine (VWG Singapore); meiy.wong@vw.com.sg; Cheong, Pearlyn (VWG Singapore)  
**Cc:** assignments; Admin A  
**Subject:** FW: REQUEST FOR DIRECT SETTLEMENT FOR ACCDT INVOLVING SLZ1101G & SMP320M ON 20.5.2020  
**Attachments:** SLZ1101G- AIG VS CHINA TAIPING.pdf; Estimate.pdf

Dear Mdm,

We refer to the above matter and your email below.

Liability is down on our insured. We are prepared to do a direct settlement with you.

Aside to LKK;

Please get your surveyor to liaise with Charmaine from Volkswagen to conduct survey.

Regards,

**Irene Tay**  
Executive  
Claims Department (Motor Division)

**China Taiping Insurance (Singapore) Pte. Ltd.**  
3 Anson Road #15-00 Springleaf Tower Singapore 079909  
DID: (65) 63896192 | F:(65) 62247478/62247175

**W:** [www.sg.cntaiping.com](http://www.sg.cntaiping.com) | **FB:** [www.facebook.com/chinataipingsg/](https://www.facebook.com/chinataipingsg/) | **WeChat:** 太平獅城 Taiping SG

*Disclaimer: This e-mail and any files transmitted with it is intended only for the named recipients and may contain confidential information. Any unauthorized disclosure, use or dissemination of this message, either in whole or partial, is prohibited. If you are not the intended recipient, please notify the sender immediately. Please delete the e-mail and any copies of it thereafter.*

---

**From:** Kong Charmaine (VGS - SG/Singapore) <charmaine.kong@vw.com.sg>  
**Sent:** Thursday, May 21, 2020 2:39 PM  
**To:** Claims Dept of CTI <claimsdept@sg.cntaiping.com>  
**Cc:** Wong Meiy (VGS - SG/Singapore) <meiy.wong@vw.com.sg>; Cheong Pearlyn (VGS - SG/Singapore) <Pearlyn.cheong@vw.com.sg>; Goh Edmund (VGS - SG/Singapore) <edmund.goh@vw.com.sg>; Tang Shu Shi (VGS - SG/Singapore) <shushi.tang@vw.com.sg>; Chee Steven (VGS - SG/Singapore) <steven.chee@vw.com.sg>  
**Subject:** REQUEST FOR DIRECT SETTLEMENT FOR ACCDT INVOLVING SLZ1101G & SMP320M ON 20.5.2020

Dear Claims,

Please revert on liability & survey arrangements.

Thanks.

Best regards,

Charmaine Kong  
Insurance Service Advisor  
Aftersales

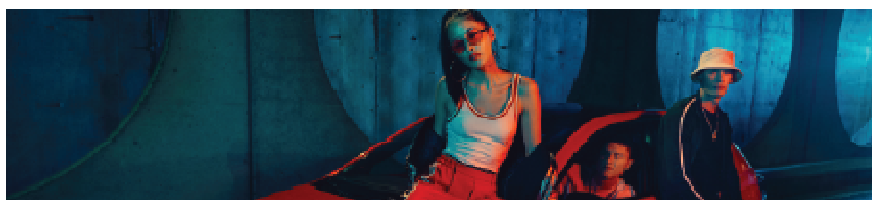
Volkswagen Group Singapore Pte Ltd  
247 Alexandra Road  
Singapore 159934

Direct line: +65 6305 7176  
Main Line: +65 6305 7299  
Main Fax: +65 6474 3643  
[charmaine.kong@vw.com.sg](mailto:charmaine.kong@vw.com.sg)  
<http://www.vw.com.sg>

**VOLKSWAGEN**  
GROUP SINGAPORE



Das **Welt**Auto.



Internal