



LKK Auto Consultants Pte Ltd

51 Ubi Ave 1 #01-25 Paya Ubi Industrial Park, Singapore 408933

TEL: 6256 3561 FAX: 6256 4315

Reg. No: 199607198R GST Reg. No. 19-9607198-R

TAX INVOICE

CHINA TAIPING INSURANCE (S) PTE LTD
3 ANSON ROAD #16-00
SPRINGLEAF TOWER
SINGAPORE 079909

INV No. AC2006294
INV Date 14/09/2020
Reference CC3/CTI20004816/R1ds3s2
Code CTI



PROFESSIONAL SERVICE FEE

Vehicle No. SHB 5261A
Insured Veh. GBG 8888S
Claim No. SNM20D201601
Policy No. DMCVSN3066381901
Accident Date 31/03/2020
Inspection Date 01/04/2020

Description	Total
Third Party Express Settlement	400.00
Subtotal	400.00
GST (7%)	28.00
Grand Total	428.00

We shall be glad if you could forward the payment at your early convenience.

Cheque should be crossed and made payable to 'LKK Auto Consultants Pte Ltd'

LKK Auto Consultants Pte Ltd



LKK Auto Consultants Pte Ltd

51 Ubi Ave 1 #01-25 Paya Ubi Industrial Park, Singapore 408933

TEL: 6256 3561 FAX: 6256 4315

Reg. No: 199607198R GST Reg. No. 19-9607198-R

Affiliated to Federation Internationale Des Experts En Automobile

CHINA TAIPING INSURANCE (S) PTE LTD

Ref : CC3/CTI20004816/R1ds3s2

3 ANSON ROAD #16-00
SPRINGLEAF TOWERS SINGAPORE 079909

Date : 14-09-2020



Code : CTI

1. Policy Particulars :- THIRD PARTY CLAIM

Insured Veh.	GBG 8888S	Veh. Inspected	SHB 5261A
Policy No.	DMCVSN3066381901	Coverage (\$)	0.00
Claim No.	SNM20D201601	Excess (\$)	0.00
Assign From		Assign Date	01/04/2020

2. Vehicle Particulars & Condition

Make & Model	TOYOTA PRIUS HYBRID 1.8 CVT	c.c	1798
Engine No.	HIDDEN	Year of Reg.	2017
Chassis No.	JTDKB3FU803572673	Colour	MAROON
Odometer	-	Steering	IN ORDER
Brakes	IN ORDER	Modification	NIL
General	FAIR		

3. Conditions of Tyres

	Size	Make	Balance
R/H Front Tyre	195/65 R15	TOURING	6 mm
L/H Front Tyre	195/65 R15	TOURING	6 mm
R/H Rear Tyre	195/65 R15	TOURING	6 mm
L/H Rear Tyre	195/65 R15	TOURING	6 mm

4. Description of Damages

THE VEHICLE SUSTAINED DAMAGES AT THE FRONT PORTION. DAMAGES SEE DETAILS.

5. General Information

Accident Date	31/03/2020	Inspection Date	01/04/2020
Survey held at	SMRT AUTOMOTIVE SERVICES PTE LTD 60 WOODLANDS INDUSTRIAL PARK E4 SINGAPORE 757705		

5a. Remarks

A)THE INSPECTION WAS CONDUCTED ON A"WITHOUT PREJUDICE" BASIS. B)IN ACCORDANCE TO YOUR INSTRUCTIONS, WE HAVE NOT AUTHORISED REPAIRS.
--

5b. Estimate Days of Repair

ESTIMATED NORMAL PERIOD FOR REPAIR:	12 Working Days
-------------------------------------	------------------------



LKK Auto Consultants Pte Ltd

51 Ubi Ave 1 #01-25 Paya Ubi Industrial Park, Singapore 408933

TEL: 6256 3561 FAX: 6256 4315

Reg. No: 199607198R GST Reg. No. 19-9607198-R

Page No.:1 of 6

ADJUSTMENT ON REPAIR COST FOR VEHICLE NO. SHB 5261A

Qty	Description of Parts	Condition	Estimate By Workshop (\$))	Our Adjusted (\$)
	<u>REPLACEMENT OF PARTS</u>			
1	COVER, FR BUMPER (DISC 25%)	TORN	495.50	371.63
1	SUPPORT, FR BUMPER RH (DISC 25%)	CRACKED	76.90	57.68
1	SUPPORT, FR BUMPER LH (DISC 25%)	CRACKED	82.30	61.73
1	COVER, FR BUMPER RH (DISC 25%)	TORN	28.10	21.08
1	COVER, FR BUMPER LH (DISC 25%)	TORN	28.10	21.08
1	BRACKET, FR BUMPER (DISC 25%)	CRACKED	99.80	74.85
1	SEAL, HOOD TO FR END (DISC 25%)	NECESSARY	24.40	18.30
1	EMBLEM ASSY FRONT (DISC 25%)	NECESSARY	87.10	65.33
1	GRILLE, RADIATOR (DISC 25%)	BROKEN	165.00	123.75
10	CLIPS PIECE, FRT & RR BUMPER @ \$1.50 (DISC 25%)	NECESSARY	15.00	11.25
1	RETAINER, FR BUMPER, LH & RH (DISC 25%)	NECESSARY	8.50	6.38
1	COVER, ENGINE UNDER CENTER (DISC 25%)	CRACKED	94.50	70.88
1	COVER, ENGINE UNDER SIDE RH (DISC 25%)	CRACKED	76.90	57.68
1	GRILLE SUB-ASSY (DISC 25%)	BROKEN	335.60	251.70
1	REINFORCEMENT FRONT UPPER (DISC 25%)	BENT	691.10	518.33
1	ABSORBER, FR BUMPER (DISC 25%)	MISSING	70.30	52.73
1	EXTENSION; SUB-ASSY, LH (DISC 25%)	BENT	116.30	87.23
1	EXTENSION SUB-ASSY, RH (DISC 25%)	BENT	116.30	87.23
1	REINFORCEMENT FRONT LOWER	BENT	238.50	178.88
1	ABSORBER, FR BUMPER LOWER (DISC 25%)	MISSING	117.00	87.75
1	EMBLEM, SIDE PANEL (HYBRID) (DISC 25%)	NECESSARY	52.90	39.68
1	FENDER SUB-ASSY, FR, LH (DISC 25%)	BENT	933.10	699.83
1	EMBLEM, SIDE PANEL (HYBRID) (DISC 25%)	NECESSARY	52.90	39.68
1	LINER, FR FENDER, RH (DISC 25%)	DEFORMED	198.40	148.80
1	LINER, FR FENDER, LH (DISC 25%)	DEFORMED	194.30	145.73
1	HOOD SUB-ASSY (DISC 25%)	BUCKLED	938.40	703.80
1	INSULATOR, HOOD (DISC 25%)	DEFORMED	393.90	295.43
6	INSULATOR, HOOD CLIP @ \$2.30 (DISC 25%)	NECESSARY	13.80	10.35
1	SEAL SUB-ASSY, RH (DISC 25%)	NECESSARY	50.20	37.65
1	SEAL SUB-ASSY, LH (DISC 25%)	NECESSARY	50.20	37.65
1	RETAINER, FR WHEEL LH (DISC 25%)	NECESSARY	3.10	2.33

Report Ref No. CC3/CTI20004816/R1ds3s2



LKK Auto Consultants Pte Ltd

51 Ubi Ave 1 #01-25 Paya Ubi Industrial Park, Singapore 408933

TEL: 6256 3561 FAX: 6256 4315

Reg. No: 199607198R GST Reg. No. 19-9607198-R

Page No.:2 of 6

Qty	Description of Parts	Condition	Estimate By Workshop (\$)	Our Adjusted (\$)
1	RETAINER, FR WHEEL RH (DISC 25%)	NECESSARY	3.10	2.33
1	RETAINER, FR FENDER NO.2 (DISC 25%)	NECESSARY	16.80	12.60
1	RETAINER, FR FENDER NO.1 (DISC 25%)	NECESSARY	4.90	3.68
1	HINGE ASSY, HOOD, RH (DISC 25%)	BENT	57.00	42.75
1	HINGE ASSY, HOOD, LH (DISC 25%)	BENT	57.00	42.75
1	LOCK ASSY, HOOD (DISC 25%)	BENT	131.10	98.33
1	COVER, RADIATOR (DISC 25%)	CRACKED	227.80	170.85
1	SUPPORT S/A UPPER (DISC 25%)	CRACKED	364.90	273.68
1	SUPPORT S/A RH (DISC 25%)	CRACKED	237.00	177.75
1	SUPPORT S/A LH (DISC 25%)	CRACKED	237.00	177.75
1	SUPPORT, RADIATOR UPPER RH (DISC 25%)	CRACKED	76.70	57.53
1	SUPPORT, RADIATOR UPPER LH (DISC 25%)	CRACKED	76.70	57.53
1	GUIDE, RADIATOR AIR, (DISC 25%)	CRACKED	93.90	70.43
1	SEAL, RADIATOR GRILLE (DISC 25%)	NECESSARY	40.70	30.53
1	BRACE, HOOD LOCK SUPPORT (DISC 25%)	BENT	76.20	57.15
1	AIR CON CONDENSER ASSY (DISC 25%)	BENT	1,317.70	988.28
1	GROMMET (FOR RADIATOR LOWER) (DISC 25%)	NECESSARY	12.70	9.53
1	CUSHION, (FOR RADIATOR UPPER) (DISC 25%)	NECESSARY	9.80	7.35
1	RADIATOR ASSY (DISC 25%)	BENT	1,841.10	1,380.83
1	AIR CLEANER ASSY (DISC 25%)	CRACKED	956.20	717.15
1	COVER ASSY, ENGINE (DISC 25%) (ADDITIONAL)	CUT	180.10	135.08
1	COVER ASSY, ENGINE UNDER CENTER SET (DISC 25%) (ADDITIONAL)	TORN	452.80	339.60
1	COVER, ENGINE UNDER SIDE LH (DISC 25%) (ADDITIONAL)	CRACKED	76.90	57.68
1	SUPPORT SUB-ASSY LOWER (DISC 25%) (ADDITIONAL)	BENT	397.40	298.05
1	TANK ASSY, INVERTER RESERVE (DISC 25%) (ADDITIONAL)	CRACKED	371.30	278.48
1	WIPER WASHER JAR (DISC 25%) (ADDITIONAL)	DEFORMED	183.60	137.70
1	HORN ASSY, LOW (DISC 25%) (ADDITIONAL)	BENT	112.80	84.60
1	HOSE SUB-ASSY, SUCTION (DISC 25%) (ADDITIONAL)	BENT	541.90	406.43
1	SEAL, RADIATOR TO RH (DISC 25%) (ADDITIONAL)	DEFORMED	24.80	18.60
1	GUIDE, RADIATOR AIR, RH (DISC 25%) (ADDITIONAL)	DEFORMED	54.60	40.95
1	GUIDE, RADIATOR AIR, LH (DISC 25%) (ADDITIONAL)	CRACKED	58.80	44.10

Report Ref No. CC3/CTI20004816/R1ds3s2



LKK Auto Consultants Pte Ltd

51 Ubi Ave 1 #01-25 Paya Ubi Industrial Park, Singapore 408933

TEL: 6256 3561 FAX: 6256 4315

Reg. No: 199607198R GST Reg. No. 19-9607198-R

Page No.:3 of 6

Qty	Description of Parts	Condition	Estimate By Workshop (\$)	Our Adjusted (\$)
1	FAN RADIATOR, RH (DISC 25%) (ADDITIONAL)	CRACKED	233.00	174.75
1	FAN RADIATOR, LH (DISC 25%) (ADDITIONAL)	CRACKED	181.80	136.35
1	FAN SHROUD RADIATOR (DISC 25%) (ADDITIONAL)	CRACKED	219.30	164.48
1	INLET, AIR CLEANER, NO.3 (DISC 25%) (ADDITIONAL)	CRACKED	35.30	26.48
1	INLET, AIR CLEANER, NO.2 (DISC 25%) (ADDITIONAL)	DEFORMED	93.90	70.43
1	INLET, AIR CLEANER, NO.1 (DISC 25%) (ADDITIONAL)	DEFORMED	130.50	97.88
1	MOUDING LH (DISC 25%) (ADDITIONAL)	DEFORMED	83.30	62.48
1	LAMP ASSY, FOG, RH (DISC 10%)	MISSING	910.20	819.18
1	LAMP ASSY, FOG, LH (DISC 10%)	MISSING	910.20	819.18
1	COMPUTER SUB-ASSY, HEADLAMP, LH NO.1 (DISC 10%) (ADDITIONAL)	SCRATCHED	486.40	437.76
1	COMPUTER SUB-ASSY, HEADLAMP, RH NO.1 (DISC 10%) (ADDITIONAL)	CRACKED	486.40	437.76
1	BATTERY (DISC 10%) (ADDITIONAL)	CUT	1,584.90	1,426.41
1	MOTOR, COOLING FAN, RH (DISC 10%) (ADDITIONAL)	CRACKED	443.40	399.06
1	MOTOR COOLING FAN, LH (DISC 10%) (ADDITIONAL)	CUT	543.50	489.15
1	NUMBER PLATE (SN) (ADDITIONAL)	BENT	35.00	35.00
1	NUMBER PLATE FRAME (SN) (ADDITIONAL)	CRACKED	25.00	25.00
4	COOLANT @ \$12.32 (SN) (ADDITIONAL)	NECESSARY	49.28	49.28
1	COVER ASSY, ENGINE	SERVICEABLE	180.10	-
1	COVER ASSY, ENGINE UNDER CENTER SET	SERVICEABLE	452.80	-
1	COVER, ENGINE UNDER SIDE LH	SERVICEABLE	76.90	-
1	COVER, ENGINE UNDER, REAR	SERVICEABLE	36.50	-
1	FRONT REINFORCEMENT SIDE RH	SERVICEABLE	128.20	-
1	FRONT REINFORCEMENT SIDE LH	SERVICEABLE	129.30	-
1	FRONT PLATE, FR SUSPENSION	SERVICEABLE	9.40	-
1	PROTECTOR, FR FENDER LH	SERVICEABLE	90.40	-
1	PROTECTOR, FR FENDER RH	SERVICEABLE	90.40	-
1	PAD, FR WHEEL RH	SERVICEABLE	57.70	-
1	CABLE ASSY, HOOD	SERVICEABLE	53.20	-
1	SUPPORT SUB-ASSY LOWER	SERVICEABLE	397.40	-
1	APRON SUB-ASSY, FRONT FENDER RH	SERVICEABLE	944.20	-
1	APRON SUB-ASSY, FRONT FENDER, LH	SERVICEABLE	944.20	-
1	HINGE ASSY, FRONT DOOR, UPPER LH	SERVICEABLE	82.10	-

Report Ref No. CC3/CTI20004816/R1ds3s2



LKK Auto Consultants Pte Ltd

51 Ubi Ave 1 #01-25 Paya Ubi Industrial Park, Singapore 408933

TEL: 6256 3561 FAX: 6256 4315

Reg. No: 199607198R GST Reg. No. 19-9607198-R

Page No.:4 of 6

Qty	Description of Parts	Condition	Estimate By Workshop (\$))	Our Adjusted (\$)
1	HINGE ASSY, FRONT DOOR, LOWER LH	SERVICEABLE	92.10	-
1	PANEL SUB-ASSY, FRONT DOOR LH	SERVICEABLE	1,249.60	-
1	STICKER DECAL SMRT (DOOR)	SERVICEABLE	60.00	-
1	COMPUTER SUB-ASSY, HEADLAMP, LH NO.1	SERVICEABLE	486.40	-
1	COMPUTER SUB-ASSY, HEADLAMP RH NO.1	SERVICEABLE	486.40	-
1	BATTERY	SERVICEABLE	1,584.00	-
1	BLOCK ASSY, FUSIBLE LINK	SERVICEABLE	99.80	-
1	WIRE, ENGINE ROOM MAIN	SERVICEABLE	6,138.00	-
1	WIRE, ENGINE, NO.3	SERVICEABLE	260.40	-
1	COVER, FUSIBLE LINK	SERVICEABLE	28.30	-
1	BLOCK, JUNCTION	SERVICEABLE	15.80	-
1	INVERTER WATER PUMP ASSY	SERVICEABLE	432.00	-
1	HOSE, HV WATER PUMP OUTLET	SERVICEABLE	29.60	-
1	HOSE, HV WATER PUMP INLET	SERVICEABLE	37.90	-
1	TANK ASSY, INVERTER RESERVE	SERVICEABLE	371.30	-
1	HOSE, INVERTER COOLING OUTLET	SERVICEABLE	29.60	-
1	HOSE, INVERTER RADIATOR INLET	SERVICEABLE	40.70	-
1	HOSE, INVERTER COOLING INLET	SERVICEABLE	43.10	-
1	COOLER, MOTOR COOLING	SERVICEABLE	249.10	-
1	WIPER WASHER INLET	SERVICEABLE	55.40	-
1	WIPER WASHER JAR	SERVICEABLE	183.60	-
1	MOTOR AND PUMP ASSY, WINDSHIELD WASHER	SERVICEABLE	245.00	-
1	NOZZLE, FRONT WASHER	SERVICEABLE	34.10	-
1	HOSE, WINDSHIELD WASHER	SERVICEABLE	14.00	-
1	HORN ASSY, HIGH	SERVICEABLE	112.80	-
1	HORN ASSY, LOW	SERVICEABLE	112.80	-
1	BRACKET, HORN	SERVICEABLE	7.80	-
1	HORN ASSY, SECURITY	SERVICEABLE	112.80	-
1	TUBE & ACCESSORY	SERVICEABLE	574.40	-
1	HOSE SUB-ASS, DISCHARGE	SERVICEABLE	337.10	-
1	HOSE SUB-ASSY, SUCTION	SERVICEABLE	541.90	-
1	PIPE SUB-ASSY, SUCTION	SERVICEABLE	389.60	-
1	BRACKET, COOLER REFRIGERANT HOSE,	SERVICEABLE	13.20	-

Report Ref No. CC3/CTI20004816/R1ds3s2



LKK Auto Consultants Pte Ltd

51 Ubi Ave 1 #01-25 Paya Ubi Industrial Park, Singapore 408933

TEL: 6256 3561 FAX: 6256 4315

Reg. No: 199607198R GST Reg. No. 19-9607198-R

Page No.:5 of 6

Qty	Description of Parts	Condition	Estimate By Workshop (\$))	Our Adjusted (\$)
1	BRACKET, COOLER REFRIGERANT HOSE	SERVICEABLE	18.70	-
1	SEAL, RADIATOR TO RH	SERVICEABLE	24.80	-
1	SEAL, RADIATOR TO LH	SERVICEABLE	24.80	-
1	GUIDE, RADIATOR AIR, RH	SERVICEABLE	54.60	-
1	GUIDE, RADIATOR AIR, LH	SERVICEABLE	58.80	-
1	GUIDE RADIATOR AIR, UPPER	SERVICEABLE	44.70	-
1	FAN RADIATOR, RH	SERVICEABLE	233.00	-
1	FAN RADIATOR, LH	SERVICEABLE	181.80	-
1	FAN SHROUD RADIATOR	SERVICEABLE	219.30	-
1	MOTOR, COOLING FAN, RH	SERVICEABLE	443.40	-
1	MOTOR, COOLING FAN, LH	SERVICEABLE	543.50	-
1	CLIP, HOSE RADIATOR, NO.2	SERVICEABLE	8.30	-
1	HOSE, RADIATOR, NO.2	SERVICEABLE	40.20	-
1	HOSE, WATER BY PASS, NO.2	SERVICEABLE	37.40	-
1	CLIP, (FOR WATER BY-PASS HOSE NO.2)	SERVICEABLE	6.80	-
1	PIPE WATER BY-PASS, NO.2	SERVICEABLE	11.00	-
1	CLIP, (FOR WATER BY-PASS HOSE NO.4)	SERVICEABLE	7.50	-
1	HOSE, WATER BY-PASS, NO.4	SERVICEABLE	13.20	-
1	HOSE, WATER BY-PASS, NO.1	SERVICEABLE	37.40	-
1	CLIP, (FOR WATER BY-PASS HOSE NO.1)	SERVICEABLE	7.30	-
1	INLET, AIR CLEANER NO.3	SERVICEABLE	35.30	-
1	INLET, AIR CLEANER, NO.2	SERVICEABLE	93.90	-
1	INLET, AIR CLEANER, NO.1	SERVICEABLE	130.50	-
1	CLAMP (FOR AIR CLEANER INLET, NO.1)	SERVICEABLE	7.10	-
1	HOSE, AIR CLEANER, NO.1	SERVICEABLE	62.10	-
1	CLAMP (FOR AIR CLEANER HOSE, NO.1)	SERVICEABLE	7.10	-
1	CLAMP (FOR AIR CLEANER HOSE, NO.2)	SERVICEABLE	9.00	-
1	TUBE, UNION (FOR AIR CLEANER HOSE)	SERVICEABLE	19.40	-
1	RESONATOR, INTAKE AIR	SERVICEABLE	14.90	-
1	CLAMP (FOR RESONATOR INTAKE AIR)	SERVICEABLE	7.10	-
1	BRACKET, AIR CLEANER	SERVICEABLE	26.90	-
1	PILLAR, FRONT BODY, RH	SERVICEABLE	339.40	-
1	PILLAR, FRONT BODY, LH	SERVICEABLE	339.40	-

Report Ref No. CC3/CTI20004816/R1ds3s2



LKK Auto Consultants Pte Ltd

51 Ubi Ave 1 #01-25 Paya Ubi Industrial Park, Singapore 408933

TEL: 6256 3561 FAX: 6256 4315

Reg. No: 199607198R GST Reg. No. 19-9607198-R

Page No.:6 of 6

Qty	Description of Parts	Condition	Estimate By Workshop (\$))	Our Adjusted (\$)
1	FENDER SUB-ASSY, FR, RH	TO REPAIR SEE LABOUR	933.10	-
1	MEMBER SUB-ASSY, FR RH	TO REPAIR SEE LABOUR	2,012.70	-
1	MEMBER SUB-ASSY, FR LH	TO REPAIR SEE LABOUR	1,959.50	-
1	UNIT, HEADLAMP, LH (DISC 10%)	BROKEN	2,558.90	2,303.01
1	UNIT, HEADLAMP, RH (DISC 10%)	BROKEN	2,558.90	2,303.01
1	JOINT, WINDSHIELD WASHER HOSE, NO.3 (DISC 25%)	CUT	4.70	3.53
1	PAD, FR WHEEL LH	NOT NECESSARY	57.70	-
			51,928.58	20,886.63
	LABOUR			
	PANEL BEATING & BODYWORK. INCLUSIVE OF THE REPAIR OF FENDER SUB-ASSY, FR, RH; MEMBER SUB-ASSY, FR RH AND MEMBER SUB-ASSY, FR LH.		1,352.00	800.00
	SPRAY PAINT.		3,330.00	1,100.00
	TO APPLY RUST-PROOFING ON AFFECTED AREA.		100.00	60.00
	TO TOP UP A/C GAS.		120.00	100.00
	TO REMOVE AND REFIT WIRE HARNESS.	NOT NECESSARY	120.00	-
	TO REMOVE AND REFIT ENGINE WIRE ROOM.	NOT NECESSARY	120.00	-
	TO REPLACE SUNDRY PARTS.	NOT NECESSARY	100.00	-
	TO CHECK WIRING AND SYSTEM FUNCTION.		80.00	60.00
	TO WASH AND VACUUM.	NOT NECESSARY	60.00	-
	TOWING CHARGE.		56.00	56.00
	CHASSIS ALIGNMENT.		350.00	200.00
			5,788.00	2,376.00
GRAND TOTAL			57,716.58	23,262.63

RECOMMENDED COST OF REPAIRS			23,262.63
------------------------------------	--	--	------------------

Report Ref No. CC3/CTI20004816/R1ds3s2

MOHAMMED RASUL BIN MOHD YUNUS

Automotive Assessor

HO LEONG CHUAN

Automotive Assessor

DISCLAIMER OF LIABILITY TO THIRD PARTIES:- This Report is made solely for the use and benefit of the Client named on the front page of this Report.

No liability of responsibility whatsoever, in contract or tort, is accepted to any third party who may rely on the Report wholly or in part. Any third party acting or replying on this Report, in whole or in part, does so at his or her own risk.



LKK Auto Consultants Pte Ltd

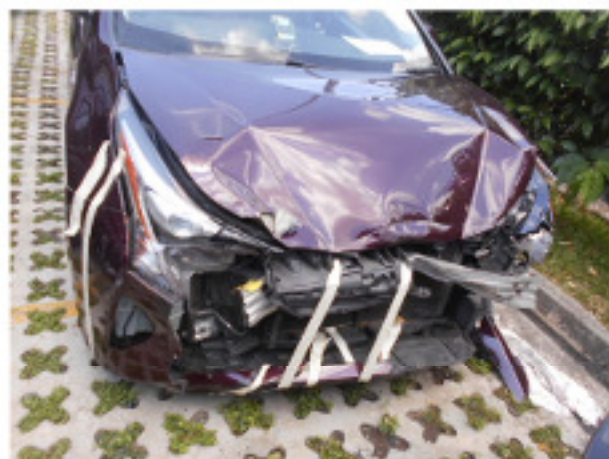
51 Ubi Ave 1 #01-25 Paya Ubi Industrial Park, Singapore 408933

TEL: 6256 3561 FAX: 6256 4315

Reg. No: 199607198R GST Reg. No. 19-9607198-R

PHOTOGRAPHS FOR VEHICLE NO. SHB 5261A

INSPECTION





LKK Auto Consultants Pte Ltd

51 Ubi Ave 1 #01-25 Paya Ubi Industrial Park, Singapore 408933

TEL: 6256 3561 FAX: 6256 4315

Reg. No: 199607198R GST Reg. No. 19-9607198-R





LKK Auto Consultants Pte Ltd

51 Ubi Ave 1 #01-25 Paya Ubi Industrial Park, Singapore 408933

TEL: 6256 3561 FAX: 6256 4315

Reg. No: 199607198R GST Reg. No. 19-9607198-R





LKK Auto Consultants Pte Ltd

51 Ubi Ave 1 #01-25 Paya Ubi Industrial Park, Singapore 408933

TEL: 6256 3561 FAX: 6256 4315

Reg. No: 199607198R GST Reg. No. 19-9607198-R



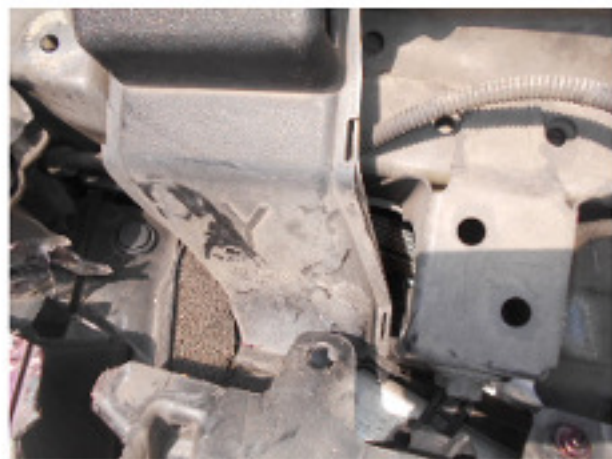


LKK Auto Consultants Pte Ltd

51 Ubi Ave 1 #01-25 Paya Ubi Industrial Park, Singapore 408933

TEL: 6256 3561 FAX: 6256 4315

Reg. No: 199607198R GST Reg. No. 19-9607198-R





LKK Auto Consultants Pte Ltd

51 Ubi Ave 1 #01-25 Paya Ubi Industrial Park, Singapore 408933

TEL: 6256 3561 FAX: 6256 4315

Reg. No: 199607198R GST Reg. No. 19-9607198-R





LKK Auto Consultants Pte Ltd

51 Ubi Ave 1 #01-25 Paya Ubi Industrial Park, Singapore 408933

TEL: 6256 3561 FAX: 6256 4315

Reg. No: 199607198R GST Reg. No. 19-9607198-R





LKK Auto Consultants Pte Ltd

51 Ubi Ave 1 #01-25 Paya Ubi Industrial Park, Singapore 408933

TEL: 6256 3561 FAX: 6256 4315

Reg. No: 199607198R GST Reg. No. 19-9607198-R





LKK Auto Consultants Pte Ltd

51 Ubi Ave 1 #01-25 Paya Ubi Industrial Park, Singapore 408933

TEL: 6256 3561 FAX: 6256 4315

Reg. No: 199607198R GST Reg. No. 19-9607198-R





LKK Auto Consultants Pte Ltd

51 Ubi Ave 1 #01-25 Paya Ubi Industrial Park, Singapore 408933

TEL: 6256 3561 FAX: 6256 4315

Reg. No: 199607198R GST Reg. No. 19-9607198-R



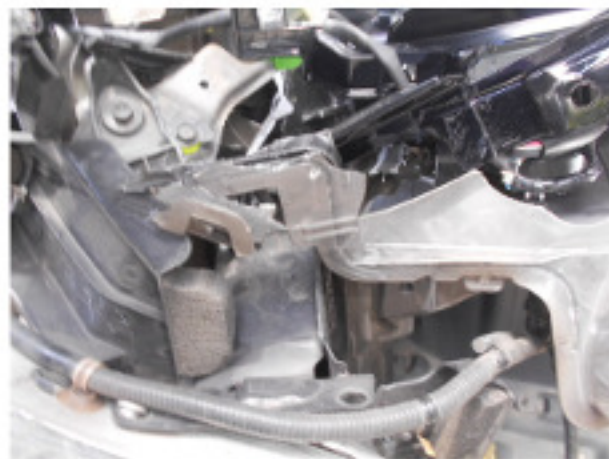


LKK Auto Consultants Pte Ltd

51 Ubi Ave 1 #01-25 Paya Ubi Industrial Park, Singapore 408933

TEL: 6256 3561 FAX: 6256 4315

Reg. No: 199607198R GST Reg. No. 19-9607198-R





LKK Auto Consultants Pte Ltd

51 Ubi Ave 1 #01-25 Paya Ubi Industrial Park, Singapore 408933

TEL: 6256 3561 FAX: 6256 4315

Reg. No: 199607198R GST Reg. No. 19-9607198-R





LKK Auto Consultants Pte Ltd

51 Ubi Ave 1 #01-25 Paya Ubi Industrial Park, Singapore 408933

TEL: 6256 3561 FAX: 6256 4315

Reg. No: 199607198R GST Reg. No. 19-9607198-R

PHOTOGRAPHS FOR VEHICLE NO. SHB 5261A

RE-INSPECTION





LKK Auto Consultants Pte Ltd

51 Ubi Ave 1 #01-25 Paya Ubi Industrial Park, Singapore 408933

TEL: 6256 3561 FAX: 6256 4315

Reg. No: 199607198R GST Reg. No. 19-9607198-R





LKK Auto Consultants Pte Ltd

51 Ubi Ave 1 #01-25 Paya Ubi Industrial Park, Singapore 408933

TEL: 6256 3561 FAX: 6256 4315

Reg. No: 199607198R GST Reg. No. 19-9607198-R





LKK Auto Consultants Pte Ltd

51 Ubi Ave 1 #01-25 Paya Ubi Industrial Park, Singapore 408933

TEL: 6256 3561 FAX: 6256 4315

Reg. No: 199607198R GST Reg. No. 19-9607198-R





LKK Auto Consultants Pte Ltd

51 Ubi Ave 1 #01-25 Paya Ubi Industrial Park, Singapore 408933

TEL: 6256 3561 FAX: 6256 4315

Reg. No: 199607198R GST Reg. No. 19-9607198-R





LKK Auto Consultants Pte Ltd

51 Ubi Ave 1 #01-25 Paya Ubi Industrial Park, Singapore 408933

TEL: 6256 3561 FAX: 6256 4315

Reg. No: 199607198R GST Reg. No. 19-9607198-R



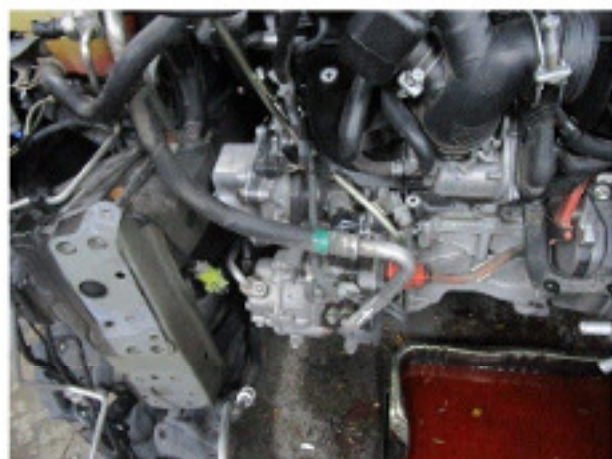


LKK Auto Consultants Pte Ltd

51 Ubi Ave 1 #01-25 Paya Ubi Industrial Park, Singapore 408933

TEL: 6256 3561 FAX: 6256 4315

Reg. No: 199607198R GST Reg. No. 19-9607198-R





LKK Auto Consultants Pte Ltd

51 Ubi Ave 1 #01-25 Paya Ubi Industrial Park, Singapore 408933

TEL: 6256 3561 FAX: 6256 4315

Reg. No: 199607198R GST Reg. No. 19-9607198-R





LKK Auto Consultants Pte Ltd

51 Ubi Ave 1 #01-25 Paya Ubi Industrial Park, Singapore 408933

TEL: 6256 3561 FAX: 6256 4315

Reg. No: 199607198R GST Reg. No. 19-9607198-R





LKK Auto Consultants Pte Ltd

51 Ubi Ave 1 #01-25 Paya Ubi Industrial Park, Singapore 408933

TEL: 6256 3561 FAX: 6256 4315

Reg. No: 199607198R GST Reg. No. 19-9607198-R





LKK Auto Consultants Pte Ltd

51 Ubi Ave 1 #01-25 Paya Ubi Industrial Park, Singapore 408933

TEL: 6256 3561 FAX: 6256 4315

Reg. No: 199607198R GST Reg. No. 19-9607198-R

