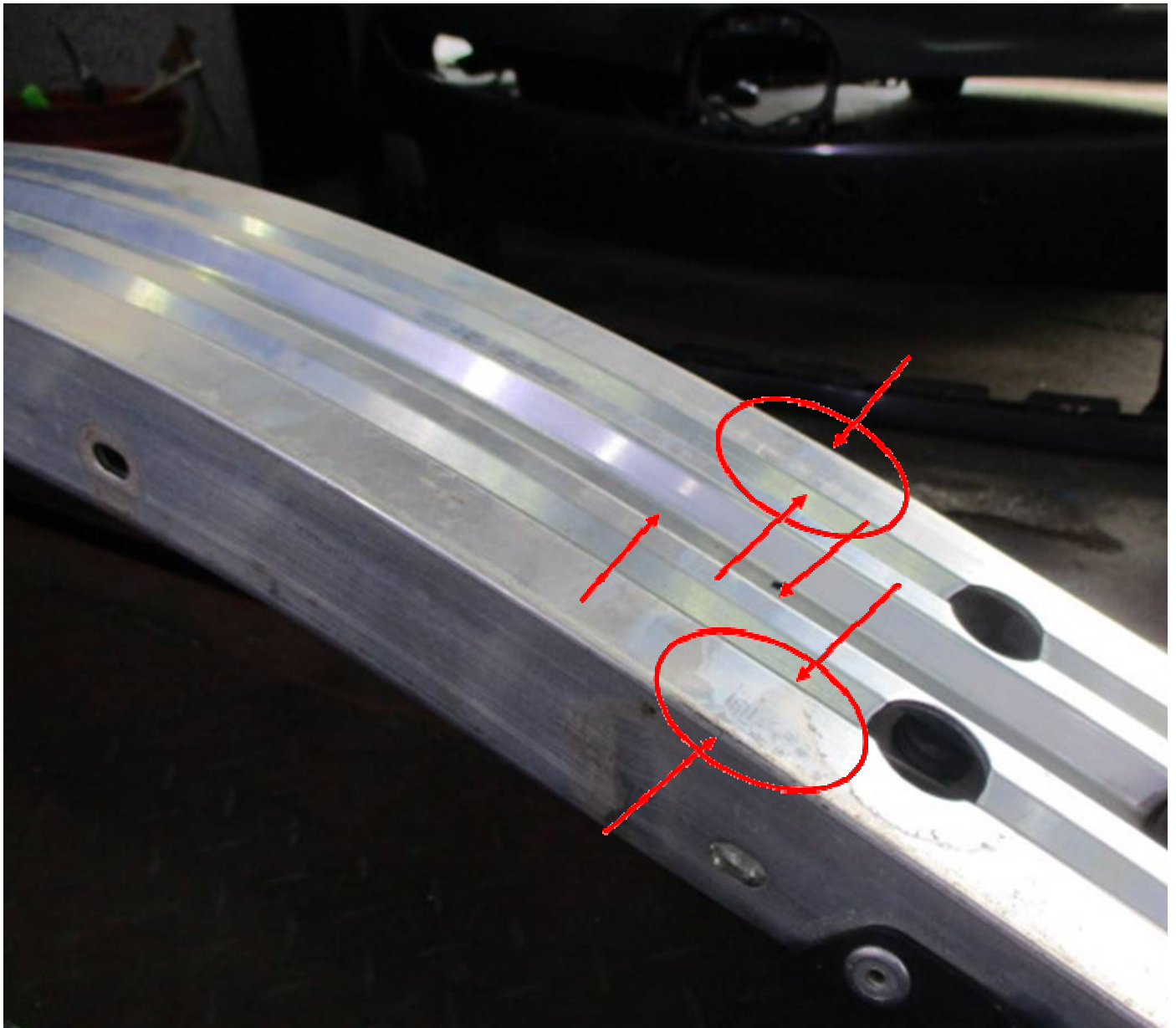


Veron Chen (LKKAuto)

From: Bryan Ang (LKKAuto)
Sent: Friday, 8 January 2021 6:03 PM
To: Jasmine Lok Kheng Kwei; assignments
Cc: SUR; Rajah Kumar
Subject: RE: SHA 7209 U / DOA: 25/03/2020 / LOD 001. RE: SHA 7209 U , DOA: 25/03/2020 MSIG - LOD 003. Ref: 622444

Dear Jasmine

Damage to front bumper reinforcement is marked out in below photo. The circled areas are slightly dented. Because the part is chrome, the dent is difficult to see from photos. However, I have marked out the protruded edges with arrows. If you look at the arrowed location, you will see that the edges are not in a "straight line". Basing on the scene photos, the impact onto the taxi was from a left to right angled towards front direction at the front left of the taxi, which may be possible for the front bumper reinforcement to be shifted slightly towards the right. The dent could have been formed when the front bumper had shifted whilst simultaneously being anchored in place by its holding bracket.



With regards to the front left wheel rim, at the time of after repair inspection, a new front left wheel rim was presented for photo taking. See photo below (more photos in Merimen), red arrow for new rim and yellow arrow for damaged rim. Part was drawn from store but taxi was not sent to external tyre shop for swapping of tyre from damaged rim to new rim when after repair inspection was called by repairer.



Best Regards,

Bryan Ang

LKK Auto Consultants Pte Ltd

phone: 6256-3561 | email: bryanang@lkkauto.com | fax: 6741-4108

Blk 51, Paya Ubi Industrial Park, Ubi Avenue 1, #02-25 | S(408933)

From: Jasmine Lok Kheng Kwei <jasmine_lok@sg.msig-asia.com>

Sent: Tuesday, 5 January 2021 10:31 AM

To: assignments <assignments@lkkauto.com>

Cc: SUR <sur@lkkauto.com>; Rajah Kumar <rajah_kumar@sg.msig-asia.com>


Subject: SHA 7209 U / DOA: 25/03/2020 / LOD 001. RE: SHA 7209 U , DOA: 25/03/2020 MSIG - LOD 003. Ref: 622444

Hi Mr Bryan,

We would like to check on the following items as stated below:-

- 6) Front Bumper Reinforcement - please provide damage photos
- 31) Front wheel Rim - please provide the new fitted wheel rim photos

Thank you

 Please note that our Customer Service Centre will accept walk-ins by appointments only. For more details on how you can make an appointment with us, please refer to our official Facebook page or our website at msig.com.sg.

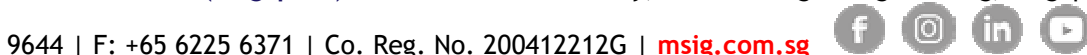
Jasmine Lok

Claims Services (Motor)

DID: +65 6594 2550 | F: +65 6225 7402 | jasmine_lok@sg.msig-asia.com



MSIG Insurance (Singapore) Pte Ltd 16 Raffles Quay, #24-01 Hong Leong Building, Singapore 048581 | T: +65 6220 9644 | F: +65 6225 6371 | Co. Reg. No. 200412212G | msig.com.sg



A Member of **MS&AD** INSURANCE GROUP

CONFIDENTIALITY NOTICE

This e-mail (including any attachments) may contain information that is privileged or confidential. The sending of this e-mail to any person other than the intended recipient is not a waiver of the privilege or confidentiality that attaches to it. If you are not the intended recipient, please notify the sender immediately, delete the email and do not copy, distribute or disclose its contents.