



LKK Auto Consultants Pte Ltd

51 Ubi Ave 1 #01-25 Paya Ubi Industrial Park, Singapore 408933

TEL: 6256 3561 FAX: 6256 4315

Reg. No: 199607198R GST Reg. No. 19-9607198-R

TAX INVOICE

CHINA TAIPING INSURANCE (S) PTE LTD

INV No. AC2102431

3 ANSON ROAD #16-00
SPRINGLEAF TOWER
SINGAPORE 079909

INV Date 12/04/2021
Reference CC3/CTI20003865/Kpa3q2
Code CTI

PROFESSIONAL SERVICE FEE

Vehicle No. SHD 9785T
Insured Veh. SGJ 898R
Claim No. SNM20D201203
Policy No. DMPCSN30209019000
Accident Date 08/03/2020
Inspection Date 09/03/2020

Description	Total
Third Party Express Settlement	400.00
Subtotal	400.00
GST (7%)	28.00
Grand Total	428.00

We shall be glad if you could forward the payment at your early convenience.

Cheque should be crossed and made payable to **'LKK Auto Consultants Pte Ltd'**

LKK Auto Consultants Pte Ltd

LKM



LKK Auto Consultants Pte Ltd

51 Ubi Ave 1 #01-25 Paya Ubi Industrial Park, Singapore 408933

TEL: 6256 3561 FAX: 6256 4315

Reg. No: 199607198R GST Reg. No. 19-9607198-R

Affiliated to Federation Internationale Des Experts En Automobile				
CHINA TAIPING INSURANCE (S) PTE LTD 3 ANSON ROAD #16-00 SPRINGLEAF TOWERSINGAPORE 079909			Ref: CC3/CTI20003865/Kpa3q2	
			Date: 12/04/2021	
			Code: CTI	
1. Policy Particulars :- THIRD PARTY CLAIM				
	Insured Veh.	SGJ 898R	Veh. Inspected	SHD 9785T
	Policy No.	DMPCSN30209019000	Coverage (\$)	0.00
	Claim No.	SNM20D201203	Excess (\$)	0.00
	Assign From		Assign Date	09/03/2020
2. Vehicle Particulars & Condition				
	Make & Model	RENAULT LATITUDE (A)	c.c	1995
	Engine No.	HIDDEN	Year of Reg.	2014
	Chassis No.	VF1ABL15AUC277263	Colour	METALLIC WHITE / RED
	Odometer	737058 KM	Steering	IN ORDER
	Brakes	IN ORDER	Modification	NIL
	General	GOOD		
3. Conditions of Tyres				
		Size	Make	Balance
	R/H Front Tyre	215/60 R16	SAILUN	9 mm
	L/H Front Tyre	215/60 R16	SAILUN	9 mm
	R/H Rear Tyre	215/60 R16	SAILUN	9 mm
	L/H Rear Tyre	215/60 R16	SAILUN	9 mm
4. Description of Damages				
	THE VEHICLE SUSTAINED DAMAGES AT THE O/S BODY. DAMAGES SEE DETAILS.			
5. General Information				
	Accident Date	08/03/2020	Inspection Date	09/03/2020
	Survey held at	TRANS-CAB AUTO SERVICES PTE LTD NO.2 ANG MO KIO ST 63 SINGAPORE 569111		
5a. Remarks				
	A)THE INSPECTION WAS CONDUCTED ON A"WITHOUT PREJUDICE" BASIS. B)IN ACCORDANCE TO YOUR INSTRUCTIONS, WE HAVE NOT AUTHORISED REPAIRS.			
5b. Estimate Days of Repair				
	ESTIMATED NORMAL PERIOD FOR REPAIR:		5 Working Days	



LKK Auto Consultants Pte Ltd

51 Ubi Ave 1 #01-25 Paya Ubi Industrial Park, Singapore 408933

TEL: 6256 3561 FAX: 6256 4315

Reg. No: 199607198R GST Reg. No. 19-9607198-R

Page No.:1 of 4

ADJUSTMENT ON REPAIR COST FOR VEHICLE NO. SHD 9785T

Qty	Description of Parts	Condition	Estimate By Workshop (\$)	Our Adjusted (\$)
	<u>REPLACEMENT OF PARTS</u>			
1	DOOR PANEL FRT RH	BENT	2,844.66	2,844.66
1	DOOR HINGE UPPER RH	TO REPAIR SEE LABOUR	261.28	-
1	DOOR HINGE LOWER RH	TO REPAIR SEE LABOUR	300.55	-
1	DOOR CHECK FRT RH	SERVICEABLE	194.77	-
1	DOOR REGULATOR FRT RH	BENT	758.10	758.10
1	DOOR REGULATOR MOTOR FRT RH	JAMMED	796.46	796.46
1	DOOR REGULATOR GUIDE FRT RH	SERVICEABLE	120.97	-
1	DOOR WEATHERSTRIP FRONT RH	SERVICEABLE	410.27	-
1	DOOR SEAL FRONT RH	SERVICEABLE	72.82	-
1	DOOR SEAL LOWER FRONT RH	SERVICEABLE	93.90	-
1	DOOR SEAL FRT RH	SERVICEABLE	63.10	-
1	DOOR MOULDING BLACK FRONT RH	SERVICEABLE	176.82	-
1	DOOR FINISHER FRONT RH	SERVICEABLE	515.06	-
1	DOOR FINISHER CLIP KIT FRT RH	NOT NECESSARY	94.00	-
1	DOOR GLASS RUNNER SEAL FRONT RH	SERVICEABLE	626.36	-
1	DOOR HANDLE OUTER FRONT RH	TO REPAIR SEE LABOUR	477.76	-
1	DOOR HANDLE CAP FRONT RH	SERVICEABLE	35.52	-
1	DOOR HANDLE SEAL FRT RH	SERVICEABLE	7.89	-
1	DOOR HANDLE COVER FRT RH	SERVICEABLE	13.22	-
1	DOOR HANDLE MODULE FRT RH L70Y	SERVICEABLE	133.60	-
1	DOOR LOCK FRT RH	TO REPAIR SEE LABOUR	908.75	-
1	DOOR CATCH FRT RH	TO REPAIR SEE LABOUR	131.23	-
1	DOOR FINISHER INNER FRT RH	SERVICEABLE	323.44	-
1	DOOR FINISHER INNER BRACKET FRT RH	SERVICEABLE	46.97	-
1	DOOR WAIST SEAL OUTER FRT RH	SERVICEABLE	291.27	-
1	DOOR WAIST SEAL INNER FRT RH	SERVICEABLE	122.15	-
1	DOOR MIRROR ASSY RH	SERVICEABLE	1,483.40	-
1	DOOR HARNESS WIRE RH	SERVICEABLE	2,670.00	-

Report Ref No. CC3/CTI20003865/Kpa3q2



LKK Auto Consultants Pte Ltd

51 Ubi Ave 1 #01-25 Paya Ubi Industrial Park, Singapore 408933

TEL: 6256 3561 FAX: 6256 4315

Reg. No: 199607198R GST Reg. No. 19-9607198-R

Page No.:2 of 4

Qty	Description of Parts	Condition	Estimate By Workshop (\$)	Our Adjusted (\$)
1	ROCKER PANEL INNER GARNISH RH	SERVICEABLE	466.51	-
1	ROCKER PANEL INNER RH	TO REPAIR SEE LABOUR	1,024.79	-
1	ROCKER PANEL OUTER RH	TO REPAIR SEE LABOUR	1,184.99	-
1	ROCKER PANEL CENTER RH	BENT	990.25	990.25
1	FENDER PANEL FRT RH	TO REPAIR SEE LABOUR	437.10	-
1	WHEELARCH FRT RH	SERVICEABLE	191.40	-
1	FENDER BRACKET LOWER RH	SERVICEABLE	11.80	-
1	FENDER INSULATOR RH	SERVICEABLE	65.50	-
1	BUMPER COVER FRT	TO REPAIR SEE LABOUR	747.20	-
1	BUMPER RETAINER FRT RH	SERVICEABLE	101.40	-
1	DOOR PANEL REAR RH	TO REPAIR SEE LABOUR	758.70	-
1	DOOR GUIDE REAR RH	SERVICEABLE	136.40	-
1	DOOR HINGE UPPER REAR RH L70Y	TO REPAIR SEE LABOUR	241.60	-
1	DOOR HINGE LOWER REAR RH L70Y	TO REPAIR SEE LABOUR	169.90	-
1	DOOR CHECK REAR RH	SERVICEABLE	114.90	-
	LESS 10% DISCOUNT		-2,061.68	-538.95
			18,555.08	4,850.52
	<u>SPECIAL NETT ITEMS</u>			
1	FRONT DOOR STICKER "TRANS-CAB" (SN)	NECESSARY	80.00	60.00
1	FRONT DOOR STICKER "CLASSIC" (SN)	NECESSARY	80.00	15.00
1	REAR DOOR STICKER "6555-3333" (SN)	NECESSARY	100.00	60.00
1	RH SIDE RENAULT TYRE 215/60/16 (SN)	NOT NECESSARY	300.00	-
1	RH SIDE RENAULT TYRE RIM (SN)	NOT NECESSARY	380.00	-
1	RH SIDE RENAULT TYRE RIM COVER (SN)	NOT NECESSARY	60.00	-
1	WHEELARCH CLIP FRT RH (SN)	NOT NECESSARY	30.50	-
1	DOOR CHECK BOLT (SN)	SERVICEABLE	10.20	-
1	DOOR CHECK NUT (SN)	SERVICEABLE	10.20	-
1	DOOR GUIDE SCREW (SN)	SERVICEABLE	10.85	-

Report Ref No. CC3/CTI20003865/Kpa3q2



LKK Auto Consultants Pte Ltd

51 Ubi Ave 1 #01-25 Paya Ubi Industrial Park, Singapore 408933

TEL: 6256 3561 FAX: 6256 4315

Reg. No: 199607198R GST Reg. No. 19-9607198-R

Page No.:3 of 4

Qty	Description of Parts	Condition	Estimate By Workshop (\$)	Our Adjusted (\$)
1	DOOR HINGE BOLT (SN)	SERVICEABLE	12.60	-
1	DOOR HINGE NUT (SN)	SERVICEABLE	7.20	-
1	DOOR MOULDING CLIP (SN)	NOT NECESSARY	5.90	-
1	DOOR SEAL CLIP (SN)	NOT NECESSARY	7.30	-
1	BUMPER BRACKET CLIP FRT RH (SN)	NOT NECESSARY	12.00	-
1	BUMPER CLIP FRT (SN)	NOT NECESSARY	66.00	-
			1,172.75	135.00
	LABOUR			
	TO TRANSFER OF TIRE,RIM AND ON WHEEL BALANCING.	NOT NECESSARY	170.00	-
	PANEL BEATING,KNOCKING AND STRAIGHTENING THE NECESSARY PORTION,REMOVE AND RENEWAL OF PARTS,ADJUST AND REALIGN THE SAME.INCLUSIVE OF THE REPAIR OF DOOR HINGE UPPER RH,DOOR HINGE LOWER RH,DOOR HANDLE OUTER FRONT RH,DOOR LOCK FRT RH,DOOR CATCH FRT RH,ROCKER PANEL INNER RH,ROCKER PANEL OUTER RH,FENDER PANEL FRT RH,BUMPER COVER FRT,DOOR PANEL REAR RH,DOOR HINGE UPPER REAR RH L70Y AND DOOR HINGE LOWER REAR RH L70Y.		7,500.00	600.00
	TO CHECK STEERING GEOMETRY AND COMPUTER WHEEL ALIGNMENT.	NOT NECESSARY	220.00	-
	TO REMOVE AND REFIT INTERIOR FITTINGS,TRIMINGS,GARNISH, FITTINGS AND OTHER,TO ENABLE REPAIR.	NOT NECESSARY	380.00	-
	LABOUR CHARGE TO MOUNT AND DISMOUNT VEHICLE ON JIG BENCH,TO FACILITATE REPAIR.	NOT NECESSARY	380.00	-
	TO TRANSFER OF FRONT DOOR FITTINGS,ATTACHMENT AND PERFORM WATER SEEPAGE TEST.		170.00	60.00
	TO TRANSFER OF FRONT FENDER FITTINGS,ATTACHMENT AND PERFORM WATER SEEPAGE TEST.	NOT NECESSARY	170.00	-
	PUTTY AND SPRAY PAINTING OF THE AFFECTED PORTION.		7,500.00	880.00
	TO CHECK ELECTRICAL LIGHTING CONCERNED.		170.00	20.00
	TO RUST-PROOFING OF THE AFFECTED AREAS.		170.00	30.00
	TO TRANSFER OF REAR DOOR FITTINGS,ATTACHMENT AND PERFORM WATER SEEPAGE TEST.	NOT NECESSARY	170.00	-



LKK Auto Consultants Pte Ltd

51 Ubi Ave 1 #01-25 Paya Ubi Industrial Park, Singapore 408933

TEL: 6256 3561 FAX: 6256 4315

Reg. No: 199607198R GST Reg. No. 19-9607198-R

Page No.:4 of 4

Qty	Description of Parts	Condition	Estimate By Workshop (\$)	Our Adjusted (\$)
	TO TRANSFER OF FRONT BUMPER FITTINGS, ATTACHMENT AND PERFORM WATER SEEPAGE TEST.	NOT NECESSARY	170.00	-
			17,170.00	1,590.00
GRAND TOTAL			36,897.83	6,575.52
RECOMMENDED COST OF LUMP SUM REPAIRS (TO ITS PRE-ACCIDENT CONDITION)				5,250.00

Report Ref No. CC3/CTI20003865/Kpa3q2

KONG SENG CHEONG

Licensed Appraiser

DISCLAIMER OF LIABILITY TO THIRD PARTIES:- This Report is made solely for the use and benefit of the Client named on the front page of this Report.

No liability of responsibility whatsoever, in contract or tort, is accepted to any third party who may rely on the Report wholly or in part. Any third party acting or relying on this Report, in whole or in part, does so at his or her own risk.



LKK Auto Consultants Pte Ltd

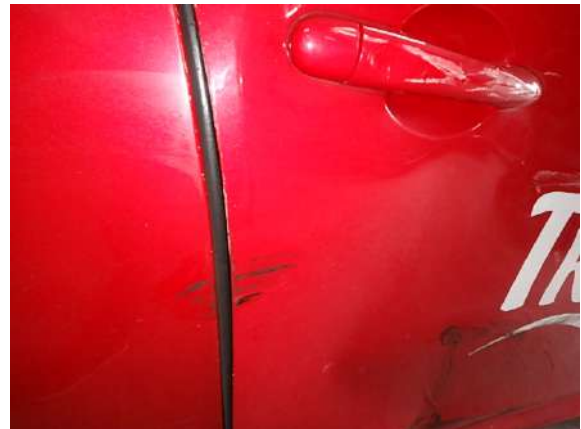
51 Ubi Ave 1 #01-25 Paya Ubi Industrial Park, Singapore 408933

TEL: 6256 3561 FAX: 6256 4315

Reg. No: 199607198R GST Reg. No. 19-9607198-R

PHOTOGRAPHS FOR VEHICLE NO. SHD 9785T

INSPECTION



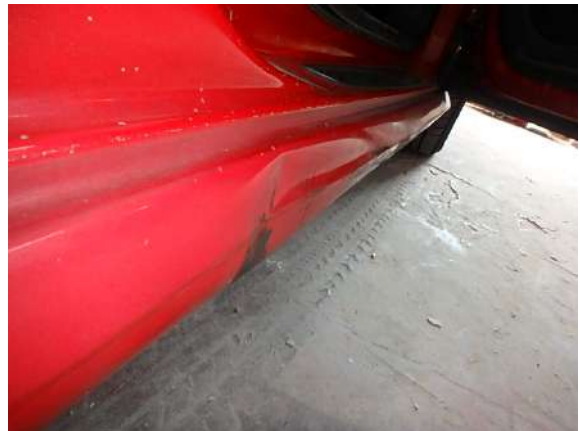


LKK Auto Consultants Pte Ltd

51 Ubi Ave 1 #01-25 Paya Ubi Industrial Park, Singapore 408933

TEL: 6256 3561 FAX: 6256 4315

Reg. No: 199607198R GST Reg. No. 19-9607198-R



LKK Auto Consultants Pte Ltd

51 Ubi Ave 1 #01-25 Paya Ubi Industrial Park, Singapore 408933

TEL: 6256 3561 FAX: 6256 4315

Reg. No: 199607198R GST Reg. No. 19-9607198-R





LKK Auto Consultants Pte Ltd

51 Ubi Ave 1 #01-25 Paya Ubi Industrial Park, Singapore 408933

TEL: 6256 3561 FAX: 6256 4315

Reg. No: 199607198R GST Reg. No. 19-9607198-R

PHOTOGRAPHS FOR VEHICLE NO. SHD 9785T

RE-INSPECTION

