



## LKK Auto Consultants Pte Ltd

51 Ubi Ave 1 #01-25 Paya Ubi Industrial Park, Singapore 408933

TEL: 6256 3561 FAX: 6256 4315

Reg. No: 199607198R GST Reg. No. 19-9607198-R

### TAX INVOICE

MS FIRST CAPITAL INSURANCE LTD  
36 ROBINSON ROAD  
#16-01 CITY HOUSE  
SINGAPORE 068877

INV No. AC2005555  
INV Date 13/08/2020  
Reference CC4/FCI20002678/Uda3q2  
Code FCI2



#### PROFESSIONAL SERVICE FEE

Vehicle No. GBC 3368E  
Insured Veh. SHC 185P  
Claim No. D20000991MFSH/1  
Policy No. D-20094921MFSH  
Accident Date 12/02/2020  
Inspection Date 17/02/2020

Description	Total
Third Party Express Settlement	500.00
<b>Subtotal</b>	<b>500.00</b>
<b>GST (7%)</b>	<b>35.00</b>
<b>Grand Total</b>	<b>535.00</b>

We shall be glad if you could forward the payment at your early convenience.

Cheque should be crossed and made payable to 'LKK Auto Consultants Pte Ltd'

LKK Auto Consultants Pte Ltd



## LKK Auto Consultants Pte Ltd

51 Ubi Ave 1 #01-25 Paya Ubi Industrial Park, Singapore 408933

TEL: 6256 3561 FAX: 6256 4315

Reg. No: 199607198R GST Reg. No. 19-9607198-R

### Affiliated to Federation Internationale Des Experts En Automobile

MS FIRST CAPITAL INSURANCE LTD

Ref : CC4/FCI20002678/Uda3q2

36 ROBINSON ROAD  
#16-01 CITY HOUSESINGAPORE 068877

Date : 13-08-2020



Code : FCI2

### 1. Policy Particulars :- THIRD PARTY CLAIM

<b>Insured Veh.</b>	SHC 185P	<b>Veh. Inspected</b>	GBC 3368E
<b>Policy No.</b>	D-20094921MFSH	<b>Coverage (\$)</b>	0.00
<b>Claim No.</b>	D20000991MFSH/1	<b>Excess (\$)</b>	0.00
<b>Assign From</b>	MERINA CHIA	<b>Assign Date</b>	17/02/2020

### 2. Vehicle Particulars & Condition

<b>Make &amp; Model</b>	NISSAN CABSTAR (M)	<b>c.c</b>	2953
<b>Engine No.</b>	HIDDEN	<b>Year of Reg.</b>	2011
<b>Chassis No.</b>	JN1SC2F24Z0850334	<b>Colour</b>	WHITE
<b>Odometer</b>	470095	<b>Steering</b>	IN ORDER
<b>Brakes</b>	IN ORDER	<b>Modification</b>	NIL
<b>General</b>	GOOD		

### 3. Conditions of Tyres

	Size	Make	Balance
<b>R/H Front Tyre</b>	195 R15	GREEN MAX	7 mm
<b>L/H Front Tyre</b>	195 R15	GREEN MAX	7 mm
<b>R/H Rear Tyre</b>	155 R13 (D)	LEAO	7/7 mm
<b>L/H Rear Tyre</b>	155 R13 (D)	LEAO	7/7 mm

### 4. Description of Damages

THE VEHICLE SUSTAINED DAMAGES AT THE FRONT AND O/S FRONT PORTION. DAMAGES SEE DETAILS.
---

### 5. General Information

<b>Accident Date</b>	12/02/2020	<b>Inspection Date</b>	17/02/2020
<b>Survey held at</b>	SME MOTOR PTE LTD 1 KAKI BUKIT AVE 6 #02-15 (AUTOBAY @KAKI BUKIT) SINGAPORE 417883		

### 5a. Remarks

A)THE INSPECTION WAS CONDUCTED ON A"WITHOUT PREJUDICE" BASIS. B)IN ACCORDANCE TO YOUR INSTRUCTIONS, WE HAVE NOT AUTHORISED REPAIRS.
--

### 5b. Estimate Days of Repair

ESTIMATED NORMAL PERIOD FOR REPAIR:	<b>6 Working Days</b>
-------------------------------------	-----------------------



# LKK Auto Consultants Pte Ltd

51 Ubi Ave 1 #01-25 Paya Ubi Industrial Park, Singapore 408933

TEL: 6256 3561 FAX: 6256 4315

Reg. No: 199607198R GST Reg. No. 19-9607198-R

Page No.:1 of 2

## ADJUSTMENT ON REPAIR COST FOR VEHICLE NO. GBC 3368E

Qty	Description of Parts	Condition	Estimate By Workshop (\$))	Our Adjusted (\$)
<b><u>REPLACEMENT OF PARTS</u></b>				
1	FRT WINDSCREEN MOULDING (N)	NOT NECESSARY	420.00	-
1	FRT PANEL (N)(BADLY DENTED)	NOT CONSISTENT WITH THE IMPACT	1,580.90	-
1	FRT PANEL 'CABSTAR' PLATE (N)	NOT NECESSARY	38.00	-
1	FRT GRILLE (N)	CRACKED	461.90	461.90
1	GRILLE CENTRE LOGO (N)	NECESSARY	60.00	60.00
6	GRILLE CLIPS (N)	NECESSARY	33.00	33.00
1	FRT BUMPER (N)	TORN	1,155.10	945.10
1	HEADLAMP (N)	N/S NOT NECESSARY / O/S CRACKED	1,037.00	473.40
1	RH HEADLAMP LOWER TRIM (N)	N/S NOT NECESSARY / O/S CRACKED	81.30	40.65
1	FRT RH CORNER PANEL (N)	DENTED	436.30	389.90
1	FRT RH DOOR PILLAR (N)	TO REPAIR SEE LABOUR	1,842.40	-
1	FRT CABIN BRACKET (N)	TO REPAIR SEE LABOUR	502.40	-
	LESS 10% DISCOUNT		-764.83	-240.40
			6,883.47	2,163.55
<b><u>SPECIAL NETT ITEMS</u></b>				
2	ENGINE MOUNTING (SN)	TORN	183.20	183.20
1	RADIATOR (SN)	BENT / CRACKED	792.90	792.90
1	RADIATOR FAN CLUTCH (SN)	JAMMED	533.00	533.00
2	RADIATOR MOTOR COWLING (SN)	CRACKED	173.80	173.80
1	RADIATOR FAN BLADE (SN)	CRACKED	260.90	260.90
1	GEARBOX MOUNTING (SN)	TORN	97.90	97.90
1	AIRCON LIQUID PIPE (DENTED) (SN)	NOT CONSISTENT WITH THE IMPACT	229.50	-
1	AIRCON DISCHARGE PIPE (SN)	NOT NECESSARY	249.50	-
1	FRT WINDSCREEN GUM (SN)	NOT NECESSARY	60.00	-
1	NUMBER PLATE (BROKEN) (SN)	NOT CONSISTENT WITH THE IMPACT	25.00	-

Report Ref No. CC4/FCI20002678/Uda3q2



## LKK Auto Consultants Pte Ltd

51 Ubi Ave 1 #01-25 Paya Ubi Industrial Park, Singapore 408933

TEL: 6256 3561 FAX: 6256 4315

Reg. No: 199607198R GST Reg. No. 19-9607198-R

Page No.:2 of 2

Qty	Description of Parts	Condition	Estimate By Workshop (\$)	Our Adjusted (\$)
1	RADIATOR COOLANTS (SN)	NECESSARY	20.00	20.00
1	FRT RH DOOR COMPANY SRICKER (SN)	NECESSARY	20.00	20.00
1	FRT RH DOOR COMPANY ADVERTISEMENT STICKER (SN) (ADDITIONAL)	NECESSARY	180.00	180.00
			2,825.70	2,261.70
	<b><u>LABOUR</u></b>			
	WIRE CHECKING.		30.00	20.00
	REMOVE & REFIX FRT WINDSCREEN .	NOT NECESSARY	120.00	-
	REMOVE & REFIX DASHBOARD .	NOT NECESSARY	250.00	-
	REMOVE & REFIX 1 SET ENGINE MOUNTING.		180.00	50.00
	LABOUR CHARGE.INCLUSIVE OF THE REPAIR OF FRT RH DOOR PILLAR AND FRT CABIN BRACKET .		1,000.00	600.00
	SPRAY PAINTING.		900.00	600.00
	REPAIR WIRE HARNESS AND REPLACE SOCKETS. (ADDITIONAL)	NOT NECESSARY	150.00	-
			2,630.00	1,270.00
	<b>GRAND TOTAL</b>		<b>12,339.17</b>	<b>5,695.25</b>
	<b>RECOMMENDED COST OF LUMP SUM REPAIRS (TO ITS PRE-ACCIDENT CONDITION)</b>			<b>4,550.00</b>

Report Ref No. CC4/FCI20002678/Uda3q2

CHUA KANG SENG

Licensed Appraiser

DISCLAIMER OF LIABILITY TO THIRD PARTIES:- This Report is made solely for the use and benefit of the Client named on the front page of this Report.

No liability of responsibility whatsoever, in contract or tort, is accepted to any third party who may rely on the Report wholly or in part. Any third party acting or replying on this Report, in whole or in part, does so at his or her own risk.



## LKK Auto Consultants Pte Ltd

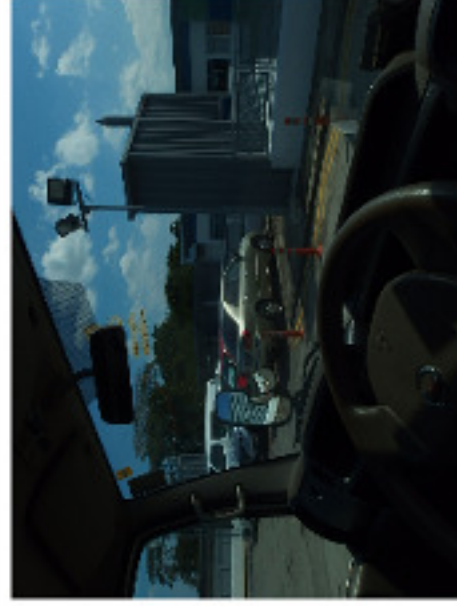
51 Ubi Ave 1 #01-25 Paya Ubi Industrial Park, Singapore 408933

TEL: 6256 3581 FAX: 6256 4315

Reg. No: 199607198R GST Reg. No. 19-9607198-R

PHOTOGRAPHS FOR VEHICLE NO. GBC 3368E

INSPECTION







## LKK Auto Consultants Pte Ltd

S1 Ubi Ave 1 #01-25 Paya Ubi Industrial Park, Singapore 408933

TEL: 6256 3551 FAX: 6256 4315

Reg No: 199607198R GST Reg. No. 19-9607198-R



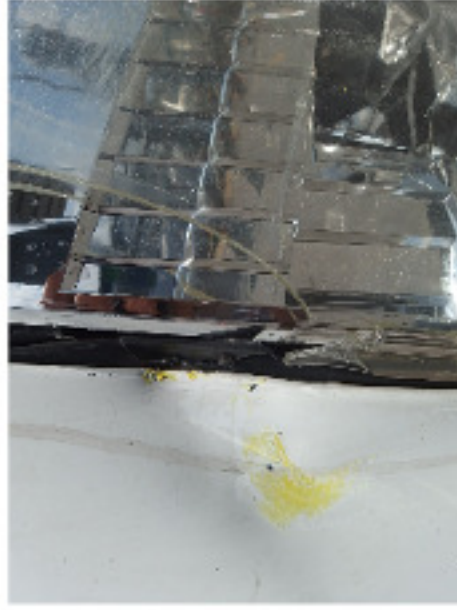


## LKK Auto Consultants Pte Ltd

S1 Ubi Ave 1 #01-25 Paya Ubi Industrial Park, Singapore 408933

TEL: 6256 3551 FAX: 6256 4315

Reg No: 199607198R GST Reg. No. 19-9607198-R







## LKK Auto Consultants Pte Ltd

S1 Ubi Ave 1 #01-25 Paya Ubi Industrial Park, Singapore 408933

TEL: 6256 3581 FAX: 6256 4315

Reg. No: 199607198R GST Reg. No. 19-9607198-R







## LKK Auto Consultants Pte Ltd

S1 Ubi Ave 1 #01-25 Paya Ubi Industrial Park, Singapore 408933

TEL: 6256 3581 FAX: 6256 4315

Reg. No: 199607198R GST Reg. No. 19-9607198-R





## LKK Auto Consultants Pte Ltd

S1 Ubi Ave 1 #01-25 Paya Ubi Industrial Park, Singapore 408933

TEL: 6256 3581 FAX: 6256 4315

Reg. No: 199607198R GST Reg. No. 19-9607198-R







## LKK Auto Consultants Pte Ltd

S1 Ubi Ave 1 #01-25 Paya Ubi Industrial Park, Singapore 408933

TEL: 6256 3581 FAX: 6256 4315

Reg. No: 199607198R GST Reg. No. 19-9607198-R







## LKK Auto Consultants Pte Ltd

S1 Ubi Ave 1 #01-25 Paya Ubi Industrial Park, Singapore 408933

TEL: 6256 3581 FAX: 6256 4315

Reg. No: 199607198R GST Reg. No. 19-9607198-R





## LKK Auto Consultants Pte Ltd

S1 Ubi Ave 1 #01-25 Paya Ubi Industrial Park, Singapore 408933

TEL: 6256 3551 FAX: 6256 4315

Reg No: 199607198R GST Reg. No. 19-9607198-R







## LKK Auto Consultants Pte Ltd

51 Ubi Ave 1 #01-25 Paya Ubi Industrial Park, Singapore 408933

TEL: 6256 3581 FAX: 6256 4315

Reg. No: 199607198R GST Reg. No. 19-9607198-R







## LKK Auto Consultants Pte Ltd

S1 Ubi Ave 1 #01-25 Paya Ubi Industrial Park, Singapore 408933

TEL: 6256 3581 FAX: 6256 4315

Reg. No: 199607198R GST Reg. No. 19-9607198-R





## LKK Auto Consultants Pte Ltd

S1 Ubi Ave 1 #01-25 Paya Ubi Industrial Park, Singapore 408933

TEL: 6256 3551 FAX: 6256 4315

Reg. No: 199607198R GST Reg. No. 19-9607198-R







## LKK Auto Consultants Pte Ltd

S1 Ubi Ave 1 #01-25 Paya Ubi Industrial Park, Singapore 408933

TEL: 6256 3581 FAX: 6256 4315

Reg. No: 199607198R GST Reg. No. 19-9607198-R







## LKK Auto Consultants Pte Ltd

S1 Ubi Ave 1 #01-25 Paya Ubi Industrial Park, Singapore 408933

TEL: 6256 3551 FAX: 6256 4315

Reg. No: 199607198R GST Reg. No. 19-9607198-R





## LKK Auto Consultants Pte Ltd

S1 Ubi Ave 1 #01-25 Paya Ubi Industrial Park, Singapore 408933

TEL: 6256 3551 FAX: 6256 4315

Reg. No: 199607198R GST Reg. No. 19-9607198-R







## LKK Auto Consultants Pte Ltd

51 Ubi Ave 1 #01-25 Paya Ubi Industrial Park, Singapore 408933

TEL: 6256 3581 FAX: 6256 4315

Reg. No: 199607198R GST Reg. No. 19-9607198-R

PHOTOGRAPHS FOR VEHICLE NO. GBC 3368E

RE-INSPECTION







## LKK Auto Consultants Pte Ltd

51 Ubi Ave 1 #01-25 Paya Ubi Industrial Park, Singapore 408933

TEL: 6256 3551 FAX: 6256 4315

Reg. No: 199607198R GST Reg. No. 19-9607198-R





## LKK Auto Consultants Pte Ltd

S1 Ubi Ave 1 #01-25 Paya Ubi Industrial Park, Singapore 408933

TEL: 6256 3551 FAX: 6256 4315

Reg. No: 199607198R GST Reg. No. 19-9607198-R







## LKK Auto Consultants Pte Ltd

S1 Ubi Ave 1 #01-25 Paya Ubi Industrial Park, Singapore 408933

TEL: 6256 3551 FAX: 6256 4315

Reg. No: 199607198R GST Reg. No. 19-9607198-R





## LKK Auto Consultants Pte Ltd

S1 Ubi Ave 1 #01-25 Paya Ubi Industrial Park, Singapore 408933

TEL: 6256 3581 FAX: 6256 4315

Reg. No: 199607198R GST Reg. No. 19-9607198-R

PHOTOGRAPHS FOR VEHICLE NO. GBC 3368E

RE-INSPECTION







## LKK Auto Consultants Pte Ltd

51 Ubi Ave 1 #01-25 Paya Ubi Industrial Park, Singapore 408933

TEL: 6256 3551 FAX: 6256 4315

Reg. No: 199607198R GST Reg. No. 19-9607198-R





## LKK Auto Consultants Pte Ltd

S1 Ubi Ave 1 #01-25 Paya Ubi Industrial Park, Singapore 408933

TEL: 6256 3551 FAX: 6256 4315

Reg. No: 199607198R GST Reg. No. 19-9607198-R







## LKK Auto Consultants Pte Ltd

S1 Ubi Ave 1 #01-25 Paya Ubi Industrial Park, Singapore 408933

TEL: 6256 3551 FAX: 6256 4315

Reg. No: 199607198R GST Reg. No. 19-9607198-R





## LKK Auto Consultants Pte Ltd

S1 Ubi Ave 1 #01-25 Paya Ubi Industrial Park, Singapore 408933

TEL: 6256 3551 FAX: 6256 4315

Reg No: 199607198R GST Reg. No. 19-9607198-R

