



LKK Auto Consultants Pte Ltd

51 Ubi Ave 1 #01-25 Paya Ubi Industrial Park, Singapore 408933

TEL: 6256 3561 FAX: 6256 4315

Reg. No: 199607198R GST Reg. No. 19-9607198-R

TAX INVOICE

QBE INSURANCE (SINGAPORE) PTE LTD
1 RAFFLES QUAY #29-10 SOUTH TOWER
SINGAPORE 048583

INV No. AC2005786
INV Date 24/08/2020
Reference CC3/QBE20002052/Qka3s2
Code QBE



PROFESSIONAL SERVICE FEE

Vehicle No. SHC 4325B
Insured Veh. YN 7127C
Claim No. VC013425
Policy No. 8-V0023776-MVA
Accident Date 31/01/2020
Inspection Date 03/02/2020

Description	Total
Third Party Express Settlement	400.00
Subtotal	400.00
GST (7%)	28.00
Grand Total	428.00

We shall be glad if you could forward the payment at your early convenience.

Cheque should be crossed and made payable to 'LKK Auto Consultants Pte Ltd'

LKK Auto Consultants Pte Ltd



LKK Auto Consultants Pte Ltd

51 Ubi Ave 1 #01-25 Paya Ubi Industrial Park, Singapore 408933

TEL: 6256 3561 FAX: 6256 4315

Reg. No: 199607198R GST Reg. No. 19-9607198-R

Affiliated to Federation Internationale Des Experts En Automobile

QBE INSURANCE (SINGAPORE) PTE LTD

Ref : CC3/QBE20002052/Qka3s2

1 RAFFLES QUAY #29-10 SOUTH
TOWERSINGAPORE 048583

Date : 24-08-2020



Code : QBE

1. Policy Particulars :- THIRD PARTY CLAIM

Insured Veh.	YN 7127C	Veh. Inspected	SHC 4325B
Policy No.	8-V0023776-MVA	Coverage (\$)	0.00
Claim No.	VC013425	Excess (\$)	0.00
Assign From		Assign Date	03/02/2020

2. Vehicle Particulars & Condition

Make & Model	TOYOTA PRIUS	c.c	1798
Engine No.	HIDDEN	Year of Reg.	2017
Chassis No.	JTDKB3FU603576222	Colour	MAROON
Odometer	287008	Steering	IN ORDER
Brakes	IN ORDER	Modification	SPORTS RIM
General	FAIR		

3. Conditions of Tyres

	Size	Make	Balance
R/H Front Tyre	195/65 R15	WEST LAKE	5 mm
L/H Front Tyre	195/65 R15	WEST LAKE	5 mm
R/H Rear Tyre	195/65 R15	WEST LAKE	5 mm
L/H Rear Tyre	195/65 R15	WEST LAKE	5 mm

4. Description of Damages

THE VEHICLE SUSTAINED DAMAGES AT THE O/S AND N/S BODY. DAMAGES SEE DETAILS.
--

5. General Information

Accident Date	31/01/2020	Inspection Date	03/02/2020
Survey held at	SMRT AUTOMOTIVE SERVICES PTE LTD 60 WOODLANDS INDUSTRIAL PARK E4 SINGAPORE 757705		

5a. Remarks

A)THE INSPECTION WAS CONDUCTED ON A"WITHOUT PREJUDICE" BASIS. B)IN ACCORDANCE TO YOUR INSTRUCTIONS, WE HAVE NOT AUTHORISED REPAIRS.
--

5b. Estimate Days of Repair

ESTIMATED NORMAL PERIOD FOR REPAIR:	7 Working Days
-------------------------------------	----------------



LKK Auto Consultants Pte Ltd

51 Ubi Ave 1 #01-25 Paya Ubi Industrial Park, Singapore 408933

TEL: 6256 3561 FAX: 6256 4315

Reg. No: 199607198R GST Reg. No. 19-9607198-R

Page No.:1 of 4

ADJUSTMENT ON REPAIR COST FOR VEHICLE NO. SHC 4325B

Qty	Description of Parts	Condition	Estimate By Workshop (\$))	Our Adjusted (\$)
	REPLACEMENT OF PARTS			
1	FENDER SUB-ASSY, FR, LH (DISC 25%)	DENTED	933.10	699.83
1	EMBLEM, SIDE PANEL (HYBRID) (DISC 25%)	NECESSARY	52.90	39.68
1	COVER, OUTER MIRROR, RH (DISC 25%)	MISSING	89.50	67.13
1	MIRROR OUTER GLASS, RH (DISC 25%)	MISSING	215.20	161.40
1	COVER, OUTER MIRROR, LH (DISC 25%)	MISSING	89.50	67.13
1	DOOR OUTER HANDLE FRONT, LH (DISC 25%)	SCRATCHED	378.90	284.18
1	COVER SUB-ASSY, FRONT (DISC 25%)	MISSING	96.90	72.68
1	GLASS SUB-ASSY, FRONT (DISC 25%)	CRACKED	796.70	597.53
1	GLASS SUB-ASSY, REAR DOOR, LH (DISC 25%)	SCRATCHED	397.80	298.35
1	DOOR OUTER HANDLE REAR, LH (DISC 25%)	SCRATCHED	93.90	70.43
1	MIRROR ASSY, OUTER REAR VIEW, RH (DISC 10%)	CRUSHED	1,373.50	1,236.15
1	MIRROR ASSY, OUTER REAR VIEW, LH (DISC 10%)	MISSING	1,283.90	1,155.51
1	STICKER DECAL SMRT (DOOR) (SN)	NECESSARY	60.00	60.00
1	STICKER DECAL SMRT (DOOR) (SN)	NECESSARY	60.00	60.00
2	PIXEL STICKER @ \$60.00 (SN)	NECESSARY	120.00	120.00
1	FENDER SUB-ASSY, FR, RH	SERVICEABLE	933.10	-
1	EMBLEM, SIDE PANEL (HYBRID)	SERVICEABLE	52.90	-
1	LINER, FR FENDER, RH	SERVICEABLE	198.40	-
1	PED, FR WHEEL RH	SERVICEABLE	57.70	-
1	HOOD SUB-ASSY	SERVICEABLE	938.40	-
1	WHEEL, DISC	SERVICEABLE	1,555.10	-
1	TYRE	SERVICEABLE	126.74	-
1	GLASS SUB-ASSY, FRONT DOOR, RH	SERVICEABLE	796.70	-
1	GLASS, FRONT DOOR FIX WINDOW, RH	SERVICEABLE	309.90	-
1	WEATHERSTRIP, FRONT DOOR FIX WINDOW, RH	SERVICEABLE	74.30	-
1	RUN, FRONT DOOR GLASS, RH	SERVICEABLE	141.70	-
1	WEATHERSTRIP, FR RH	SERVICEABLE	126.10	-
1	FILLER, REAR DOOR GLASS CHANNEL	SERVICEABLE	27.20	-
1	FILLER, REAR DOOR GLASS CHANNEL	SERVICEABLE	14.30	-
1	TYRE	SERVICEABLE	126.74	-
1	FENDER SUB-ASSY, FR, LH	SERVICEABLE	933.10	-

Report Ref No. CC3/QBE20002052/Qka3s2



LKK Auto Consultants Pte Ltd

51 Ubi Ave 1 #01-25 Paya Ubi Industrial Park, Singapore 408933

TEL: 6256 3561 FAX: 6256 4315

Reg. No: 199607198R GST Reg. No. 19-9607198-R

Page No.:2 of 4

Qty	Description of Parts	Condition	Estimate By Workshop (\$))	Our Adjusted (\$)
1	LINER, FR FENDER, LH	SERVICEABLE	194.30	-
1	PAD, FR WHEEL LH	SERVICEABLE	57.70	-
1	WHEEL, DISC	SERVICEABLE	1,555.10	-
1	TYRE	SERVICEABLE	126.74	-
1	MOULDING, FRONT DOOR WINDOW FRAME, REAR LH	SERVICEABLE	54.70	-
1	GLASS, FRONT DOOR FIX WINDOW, LH	SERVICEABLE	309.90	-
1	RUN, FRONT DOOR GLASS, LH	SERVICEABLE	141.70	-
1	WEATHERSTRIP, FR LH	SERVICEABLE	126.10	-
1	WEATHERSTRIP, FRONT DOOR FIX WINDOW, LH	SERVICEABLE	74.30	-
1	MOULDING, REAR DOOR WINDOW FRAME, FRONT LH	SERVICEABLE	54.70	-
1	GLASS SUB-ASSY, REAR DOOR, LH	SERVICEABLE	397.80	-
1	GLASS, REAR DOOR QUARTER WINDOW, LH	SERVICEABLE	104.60	-
1	WEATHERSTRIP, REAR DOOR QUARTER WINDOW, LH	SERVICEABLE	47.70	-
1	WEATHERSTRIP, REAR DOOR GLASS, INNER LH	SERVICEABLE	94.80	-
1	WHEEL, DISC	SERVICEABLE	1,555.10	-
1	TYRE	SERVICEABLE	126.74	-
1	LID ASSY, FUEL FILLER OPENING	SERVICEABLE	164.10	-
1	SUPPORT, FR BUMPER RH	SERVICEABLE	76.90	-
1	SUPPORT, FR BUMPER LH	SERVICEABLE	82.30	-
1	COVER, FR BUMPER RH	SERVICEABLE	28.10	-
1	COVER, FR BUMPER LH	SERVICEABLE	28.10	-
10	CLIPS PIECE, FRT & RR BUMPER @ \$1.50	SERVICEABLE	15.00	-
1	RETAINER, FR BUMPER, LH & RH	SERVICEABLE	8.50	-
1	COVER ASSY, ENGINE	SERVICEABLE	180.10	-
1	COVER ASSY, ENGINE UNDER CENTER SET	SERVICEABLE	452.80	-
1	GRILLE SUB-ASSY	SERVICEABLE	335.60	-
1	COVER, RR BUMPER ASSY	SERVICEABLE	423.90	-
1	REAR BUMPER REINFORCEMENT	SERVICEABLE	318.80	-
1	SEAL, RR BUMPER ARM, RH & LH	SERVICEABLE	11.00	-
1	PAD, RR BUMPER, RH & LH	SERVICEABLE	3.80	-
1	PAD, RR BUMPER, RH & LH, 2	SERVICEABLE	3.80	-
1	PAD, RR BUMPER, RH & LH	SERVICEABLE	3.80	-
1	RETAINER, RR BUMPER, RH	SERVICEABLE	112.70	-

Report Ref No. CC3/QBE20002052/Qka3s2



LKK Auto Consultants Pte Ltd

51 Ubi Ave 1 #01-25 Paya Ubi Industrial Park, Singapore 408933

TEL: 6256 3561 FAX: 6256 4315

Reg. No: 199607198R GST Reg. No. 19-9607198-R

Page No.:3 of 4

Qty	Description of Parts	Condition	Estimate By Workshop (\$)	Our Adjusted (\$)
1	RETAINER, RR BUMPER, LH	SERVICEABLE	111.50	-
1	SEAL, RR BUMPER, RH	SERVICEABLE	85.20	-
1	SEAL, RR BUMPER, LH	SERVICEABLE	85.20	-
10	CLIPS PIECE, FRT & RR BUMPER @ \$1.50	SERVICEABLE	15.00	-
1	GUARD, RR BUMPER, LOWER	SERVICEABLE	558.30	-
1	FILLER, RR BUMPER, RH	SERVICEABLE	119.90	-
1	FILLER, RR BUMPER, LH	SERVICEABLE	119.90	-
1	SENSOR REVERSE	SERVICEABLE	180.00	-
1	COVER, REAR FLOOR UNDER, RH	SERVICEABLE	169.50	-
1	COVER, REAR FLOOR UNDER,	SERVICEABLE	234.30	-
1	COVER, REAR FLOOR UNDER CENTER	SERVICEABLE	222.60	-
1	ANTENNA, ELECTRICAL KEY	SERVICEABLE	60.30	-
1	LENS & BODY, REAR COMBINATION LAMP, RH	SERVICEABLE	438.10	-
1	LENS & BODY ASSY, RR BUMPER, RH	SERVICEABLE	486.80	-
1	LENS & BODY ASSY, RR BUMPER, LH	SERVICEABLE	486.80	-
1	MOULDING ASSY, BODY ROCKER PANEL, LH	NOT NECESSARY	576.00	-
1	MOULDING ASSY, BODY ROCKER PANEL, RH	TO REPAIR SEE LABOUR	576.00	-
1	PANEL SUB-ASSY, FRONT DOOR RH	TO REPAIR SEE LABOUR	1,249.60	-
1	PANEL SUB-ASSY, REAR DOOR, RH	TO REPAIR SEE LABOUR	1,243.90	-
1	PANEL SUB-ASSY, FENDER REAR RH	TO REPAIR SEE LABOUR	824.80	-
1	WHEEL, DISC	TO REPAIR SEE LABOUR	1,555.10	-
1	PANEL SUB-ASSY, FRONT DOOR LH	TO REPAIR SEE LABOUR	1,249.60	-
1	PANEL SUB-ASSY, REAR DOOR, LH	TO REPAIR SEE LABOUR	1,243.90	-
1	PANEL SUB-ASSY, FENDER REAR LH	TO REPAIR SEE LABOUR	824.80	-
1	COVER, FR BUMPER	TO REPAIR SEE LABOUR	495.50	-
2	SOLAR FILM (FL, RL) (SN)	NECESSARY	625.00	250.00
1	MOULDING, FRONT DOOR WINDOW FRAME, REAR (DISC 25%) (ADDITIONAL)	NECESSARY	54.70	41.03

Report Ref No. CC3/QBE20002052/Qka3s2



LKK Auto Consultants Pte Ltd

51 Ubi Ave 1 #01-25 Paya Ubi Industrial Park, Singapore 408933

TEL: 6256 3561 FAX: 6256 4315

Reg. No: 199607198R GST Reg. No. 19-9607198-R

Page No.:4 of 4

Qty	Description of Parts	Condition	Estimate By Workshop (\$)	Our Adjusted (\$)
1	MOULDING, REAR DOOR WINDOW FRAME, FRONT (DISC 25%) (ADDITIONAL)	NECESSARY	54.70	41.03
1	FRAME SUB-ASSY, FRONT DOOR, FRONT LOWER LH (DISC 25%) (ADDITIONAL)	NECESSARY	140.50	105.38
1	BAR SUB-ASSY, REAR DOOR WINDOW DIVISION, (DISC 25%) (ADDITIONAL)	NECESSARY	108.70	81.53
			33,921.66	5,508.97
	LABOUR			
	PANEL BEATING & BODYWORK. INCLUSIVE OF THE REPAIR OF MOULDING ASSY, BODY ROCKER PANEL, RH; PANEL SUB-ASSY, FRONT DOOR RH; PANEL SUB-ASSY, REAR DOOR, RH; PANEL SUB-ASSY, FENDER REAR RH; WHEEL, DISC; PANEL SUB-ASSY, FRONT DOOR LH; PANEL SUB-ASSY, REAR DOOR, LH; PANEL SUB-ASSY, FENDER REAR LH AND COVER, FR BUMPER. SPRAY PAINT.		1,183.00	700.00
	TOWING CHARGE.		56.00	40.00
	TO REMOVE AND REFIX WING MIRROR.		120.00	50.00
	TO REMOVE AND REFIT TYRE RIM (SPRAYING PURPOSE)		120.00	30.00
	TO APPLY RUST-PROOFING ON AFFECTED AREA.		100.00	30.00
	TO REPLACE SUNDRY PARTS.		100.00	20.00
	TO CHECK WIRING AND SYSTEM FUNCTION.		80.00	20.00
	TO WASH AND VACUUM.	NOT NECESSARY	60.00	-
	TO TEST AND REFIX REVERSE SENSOR SYSTEM.		120.00	30.00
	TO TRANSFER DOOR MECHANISM.	NOT NECESSARY	120.00	-
	TO DO WHEEL ALIGNMENT / TYRE BALANCING.		120.00	60.00
	TO REMOVE & REFIT REAR QUARTER GLASS LH.	NOT NECESSARY	120.00	-
			8,257.00	2,990.00
	GRAND TOTAL		42,178.66	8,498.97
	RECOMMENDED COST OF REPAIRS			8,498.97

Report Ref No. CC3/QBE20002052/Qka3s2

OI SUN PIN

Asst. Automotive Assessor

HO LEONG CHUAN

Automotive Assessor

DISCLAIMER OF LIABILITY TO THIRD PARTIES:- This Report is made solely for the use and benefit of the Client named on the front page of this Report.

No liability of responsibility whatsoever, in contract or tort, is accepted to any third party who may rely on the Report wholly or in part. Any third party acting or replying on this Report, in whole or in part, does so at his or her own risk.



LKK Auto Consultants Pte Ltd

51 Ubi Ave 1 #01-25 Paya Ubi Industrial Park, Singapore 408933

TEL: 6256 3561 FAX: 6256 4315

Reg. No: 199607198R GST Reg. No. 19-9607198-R

PHOTOGRAPHS FOR VEHICLE NO. SHC 4325B

INSPECTION





LKK Auto Consultants Pte Ltd

51 Ubi Ave 1 #01-25 Paya Ubi Industrial Park, Singapore 408933

TEL: 6256 3561 FAX: 6256 4315

Reg. No: 199607198R GST Reg. No. 19-9607198-R





LKK Auto Consultants Pte Ltd

51 Ubi Ave 1 #01-25 Paya Ubi Industrial Park, Singapore 408933

TEL: 6256 3561 FAX: 6256 4315

Reg. No: 199607198R GST Reg. No. 19-9607198-R





LKK Auto Consultants Pte Ltd

51 Ubi Ave 1 #01-25 Paya Ubi Industrial Park, Singapore 408933

TEL: 6256 3561 FAX: 6256 4315

Reg. No: 199607198R GST Reg. No. 19-9607198-R





LKK Auto Consultants Pte Ltd

51 Ubi Ave 1 #01-25 Paya Ubi Industrial Park, Singapore 408933

TEL: 6256 3561 FAX: 6256 4315

Reg. No: 199607198R GST Reg. No. 19-9607198-R





LKK Auto Consultants Pte Ltd

51 Ubi Ave 1 #01-25 Paya Ubi Industrial Park, Singapore 408933

TEL: 6256 3561 FAX: 6256 4315

Reg. No: 199607198R GST Reg. No. 19-9607198-R





LKK Auto Consultants Pte Ltd

51 Ubi Ave 1 #01-25 Paya Ubi Industrial Park, Singapore 408933

TEL: 6256 3561 FAX: 6256 4315

Reg. No: 199607198R GST Reg. No. 19-9607198-R





LKK Auto Consultants Pte Ltd

51 Ubi Ave 1 #01-25 Paya Ubi Industrial Park, Singapore 408933

TEL: 6256 3561 FAX: 6256 4315

Reg. No: 199607198R GST Reg. No. 19-9607198-R





LKK Auto Consultants Pte Ltd

51 Ubi Ave 1 #01-25 Paya Ubi Industrial Park, Singapore 408933

TEL: 6256 3561 FAX: 6256 4315

Reg. No: 199607198R GST Reg. No. 19-9607198-R



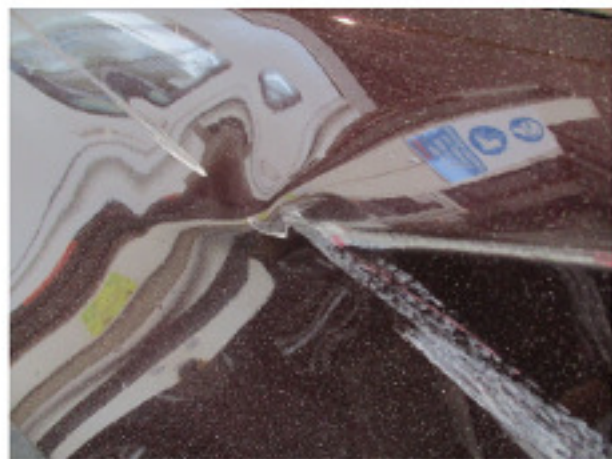


LKK Auto Consultants Pte Ltd

51 Ubi Ave 1 #01-25 Paya Ubi Industrial Park, Singapore 408933

TEL: 6256 3561 FAX: 6256 4315

Reg. No: 199607198R GST Reg. No. 19-9607198-R





LKK Auto Consultants Pte Ltd

51 Ubi Ave 1 #01-25 Paya Ubi Industrial Park, Singapore 408933

TEL: 6256 3561 FAX: 6256 4315

Reg. No: 199607198R GST Reg. No. 19-9607198-R





LKK Auto Consultants Pte Ltd

51 Ubi Ave 1 #01-25 Paya Ubi Industrial Park, Singapore 408933

TEL: 6256 3561 FAX: 6256 4315

Reg. No: 199607198R GST Reg. No. 19-9607198-R





LKK Auto Consultants Pte Ltd

51 Ubi Ave 1 #01-25 Paya Ubi Industrial Park, Singapore 408933

TEL: 6256 3561 FAX: 6256 4315

Reg. No: 199607198R GST Reg. No. 19-9607198-R





LKK Auto Consultants Pte Ltd

51 Ubi Ave 1 #01-25 Paya Ubi Industrial Park, Singapore 408933

TEL: 6256 3561 FAX: 6256 4315

Reg. No: 199607198R GST Reg. No. 19-9607198-R

PHOTOGRAPHS FOR VEHICLE NO. SHC 4325B

RE-INSPECTION



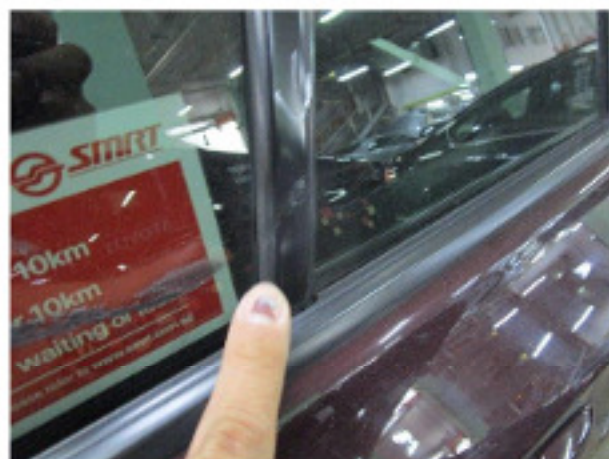


LKK Auto Consultants Pte Ltd

51 Ubi Ave 1 #01-25 Paya Ubi Industrial Park, Singapore 408933

TEL: 6256 3561 FAX: 6256 4315

Reg. No: 199607198R GST Reg. No. 19-9607198-R





LKK Auto Consultants Pte Ltd

51 Ubi Ave 1 #01-25 Paya Ubi Industrial Park, Singapore 408933

TEL: 6256 3561 FAX: 6256 4315

Reg. No: 199607198R GST Reg. No. 19-9607198-R





LKK Auto Consultants Pte Ltd

51 Ubi Ave 1 #01-25 Paya Ubi Industrial Park, Singapore 408933

TEL: 6256 3561 FAX: 6256 4315

Reg. No: 199607198R GST Reg. No. 19-9607198-R

