



LKK Auto Consultants Pte Ltd

51 Ubi Ave 1 #01-25 Paya Ubi Industrial Park, Singapore 408933

TEL: 6256 3561 FAX: 6256 4315

Reg. No: 199607198R GST Reg. No. 19-9607198-R

TAX INVOICE

CHINA TAIPING INSURANCE (S) PTE LTD
3 ANSON ROAD #16-00
SPRINGLEAF TOWER
SINGAPORE 079909

INV No. AC2006694
INV Date 28/09/2020
Reference CC3/CTI20000284/Kba3q2
Code CTI



PROFESSIONAL SERVICE FEE

Vehicle No. SHD 212P
Insured Veh. SGZ 6496T
Claim No. SNM20D200063
Policy No. DMPCSN3071521901
Accident Date 01/01/2020
Inspection Date 03/01/2020

| Description | Total |
|--------------------------------|---------------|
| Third Party Express Settlement | 400.00 |
| Subtotal | 400.00 |
| GST (7%) | 28.00 |
| Grand Total | 428.00 |

We shall be glad if you could forward the payment at your early convenience.

Cheque should be crossed and made payable to 'LKK Auto Consultants Pte Ltd'

LKK Auto Consultants Pte Ltd



LKK Auto Consultants Pte Ltd

51 Ubi Ave 1 #01-25 Paya Ubi Industrial Park, Singapore 408933

TEL: 6256 3561 FAX: 6256 4315

Reg. No: 199607198R GST Reg. No. 19-9607198-R

Affiliated to Federation Internationale Des Experts En Automobile

CHINA TAIPING INSURANCE (S) PTE LTD

Ref : CC3/CTI20000284/Kba3q2

3 ANSON ROAD #16-00
SPRINGLEAF TOWERS SINGAPORE 079909

Date : 28-09-2020



Code : CTI

1. Policy Particulars :- THIRD PARTY CLAIM

| | | | |
|--------------|------------------|----------------|------------|
| Insured Veh. | SGZ 6496T | Veh. Inspected | SHD 212P |
| Policy No. | DMPCSN3071521901 | Coverage (\$) | 0.00 |
| Claim No. | SNM20D200063 | Excess (\$) | 0.00 |
| Assign From | | Assign Date | 03/01/2020 |

2. Vehicle Particulars & Condition

| | | | |
|--------------|----------------------|--------------|----------------|
| Make & Model | RENAULT LATITUDE (A) | c.c | 1995 |
| Engine No. | HIDDEN | Year of Reg. | 2016 |
| Chassis No. | VF1ABL15AUC283196 | Colour | M.P WHITE /RED |
| Odometer | 427867 | Steering | IN ORDER |
| Brakes | IN ORDER | Modification | NIL |
| General | GOOD | | |

3. Conditions of Tyres

| | Size | Make | Balance |
|----------------|------------|--------|---------|
| R/H Front Tyre | 215/60 R16 | SAILUN | 9 mm |
| L/H Front Tyre | 215/60 R16 | SAILUN | 9 mm |
| R/H Rear Tyre | 215/60 R16 | SAILUN | 9 mm |
| L/H Rear Tyre | 215/60 R16 | SAILUN | 9 mm |

4. Description of Damages

| |
|---|
| THE VEHICLE SUSTAINED DAMAGES AT THE FRONT N/S PORTION. DAMAGES SEE DETAILS. |
|---|

5. General Information

| | | | |
|----------------|--|-----------------|------------|
| Accident Date | 01/01/2020 | Inspection Date | 03/01/2020 |
| Survey held at | TRANS-CAB AUTO SERVICES PTE LTD NO.2 ANG MO KIO ST 63 SINGAPORE 569111 | | |

5a. Remarks

| |
|--|
| A)THE INSPECTION WAS CONDUCTED ON A"WITHOUT PREJUDICE" BASIS. B)IN ACCORDANCE TO YOUR INSTRUCTIONS, WE HAVE NOT AUTHORISED REPAIRS. |
|--|

5b. Estimate Days of Repair

| | |
|-------------------------------------|-----------------------|
| ESTIMATED NORMAL PERIOD FOR REPAIR: | 2 Working Days |
|-------------------------------------|-----------------------|



LKK Auto Consultants Pte Ltd

51 Ubi Ave 1 #01-25 Paya Ubi Industrial Park, Singapore 408933

TEL: 6256 3561 FAX: 6256 4315

Reg. No: 199607198R GST Reg. No. 19-9607198-R

Page No.:1 of 5

ADJUSTMENT ON REPAIR COST FOR VEHICLE NO. SHD 212P

| Qty | Description of Parts | Condition | Estimate By Workshop (\$)) | Our Adjusted (\$) |
|-----|------------------------------------|----------------------|----------------------------|-------------------|
| | <u>REPLACEMENT OF PARTS</u> | | | |
| 1 | BUMPER COVER FRT | CRACKED | 747.20 | 747.20 |
| 1 | BUMPER SPOILER FRT | DISTORTED | 344.70 | 344.70 |
| 1 | BUMPER ABSORBER FRT | CRACKED | 394.68 | 394.68 |
| 1 | BUMPER RETAINER FRT LH | DISTORTED | 101.40 | 101.40 |
| 1 | BUMPER SUPPORT FRT | CRACKED | 10.70 | 10.70 |
| 1 | BUMPER RETAINER FRT RH | SERVICEABLE | 101.40 | - |
| 1 | BUMPER SUPPORT FRT | SERVICEABLE | 10.70 | - |
| 1 | BUMPER UNDERTRAY FRT | SERVICEABLE | 292.50 | - |
| 1 | BUMPER GRILLE LOWER FRT | SERVICEABLE | 147.00 | - |
| 1 | BUMPER FOG LAMP GRILLE LH | DISTORTED | 207.21 | 207.21 |
| 1 | BUMPER FOG LAMP GRILLE RH | SERVICEABLE | 207.21 | - |
| 1 | BUMPER BEAM FRT | BENT | 663.70 | 663.70 |
| 1 | TOW COVER FRT | SERVICEABLE | 60.90 | - |
| 1 | FRONT BRACE PANEL | TO REPAIR SEE LABOUR | 177.22 | - |
| 1 | RADIATOR GRILLE | SERVICEABLE | 969.90 | - |
| 1 | RADIATOR GRILLE BADGE 'RENAULT' | SERVICEABLE | 225.36 | - |
| 1 | RADIATOR GRILLE FRAME | SERVICEABLE | 686.00 | - |
| 1 | FRAME FULL SUPPORT PANEL | SERVICEABLE | 592.70 | - |
| 1 | FRAME FULL SUPPORT BRACKET | TO REPAIR SEE LABOUR | 41.60 | - |
| 1 | HEADLAMP LH | CRACKED | 743.60 | 743.60 |
| 1 | HEADLAMP RH | SERVICEABLE | 743.60 | - |
| 1 | HEADLAMP PANEL FRT LH | TO REPAIR SEE LABOUR | 127.70 | - |
| 1 | HEADLAMP PANEL FRT RH | TO REPAIR SEE LABOUR | 128.30 | - |
| 2 | HEADLAMP ADJUST MOTOR | SERVICEABLE | 313.90 | - |
| 1 | BONNET | TO REPAIR SEE LABOUR | 1,312.70 | - |
| 1 | BONNET INSULATOR | SERVICEABLE | 294.30 | - |
| 1 | BONNET STRUT LH | SERVICEABLE | 53.30 | - |

Report Ref No. CC3/CTI20000284/Kba3q2



LKK Auto Consultants Pte Ltd

51 Ubi Ave 1 #01-25 Paya Ubi Industrial Park, Singapore 408933

TEL: 6256 3561 FAX: 6256 4315

Reg. No: 199607198R GST Reg. No. 19-9607198-R

Page No.:2 of 5

| Qty | Description of Parts | Condition | Estimate By Workshop (\$)) | Our Adjusted (\$) |
|-----|-------------------------------------|----------------------|----------------------------|-------------------|
| 1 | BONNET STRUT RH | SERVICEABLE | 53.30 | - |
| 1 | BONNET HINGE LH | TO REPAIR SEE LABOUR | 236.50 | - |
| 1 | BONNET HINGE RH | TO REPAIR SEE LABOUR | 237.40 | - |
| 1 | BONNET LOCK | TO REPAIR SEE LABOUR | 152.80 | - |
| 1 | BONNET CABLE | SERVICEABLE | 55.20 | - |
| 1 | BONNET CABLE COVER | SERVICEABLE | 80.60 | - |
| 1 | BONNET SEAL OUTER | SERVICEABLE | 83.20 | - |
| 1 | BONNET SEAL INNER | SERVICEABLE | 70.10 | - |
| 1 | FENDER PANEL FRT LH | TO REPAIR SEE LABOUR | 414.40 | - |
| 1 | WHEELARCH FRT LH | SERVICEABLE | 112.30 | - |
| 1 | FENDER BRACKET LOWER LH | SERVICEABLE | 11.80 | - |
| 1 | FENDER BRACKET FRT LH | SERVICEABLE | 38.90 | - |
| 1 | FENDER INSULATOR LH | SERVICEABLE | 65.50 | - |
| 1 | FENDER PANEL FRT RH | TO REPAIR SEE LABOUR | 437.10 | - |
| 1 | WHEELARCH FRT RH | SERVICEABLE | 191.40 | - |
| 1 | FENDER BRACKET LOWER RH | SERVICEABLE | 11.80 | - |
| 1 | FENDER BRACKET FRT RH | SERVICEABLE | 106.40 | - |
| 1 | FENDER INSULATOR RH | SERVICEABLE | 66.30 | - |
| 1 | WIPER RESERVOIR | SERVICEABLE | 179.60 | - |
| 1 | WIPER RESERVOIR NECK | SERVICEABLE | 29.30 | - |
| 1 | WIPER RESERVOIR MOTOR | SERVICEABLE | 82.60 | - |
| 1 | AIR CLEANER BOX | SERVICEABLE | 464.20 | - |
| 1 | AIR CLEANER HOSE | SERVICEABLE | 175.85 | - |
| 1 | AIR CLEANER LOWER | CRACKED | 271.26 | 271.26 |
| 1 | AUTO COMPUTER | SERVICEABLE | 1,287.30 | - |
| 1 | INJECTION COMPUTER | SERVICEABLE | 2,706.30 | - |
| 1 | RHD HYDRAULIC POWER (ROCK & PINION) | SERVICEABLE | 3,765.30 | - |
| 1 | STEERING PUMP ELECTRIC L70Y | SERVICEABLE | 2,026.70 | - |
| 1 | STEERING PINION RACK L70Y | SERVICEABLE | 3,765.30 | - |
| 1 | SUBFRAME OUTER FRT | SERVICEABLE | 1,094.20 | - |

Report Ref No. CC3/CTI20000284/Kba3q2



LKK Auto Consultants Pte Ltd

51 Ubi Ave 1 #01-25 Paya Ubi Industrial Park, Singapore 408933

TEL: 6256 3561 FAX: 6256 4315

Reg. No: 199607198R GST Reg. No. 19-9607198-R

Page No.:3 of 5

| Qty | Description of Parts | Condition | Estimate By Workshop (\$)) | Our Adjusted (\$) |
|-----|--|----------------------|----------------------------|-------------------|
| 1 | SUBFRAME BRACKET OUTER LH | TO REPAIR SEE LABOUR | 49.00 | - |
| 1 | SUBFRAME BRACKET OUTER RH | TO REPAIR SEE LABOUR | 49.00 | - |
| 1 | A/C CONDENSER | SERVICEABLE | 1,537.80 | - |
| 1 | LOWER ARM LH L70Y | SERVICEABLE | 192.70 | - |
| 1 | KNUCKLE LH L70Y | SERVICEABLE | 481.50 | - |
| 1 | ABSORBER FRT LH L70Y | SERVICEABLE | 274.10 | - |
| 1 | DRIVESHAFT LH | TO REPAIR SEE LABOUR | 1,355.70 | - |
| 1 | STABILIZER BAR FRT | SERVICEABLE | 427.90 | - |
| | LESS 10% DISCOUNT | | -3,234.01 | -348.45 |
| | | | 29,106.08 | 3,136.00 |
| | <u>SPECIAL NETT ITEMS</u> | | | |
| 1 | SET RADIATOR GRILLE FRAME CLIP (SN) | NOT NECESSARY | 52.00 | - |
| 1 | SET BUMPER CLIP FRT (SN) | NECESSARY | 66.00 | 66.00 |
| 1 | SET BUMPER BRACKET CLIP FRT LH (SN) | NOT NECESSARY | 12.00 | - |
| 1 | BUMPER SUPPORT CLIP FRT LH (SN) | NOT NECESSARY | 10.50 | - |
| 1 | BUMPER BRACKET CLIP FRT RH (SN) | NOT NECESSARY | 12.00 | - |
| 1 | BUMPER SUPPORT CLIP FRT RH (SN) | NOT NECESSARY | 10.50 | - |
| 1 | RADIATOR GRILLE SCREW | NOT NECESSARY | 16.00 | - |
| 1 | SET BUMPER GRILLE LOWER CLIP (SN) | NOT NECESSARY | 69.00 | - |
| 1 | SET FRAME FULL SUPPORT PANEL CLIP (SN) | NOT NECESSARY | 70.00 | - |
| 1 | SET FRAME FULL SUPPORT PANEL NUT (SN) | NOT NECESSARY | 20.00 | - |
| 2 | FRAME FULL SUPPORT PANEL STUD (SN) | NOT NECESSARY | 30.00 | - |
| 1 | FRONT RIGHT TYRE (SN) | SERVICEABLE | 300.00 | - |
| 1 | FRONT RIGHT TYRE RIM (SN) | SERVICEABLE | 380.00 | - |
| 1 | FRONT LEFT TYRE (SN) | SERVICEABLE | 300.00 | - |
| 1 | FRONT LEFT TYRE RIM (SN) | SERVICEABLE | 380.00 | - |
| 1 | FRONT LICENCE PLATE WITH HOLDER (SN) | SERVICEABLE | 80.00 | - |
| 1 | SET WHEELARCH CLIP FRT LH (SN) | NOT NECESSARY | 30.50 | - |
| 1 | SET WHEELARCH CLIP FRT RH (SN) | NOT NECESSARY | 30.50 | - |
| 6 | BONNET INSULATOR CLIP L70Y (SN) | NOT NECESSARY | 7.30 | - |
| 2 | BONNET CABLE COVER SCREW L70Y (SN) | NOT NECESSARY | 10.85 | - |

Report Ref No. CC3/CTI20000284/Kba3q2



LKK Auto Consultants Pte Ltd

51 Ubi Ave 1 #01-25 Paya Ubi Industrial Park, Singapore 408933

TEL: 6256 3561 FAX: 6256 4315

Reg. No: 199607198R GST Reg. No. 19-9607198-R

Page No.:4 of 5

| Qty | Description of Parts | Condition | Estimate By Workshop (\$) | Our Adjusted (\$) |
|-----|---|---------------|---------------------------|-------------------|
| 2 | BONNET CABLE CLIP L70Y (SN) | NOT NECESSARY | 6.31 | - |
| | | | 1,893.46 | 66.00 |
| | LABOUR | | | |
| | TO CHECK STEERING GEOMETRY AND COMPUTER WHEEL ALIGNMENT. | NOT NECESSARY | 220.00 | - |
| | TO RUST-PROOFING OF THE AFFECTED AREAS. | NOT NECESSARY | 170.00 | - |
| | TO REMOVE AND REFIT INTERIOR FITTINGS,TRIMINGS,GARNISH, FITTINGS AND OTHER,TO ENABLE REPAIR. | NOT NECESSARY | 380.00 | - |
| | PANEL BEATING,KNOCKING AND STRAIGHTENING THE NECESSARY PORTION,REMOVE AND RENEWAL OF PARTS,ADJUST AND REALIGN THE SAME.INCLUSIVE OF THE REPAIR OF FRONT BRACE PANEL,FRAME FULL SUPPORT BRACKET,HEADLAMP PANEL FRT LH,HEADLAMP PANEL FRT RH,BONNET,BONNET HINGE LH,BONNET HINGE RH,BONNET LOCK,FENDER PANEL FRT LH,FENDER PANEL FRT RH,} | | 7,500.00 | 300.00 |
| | SUBFRAME BRACKET OUTER LH,SUBFRAME BRACKET OUTER RH AND DRIVESHAFT LH.} | | - | - |
| | LABOUR CHARGE TO MOUNT AND DISMOUNT VEHICLE ON JIG BENCH ,TO FACILITATE REPAIR. | NOT NECESSARY | 380.00 | - |
| | TO TRANSFER OF FRONT FENDER FITTINGS,ATTACHMENTS AND PERFORM WATER SEEPAGE TEST. | NOT NECESSARY | 170.00 | - |
| | TO TRANSFER OF TIRE ,RIM AND ON WHEEL BALANCING. | NOT NECESSARY | 170.00 | - |
| | TO TRANSFER OF BONNET FITTINGS,ATTACHMENTS AND PERFORM WATER SEEPAGE TEST. | NOT NECESSARY | 170.00 | - |
| | TO VACUUM ,REPLACE ,REFIX AND RECHARGE AIR CONDENSER . | NOT NECESSARY | 380.00 | - |
| | TO DISMANTLE AND REFIT AIRCON ASSY AND ATTACHMENT,VACUUM AND CHARGE -IN-GAS. | NOT NECESSARY | 380.00 | - |
| | TO TRANSFER OF FRONT BUMPER FITTINGS,ATTACHMENTS AND PERFORM WATER SEEPAGE TEST. | NOT NECESSARY | 170.00 | - |
| | TO DISMANTLE AND REFIT FRONT AND END SUSPENSION ,UNDERCARRIAGE PARTS ,FINAL CHECKING AND TESTING. | NOT NECESSARY | 380.00 | - |
| | TO REMOVE AND RENEW POWER STEERING PUMP ,OIL COOLER PIPE AND FINAL CHECKING AND TESTING. | NOT NECESSARY | 440.00 | - |

Report Ref No. CC3/CTI20000284/Kba3q2



LKK Auto Consultants Pte Ltd

51 Ubi Ave 1 #01-25 Paya Ubi Industrial Park, Singapore 408933

TEL: 6256 3561 FAX: 6256 4315

Reg. No: 199607198R GST Reg. No. 19-9607198-R

Page No.:5 of 5

| Qty | Description of Parts | Condition | Estimate By Workshop (\$) | Our Adjusted (\$) |
|---|--|---------------|---------------------------|-------------------|
| | TO CHECK ABS AND BRAKE EFFICIENCY ,FINAL CHECKING AND TESTING. | NOT NECESSARY | 380.00 | - |
| | PUTTY AND SPRAY PAINTING OF THE AFFECTED PORTION . | | 7,500.00 | 440.00 |
| | TO CHECK ELECTRICAL LIGHTING CONCERNED. | | 170.00 | 20.00 |
| | | | 18,960.00 | 760.00 |
| GRAND TOTAL | | | 49,959.54 | 3,962.00 |
| RECOMMENDED COST OF LUMP SUM REPAIRS (TO ITS PRE-ACCIDENT CONDITION) | | | | 3,150.00 |

Report Ref No. CC3/CTI20000284/Kba3q2

KONG SENG CHEONG

Licensed Appraiser

DISCLAIMER OF LIABILITY TO THIRD PARTIES:- This Report is made solely for the use and benefit of the Client named on the front page of this Report.

No liability of responsibility whatsoever, in contract or tort, is accepted to any third party who may rely on the Report wholly or in part. Any third party acting or replying on this Report, in whole or in part, does so at his or her own risk.



LKK Auto Consultants Pte Ltd

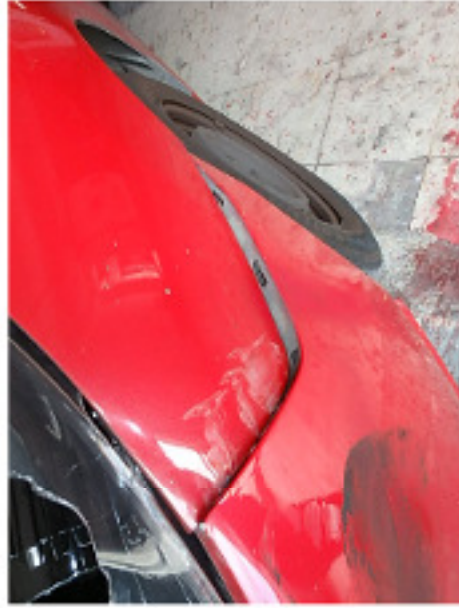
51 Ubi Ave 1 #01-25 Paya Ubi Industrial Park, Singapore 408933

TEL: 6256 3551 FAX: 6256 4315

Reg. No: 199607198R GST Reg. No. 19-9607198-R

PHOTOGRAPHS FOR VEHICLE NO. SHD 212P

INSPECTION





LKK Auto Consultants Pte Ltd

S1 Ubi Ave 1 #01-25 Paya Ubi Industrial Park, Singapore 408933

TEL: 6256 3551 FAX: 6256 4315

Reg No: 199607198R GST Reg. No. 19-9607198-R





LKK Auto Consultants Pte Ltd

S1 Ubi Ave 1 #01-25 Paya Ubi Industrial Park, Singapore 408933

TEL: 6256 3551 FAX: 6256 4315

Reg. No: 199607198R GST Reg. No. 19-9607198-R

