



LKK Auto Consultants Pte Ltd

51 Ubi Ave 1 #01-25 Paya Ubi Industrial Park, Singapore 408933

TEL: 6256 3561 FAX: 6256 4315

Reg. No: 199607198R GST Reg. No. 19-9607198-R

TAX INVOICE

LONPAC INSURANCE BHD
300 BEACH ROAD
#17-04/07 THE CONCOURSE
SINGAPORE 199555

INV No. AC2007385
INV Date 04/11/2020
Reference CC3/LPC20000177/Kda3q2
Code LPC2



PROFESSIONAL SERVICE FEE

Vehicle No. SHC 5927H
Insured Veh. SJD 9L
Claim No. 19/19/20/VP05/022928
Policy No. Z19VP05025000
Accident Date 30/12/2019
Inspection Date 02/01/2020

Description	Total
Third Party Express Settlement	400.00
Subtotal	400.00
GST (7%)	28.00
Grand Total	428.00

We shall be glad if you could forward the payment at your early convenience.

Cheque should be crossed and made payable to 'LKK Auto Consultants Pte Ltd'

LKK Auto Consultants Pte Ltd




LKK Auto Consultants Pte Ltd

51 Ubi Ave 1 #01-25 Paya Ubi Industrial Park, Singapore 408933

TEL: 6256 3561 FAX: 6256 4315

Reg. No: 199607198R GST Reg. No. 19-9607198-R

Affiliated to Federation Internationale Des Experts En Automobile				
LONPAC INSURANCE BHD			Ref : CC3/LPC20000177/Kda3q2	
300 BEACH ROAD #17-04/07 THE CONCOURSESINGAPORE 199555			Date : 04-11-2020	
			Code : LPC2	
1. Policy Particulars :- THIRD PARTY CLAIM				
	Insured Veh.	SJD 9L	Veh. Inspected	SHC 5927H
	Policy No.	Z19VP05025000	Coverage (\$)	0.00
	Claim No.	19/19/20/VP05/022928	Excess (\$)	0.00
	Assign From		Assign Date	02/01/2020
2. Vehicle Particulars & Condition				
	Make & Model	RENAULT LATITUDE (A)	c.c	1995
	Engine No.	HIDDEN	Year of Reg.	2014
	Chassis No.	VF1ABL15AUC281162	Colour	METALLIC WHITE / RED
	Odometer	540670	Steering	IN ORDER
	Brakes	IN ORDER	Modification	NIL
	General	GOOD		
3. Conditions of Tyres				
		Size	Make	Balance
	R/H Front Tyre	215/60 R16	SAILUN	9 mm
	L/H Front Tyre	215/60 R16	SAILUN	9 mm
	R/H Rear Tyre	215/60 R16	SAILUN	9 mm
	L/H Rear Tyre	215/60 R16	SAILUN	9 mm
4. Description of Damages				
	THE VEHICLE SUSTAINED DAMAGES AT THE FRONT AND REAR PORTION. DAMAGES SEE DETAILS.			
5. General Information				
	Accident Date	30/12/2019	Inspection Date	02/01/2020
	Survey held at	TRANS-CAB AUTO SERVICES PTE LTD NO.2 ANG MO KIO ST 63 SINGAPORE 569111		
5a. Remarks				
	A)THE INSPECTION WAS CONDUCTED ON A"WITHOUT PREJUDICE" BASIS. B)IN ACCORDANCE TO YOUR INSTRUCTIONS, WE HAVE NOT AUTHORISED REPAIRS.			
5b. Estimate Days of Repair				
	ESTIMATED NORMAL PERIOD FOR REPAIR:		5 Working Days	



LKK Auto Consultants Pte Ltd

51 Ubi Ave 1 #01-25 Paya Ubi Industrial Park, Singapore 408933

TEL: 6256 3561 FAX: 6256 4315

Reg. No: 199607198R GST Reg. No. 19-9607198-R

Page No.:1 of 8

ADJUSTMENT ON REPAIR COST FOR VEHICLE NO. SHC 5927H

Qty	Description of Parts	Condition	Estimate By Workshop (\$))	Our Adjusted (\$)
	<u>REPLACEMENT OF PARTS</u>			
1	BUMPER COVER REAR	BUCKLED	561.70	561.70
1	BUMPER LOWER REAR	DENTED / CUT	411.90	411.90
1	BUMPER BRACKET CTR REAR	SERVICEABLE	98.10	-
1	BUMPER BRACKET SIDE RH REAR	SERVICEABLE	82.10	-
1	BUMPER RETAINER RH REAR	SERVICEABLE	59.80	-
1	BUMPER REFLECTOR RH	CRACKED	16.60	16.60
1	BUMPER BRACKET SIDE LH REAR	SERVICEABLE	80.80	-
1	BUMPER RETAINER LH REAR	SERVICEABLE	54.20	-
1	BUMPER REFLECTOR LH	SERVICEABLE	16.60	-
1	BUMPER BEAM REAR	TO REPAIR SEE LABOUR	547.80	-
1	BUMPER BEAM BRACKET LH REAR	TO REPAIR SEE LABOUR	114.50	-
1	BUMPER BEAM BRACKET RH REAR	TO REPAIR SEE LABOUR	100.90	-
1	BOOT REAR	TO REPAIR SEE LABOUR	1,677.20	-
1	BOOT FINISHER	SERVICEABLE	344.70	-
1	BOOT WEATHERSTRIP	SERVICEABLE	178.20	-
1	BOOT REFLECTOR LAMP LH	SERVICEABLE	277.70	-
1	BOOT REFLECTOR LAMP RH	SERVICEABLE	277.70	-
1	BOOT BADGE "RENAULT"	NOT NECESSARY	82.40	-
1	BOOT BADGE	NOT NECESSARY	95.80	-
1	BOOT STRUT LH	SERVICEABLE	145.10	-
1	BOOT STRUT RH	SERVICEABLE	145.10	-
1	BOOT HINGE LH	TO REPAIR SEE LABOUR	254.20	-
1	BOOT HINGE LH	TO REPAIR SEE LABOUR	253.80	-
1	BOOT INNER TRIM BOARD	SERVICEABLE	611.00	-
1	BOOT SWITCH	TO REPAIR SEE LABOUR	113.00	-
1	BOOT LOCK	TO REPAIR SEE LABOUR	246.60	-

Report Ref No. CC3/LPC20000177/Kda3q2



LKK Auto Consultants Pte Ltd

51 Ubi Ave 1 #01-25 Paya Ubi Industrial Park, Singapore 408933

TEL: 6256 3561 FAX: 6256 4315

Reg. No: 199607198R GST Reg. No. 19-9607198-R

Page No.:2 of 8

Qty	Description of Parts	Condition	Estimate By Workshop (\$))	Our Adjusted (\$)
1	BOOT LOCK CATCH	TO REPAIR SEE LABOUR	41.70	-
2	LICENCE PLATE LAMP	SERVICEABLE	26.30	-
2	BOOT RUBBER PLUG	SERVICEABLE	139.30	-
1	BOOT LOCK LINKAGE	SERVICEABLE	20.60	-
1	BOOT LOCK LINKAGE HOLDER	SERVICEABLE	99.50	-
1	TAILLAMP RH	SERVICEABLE	313.10	-
1	TAILLAMP PANEL RH	TO REPAIR SEE LABOUR	401.40	-
1	TAILLAMP LH	SERVICEABLE	401.40	-
1	TAILLAMP PANEL LH	TO REPAIR SEE LABOUR	401.40	-
1	OUTER PANEL REAR (END PANEL)	TO REPAIR SEE LABOUR	745.80	-
1	OUTER PANEL REAR (END PANEL) TRIM	SERVICEABLE	404.56	-
1	SPARE TYRE BOARD	SERVICEABLE	680.90	-
1	FENDER PANEL REAR RH	TO REPAIR SEE LABOUR	1,933.20	-
1	FENDER PANEL INNER TRIM REAR RH	SERVICEABLE	671.45	-
1	WHEELARCH REAR RH	SERVICEABLE	275.40	-
1	AIR VENT	SERVICEABLE	59.40	-
1	EXHAUST REAR	TO REPAIR SEE LABOUR	5,263.60	-
1	EXHAUST CAP REAR	SERVICEABLE	125.40	-
1	BUMPER COVER FRT	BUCKLED	747.20	747.20
1	BUMPER SPOILER FRT	SERVICEABLE	344.70	-
1	BUMPER ABSORBER FRT	CRACKED	394.68	394.68
1	BUMPER RETAINER FRT LH	SERVICEABLE	101.40	-
1	BUMPER SUPPORT FRT	SERVICEABLE	10.70	-
1	BUMPER RETAINER FRT RH	DISTORTED	101.40	101.40
1	BUMPER SUPPORT FRT	SERVICEABLE	10.70	-
1	BUMPER UNDERTRAY FRT	SERVICEABLE	292.50	-
1	BUMPER GRILLE LOWER FRT	SERVICEABLE	147.00	-
1	BUMPER FOG LAMP GRILLE LH	SERVICEABLE	207.21	-
1	BUMPER FOG LAMP GRILLE RH	SERVICEABLE	207.21	-

Report Ref No. CC3/LPC20000177/Kda3q2



LKK Auto Consultants Pte Ltd

51 Ubi Ave 1 #01-25 Paya Ubi Industrial Park, Singapore 408933

TEL: 6256 3561 FAX: 6256 4315

Reg. No: 199607198R GST Reg. No. 19-9607198-R

Page No.:3 of 8

Qty	Description of Parts	Condition	Estimate By Workshop (\$)	Our Adjusted (\$)
1	BUMPER BEAM FRT	TO REPAIR SEE LABOUR	663.70	-
1	TOW COVER FRT	SERVICEABLE	60.90	-
1	RADIATOR GRILLE	MTG CRACKED	969.90	969.90
1	RADIATOR GRILLE BADGE "RENAULT"	NECESSARY	225.36	225.36
1	RADIATOR GRILLE FRAME	CRACKED	686.00	686.00
1	FRAME FULL SUPPORT PANEL	CRACKED	592.70	592.70
1	FRAME FULL SUPPORT BRACKET	TO REPAIR SEE LABOUR	41.60	-
1	FRONT BRACE PANEL	TO REPAIR SEE LABOUR	177.22	-
1	HORN	SERVICEABLE	449.90	-
1	HORN BRACKET	TO REPAIR SEE LABOUR	21.90	-
1	HEADLAMP LH	MTG CRACKED	743.60	743.60
1	HEADLAMP RH	MTG CRACKED	743.60	743.60
1	HEADLAMP PANEL FRT LH	TO REPAIR SEE LABOUR	127.70	-
1	HEADLAMP PANEL FRT RH	TO REPAIR SEE LABOUR	128.30	-
1	BONNET	BUCKLED	1,312.70	1,312.70
1	BONNET INSULATOR	SERVICEABLE	294.30	-
1	BONNET STRUT LH	SERVICEABLE	53.30	-
1	BONNET STRUT RH	SERVICEABLE	53.30	-
1	BONNET HINGE LH	TO REPAIR SEE LABOUR	236.50	-
1	BONNET HINGE RH	TO REPAIR SEE LABOUR	237.40	-
1	BONNET LOCK	TO REPAIR SEE LABOUR	152.80	-
1	BONNET CABLE	SERVICEABLE	55.20	-
1	BONNET CABLE COVER	SERVICEABLE	80.60	-
1	BONNET SEAL OUTER	SERVICEABLE	83.20	-
1	BONNET SEAL INNER	SERVICEABLE	70.10	-
1	FENDER PANEL FRT LH	TO REPAIR SEE LABOUR	414.40	-
1	WHEELARCH FRT LH	SERVICEABLE	112.30	-

Report Ref No. CC3/LPC20000177/Kda3q2



LKK Auto Consultants Pte Ltd

51 Ubi Ave 1 #01-25 Paya Ubi Industrial Park, Singapore 408933

TEL: 6256 3561 FAX: 6256 4315

Reg. No: 199607198R GST Reg. No. 19-9607198-R

Page No.:4 of 8

Qty	Description of Parts	Condition	Estimate By Workshop (\$)	Our Adjusted (\$)
1	FENDER BRACKET FRT LH	SERVICEABLE	38.90	-
1	FENDER BRACKET LOWER LH	SERVICEABLE	11.80	-
1	FENDER INSULATOR LH	SERVICEABLE	65.50	-
1	FENDER INSULATOR RH	SERVICEABLE	66.30	-
1	FENDER PANEL FRT RH	TO REPAIR SEE LABOUR	437.10	-
1	WHEELARCH FRT RH	SERVICEABLE	191.40	-
1	FENDER BRACKET LOWER RH	SERVICEABLE	11.80	-
1	FENDER BRACKET FRT RH	SERVICEABLE	106.40	-
1	WIPER RESERVOIR	SERVICEABLE	179.60	-
1	WIPER RESERVOIR NECK	SERVICEABLE	29.30	-
1	WIPER RESERVOIR MOTOR	SERVICEABLE	82.60	-
1	AIR CLEANER LOWER	SERVICEABLE	271.26	-
1	AIR CLEANER HOSE	SERVICEABLE	76.14	-
1	AIR CLEANER BOX	SERVICEABLE	464.20	-
1	SUBFRAME OUTER FRT	SERVICEABLE	1,094.20	-
1	SUBFRAME BRACKET OUTER LH	SERVICEABLE	49.00	-
1	SUBFRAME BRACKET OUTER RH	SERVICEABLE	49.00	-
1	A/C CONDENSER	SERVICEABLE	1,537.80	-
1	A/C PIPE CONDENSER TO COMPRESSOR	SERVICEABLE	187.20	-
1	A/C PIPE CONDENSER TO EXPANSION VALVE	SERVICEABLE	380.20	-
1	A/C PIPE COMPRESSOR	SERVICEABLE	222.70	-
1	A/C PIPE	SERVICEABLE	486.50	-
1	AIR COOLER	SERVICEABLE	598.90	-
1	RADIATOR	SERVICEABLE	871.20	-
1	RADIATOR FAN COWLING L70Y	SERVICEABLE	417.00	-
1	RADIATOR FAN MOTOR LH L70Y	SERVICEABLE	826.70	-
1	RADIATOR FAN MOTOR RH L70Y	SERVICEABLE	821.20	-
1	TRANSMISSION COOLER L70Y	SERVICEABLE	1,219.30	-
	LESS 10% DISCOUNT		-4,099.83	-750.73
			36,898.46	6,756.61
	SPECIAL NETT ITEMS			
1	SET PARKING AID (SN)	SERVICEABLE	700.00	-

Report Ref No. CC3/LPC20000177/Kda3q2



LKK Auto Consultants Pte Ltd

51 Ubi Ave 1 #01-25 Paya Ubi Industrial Park, Singapore 408933

TEL: 6256 3561 FAX: 6256 4315

Reg. No: 199607198R GST Reg. No. 19-9607198-R

Page No.:5 of 8

Qty	Description of Parts	Condition	Estimate By Workshop (\$)	Our Adjusted (\$)
1	SET REAR BUMPER CLIP (SN)	NECESSARY	66.00	66.00
1	SET BUMPER BRACKET CTR CLIP (SN)	NECESSARY	33.00	33.00
1	SET BUMPER BRACKET SIDE CLIP RH RR (SN)	NOT NECESSARY	10.00	-
1	SET BUMPER RETAINER RH CLIP RR (SN)	NOT NECESSARY	20.00	-
1	SET BUMPER BRACKET SIDE CLIP LH RR (SN)	NOT NECESSARY	10.00	-
1	SET BUMPER RETAINER CLIP LH RR (SN)	NOT NECESSARY	20.00	-
1	SET BUMPER LOWER REAR RIVET (SN)	NOT NECESSARY	22.00	-
1	SET BUMPER LOWER REAR CLIP (SN)	NECESSARY	66.00	66.00
1	EXHAUST MOUNTING REAR (SN)	NOT NECESSARY	16.00	-
1	EXHAUST BRACKET REAR (SN)	NOT NECESSARY	24.80	-
1	SET BOOT FINISHER CLIP (SN)	NOT NECESSARY	24.20	-
1	BOOT INNER TRIM CLIP (SN)	NOT NECESSARY	45.00	-
1	TAILLAMP CLIP RH (SN)	NOT NECESSARY	5.00	-
1	TAILLAMP CLIP LH (SN)	NOT NECESSARY	5.00	-
2	REAR WINDSCREEN SEALANT (SN)	NOT NECESSARY	80.00	-
1	WINDSCREEN MOULDING (SN)	NOT NECESSARY	100.00	-
1	REAR WINDSCREEN INNER SPONGE SEAL (SN)	NOT NECESSARY	100.00	-
1	FENDER INNER TRIM CLIP RH (SN)	NOT NECESSARY	28.00	-
1	SET FENDER WHEELARCH REAR RH CLIP (SN)	NOT NECESSARY	35.00	-
1	BOOT STICKER "TRANS-CAB" (SN)	NOT NECESSARY	30.00	-
1	BOOT STICKER "6555-3333" (SN)	NOT NECESSARY	30.00	-
1	SET REAR LICENCE PLATE WITH HOLDER (SN)	SERVICEABLE	80.00	-
1	REAR BUMPER PROTECTOR (SN)	NECESSARY	100.00	40.00
1	SET RADIATOR GRILLE FRAME CLIP (SN)	NECESSARY	52.00	52.00
1	SET BUMPER CLIP FRT (SN)	NECESSARY	66.00	66.00
1	BUMPER BRACKET CLIP FRT LH (SN)	NOT NECESSARY	12.00	-
1	BUMPER SUPPORT CLIP FRT LH (SN)	NOT NECESSARY	10.50	-
1	BUMPER BRACKET CLIP FRT RH (SN)	NOT NECESSARY	12.00	-
1	BUMPER SUPPORT CLIP FRT RH (SN)	NOT NECESSARY	10.50	-
1	SET RADIATOR GRILLE SCREW (SN)	NOT NECESSARY	16.00	-
1	SET BUMPER GRILLE LOWER CLIP (SN)	NOT NECESSARY	69.00	-
1	SET FRAME FULL SUPPORT PANEL CLIP (SN)	NOT NECESSARY	70.00	-
2	FRAME FULL SUPPORT PANEL NUT (SN)	NOT NECESSARY	20.00	-

Report Ref No. CC3/LPC20000177/Kda3q2



LKK Auto Consultants Pte Ltd

51 Ubi Ave 1 #01-25 Paya Ubi Industrial Park, Singapore 408933

TEL: 6256 3561 FAX: 6256 4315

Reg. No: 199607198R GST Reg. No. 19-9607198-R

Page No.:6 of 8

Qty	Description of Parts	Condition	Estimate By Workshop (\$)	Our Adjusted (\$)
2	FRAME FULL SUPPORT PANEL STUD (SN)	NOT NECESSARY	30.00	-
1	SET FRONT LICENCE PLATE WITH HOLDER (SN)	BENT	80.00	45.00
1	WHEELARCH CLIP FRT LH (SN)	NOT NECESSARY	30.50	-
1	WHEELARCH CLIP FRT RH (SN)	NOT NECESSARY	30.50	-
6	BONNET INSULATOR CLIP L70Y (SN)	NOT NECESSARY	7.30	-
2	BONNET CABLE COVER SCREW L70Y (SN)	NOT NECESSARY	10.85	-
2	BONNET CABLE CLIP L70Y (SN)	NOT NECESSARY	6.31	-
1	FRONT LH RENAULT TYRE RIM COVER (SN)	NOT NECESSARY	50.00	-
1	FRONT RH RENAULT TYRE RIM COVER (SN)	NOT NECESSARY	50.00	-
1	REAR LH RENAULT TYRE RIM COVER (SN)	NOT NECESSARY	50.00	-
1	FRONT RENAULT TYRE RIM (SN)	SERVICEABLE	385.00	-
1	FRONT RENAULT TYRE 215/60/16 (SN)	SERVICEABLE	330.00	-
1	REAR RENAULT TYRE RIM (SN)	SERVICEABLE	385.00	-
1	REAR RENAULT TYRE 215/60/16 (SN)	SERVICEABLE	330.00	-
			3,763.46	368.00
	LABOUR			
	PUTTY AND SPRAY PAINTING OF THE AFFECTED PORTION.		9,000.00	660.00
	TO RUST-PROOFING OF THE AFFECTED AREAS.		170.00	30.00
	PANEL BEATING,KNOCKING AND STRAIGHTENING THE NECESSARY PORTION,REMOVE AND RENEWAL OF PARTS,ADJUST AND REALIGN THE SAME. }		9,000.00	700.00
	INCLUSIVE OF THE REPAIR OF BUMPER BEAM REAR,BUMPER BEAM BRACKET LH REAR,BUMPER BEAM BRACKET RH REAR,BOOT REAR,BOOT HINGE LH,BOOT HINGE RH,BOOT SWITCH,BOOT LOCK,BOOT LOCK CATCH,TAILLAMP PANEL RH,TAILLAMP PANEL LH,OUTER PANEL REAR (END PANEL),FENDER PANEL REAR RH,EXHAUST REAR,BUMPER BEAM FRT,FRAME FULL SUPPORT BRACKET,FRONT BRACE PANEL,HORN BRACKET,HEADLAMP PANEL FRT LH,HEADLAMP PANEL FRT RH,BONNET HINGE LH,BONNET HINGE RH,BONNET LOCK,FENDER PANEL FRT LH AND FENDER PANEL FRT RH. }		-	-
	TO REINSTALL REAR BUMPER PARKING SENSOR.		170.00	60.00
	TO DROP REAR EXHAUST BOX,RENEW THE SAME,TO REPAIR AND REALIGN CENTRE EXHAUST PIPE.	NOT NECESSARY	170.00	-

Report Ref No. CC3/LPC20000177/Kda3q2



LKK Auto Consultants Pte Ltd

51 Ubi Ave 1 #01-25 Paya Ubi Industrial Park, Singapore 408933

TEL: 6256 3561 FAX: 6256 4315

Reg. No: 199607198R GST Reg. No. 19-9607198-R

Page No.:7 of 8

Qty	Description of Parts	Condition	Estimate By Workshop (\$)	Our Adjusted (\$)
	TO CHECK ELECTRICAL LIGHTING CONCERNED.		170.00	30.00
	TO TRANSFER OF REAR END PANEL FITTINGS,ATTACHMENT AND PERFORM WATER SEEPAGE TEST.	NOT NECESSARY	170.00	-
	TO TRANSFER OF BOOTLID FITTINGS,ATTACHMENTS AND PERFORM WATER SEEPAGE TEST.	NOT NECESSARY	170.00	-
	TO TRANSFER OF REAR WINDSCREEN GLASS TO FACILITATE BODYWORK REPAIR.	NOT NECESSARY	170.00	-
	TO VACUUM,REPLACE,REFIX AND RECHARGE AIR CONDENSER.		380.00	100.00
	LABOUR CHARGE TO MOUNT AND DISMOUNT VEHICLE ON JIG BENCH,TO FACILITATE REPAIR.	NOT NECESSARY	380.00	-
	TO DISMANTLE AND REFIT AIRCON ASSY AND ATTACHMENT,VACUUM ABD CHARGE-IN-GAS.	NOT NECESSARY	380.00	-
	TO REPAIR AND REALIGN REAR EXHAUST PIPE.	NOT NECESSARY	170.00	-
	TO CHECK STEERING GEOMETRY AND COMPUTER WHEEL ALIGNMENT.	NOT NECESSARY	220.00	-
	TO REMOVE AND REFIT INTERIOR FITTINGS,TRIMINGS,GARNISH, FITTINGS AND OTHER,TO ENABLE REPAIR.	NOT NECESSARY	380.00	-
	TO TRANSFER OF FRONT FENDER FITTINGS,ATTACHMENTS AND PERFORM WATER SEEPAGE TEST.	NOT NECESSARY	340.00	-
	TO TRANSFER OF FRONT BUMPER FITTINGS,ATTACHMENT AND PERFORM WATER SEEPAGE TEST.	NOT NECESSARY	170.00	-
	TO TRANSFER OF FRONT BONNET FITTINGS,ATTACHMENT AND PERFORM WATER SEEPAGE TEST.	NOT NECESSARY	170.00	-
	TO TRANSFER OF REAR BUMPER FITTINGS,ATTACHMENT AND PERFORM WATER SEEPAGE TEST.	NOT NECESSARY	170.00	-
	TO TRANSFER OF TIRE,RIM AND ON WHEEL BALANCING.	NOT NECESSARY	170.00	-
	TO TRANSFER OF REAR FENDER FITTINGS,ATTACHMENTS AND PERFORM WATER SEEPAGE TEST.	NOT NECESSARY	170.00	-
	TO REPLACE,REFIX AND TOP UP COOLANT FOR RADIATOR.		170.00	50.00

Report Ref No. CC3/LPC20000177/Kda3q2



LKK Auto Consultants Pte Ltd

51 Ubi Ave 1 #01-25 Paya Ubi Industrial Park, Singapore 408933

TEL: 6256 3561 FAX: 6256 4315

Reg. No: 199607198R GST Reg. No. 19-9607198-R

Page No.:8 of 8

Qty	Description of Parts	Condition	Estimate By Workshop (\$)	Our Adjusted (\$)
	TO VACUUM,REPLACE,REFIX AND RECHARGE AIR INTERCOOLER.	NOT NECESSARY	170.00	-
			22,630.00	1,630.00
GRAND TOTAL			63,291.92	8,754.61
RECOMMENDED COST OF LUMP SUM REPAIRS (TO ITS PRE-ACCIDENT CONDITION)				7,000.00

Report Ref No. CC3/LPC20000177/Kda3q2

KONG SENG CHEONG

Licensed Appraiser

DISCLAIMER OF LIABILITY TO THIRD PARTIES:- This Report is made solely for the use and benefit of the Client named on the front page of this Report.

No liability of responsibility whatsoever, in contract or tort, is accepted to any third party who may rely on the Report wholly or in part. Any third party acting or replying on this Report, in whole or in part, does so at his or her own risk.



LKK Auto Consultants Pte Ltd

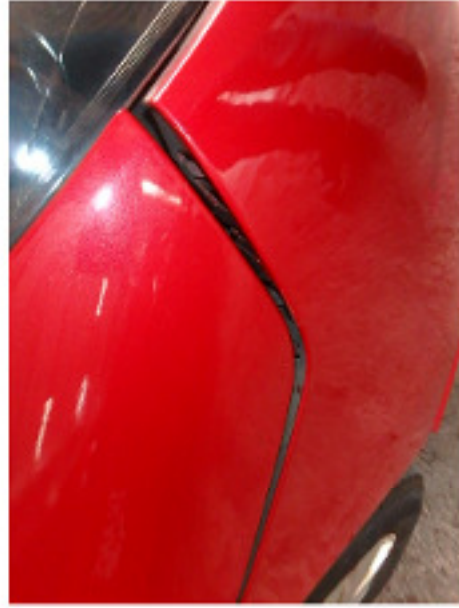
S1 Ubi Ave 1 #01-25 Paya Ubi Industrial Park, Singapore 408933

TEL: 6256 3581 FAX: 6256 4315

Reg. No: 199607198R GST Reg. No. 19-9607198-R

PHOTOGRAPHS FOR VEHICLE NO. SHC 5927H

INSPECTION





LKK Auto Consultants Pte Ltd

51 Ubi Ave 1 #01-25 Paya Ubi Industrial Park, Singapore 408933

TEL: 6256 3581 FAX: 6256 4315

Reg No: 199607198R GST Reg. No. 19-9607198-R





LKK Auto Consultants Pte Ltd

S1 Ubi Ave 1 #01-25 Paya Ubi Industrial Park, Singapore 408933

TEL: 6256 3581 FAX: 6256 4315

Reg. No: 199607198R GST Reg. No. 19-9607198-R





LKK Auto Consultants Pte Ltd

51 Ubi Ave 1 #01-25 Paya Ubi Industrial Park, Singapore 408933

TEL: 6256 3551 FAX: 6256 4315

Reg. No: 199607198R GST Reg. No. 19-9607198-R





LKK Auto Consultants Pte Ltd

51 Ubi Ave 1 #01-25 Paya Ubi Industrial Park, Singapore 408933

TEL: 6256 3551 FAX: 6256 4315

Reg. No: 199607198R GST Reg. No. 19-9607198-R

