



LKK Auto Consultants Pte Ltd

51 Ubi Ave 1 #01-25 Paya Ubi Industrial Park, Singapore 408933

TEL: 6256 3561 FAX: 6256 4315

Reg. No: 199607198R GST Reg. No. 19-9607198-R

TAX INVOICE

CHINA TAIPING INSURANCE (S) PTE LTD

INV No. AC2102028

3 ANSON ROAD #16-00
SPRINGLEAF TOWER
SINGAPORE 079909

INV Date 29/03/2021
Reference CC3/CTI19000191/Kra3q2
Code CTI

PROFESSIONAL SERVICE FEE

Vehicle No. SHB 9998G
Insured Veh. XE 4443T
Claim No. SNM19D200269/C02
Policy No. DMCVSN1839291800
Accident Date 28/12/2018
Inspection Date 31/12/2018

Description	Total
Third Party Express Settlement	400.00
Subtotal	400.00
GST (7%)	28.00
Grand Total	428.00

We shall be glad if you could forward the payment at your early convenience.

Cheque should be crossed and made payable to **'LKK Auto Consultants Pte Ltd'**

LKK Auto Consultants Pte Ltd

LKM



LKK Auto Consultants Pte Ltd

51 Ubi Ave 1 #01-25 Paya Ubi Industrial Park, Singapore 408933

TEL: 6256 3561 FAX: 6256 4315

Reg. No: 199607198R GST Reg. No. 19-9607198-R

Affiliated to Federation Internationale Des Experts En Automobile				
CHINA TAIPING INSURANCE (S) PTE LTD 3 ANSON ROAD #16-00 SPRINGLEAF TOWERS SINGAPORE 079909			Ref: CC3/CTI19000191/Kra3q2	
			Date: 29/03/2021	
			Code: CTI	
1. Policy Particulars :- THIRD PARTY CLAIM				
Insured Veh.	XE 4443T		Veh. Inspected	SHB 9998G
Policy No.	DMCVSN1839291800		Coverage (\$)	0.00
Claim No.	SNM19D200269/C02		Excess (\$)	0.00
Assign From			Assign Date	31/12/2018
2. Vehicle Particulars & Condition				
Make & Model	RENAULT LATITUDE (A)		c.c	1995
Engine No.	HIDDEN		Year of Reg.	2013
Chassis No.	VF1ABL15AUC275221		Colour	METALLIC WHITE /RED
Odometer	609250 KM		Steering	IN ORDER
Brakes	IN ORDER		Modification	NIL
General	GOOD			
3. Conditions of Tyres				
		Size	Make	Balance
R/H Front Tyre		215/60 R16	LING LONG	7 mm
L/H Front Tyre		215/60 R16	LING LONG	7 mm
R/H Rear Tyre		215/60 R16	GITI	6 mm
L/H Rear Tyre		215/60 R16	GITI	6 mm
4. Description of Damages				
THE VEHICLE SUSTAINED DAMAGES AT THE FRONT N/S PORTION. DAMAGES SEE DETAILS.				
5. General Information				
Accident Date	28/12/2018		Inspection Date	31/12/2018
Survey held at	TRANS-CAB AUTO SERVICES PTE LTD NO.2 ANG MO KIO ST 63 SINGAPORE 569111			
5a. Remarks				
A) THE INSPECTION WAS CONDUCTED ON A "WITHOUT PREJUDICE" BASIS. B) IN ACCORDANCE TO YOUR INSTRUCTIONS, WE HAVE NOT AUTHORISED REPAIRS.				
5b. Estimate Days of Repair				
ESTIMATED NORMAL PERIOD FOR REPAIR:			4 Working Days	



LKK Auto Consultants Pte Ltd

51 Ubi Ave 1 #01-25 Paya Ubi Industrial Park, Singapore 408933

TEL: 6256 3561 FAX: 6256 4315

Reg. No: 199607198R GST Reg. No. 19-9607198-R

Page No.:1 of 5

ADJUSTMENT ON REPAIR COST FOR VEHICLE NO. SHB 9998G

Qty	Description of Parts	Condition	Estimate By Workshop (\$)	Our Adjusted (\$)
	<u>REPLACEMENT OF PARTS</u>			
1	BUMPER COVER FRT	BUCKLED	1,259.42	1,259.42
1	BUMPER SPOILER FRT	SERVICEABLE	181.75	-
1	BUMPER ABSORBER FRT	SERVICEABLE	394.68	-
1	BUMPER RETAINER FRT LH	DISTORTED	151.41	151.41
1	BUMPER SUPPORT FRT	SERVICEABLE	123.88	-
1	BUMPER RETAINER FRT RH	SERVICEABLE	150.77	-
1	BUMPER SUPPORT FRT	SERVICEABLE	123.88	-
1	BUMPER UNDERTRAY FRT	SERVICEABLE	472.83	-
1	BUMPER GRILLE LOWER FRT	SERVICEABLE	266.80	-
1	BUMPER FOG LAMP GRILLE LH	SERVICEABLE	207.21	-
1	BUMPER FOG LAMP GRILLE RH	SERVICEABLE	207.21	-
1	BUMPER BEAM FRT	TO REPAIR SEE LABOUR	914.08	-
1	TOW COVER FRT	SERVICEABLE	28.61	-
1	RADIATOR GRILLE	NOT NECESSARY	1,707.78	-
1	RADIATOR GRILLE BADGE 'RENAULT'	NOT NECESSARY	225.36	-
1	RADIATOR GRILLE FRAME	NOT NECESSARY	1,353.75	-
1	FRAME FULL SUPPORT PANEL	NOT NECESSARY	615.90	-
1	FRAME FULL SUPPORT BRACKET	TO REPAIR SEE LABOUR	89.79	-
1	FRONT BRACE PANEL	TO REPAIR SEE LABOUR	177.22	-
1	HORN	SERVICEABLE	314.17	-
1	HORN BRACKET	TO REPAIR SEE LABOUR	40.45	-
1	HEADLAMP LH	BROKEN	1,184.43	1,184.43
1	HEADLAMP HARNESS	SERVICEABLE	928.29	-
1	HEADLAMP PANEL FRT LH	BENT	152.15	152.15
1	BONNET	BENT	1,941.63	1,941.63
1	BONNET INSULATOR	SERVICEABLE	405.73	-
1	BONNET STRUT LH	SERVICEABLE	88.61	-
1	BONNET STRUT RH	SERVICEABLE	88.61	-

Report Ref No. CC3/CTI19000191/Kra3q2



LKK Auto Consultants Pte Ltd

51 Ubi Ave 1 #01-25 Paya Ubi Industrial Park, Singapore 408933

TEL: 6256 3561 FAX: 6256 4315

Reg. No: 199607198R GST Reg. No. 19-9607198-R

Page No.:2 of 5

Qty	Description of Parts	Condition	Estimate By Workshop (\$)	Our Adjusted (\$)
1	BONNET HINGE LH	DISTORTED	348.31	348.31
1	BONNET HINGE RH	TO REPAIR SEE LABOUR	348.31	-
1	BONNET LOCK	TO REPAIR SEE LABOUR	305.48	-
1	BONNET CABLE	SERVICEABLE	119.19	-
1	BONNET CABLE COVER	SERVICEABLE	161.03	-
1	BONNET SEAL OUTER	SERVICEABLE	92.36	-
1	BONNET SEAL INNER	SERVICEABLE	157.28	-
1	FENDER PANEL FRT LH	BENT	783.83	783.83
1	WHEELARCH FRT LH	SERVICEABLE	278.84	-
1	FENDER BRACKET LOWER LH	SERVICEABLE	15.79	-
1	FENDER INSULATOR LH	SERVICEABLE	130.84	-
1	FENDER PANEL INNER FRT LH	TO REPAIR SEE LABOUR	1,693.77	-
1	FENDER PANEL REINFORCEMENT FRT LH	TO REPAIR SEE LABOUR	1,096.22	-
1	WHEEL HOUSING PANEL FRT LH	TO REPAIR SEE LABOUR	5,173.47	-
1	TURBO DUCT	SERVICEABLE	1,027.80	-
1	A/C HEATER VALVE	SERVICEABLE	484.50	-
1	SUBFRAME OUTER FRT	SERVICEABLE	2,652.45	-
1	SUBFRAME BRACKET OUTER LH	SERVICEABLE	92.36	-
1	SUBFRAME BRACKET OUTER RH	SERVICEABLE	92.36	-
1	ENGINE UNDERTRAY	SERVICEABLE	564.98	-
1	A/C CONDENSER	SERVICEABLE	2,020.37	-
1	A/C CONDENSER GARNISH LH UPPER	SERVICEABLE	39.67	-
1	A/C CONDENSER GARNISH RH UPPER	SERVICEABLE	39.67	-
1	A/C CONDENSER GARNISH LH	SERVICEABLE	58.81	-
1	A/C CONDENSER GARNISH RH	SERVICEABLE	59.60	-
1	A/C PIPE CONDENSER TO COMPRESSOR	SERVICEABLE	208.39	-
1	A/C PIPE CONDENSER TO EXPENSION VALVE	SERVICEABLE	658.72	-
1	A/C PIPE COMPRESSOR	SERVICEABLE	334.29	-
1	A/C PIPE	SERVICEABLE	658.72	-
1	A/C COMRPRESSOR	SERVICEABLE	2,684.61	-

Report Ref No. CC3/CTI19000191/Kra3q2



LKK Auto Consultants Pte Ltd

51 Ubi Ave 1 #01-25 Paya Ubi Industrial Park, Singapore 408933

TEL: 6256 3561 FAX: 6256 4315

Reg. No: 199607198R GST Reg. No. 19-9607198-R

Page No.:3 of 5

Qty	Description of Parts	Condition	Estimate By Workshop (\$)	Our Adjusted (\$)
1	AIR COOLER	SERVICEABLE	792.60	-
1	AIR INTERCOOLER HOSE (LONG)	SERVICEABLE	1,014.13	-
1	AIR INTERCOOLER HOSE (SHORT)	SERVICEABLE	375.14	-
1	TRANSMISSION COOLER	SERVICEABLE	1,219.30	-
1	TRANSMISSION COOLER PAD	SERVICEABLE	17.96	-
1	RADIATOR	SERVICEABLE	1,202.20	-
2	RADIATOR STUD UPPER	SERVICEABLE	14.41	-
2	RADIATOR BUSH UPPER	SERVICEABLE	50.12	-
2	RADIATOR MTG LOWER	SERVICEABLE	55.85	-
1	RADIATOR FAN COWLING	SERVICEABLE	820.54	-
1	RADIATOR FAN MOTOR LH	SERVICEABLE	967.36	-
1	RADIATOR FAN MOTOR RH	SERVICEABLE	1,479.46	-
1	RADIATOR TANK	SERVICEABLE	324.62	-
1	RADIATOR HOSE UPPER	SERVICEABLE	240.56	-
1	RADIATOR HOSE LOWER	SERVICEABLE	491.18	-
1	RADIATOR TANK HOSE	SERVICEABLE	61.18	-
	LESS 10% DISCOUNT		-4,530.50	-582.12
			40,774.53	5,239.06
	<u>SPECIAL NETT ITEMS</u>			
1	SET RADIATOR GRILLE FRAME CLIP (SN)	NOT NECESSARY	52.00	-
1	SET BUMPER CLIP FRT (SN)	NECESSARY	66.00	66.00
1	BUMPER BRACKET CLIP FRT LH (SN)	NOT NECESSARY	12.00	-
1	BUMPER SUPPORT CLIP FRT LH (SN)	NOT NECESSARY	10.50	-
1	BUMPER BRACKET CLIP FRT RH (SN)	NOT NECESSARY	12.00	-
1	BUMPER SUPPORT CLIP FRT RH (SN)	NOT NECESSARY	10.50	-
1	TOW COVER FRT (SN)	SERVICEABLE	14.50	-
1	SET RADIATOR GRILLE SCREW (SN)	NOT NECESSARY	16.00	-
1	SET BUMPER GRILLE LOWER CLIP (SN)	NOT NECESSARY	69.00	-
1	SET FRAME FULL SUPPORT PANEL CLIP (SN)	NOT NECESSARY	70.00	-
2	FRAME FULL SUPPORT PANEL NUT (SN)	NOT NECESSARY	20.00	-
2	FRAME FULL SUPPORT PANEL STUD (SN)	NOT NECESSARY	30.00	-

Report Ref No. CC3/CTI19000191/Kra3q2



LKK Auto Consultants Pte Ltd

51 Ubi Ave 1 #01-25 Paya Ubi Industrial Park, Singapore 408933

TEL: 6256 3561 FAX: 6256 4315

Reg. No: 199607198R GST Reg. No. 19-9607198-R

Page No.:4 of 5

Qty	Description of Parts	Condition	Estimate By Workshop (\$)	Our Adjusted (\$)
1	WINDSCREEN MOULDING (SN)	NOT NECESSARY	100.00	-
			482.50	66.00
	LABOUR			
	PANEL BEATING ,KNOCKING AND STRAIGHTENING THE NECESSARY PORTION,REMOVE AND RENEWAL OF PARTS ,ADJUST AND REALIGN THE SAME.INCLUSIVE OF THE REPAIR OF BUMPER BEAM FRT,FRAME FULL SUPPORT BRACKET,FRONT BRACE PANEL,HORN BRACKET,BONNET HINGE RH,BONNET LOCK,FENDER PANEL INNER FRT LH,FENDER PANEL REINFORCEMENT LH AND WHEEL HOUSING PANEL FRT LH.		4,000.00	600.00
	TOWING FEES.		120.00	50.00
	TO APPLY PAINT PROTECTION SYSTEM (PPS) MAINTAIN AND ENHANCEMENT .	NOT NECESSARY	380.00	-
	PUTTY AND SPRAY PAINTING OF THE AFFECTED PORTION .		4,000.00	880.00
	TO RUST-PROOFING OF THE AFFECTED AREAS.		170.00	90.00
	TO REMOVE AND REFIT INTERIOR FITTINGS,TRIMINGS,GARNISH,FITTINGS AND OTHER ,TO ENABLE REPAIR.	NOT NECESSARY	380.00	-
	TO CHECK STEERING GEOMETRY AND COMPUTER WHEEL ALIGNMENT .	NOT NECESSARY	220.00	-
	TO PULL AND JACK OUT CHASSIS FRAME AND CORRECT IT TO SYMMETRICAL POSITION WITH THE AID OF HYDRAULIC PNEUMATIC JACK.	NOT NECESSARY	380.00	-
	LABOUR CHARGE TO MOUNT AND DISMOUNT VEHICLE ON JIG BENCH ,TO FACILITATE REPAIR .	NOT NECESSARY	380.00	-
	TO LIFT -UP ENGINE WITH GEAR BOX AND REFIT.	NOT NECESSARY	440.00	-
	TO REMOVE AND RENEW POWER STEERING PUMP ,OIL COOLER PIPE AND FINAL CHECKING AND TESTING .	NOT NECESSARY	440.00	-
	TO REMOVE AND REFIT AIR BAG SYSTEM AND RESET .	NOT NECESSARY	480.00	-
	TO DROP DIESEL TANK ,PIPES HOSES TO FACILITATE BODYWORK REPAIR ,FINAL CHECKING AND TESTING .	NOT NECESSARY	380.00	-
	TO VACUUM ,REPLACE ,REFIX AND RECHARGE AIR CONDENSER .		380.00	100.00
	TO REPLACE ,REFIX AND TOP UP COOLANT FOR RADIATOR .	NOT NECESSARY	170.00	-
	TO VACUUM ,REPLACE,REFIX AND RECHARGE AIR INTERCOOLER .	NOT NECESSARY	170.00	-

Report Ref No. CC3/CTI19000191/Kra3q2



LKK Auto Consultants Pte Ltd

51 Ubi Ave 1 #01-25 Paya Ubi Industrial Park, Singapore 408933

TEL: 6256 3561 FAX: 6256 4315

Reg. No: 199607198R GST Reg. No. 19-9607198-R

Page No.:5 of 5

Qty	Description of Parts	Condition	Estimate By Workshop (\$)	Our Adjusted (\$)
	TO TRANSFER OF FENDER FITTINGS ,ATTACHMENTS AND PERFORM WATER SEEPAGE TEST.	NOT NECESSARY	170.00	-
	TO TRANSFER OF BONNET FITTINGS ,ATTACHMENTS AND PERFORM WATER SEEPAGE TEST.	NOT NECESSARY	170.00	-
	TO TRANSFER OF DOOR FITTINGS ,ATTACHMENTS AND PERFORM WATER SEEPAGE TEST.	NOT NECESSARY	170.00	-
			13,000.00	1,720.00
GRAND TOTAL			54,257.03	7,025.06
RECOMMENDED COST OF LUMP SUM REPAIRS (TO ITS PRE-ACCIDENT CONDITION)				5,600.00

Report Ref No. CC3/CT19000191/Kra3q2

KONG SENG CHEONG

Licensed Appraiser

DISCLAIMER OF LIABILITY TO THIRD PARTIES:- This Report is made solely for the use and benefit of the Client named on the front page of this Report.

No liability of responsibility whatsoever, in contract or tort, is accepted to any third party who may rely on the Report wholly or in part. Any third party acting or relying on this Report, in whole or in part, does so at his or her own risk.



LKK Auto Consultants Pte Ltd

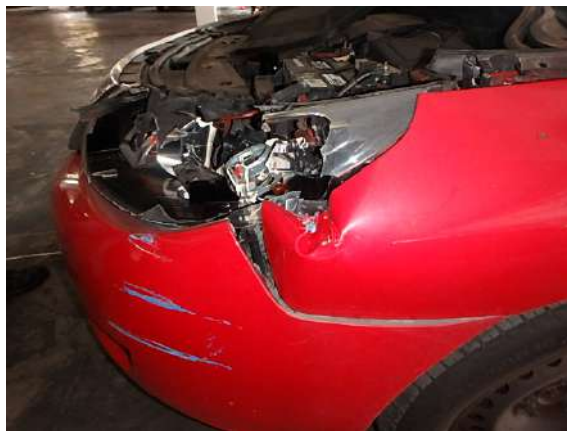
51 Ubi Ave 1 #01-25 Paya Ubi Industrial Park, Singapore 408933

TEL: 6256 3561 FAX: 6256 4315

Reg. No: 199607198R GST Reg. No. 19-9607198-R

PHOTOGRAPHS FOR VEHICLE NO. SHB 9998G

INSPECTION





LKK Auto Consultants Pte Ltd

51 Ubi Ave 1 #01-25 Paya Ubi Industrial Park, Singapore 408933

TEL: 6256 3561 FAX: 6256 4315

Reg. No: 199607198R GST Reg. No. 19-9607198-R





LKK Auto Consultants Pte Ltd

51 Ubi Ave 1 #01-25 Paya Ubi Industrial Park, Singapore 408933

TEL: 6256 3561 FAX: 6256 4315

Reg. No: 199607198R GST Reg. No. 19-9607198-R

