

Picture of the damaged GP Car

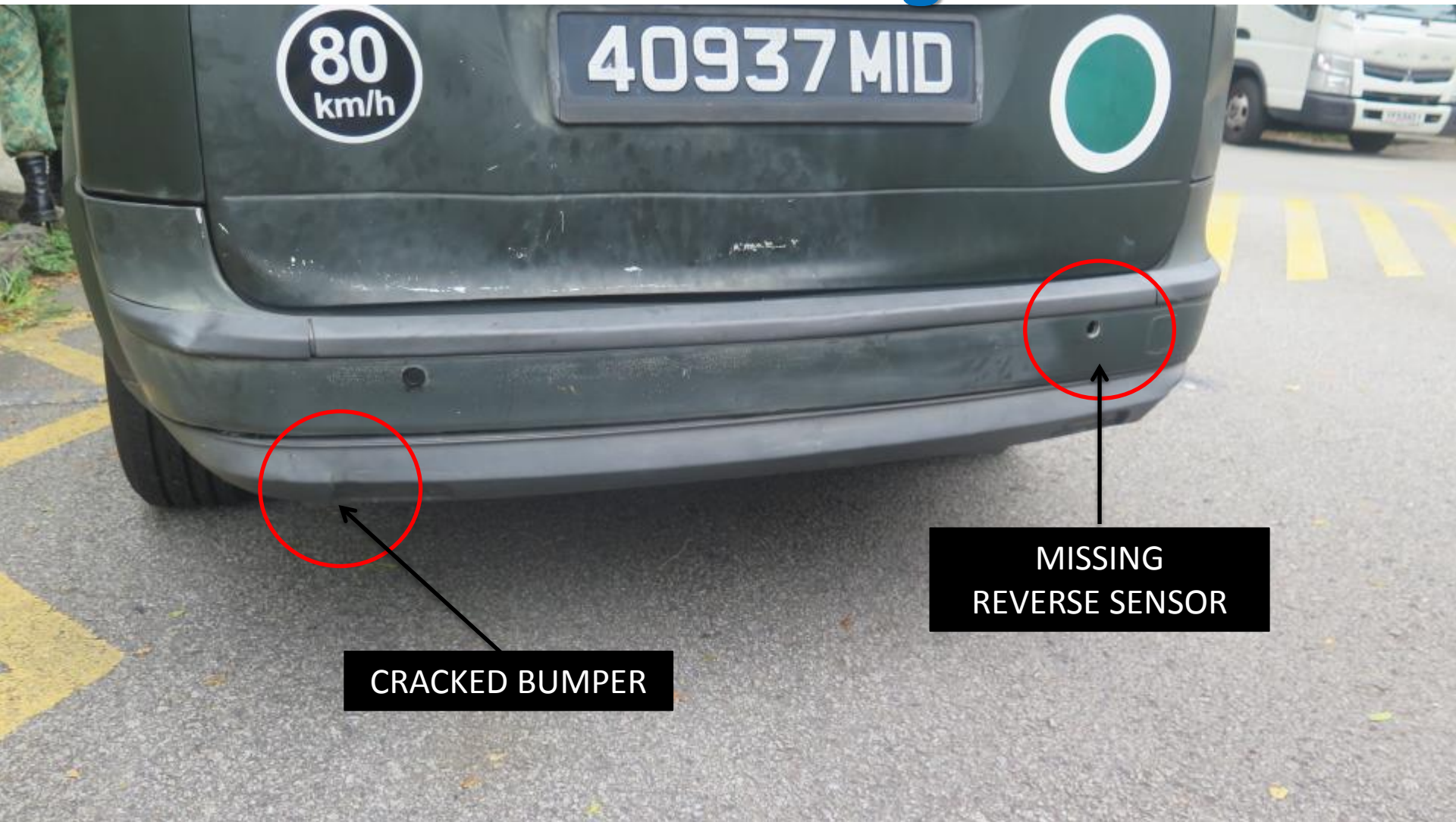


CRACKED BUMPER

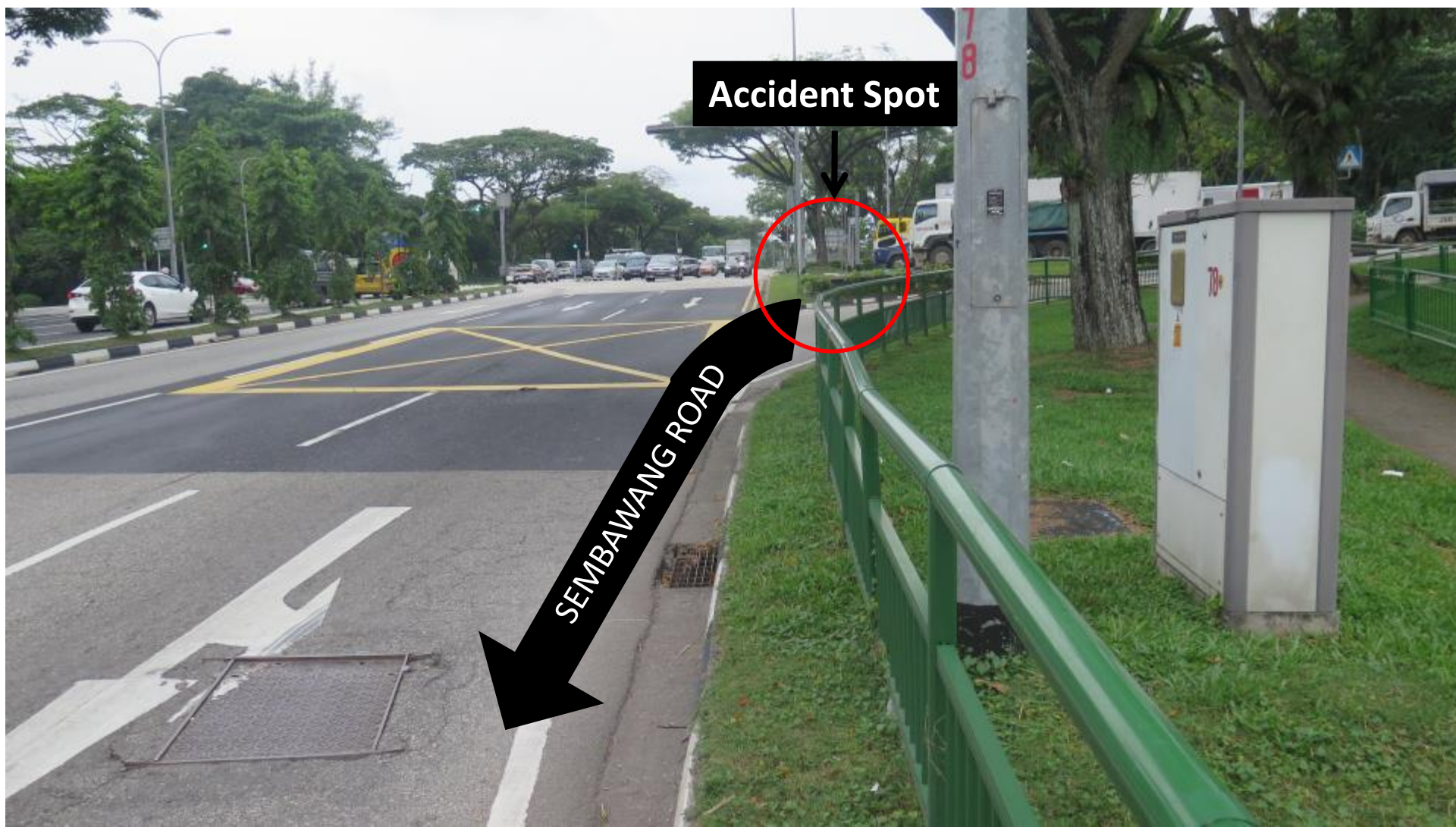
MISSING
REVERSE SENSOR



Picture of the damaged GP Car



Picture of the accident site







MID 40937	
GP Car	
SJE6823H	
Others	

Illustration of accident

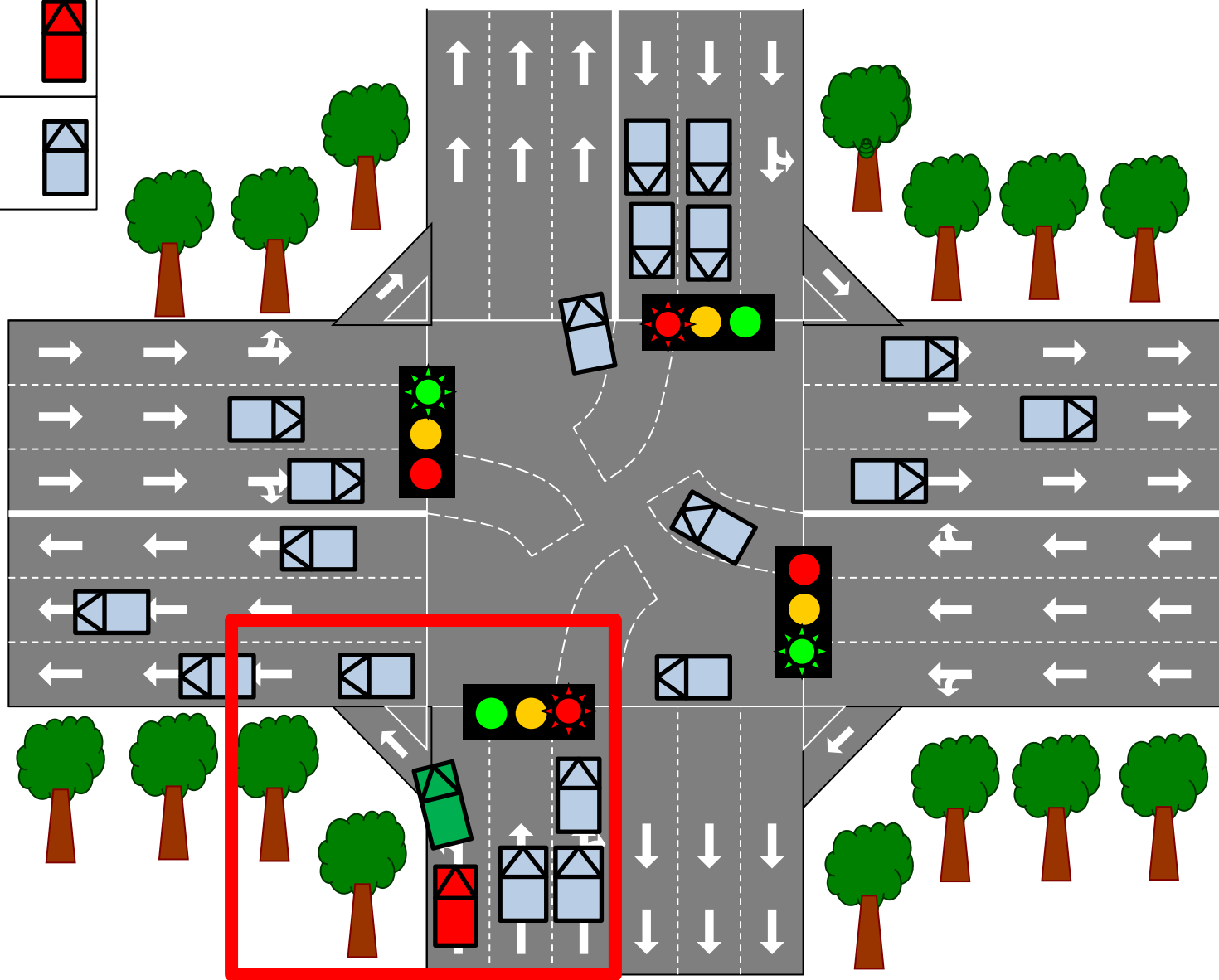


Illustration of accident

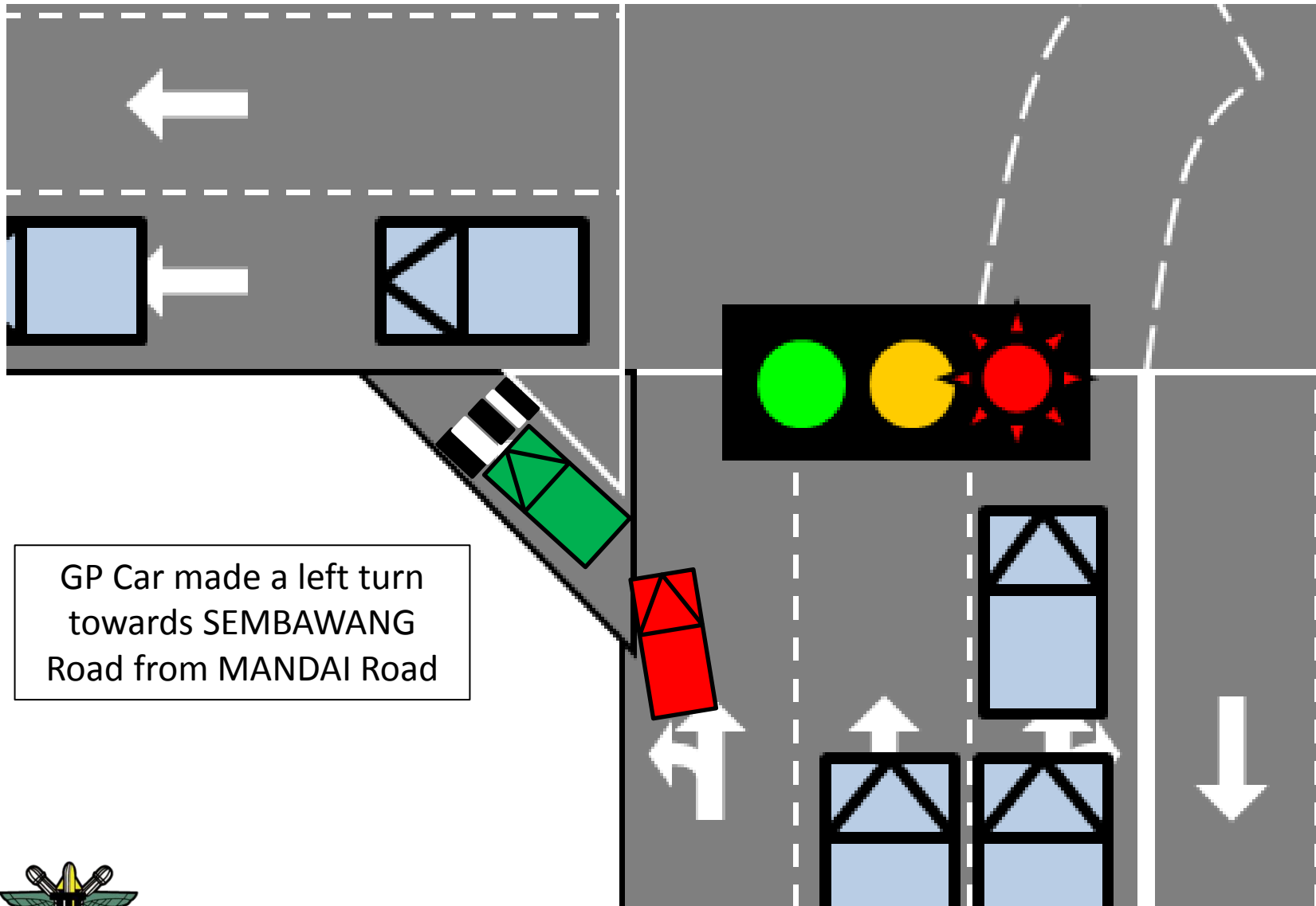
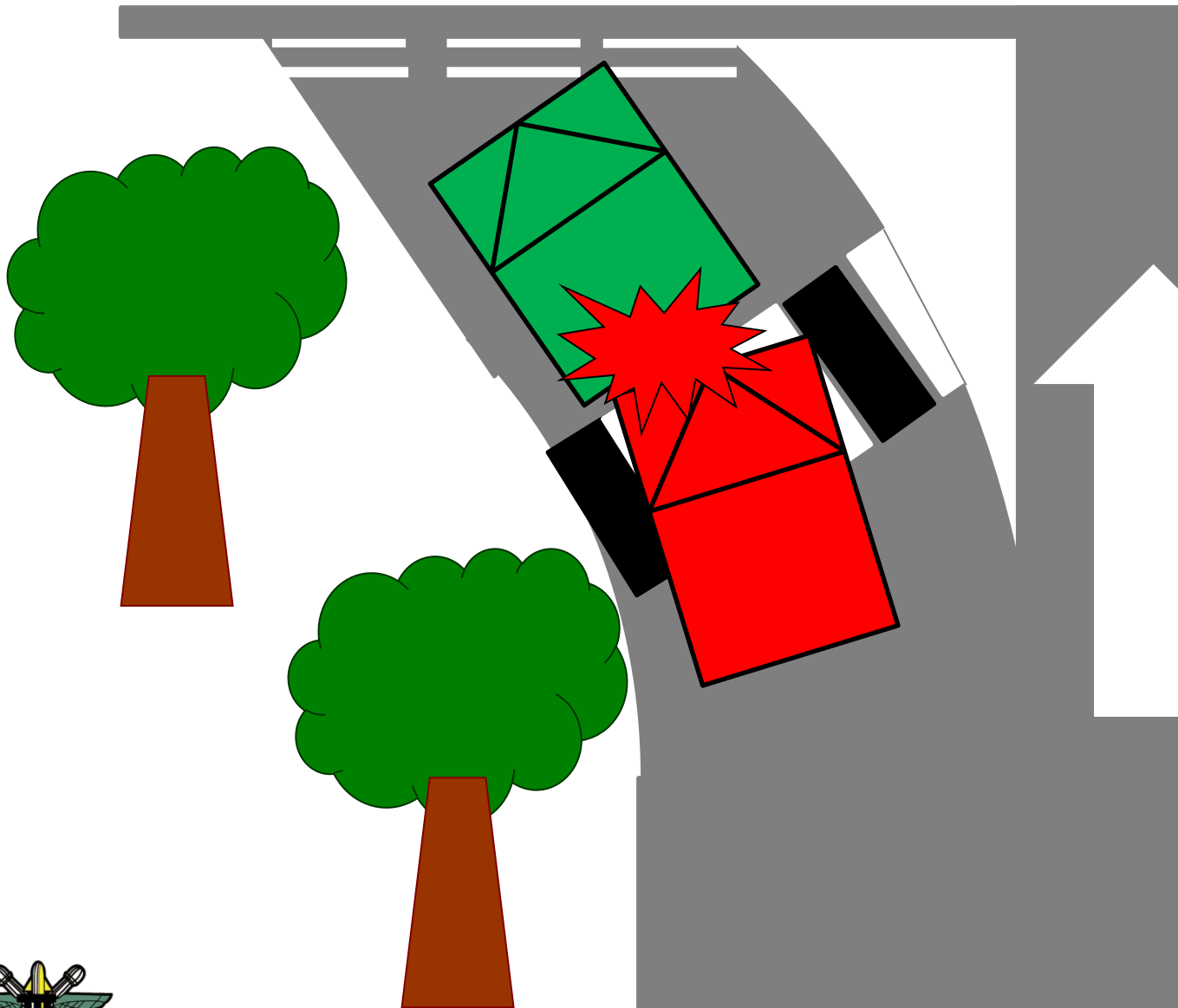


Illustration of accident



When at the slip road, the Transport Operator made a complete stop so as to give way to the main traffic. At this point, the POV rear ended the GP car as the POV did not stop in time.

