

Your Ref: 9285154575SG
Our Ref : CS/AIG24100194/P

8th November 2024

M/S AIG Asia Pacific Insurance Pte Ltd

78 Shenton Way #10-16
Singapore 079120

**MECHANICAL TECHNICAL INSPECTION REPORT OF INSURED VEHICLE
ES 707K**

1. I refer to your request dated 11th October 2024 to comment on the cause of the Insured Vehicle ES 707K (herein referred to as “**Insured Vehicle**”) rolling down the slope and mounted a curb on 8th October 2024 at about 1220hrs along 43 Namly Drive.
2. Briefly, the Insured Vehicle was parked on a down slope right outside house no. 43 Namly drive, along Namly drive road with its handbrake engaged and gearbox set into P gear. However, the Insured Vehicle started to roll down slope 20 minutes after it was parked and mounted and hit a curb before coming to a stop.

Physical Inspection of the Insured Vehicle

3. Following the request, the Insured Vehicle was Physically inspected by me on 25th October 2024 at the premise of Premium Auto Care Centre, 24 Benoi Sector, Singapore 629857. The mileage of the Insured Vehicle at the time of my inspection was 59,381km.
4. Generally, the Insured Vehicle was observed to be in a satisfactory condition with no loose exterior fittings observed.
5. Upon examination of the Insured Vehicle, we observed that the gear shifting cable connector had dislodged of the connection ball that is connected to the gearbox parking pawl.
6. The gear shifting cable connector that was dislodged from the gearbox of the Insured Vehicle is to carry out the driver's input to shift the cable connector which changes engages gear position into P Gear (Parking gear) as well as activating the parking pawl of the gearbox into place to lock the output shaft in the gearbox to prevent the Insured Vehicle rolling forward or backwards. See Photo 1 – 11 below.



Photo 1 shows the mileage of the Insured Vehicle recorded at the time of my inspection was 59,381km.

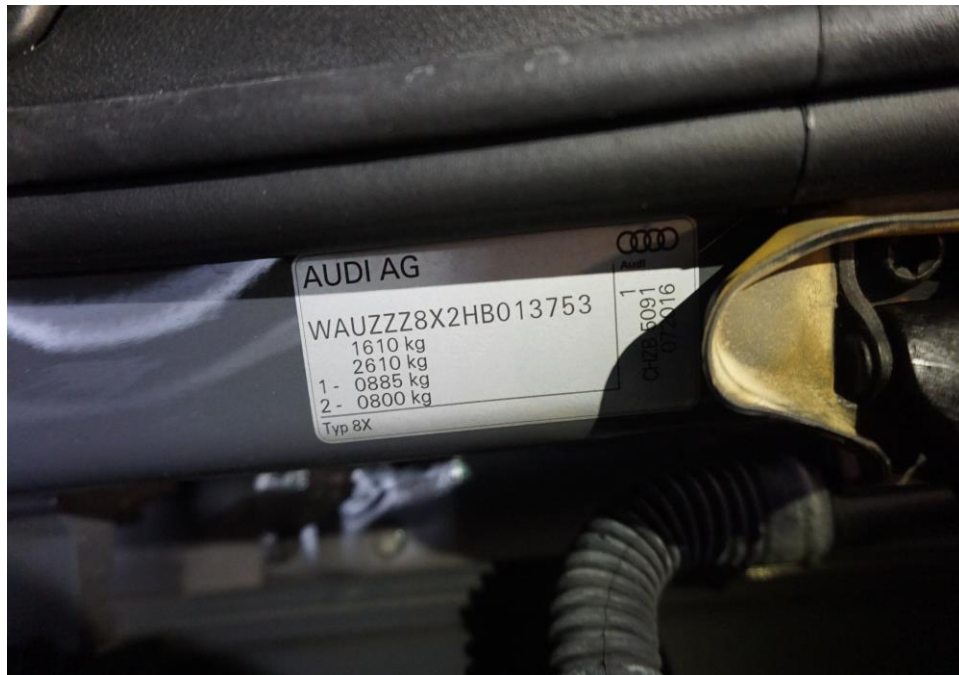


Photo 2 shows the chassis number of the Insured Vehicle recorded at the time of my inspection.

51 UBI AVE 1, #01-25 PAYA UBI INDUSTRIAL PARK, SINGAPORE 408933 TEL : (065) 62563561 FAX : (065) 67414108



Photo 3 shows the front body of the Insured Vehicle. The Insured Vehicle was observed to be in a satisfactory condition with no loose exterior fittings observed.



Photo 4 shows the interior of the Insured Vehicle. The interior of the Insured Vehicle was observed to be in a satisfactory condition with no loose exterior fittings observed.



Photo 5 shows a general view of the engine compartment of the Insured Vehicle at the time of my inspection. The engine compartment was observed to be unaffected by any damages. The gear shifting cable connector that was dislodged from the gearbox of the Insured Vehicle, was fitted at the bottom right side in the engine compartment of the Insured Vehicle. The location of the dislodged gear shifting cable connector is indicated by the red arrow.

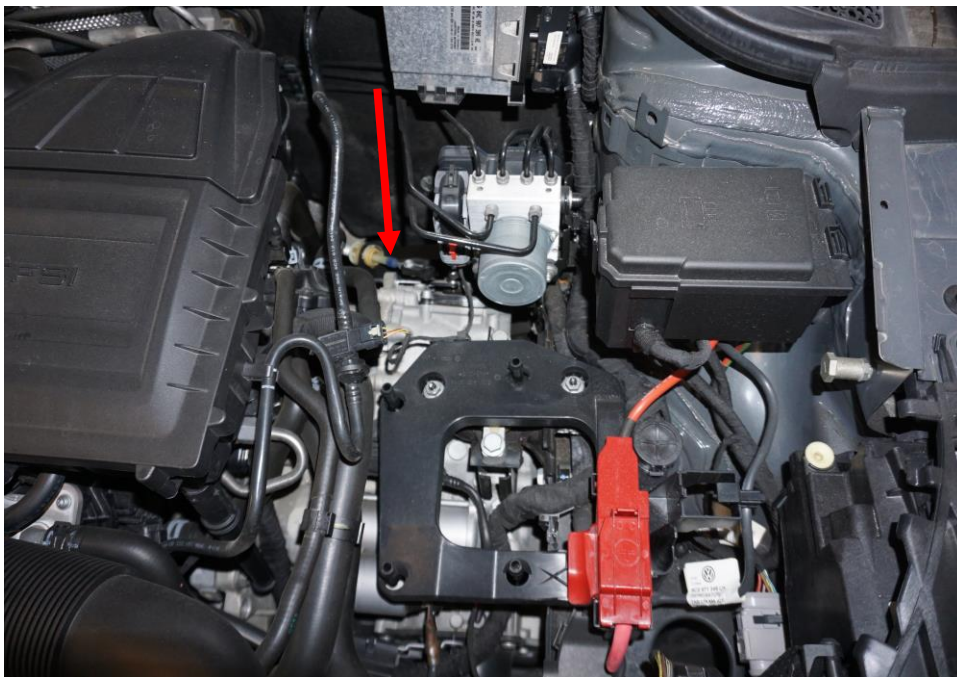


Photo 6 shows a close up view of the engine compartment of the Insured Vehicle at the time of my inspection. The engine compartment was observed to be unaffected by any damages. The gear shifting cable connector that was dislodged from the gearbox of the Insured Vehicle, was fitted at the bottom right side in the engine compartment of the Insured Vehicle. The location of the dislodged gear shifting cable connector is indicated by the red arrow.

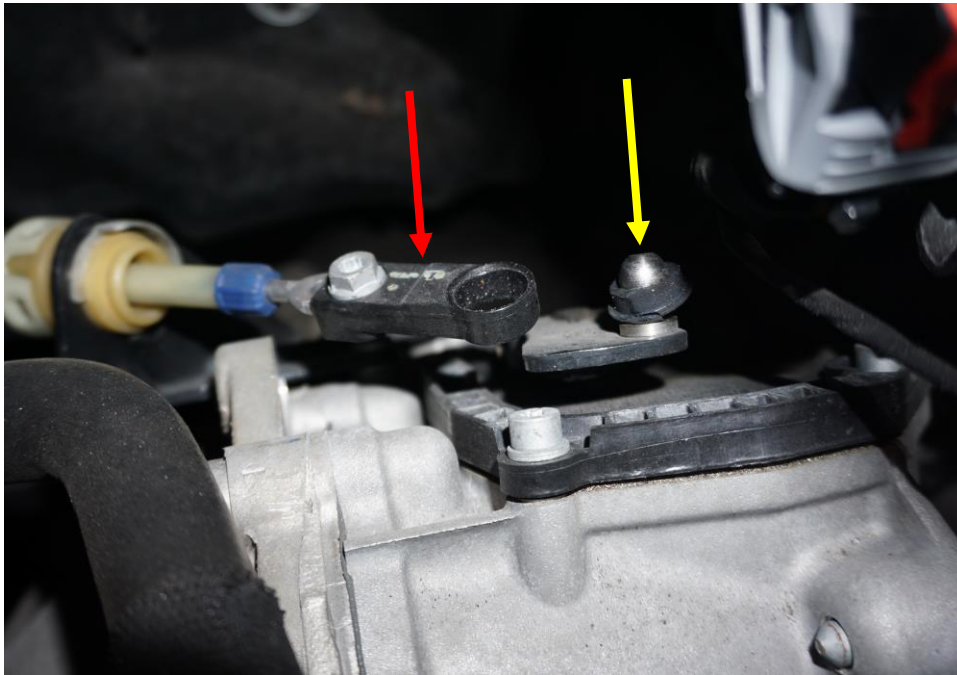


Photo 7 shows a close up view of the engine compartment of the Insured Vehicle at the time of my inspection. The gear shifting cable connector that was dislodged from the gearbox of the Insured Vehicle, was fitted at the bottom right side in the engine compartment of the Insured Vehicle. The location of the dislodged gear shifting cable connector is indicated by the red arrow and the gearbox connecting ball is indicated by the yellow arrow.

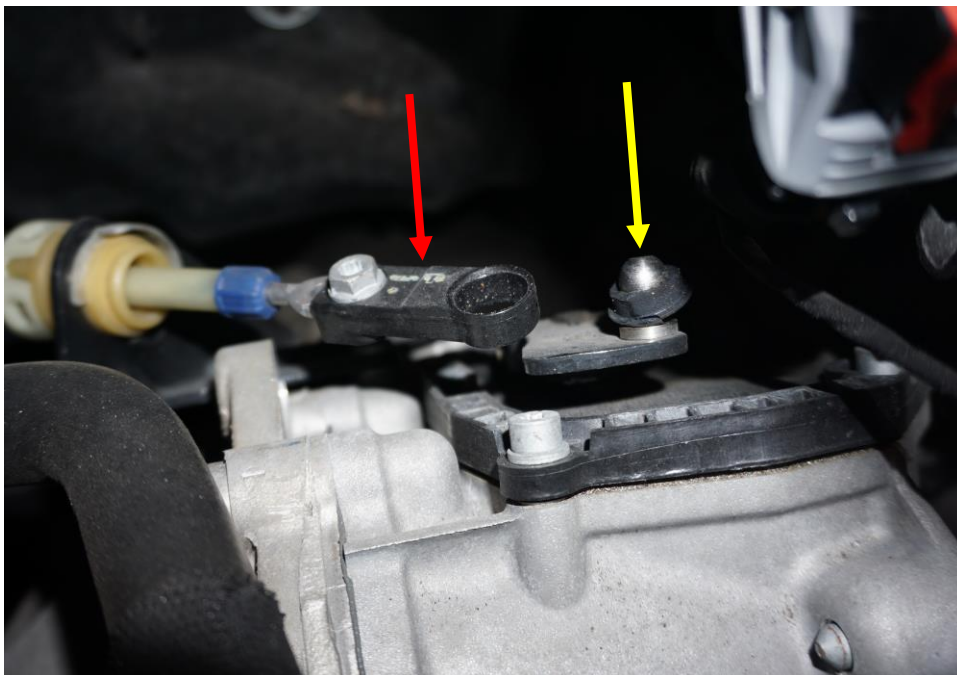


Photo 8 shows a close up view of the engine compartment of the Insured Vehicle at the time of my inspection. The gear shifting cable connector that was dislodged from the gearbox of the Insured Vehicle, was fitted at the bottom right side in the engine compartment of the Insured Vehicle. The location of the dislodged gear shifting cable connector is indicated by the red arrow and the gearbox connecting ball is indicated by the yellow arrow.

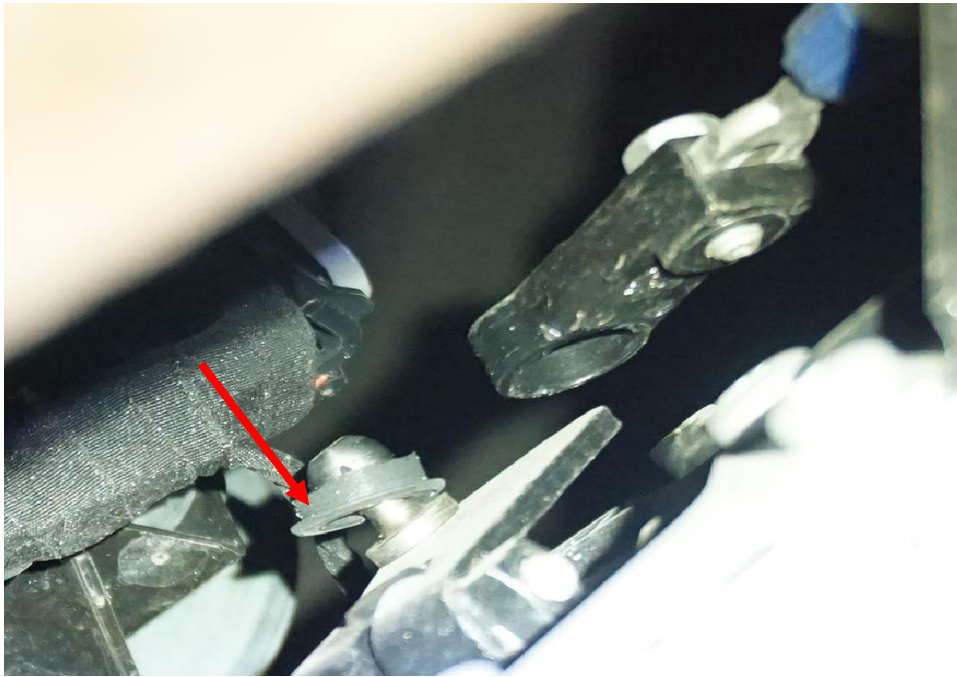


Photo 9 shows a close up view from the underside of the engine compartment of the Insured Vehicle at the time of my inspection. We noticed that there was a broken piece of rubber material on the connecting ball of the gearbox (arrowed). The gear shifting cable connector that was dislodged from the gearbox of the Insured Vehicle, was fitted at the bottom right side in the engine compartment of the Insured Vehicle.

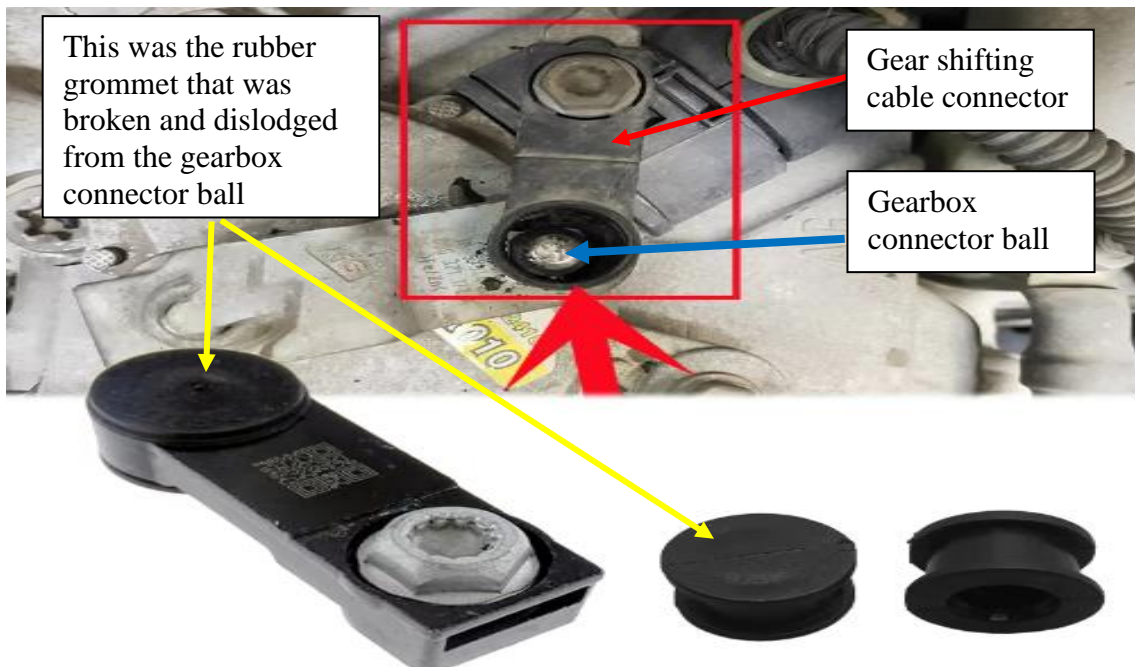


Photo 10 shows an illustration of a gear shifting cable connector (red arrow), the rubber grommet (yellow arrow) and the gearbox connector ball (blue arrow). The rubber grommet connects and secures the gear shifting cable connector to the gearbox connector ball of the gearbox.

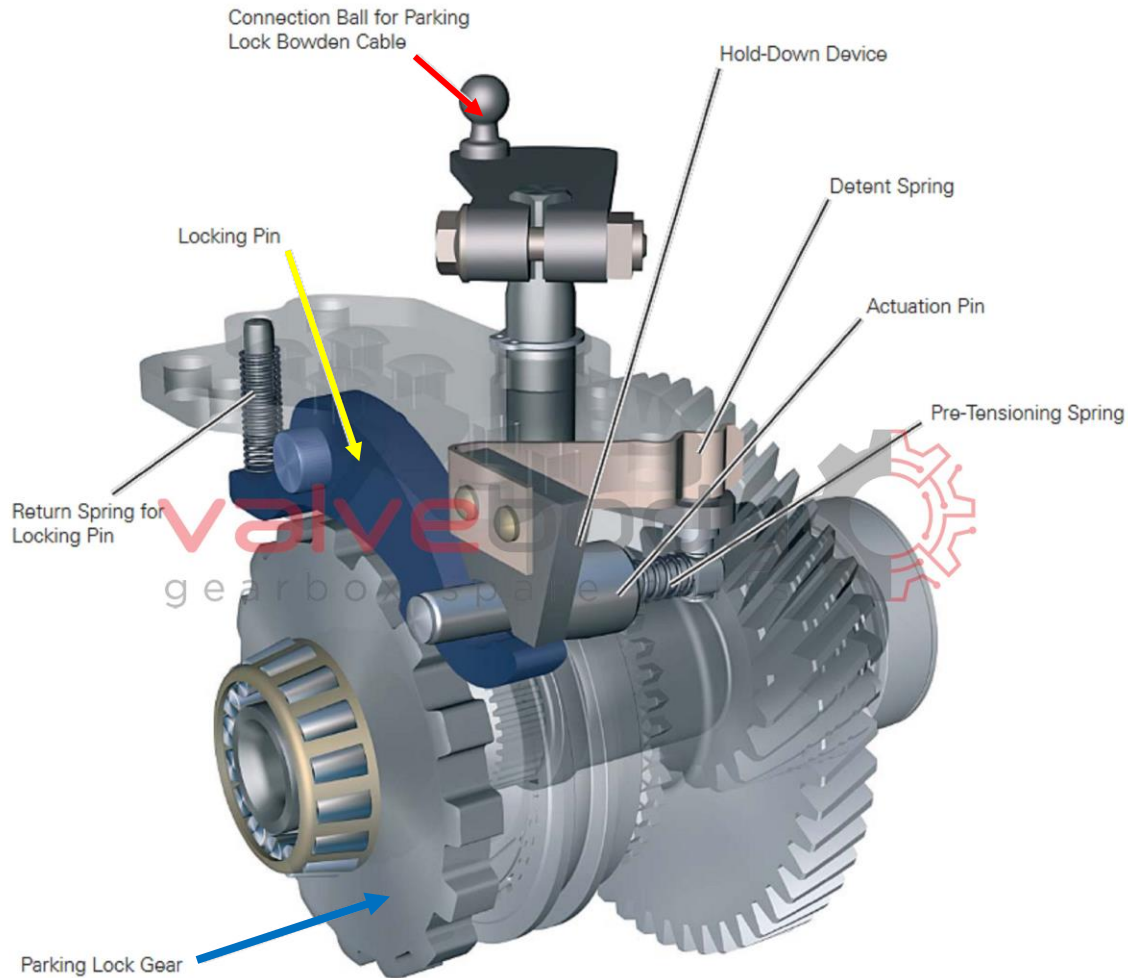


Photo 11 shows an illustration of the gearbox internals of the Insured Vehicle and the connection ball (red arrow) is where the gear shifting cable connector and its rubber grommet is attached onto (red arrow), when the P gear (Parking gear) is engaged, it controls the shifting cable and move the locking pin/parking pawl (yellow arrow) into the grooves of the parking lock gear (blue arrow) to stop the Insured Vehicle from rolling forward or backwards.

Comments & Opinions

Premium Automobiles Pte Ltd



VEHICLE SERVICE HISTORY

Document Provided To: Mdm Tan Soh Ling
 Vehicle Number: ES0707K
 Chassis Number: WAUZZZ8X2HB013753
 Vehicle Model: A1 SB 1.0 TFSI S tronic 8XFCSG
 Registration Date: 28/11/2016

Date	Mileage(km)	Description of Work
13/03/2024	55,581	7TH SVC / PKG 1 Dust and pollen replaced Replaced car battery
13/02/2023	49,293	6TH SVC / PKG 2 Brake fluid service Dust and pollen replaced Air cleaner element replaced Rear brake pads and discs replaced Rotate & balance tyres
17/01/2022	42,234	5TH SVC / PKG 1 Dust and pollen replaced Spark plugs replaced

Prepared on 22/10/2024

Servicing Invoice shows the latest servicing invoice of the Insured Vehicle, and the Insured Vehicle had conducted its periodic servicing and there were no works conducted to the gear shifting cable or the gearbox.

- Under normal circumstance when P gear (Parking gear) is shifted into P gear position by the driver's input, the gear shifting cable connector will move the connection ball of the gearbox and it will then engage the locking pin/parking pawl and locking the parking lock gear in the gearbox, locking it in place preventing the Insured Vehicle from rolling forward or backwards. However, for this particular case, the broken rubber grommet has cause the gear shifting cable connector to dislodged out from the connection ball resulting to the parking lock/parking pawl to not engaged and lock into the parking lock gear of the gearbox of the Insured Vehicle.

Conclusion

8. Based on the observations gathered during my inspection of the Insured Vehicle, which also included the dislodged gear shifting cable connector away from the gearbox's connection ball, it would appear to me that the dislodging of the Insured Vehicle's gear shifting cable connector was due to a material failure of the rubber grommet as a result of natural wear to the material and at the time of inspection.



Sherwin Beh
Technical Investigator



Ang Bryan Tani
AMSOE, AMIRTE, AFF SAE, M.MATAI, AFF.Inst.AEA
Senior Technical Investigator
Technical Investigation & Accident Reconstructionist (SAE-A)

DISCLAIMER OF LIABILITY TO THIRD PARTIES:- This Report is made solely for the use and benefit of the Client named on the front page of this Report. No liability or responsibility whatsoever, in contract or tort, is accepted to any third party who may rely on the Report wholly or in part. Any third party acting or relying on this Report, in whole or in part, does so at his or her own risk.