

## Rajes (LKK Auto)

---

**From:** Bryan Ang (LKKAuto)  
**Sent:** Thursday, August 15, 2024 12:16 PM  
**To:** Chan Mun San (StridesASvcs/ARO/Woodlands WS/Woodlands WS); assignments; SUR  
**Cc:** Wong Kok Wah (StridesASvcs/Ins & Claims/Tx,RAC&PH); Timothy Yap Thian Woon (StridesMSvcs/Ops&Maint/Fleet Mgmt/Fleet Mgmt); Michael Templar (StridesMSvcs/Ops&Maint/Fleet Mgmt/Fleet Mgmt); Damian Chan Wee Siong (StridesMSvcs/Ops&Maint/Fleet Mgmt); Yip Shung Chi, Darren (StridesMSvcs/Ops&Maint/Fleet Mgmt/Fleet Mgmt); Lynn Gan Peh Ling (StridesMSvcs/Ops&Maint/Fleet Mgmt/Fleet Mgmt); Lum Wei Keong (StridesASvcs/ARO/Woodlands WS); Goh Wee Dek (StridesASvcs/Snr Mgmt); Yeo Poh Suan (StridesASvcs/ARO/Woodlands WS); Tay Boon Chew (StridesASvcs/ARO/Woodlands WS/Woodlands WS)  
**Subject:** RE: SHB5448D TAX/07/24/2100 OD CASE  
**Follow Up Flag:** Follow up  
**Flag Status:** Flagged

Hi Assignment Team

Please assign Steve for this case.

Dear Mun San

You can contact Steve directly to arrange.

Best Regards,

**Bryan Ang**

**LKK Auto Consultants Pte Ltd**

phone: 6256-3561 | email: [bryanang@lkkauto.com](mailto:bryanang@lkkauto.com)

Blk 51, Paya Ubi Industrial Park, Ubi Avenue 1, #02-25 | S(408933)

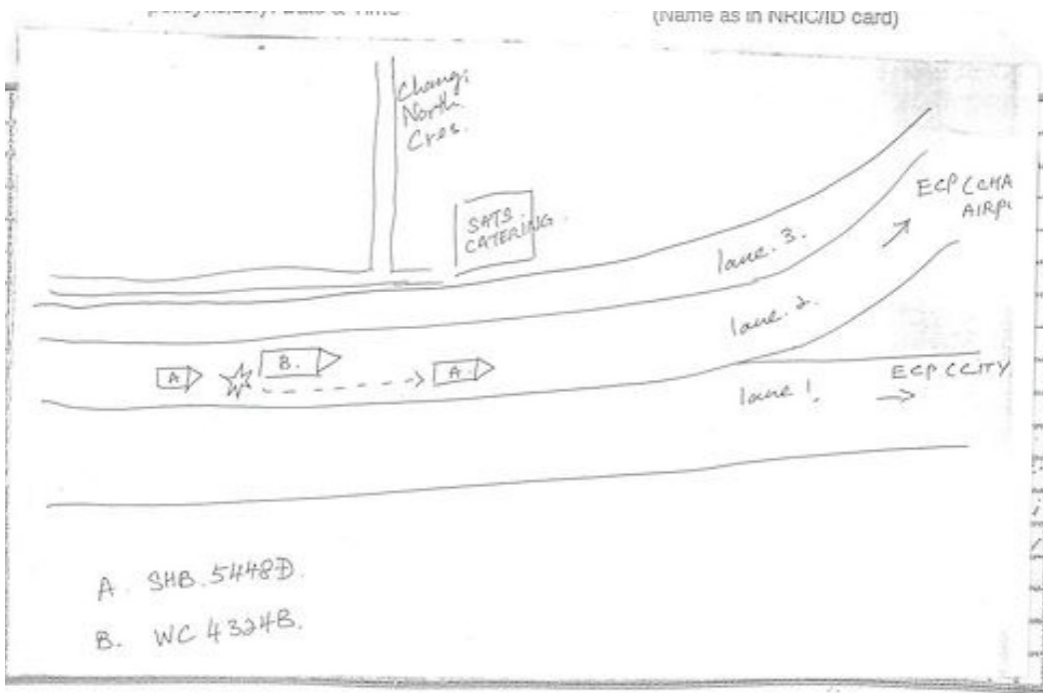
---

**From:** Chan Mun San (StridesASvcs/ARO/Woodlands WS/Woodlands WS) <munsan@stridespremier.com.sg>  
**Sent:** Thursday, August 15, 2024 10:11 AM  
**To:** Bryan Ang (LKKAuto) <bryanang@lkkauto.com>  
**Cc:** Wong Kok Wah (StridesASvcs/Ins & Claims/Tx,RAC&PH) <KokWah.Wong@stridespremier.com.sg>; Timothy Yap Thian Woon (StridesMSvcs/Ops&Maint/Fleet Mgmt/Fleet Mgmt) <Timothy.Yap@stridespremier.com.sg>; Michael Templar (StridesMSvcs/Ops&Maint/Fleet Mgmt/Fleet Mgmt) <Michael.Tem@stridespremier.com.sg>; Damian Chan Wee Siong (StridesMSvcs/Ops&Maint/Fleet Mgmt) <Damian.Chan@stridespremier.com.sg>; Yip Shung Chi, Darren (StridesMSvcs/Ops&Maint/Fleet Mgmt/Fleet Mgmt) <Darren.Yip@stridespremier.com.sg>; Lynn Gan Peh Ling (StridesMSvcs/Ops&Maint/Fleet Mgmt/Fleet Mgmt) <Lynn.Gan@stridespremier.com.sg>; Lum Wei Keong (StridesASvcs/ARO/Woodlands WS) <weikeong@stridespremier.com.sg>; Goh Wee Dek (StridesASvcs/Snr Mgmt) <weedek.goh@stridespremier.com.sg>; Yeo Poh Suan (StridesASvcs/ARO/Woodlands WS) <PohSuan.Yeo@stridespremier.com.sg>; Tay Boon Chew (StridesASvcs/ARO/Woodlands WS/Woodlands WS) <BoonChew.Tay@stridespremier.com.sg>  
**Subject:** Re: SHB5448D TAX/07/24/2100 OD CASE

Hi Bryan

We would like to seek your expert and profession advice for this taxi firewall frame is safe or unsafe to repair. This vehicle currently at WEGA workshop (Sin Ming Autocare). Kindly liase with me so we able to arrange my repairer to accompany during the survey.

Attach photo and screenshot for your perusal.



Best Regards,  
munsan

---

**From:** Chan Mun San (StridesASvcs/ARO/Woodlands WS/Woodlands WS) <[munsan@stridespremier.com.sg](mailto:munsan@stridespremier.com.sg)>  
**Sent:** Wednesday, August 14, 2024 1:27 PM  
**To:** Wong Kok Wah (StridesASvcs/Ins & Claims/Tx,RAC&PH) <[KokWah.Wong@stridespremier.com.sg](mailto:KokWah.Wong@stridespremier.com.sg)>  
**Cc:** Timothy Yap Thian Woon (StridesMSvcs/Ops&Maint/Fleet Mgmt/Fleet Mgmt) <[Timothy.Yap@stridespremier.com.sg](mailto:Timothy.Yap@stridespremier.com.sg)>; Michael Templar (StridesMSvcs/Ops&Maint/Fleet Mgmt/Fleet Mgmt) <[Michael.Tem@stridespremier.com.sg](mailto:Michael.Tem@stridespremier.com.sg)>; Damian Chan Wee Siong (StridesMSvcs/Ops&Maint/Fleet Mgmt) <[Damian.Chan@stridespremier.com.sg](mailto:Damian.Chan@stridespremier.com.sg)>; Yip Shung Chi, Darren (StridesMSvcs/Ops&Maint/Fleet Mgmt/Fleet Mgmt) <[Darren.Yip@stridespremier.com.sg](mailto:Darren.Yip@stridespremier.com.sg)>; Lynn Gan Peh Ling (StridesMSvcs/Ops&Maint/Fleet Mgmt/Fleet Mgmt) <[Lynn.Gan@stridespremier.com.sg](mailto:Lynn.Gan@stridespremier.com.sg)>; Lum Wei Keong (StridesASvcs/ARO/Woodlands WS) <[weikeong@stridespremier.com.sg](mailto:weikeong@stridespremier.com.sg)>; Goh Wee Dek (StridesASvcs/Snr Mgmt) <[weedek.goh@stridespremier.com.sg](mailto:weedek.goh@stridespremier.com.sg)>; Yeo Poh Suan (StridesASvcs/ARO/Woodlands WS) <[PohSuan.Yeo@stridespremier.com.sg](mailto:PohSuan.Yeo@stridespremier.com.sg)>; Tay Boon Chew (StridesASvcs/ARO/Woodlands WS/Woodlands WS) <[BoonChew.Tay@stridespremier.com.sg](mailto:BoonChew.Tay@stridespremier.com.sg)>  
**Subject:** Re: SHB5448D TAX/07/24/2100 OD CASE

Dear Kok Wah

We have permission from FM to engage independent surveyor to conduct a resurvey on **SHB5448D**.

Please kindly assist to request for a resurvey for independent surveyor. This vehicle currently at WEGA workshop so please request the surveyor to coordinate with me regarding the date and time so we able to arrange workshop personnel to accompany during the resurvey.

Best Regards  
munsan

---

**From:** Timothy Yap Thian Woon (StridesMSvcs/Ops&Maint/Fleet Mgmt/Fleet Mgmt) <[Timothy.Yap@stridespremier.com.sg](mailto:Timothy.Yap@stridespremier.com.sg)>  
**Sent:** Wednesday, August 14, 2024 12:47 PM  
**To:** Chan Mun San (StridesASvcs/ARO/Woodlands WS/Woodlands WS) <[munsan@stridespremier.com.sg](mailto:munsan@stridespremier.com.sg)>; Damian Chan Wee Siong (StridesMSvcs/Ops&Maint/Fleet Mgmt) <[Damian.Chan@stridespremier.com.sg](mailto:Damian.Chan@stridespremier.com.sg)>; Michael Templar (StridesMSvcs/Ops&Maint/Fleet Mgmt/Fleet Mgmt) <[Michael.Tem@stridespremier.com.sg](mailto:Michael.Tem@stridespremier.com.sg)>  
**Cc:** Yip Shung Chi, Darren (StridesMSvcs/Ops&Maint/Fleet Mgmt/Fleet Mgmt) <[Darren.Yip@stridespremier.com.sg](mailto:Darren.Yip@stridespremier.com.sg)>; Lynn Gan Peh Ling (StridesMSvcs/Ops&Maint/Fleet Mgmt/Fleet Mgmt) <[Lynn.Gan@stridespremier.com.sg](mailto:Lynn.Gan@stridespremier.com.sg)>; Lum Wei Keong (StridesASvcs/ARO/Woodlands WS) <[weikeong@stridespremier.com.sg](mailto:weikeong@stridespremier.com.sg)>; Goh Wee Dek (StridesASvcs/Snr Mgmt) <[weedek.goh@stridespremier.com.sg](mailto:weedek.goh@stridespremier.com.sg)>; Yeo Poh Suan (StridesASvcs/ARO/Woodlands WS) <[PohSuan.Yeo@stridespremier.com.sg](mailto:PohSuan.Yeo@stridespremier.com.sg)>; Wong Kok Wah (StridesASvcs/Ins & Claims/Tx,RAC&PH) <[KokWah.Wong@stridespremier.com.sg](mailto:KokWah.Wong@stridespremier.com.sg)>; Chong Fei Yuan (Strides Automotive Services Pte Ltd) <[FeiYuan.Chong@stridespremier.com.sg](mailto:FeiYuan.Chong@stridespremier.com.sg)>  
**Subject:** Re: SHB5448D TAX/07/24/2100 OD CASE

Hi Mun San,

Pls proceed.  
Thanks

Regards

Tim

---

**From:** Chan Mun San (StridesASvcs/ARO/Woodlands WS/Woodlands WS) <[munsan@stridespremier.com.sg](mailto:munsan@stridespremier.com.sg)>  
**Sent:** Wednesday, August 14, 2024 12:45:31 PM  
**To:** Damian Chan Wee Siong (StridesMSvcs/Ops&Maint/Fleet Mgmt) <[Damian.Chan@stridespremier.com.sg](mailto:Damian.Chan@stridespremier.com.sg)>; Timothy Yap Thian Woon (StridesMSvcs/Ops&Maint/Fleet Mgmt/Fleet Mgmt) <[Timothy.Yap@stridespremier.com.sg](mailto:Timothy.Yap@stridespremier.com.sg)>; Michael Templar (StridesMSvcs/Ops&Maint/Fleet Mgmt/Fleet Mgmt) <[Michael.Tem@stridespremier.com.sg](mailto:Michael.Tem@stridespremier.com.sg)>  
**Cc:** Yip Shung Chi, Darren (StridesMSvcs/Ops&Maint/Fleet Mgmt/Fleet Mgmt) <[Darren.Yip@stridespremier.com.sg](mailto:Darren.Yip@stridespremier.com.sg)>; Lynn Gan Peh Ling (StridesMSvcs/Ops&Maint/Fleet Mgmt/Fleet Mgmt) <[Lynn.Gan@stridespremier.com.sg](mailto:Lynn.Gan@stridespremier.com.sg)>; Lum Wei Keong (StridesASvcs/ARO/Woodlands WS) <[weikeong@stridespremier.com.sg](mailto:weikeong@stridespremier.com.sg)>; Goh Wee Dek (StridesASvcs/Snr Mgmt) <[weedek.goh@stridespremier.com.sg](mailto:weedek.goh@stridespremier.com.sg)>; Yeo Poh Suan (StridesASvcs/ARO/Woodlands WS) <[PohSuan.Yeo@stridespremier.com.sg](mailto:PohSuan.Yeo@stridespremier.com.sg)>; Wong Kok Wah (StridesASvcs/Ins & Claims/Tx,RAC&PH) <[KokWah.Wong@stridespremier.com.sg](mailto:KokWah.Wong@stridespremier.com.sg)>; Chong Fei Yuan (Strides Automotive Services Pte Ltd) <[FeiYuan.Chong@stridespremier.com.sg](mailto:FeiYuan.Chong@stridespremier.com.sg)>  
**Subject:** SHB5448D TAX/07/24/2100 OD CASE

Hi Damian / Timothy / Micheal

We would like to request permission to engage independent surveyor to resurvey the damage on above mention vehicle. Due to the severity of the firewall , we need to get another option from independent surveyor if the vehicle is safe to repair and comply to LTA regulation. Thanks

Best Regards  
munsan

DISCLAIMER This electronic mail message and any files transmitted with it are intended exclusively for the individual or entity to which it is addressed. The message, together with any attachment, may contain confidential and/or privileged information. Any unauthorized review, use, printing, saving, copying, disclosure or distribution is strictly prohibited. If you, the reader are not the intended recipient, please do not disclose, disseminate, circulate, copy or use any of the information contained in this email. Please notify us immediately and delete the email and destroy any printed copy.

DISCLAIMER This electronic mail message and any files transmitted with it are intended exclusively for the individual or entity to which it is addressed. The message, together with any attachment, may contain confidential and/or privileged information. Any unauthorized review, use, printing, saving, copying, disclosure or distribution is strictly prohibited. If you, the reader are not the intended recipient, please do not disclose, disseminate, circulate, copy or use any of the information contained in this email. Please notify us immediately and delete the email and destroy any printed copy.

DISCLAIMER This electronic mail message and any files transmitted with it are intended exclusively for the individual or entity to which it is addressed. The message, together with any attachment, may contain confidential and/or privileged information. Any unauthorized review, use, printing, saving, copying, disclosure or distribution is strictly prohibited. If you, the reader are not the intended recipient, please do not disclose, disseminate, circulate, copy or use any of the information contained in this email. Please notify us immediately and delete the email and destroy any printed copy.